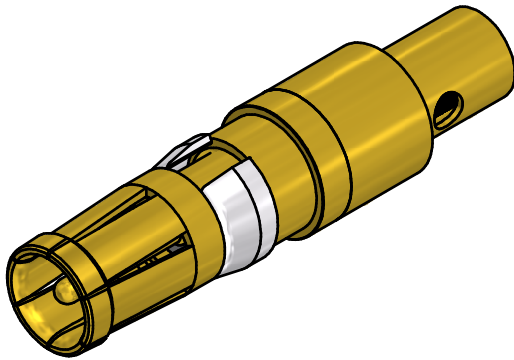
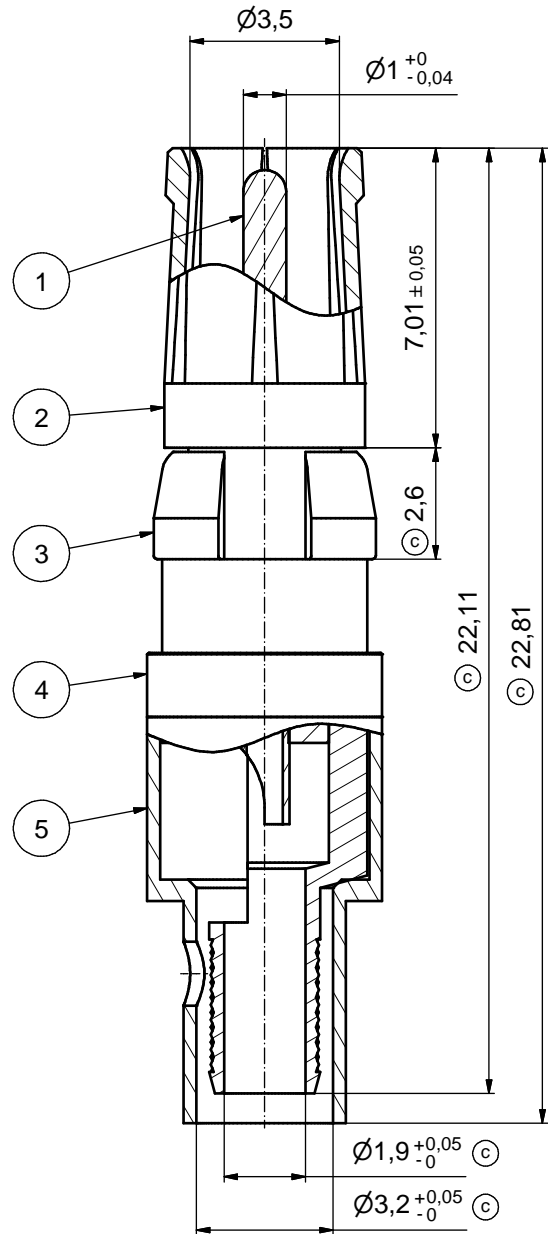
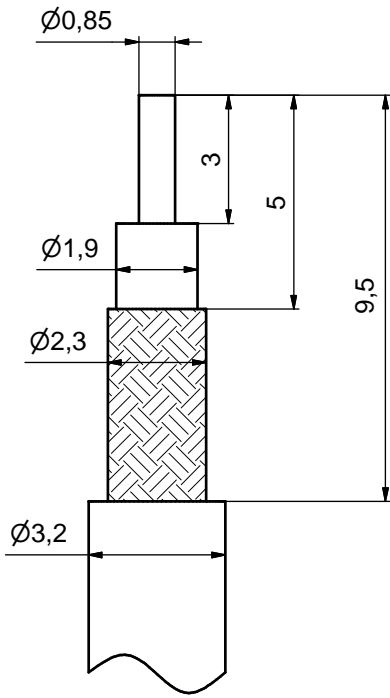


© STRIPPING DIMENSIONS



© ASSEMBLY TOOLING:

1. CENTER CONTACT:
SOLDERED
2. OUTER CONDUCTOR:
SOLDERED OR CRIMPED
USE CRIMP TOOL: 360X10519X
WITH TOOL INSERT: 360X11019X
INSERT CAVITY B: HEX 3.25/128

Part no.	Finish Pos.1	Finish Pos.2	Finish Pos.3	Finish Pos. 4/5
132J20029X	min. 50µin HARD GOLD over min. 50µin NICKEL	min. 30µin HARD GOLD over min. 50µin NICKEL	NICKEL PLATED	GOLD FLASH over NICKEL
132C20029X	min. 30µin HARD GOLD over min. 50µin NICKEL	min. 30µin HARD GOLD over min. 50µin NICKEL	NICKEL PLATED	GOLD FLASH over NICKEL
132A20029X	GOLD FLASH over NICKEL	GOLD FLASH over NICKEL	NICKEL PLATED	GOLD FLASH over NICKEL

Directive 2002/95/EC RoHS compliant

THIS DRAWING MAY NOT BE COPIED OR REPRODUCED IN ANY WAY, AND MAY NOT BE PASSED ON TO A THIRD PARTY WITHOUT WRITTEN PERMISSION. OWNERSHIP AND COPYRIGHT OF CONEC GmbH DO NOT ALTER CAD DRAWING BY HAND	tolerance		dim. in mm		scale: 8:1
					material: COPPER ALLOY (Pos. 1 - 5)
			date		title: (b)
			name		COAXIAL CONTACT SOCKET 50 OHM
			drawn 27.04.00 A. Mickenbecker		inner conductor for solder termination
		appd. 27.04.00 E. Mickenbecker		outer conductor for solder or crimp termination	
		norm		dwg no:	
8 x c	Ä4576	11.12.12	HS	d-old	DIN-A3
1 x b	Ä2535	18.07.06	Lehmen		sh: 1
a	Original				
rev. description		date	name	13K2IAQA part no: see table	