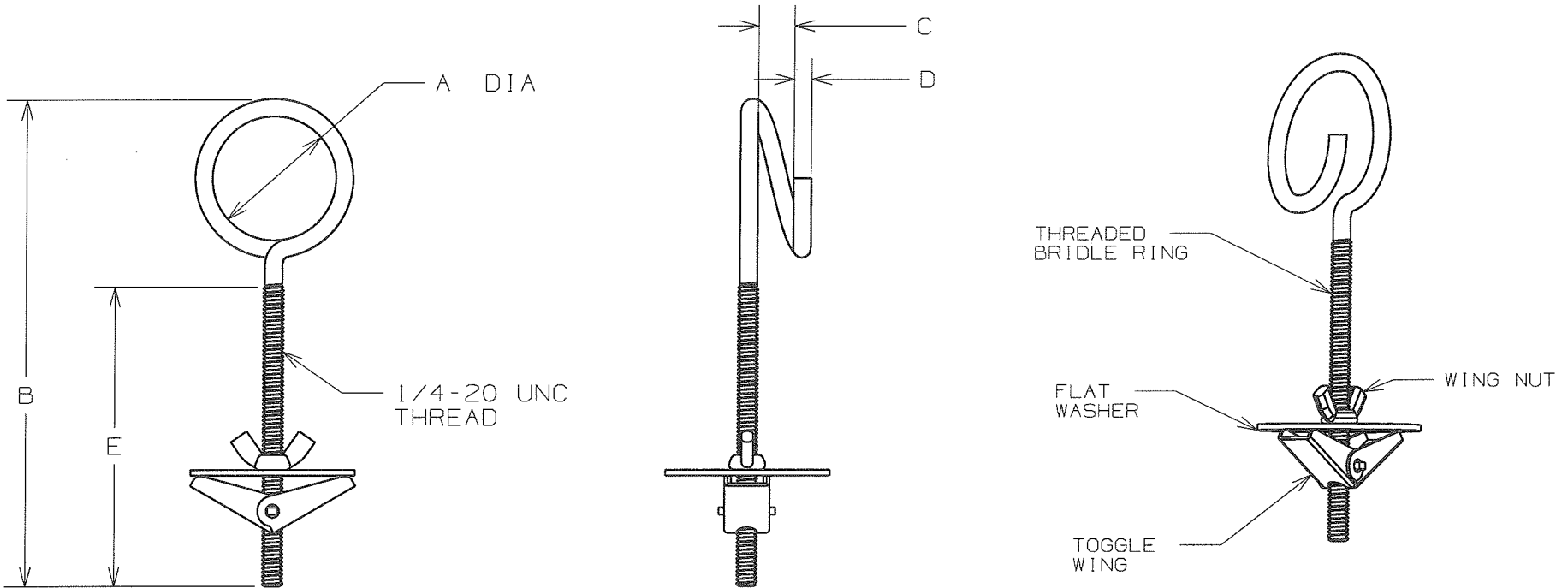


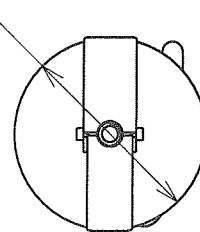
THIS COPY IS PROVIDED ON A RESTRICTED BASIS AND IS NOT TO BE USED IN ANY WAY DETRIMENTAL TO THE INTERESTS OF PANDUIT CORP.

PANDUIT PART NO.	DIMENSIONS						WEIGHT
	A (REF)	B (REF)	C	D	E (REF)	F	lbs / 25pcs (kg) / 25pcs
BR-1.5-TW	1.50 [ 38 ]	5.91 [ 150 ]	0.32 [ 8 ] MINIMUM	0.215 [ 5.45 ] 0.211 [ 5.37 ]	3.64 [ 93 ]	2.02 [ 51.3 ] 1.98 [ 50.3 ]	5.1 (2.3)
BR-2.0-TW	2.00 [ 51 ]	6.42 [ 163 ]	0.32 [ 8 ] MINIMUM	0.215 [ 5.45 ] 0.211 [ 5.37 ]	3.64 [ 93 ]	2.02 [ 51.3 ] 1.98 [ 50.3 ]	5.5 (2.5)



NOTES:

- SEE CURRENT PRICE SHEET FOR PART NUMBER SUFFIX DESIGNATION FOR PACKAGE SIZE.
- RECOMMENDED PASS-THRU HOLE DIAMETER FOR "TOGGLE WING" IS 3/4".



DIMENSIONS IN BRACKETS ARE METRIC [ mm ]	
CAD FILENAME/LAYERS G03668DZ_DC_GB3668DZ/00A	
TINLEY PARK, ILLINOIS	
BR-_-TW BRIDLE RING TOGGLE CLAMP	
UNLESS OTHERWISE SPECIFIED, DIMENSIONAL TOLERANCES ARE: (.X) ±0.05 (1.3) (.XXX) ±0.010 (0.25) (.XX) ±0.02 (0.5) ANGLES ±5°	UNLESS OTHERWISE SPECIFIED, ALL DIMENSIONS ARE GIVEN IN INCHES, THIRD ANGLE PROJECTION.
DRAWN BY ARHA	MAT'L: LOW CARBON STEEL BRIGHT ZINC ELECTROPLATE
DATE 09-15-09	SCALE NONE
CHK'D KLN	DRAWING NO. GB3668DZ
	DWG SIZE A

REV	DATE	BY	CHK	DESCRIPTION	ECN	R	CUST	SUP
OOA	09/15/09	ARHA	OK	INITIAL RELEASE	GB3668DZ	OOA	KLN	