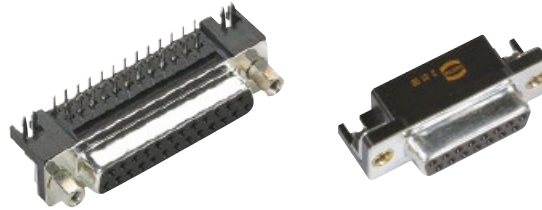
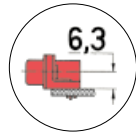


U.S. Footprint

Number of contacts

Mounting height

9–37



Stamped solder pins, angled with snap-in-clips and grounding board locks

Identification	No. of contacts	Part number	
<b>Performance levels</b> Explanations see page 05.04 Other performance levels on request		Performance level 3	S4 <sup>1)</sup>
<b>Male connector</b> metal shell with dimples	9 15 25 37	2.84 mm pitch  09 68 163 781 . 09 68 263 781 . 09 68 363 781 . 09 68 463 781 .	2.84 mm pitch  09 68 163 581 . 09 68 263 581 . 09 68 363 581 . 09 68 463 581 .
<b>Female connector</b> metal shell	9 15 25 37	2.84 mm pitch  09 68 153 761 . 09 68 253 761 . 09 68 353 761 . 09 68 453 761 .	2.84 mm pitch  09 68 153 561 . 09 68 253 561 . 09 68 353 561 . 09 68 453 561 .
Please insert digit for flange thread or fitted female screw locks  M3 ▶ 1 <sup>2)</sup> 4-40 UNC ▶ 2 fitted screw locks 4-40 UNC ▶ 3			

D-Sub

<sup>1)</sup> S4 = 0.76 µm (30 µinch) Au or PdNi equivalent

<sup>2)</sup> Not normally kept in stock