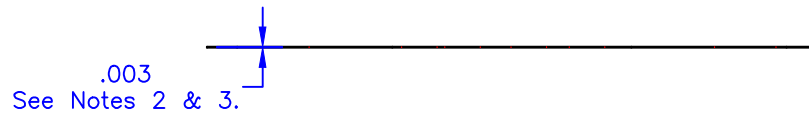
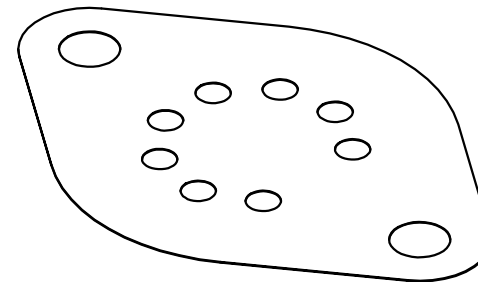
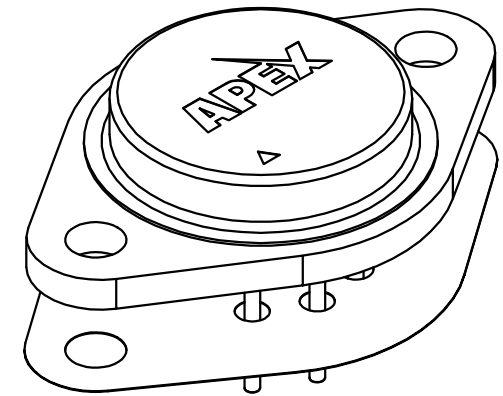
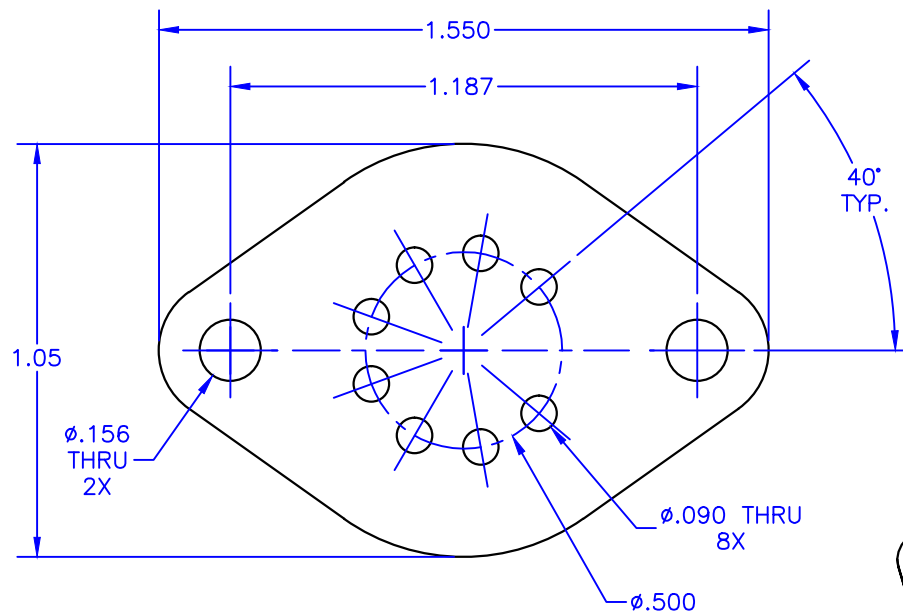


4

3

2

1



NOTES:

1. Unless otherwise noted, all dimensions are in inches.
2. Foil Material: .002 thick 1145 aluminum
3. Interface Material: .0005 thick phase-change thermal compound, both sides.
Maximum shipping & storage temperature - 40°C
Reflow temperature - 60°C
Maximum recommended service temperature - 200°C
4. Thermal impedance: .030 °C/W-in² (.194 °C/W-cm²) @ 20psi
5. Used with TO3 packages (Apex designator: CE).

TOLERANCES - UNLESS OTHERWISE SPECIFIED
.XX = ±.01 [.254]
.XXX = ±.005 [.127]
ANG. = ±5°



TITLE: THERMAL WASHER, T03		MODEL: TW03	
SUBJECT: MECHANICAL DRAWING			
ENGINEER: K.GOPP	DRAWN BY: J.FAY	DCA: 16270	SPL 1 OF 1
FILENAME: TW03	REV: J	DATE: 11JUL16	

4

3

2

1