

4

3

2

1

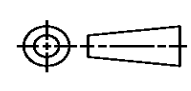
THIS DRAWING IS UNPUBLISHED. RELEASED FOR PUBLICATION
 © COPYRIGHT ALL RIGHTS RESERVED.

LOC	DIST	REVISIONS			
P	LTR	DESCRIPTION	DATE	DWN	APVD
	D1	ECR-14-005483	15MAY2014	GK	HMR

REPLACED BY OCEAN STYLE APPLICATOR PART NUMBER 2266235-1

FOR REPLACEMENT PARTS FOR APPLICATOR 1426160
 REFER TO ADDITIONAL PAGE(S). SPARE PARTS KIT (IF LISTED)
 WILL REMAIN AVAILABLE.

THE REPLACEMENT OCEAN STYLE APPLICATOR HAS THE
 SAME TERMINATOR/PRESS INTERFACE AS APPLICATOR
 1426160

THIS DRAWING IS A CONTROLLED DOCUMENT.		DWN	GOPALAKRISHNA HV		
DIMENSIONS:		CHK	RAGHAVENDRA		
		APVD	RAGHAVENDRA		
TOLERANCES UNLESS OTHERWISE SPECIFIED:		PRODUCT SPEC	NAME		
0 PLC	±	APPLICATION SPEC	SIDE FEED HD-I APPLICATOR		
1 PLC	±		SIZE	CAGE CODE	DRAWING NO
2 PLC	±		A3		©- 1426160
3 PLC	±				RESTRICTED TO
4 PLC	±				
ANGLES	±	WEIGHT			
MATERIAL	FINISH	CUSTOMER DRAWING	SCALE	SHEET 1 OF 2	REV D1



THIS DRAWING IS UNPUBLISHED. RELEASED FOR PUBLICATION
 © COPYRIGHT BY TYCO ELECTRONICS CORPORATION. ALL RIGHTS RESERVED.

LOC		DST		REVISIONS			
P	LTR	DESCRIPTION	DATE	OWN	APVD		
A	66		6-2007	MY	GB		
D		ECR-07-013075					

PART NUMBER	REV	FIRST USED	TERMINATOR	FEED TYPE	DESCRIPTION
1426160-1	D	-	LEADMAKER	MECH POST FEED	CUTS CARRIER
1426160-2	D	-	BENCH	MECH PRE FEED	CUTS CARRIER
1426160-6	D	-	LEADMAKER	MECH POST FEED	CONTINUOUS CARRIER
7-1426160-1	D	-	LEADMAKER	MECH POST FEED	-1 AND SPARE PARTS
7-1426160-2	D	-	BENCH	MECH PRE FEED	-2 AND SPARE PARTS
7-1426160-6	D	-	LEADMAKER	MECH POST FEED	-6 AND SPARE PARTS
7-1426160-7	A	-	-	-	SPARE PARTS KIT

CRIMP DATA (NON-AMP TERMINAL CUSTOMER SPEC.)

TERMINAL NAME: JST PART NO. SVH-21T-P1.1

CRIMP	SIZE	TYPE	RANGE
WIRE	1.78 [.070 IN]	F	0.32mm ² -0.9mm ² (22 AWG-18 AWG)
INSUL	2.60 [.102 IN]	F	1.70-2.60 [.067-.102 IN]

WIRE STRIP LENGTH: 3.10-3.90 [.122-.154 IN] | APPL INSTRUCTION: 408-8322

TERMINAL APPL SPEC: 114-3118 | FEED: 13.00 [.512 IN]

TERMINALS APPLIED

AMP PT NO.	JST PT. NO.			
286927-1	SVH-21T-P1.1	-	-	-
-	-	-	-	-
-	-	-	-	-
-	-	-	-	-
-	-	-	-	-
-	-	-	-	-
-	-	-	-	-
-	-	-	-	-
-	-	-	-	-
-	-	-	-	-

WIRE SIZE mm ² AWG	CRIMP HEIGHT	PIN PN & LENGTH [IN]
0.90mm ²	1.17 ±0.05 [.046 ±0.002 IN]	2-354779-5 [.3115]
18 AWG	1.15 ±0.05 [.045 ±0.002 IN]	2-354779-7 [.3125]
0.75mm ²	1.13 ±0.05 [.044 ±0.002 IN]	3-354779-0 [.3140]
0.50mm ² OR 20AWG	1.10 ±0.05 [.043 ±0.002 IN]	3-354779-1 [.3145]
0.32mm ² OR 22AWG	1.05 ±0.05 [.041 ±0.002 IN]	3-354779-5 [.3165]

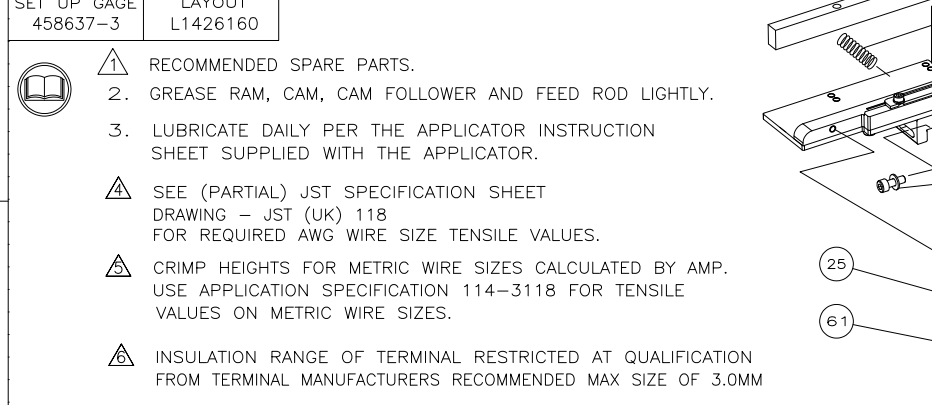
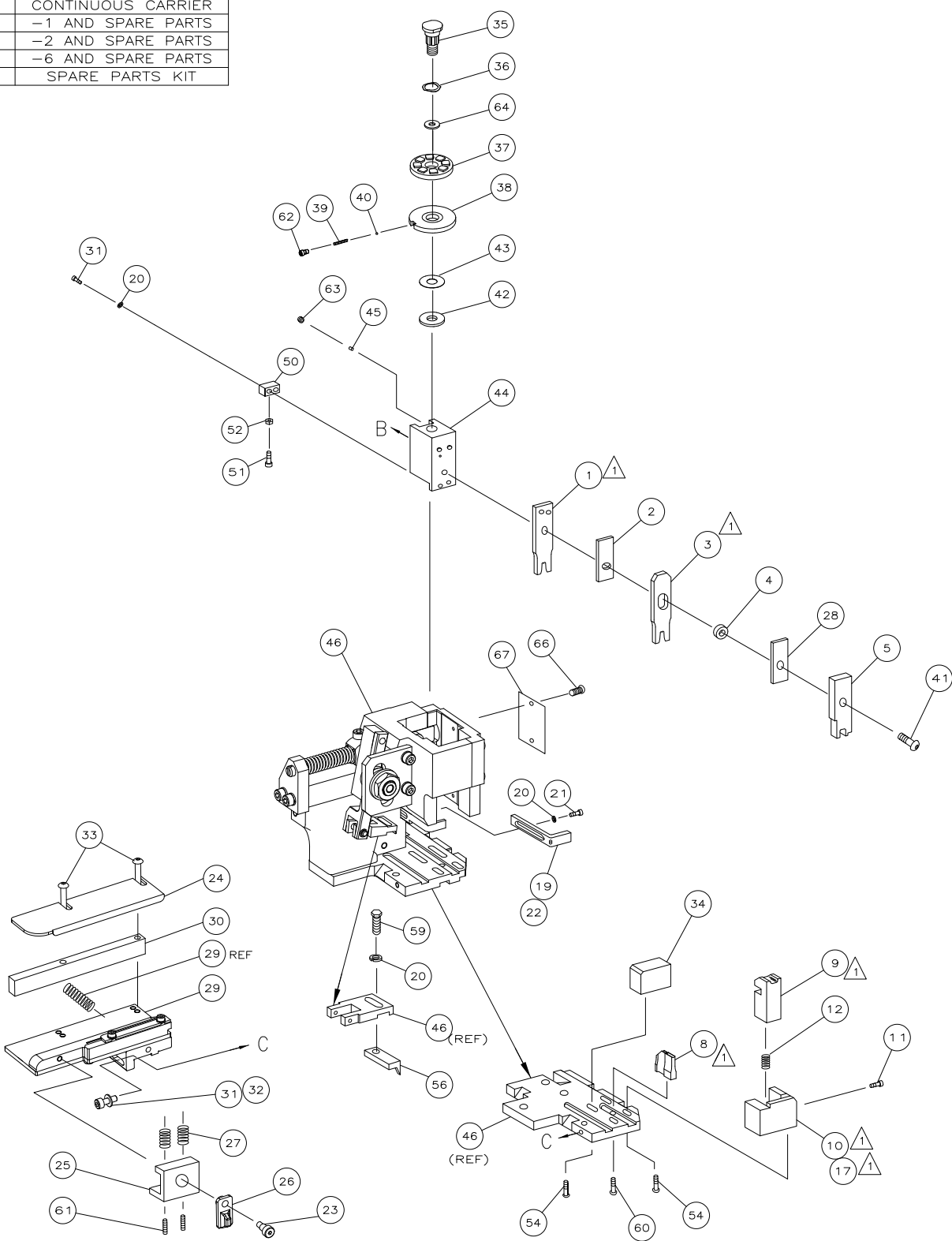
SET UP GAGE: 458637-3 | LAYOUT: L1426160

RECOMMENDED SPARE PARTS:
 2. GREASE RAM, CAM, CAM FOLLOWER AND FEED ROD LIGHTLY.
 3. LUBRICATE DAILY PER THE APPLICATOR INSTRUCTION SHEET SUPPLIED WITH THE APPLICATOR.

SEE (PARTIAL) JST SPECIFICATION SHEET DRAWING - JST (UK) 118 FOR REQUIRED AWG WIRE SIZE TENSILE VALUES.

CRIMP HEIGHTS FOR METRIC WIRE SIZES CALCULATED BY AMP. USE APPLICATION SPECIFICATION 114-3118 FOR TENSILE VALUES ON METRIC WIRE SIZES.

INSULATION RANGE OF TERMINAL RESTRICTED AT QUALIFICATION FROM TERMINAL MANUFACTURERS RECOMMENDED MAX SIZE OF 3.0MM



QTY	REQD	PER ASSY	PART NO	DESCRIPTION	ITEM NO			
-	1	1	1	1	1	1426160	PRINT, APPLICATOR LOG SHEET	73
-	1	1	1	1	1	1338705-1	DOCUMENTATION PACKAGE	71
-	1	1	1	1	1			70
-	1	1	1	1	1	461264-1	PLATE, IDENTIFICATION	67
-	2	2	2	2	2	21017-2	SCR,DRIVE(#2x.19)ID PLATE	66
-	1	1	1	1	1	986950-1	WASHER, FLAT PRECISION	64
-	1	1	1	1	1	3-18031-0	SCR,SKT SET(M6X6)RAM	63
-	1	1	1	1	1	18023-9	SCR,SHC(M4X6)INS DISC	62
-	2	2	2	2	2	2-18032-5	SCR,SET(M5X20)DRAG	61
-	1	1	1	1	1	18024-7	SCR,BHC(M4X10)ANVIL	60
-	1	1	1	1	1	5-18022-2	SCR,HEX(M4X8)FEED FINGER	59
-	1	1	1	1	1			58
-	1	1	1	1	1	1338685-1	PAWL, FEED	57
-	4	4	4	4	4	18024-8	SCR,BHC(M4X12)SHEAR HOLDER	54
-	1	1	1	1	1	18030-1	NUT,HEX(M3)HOLD DOWN	52
-	1	1	1	1	1	811242-5	BUMPER, HOLDDOWN	51
-	1	1	1	1	1	690753-2	SPACER, TONKER	50
-	1	1	1	1	1	18024-3	SCR,BHC(M3X10)CAM	49
-	1	1	1	1	1	1338675-1	CAM, PRE FEED 30 & 40 mm ST	48
-	1	1	1	1	1	1338676-1	CAM, POST FEED 30 & 40 mm ST	47
-	1	1	1	1	1	1320999-3	APPLICATOR BASIC SUBASSY	46
-	1	1	1	1	1	690191-1	PLUG, NYLON	45
-	1	1	1	1	1	1338660-1	RAM	44
-	1	1	1	1	1	690125-1	WASHER, LAMINATED	43
-	1	1	1	1	1	690124-1	WASHER, RAM	42
-	1	1	1	1	1	2-18024-6	SCR,BHC(M8X25)RAM	41
-	1	1	1	1	1	23241-1	BALL, STEEL	40
-	1	1	1	1	1	2-22278-7	SPRING, COMPRESSION	39
-	1	1	1	1	1	1320922-1	DISC, INSULATION	38
-	1	1	1	1	1	354777-1	WIRE DISC, PLASTIC	37
-	1	1	1	1	1	22480-5	WASHER, SPRING	36
-	1	1	1	1	1	690212-1	POST, RAM	35
-	1	1	1	1	1	1320934-1	SUPPORT, TERMINAL	34
-	2	2	2	2	2	1-18024-0	SCR,BHC(M4X20)STRIP GUIDE	33
-	1	1	1	1	1	18027-2	WASHER, FLAT(M4)	32
-	3	3	3	3	3	1-18023-2	SCR,SKT CAP(M4X12)MOUNT BLOCK	31
-	1	1	1	1	1	1320908-6	SPACER, STRIP GUIDE	30
-	1	1	1	1	1	1633073-1	STRIP GUIDE PLATE ASSY	29
-	1	1	1	1	1	455888-4	SPACER, FRONT SHEAR DEP	28
-	2	2	2	2	2	1-22284-0	SPRING, DRAG	27
-	1	1	1	1	1	356835-1	LEVER, DRAG RELEASE	26
-	1	1	1	1	1	240792-1	DRAG, TERMINAL	25
-	1	1	1	1	1	1320928-2	PLATE, STRIP GUIDE	24
-	1	1	1	1	1	980371-4	SCR,SHC SHLD	23
-	1	1	1	1	1	690472-2	STRIPPER	22
-	1	1	1	1	1	1-18023-1	SCR,SHC(M4X10)STRIPPER	21
-	4	4	4	4	4	18025-2	WASHER,LOCK(M4)STRIPPER	20
-	1	1	1	1	1	690472-1	STRIPPER	19
-	1	1	1	1	1	1338684-1	HOLDER, SHEAR, FRONT (NO-CUT)	17
-	1	1	1	1	1			16
-	1	1	1	1	1			15
-	1	1	1	1	1			14
-	1	1	1	1	1	3-22280-3	SPRING, SHEAR	13
-	1	1	1	1	1	356885-4	STOP, SHEAR	12
-	1	1	1	1	1	1320921-1	HOLDER, SHEAR, FRONT (CUT)	10
-	1	1	1	1	1	462006-1	SHEAR, FLOAT (FRONT)	9
-	1	2	2	2	2	1333203-4	ANVIL	8
-	1	1	1	1	1			7
-	1	1	1	1	1			6
-	1	1	1	1	1	2-455889-0	DEPRESSOR, SHEAR (FRONT)	5
-	1	1	1	1	1	238011-6	SPACER, BLOCK CRIMPER	4
-	1	2	2	2	2	2-1213077-3	CRIMPER, INSULATION	3
-	1	1	1	1	1	455888-3	SPACER, CRIMPER	2
-	1	2	2	2	2	3-456404-6	CRIMPER, WIRE	1
-	77	-76	-72	-71	-6	-2	-1	

THIS DRAWING IS A CONTROLLED DOCUMENT.

APVD: F. BACKHURST | NAME: Tyco Electronics Corporation | ADDRESS: Harrisburg, PA 17105-3608

PRODUCT SPEC: SIDE FEED HD-I APPLICATOR

APPLICATION SPEC: -

SIZE: A1 | CAGE CODE: 00779 | DRAWING NO: 1426160

CUSTOMER DRAWING | SCALE: - | SHEET: 1 OF 1 | REV: D