

| ATLANTIC VERSION TERMINATOR INTERFACE ADAPTER | PART NUMBER | REVISION                 | DESCRIPTION                    | FEED TYPE                      | APPLICATOR STYLE CONVERSION CHART |                       |           |             |           |           |                        |
|---|-------------|--------------------------|--------------------------------|--------------------------------|-----------------------------------|-----------------------|-----------|-------------|-----------|-----------|------------------------|
|   |             |                          |                                |                                | CONVERT TO                        | PART NUMBERS REQUIRED |           |             |           |           |                        |
|   | 2266696-1   | B                        | FINE CRIMP HEIGHT ADJUST       | MECHANICAL                     | PNEUMATIC FEED                    | 2119950-1             | 1338685-1 | 5-18022-5   | 2119641-1 | 2119799-1 | 2063440-1              |
|   |             |                          |                                |                                | SERVO LATCH PLATE                 | 2119951-1             | -         | 8-2266696-5 | 1901094-3 | -         | 2168400-6 (QUANTITY 2) |
|   |             |                          |                                |                                | SMART APPLICATOR                  | 2161326-1             | -         | 8-2266696-4 | -         | -         | -                      |
|   | 2266696-2   | B                        | FINE CRIMP HEIGHT ADJUST       | PNEUMATIC                      | MECHANICAL FEED                   | 2119949-1             | 1338685-1 | 5-18022-5   | 2119653-1 | -         | -                      |
|   |             |                          |                                |                                | SERVO LATCH PLATE                 | 2119951-1             | -         | 8-2266696-5 | 1901094-3 | -         | 2168400-6 (QUANTITY 2) |
|   |             |                          |                                |                                | SMART APPLICATOR                  | 2161326-1             | -         | 8-2266696-4 | -         | -         | -                      |
|   | 2266696-5   | B                        | FINE CRIMP HEIGHT ADJUST       | SERVO LATCH PLATE <sup>4</sup> | MECHANICAL FEED                   | 2119949-1             | 1338685-1 | 5-18022-5   | 2119653-1 | -         | -                      |
| PNEUMATIC FEED                                |             |                          |                                |                                | 2119950-1                         | 1338685-1             | 5-18022-5 | 2119641-1   | 2119799-1 | 2063440-1 |                        |
| 2266696-6                                     | B           | NON-CRIMP HEIGHT ADJUST  | SERVO LATCH PLATE <sup>4</sup> | NONE                           | -                                 | -                     | -         | -           | -         | -         |                        |
| 2266696-7                                     | B           | FINE CRIMP HEIGHT ADJUST | NONE                           | -                              | -                                 | -                     | -         | -           | -         | -         |                        |
| 7-2266696-7                                   | B           | CRIMP TOOLING KIT        | -                              | -                              | -                                 | -                     | -         | -           | -         | -         |                        |

| APPLICATOR DATA |                |      |
|-----------------|----------------|------|
| CRIMP           | SIZE           | TYPE |
| WIRE            | 1.35 mm [.053] | F    |
| INSUL           | 1.80 mm [.071] | O    |

APPLICATOR INSTRUCTIONS  
408-10389

| TERMINAL DATA: JST TERMINAL        |                  | JST CRIMP SPECIFICATION      |                 |
|------------------------------------|------------------|------------------------------|-----------------|
| TERMINAL NAME: MSA MALE TERMINAL   |                  |                              |                 |
| WIRE STRIP LENGTH                  |                  | INSULATION DIAMETER RANGE    |                 |
| 3.82-4.58 mm [.150-.180 IN]        |                  | Ø1.40-1.90 mm [.055-.075 IN] |                 |
| TERMINAL APPLICATION SPECIFICATION | CHM-2-3975 Rev 2 |                              |                 |
| TERMINALS APPLIED                  |                  |                              |                 |
| TE TERMINAL                        | JST TERMINAL     | TE TERMINAL                  | JST TERMINAL    |
| 2113562-1                          | SMSAW-A031T-M1.2 | 2113615-1                    | SMSA-A031T-M1.2 |

| WIRE SIZE | CRIMP HEIGHT mm [INCH]        | CRIMP HEIGHT REFERENCE SETTING |
|-----------|-------------------------------|--------------------------------|
| 0.75mm2   | 1.02 +/- 0.03 [.040 +/- .001] | 7.7                            |
| 0.50mm2   | 0.93 +/- 0.03 [.037 +/- .001] | 8.6                            |

- RECOMMENDED SPARE PARTS
- GREASE BEARING SURFACES LIGHTLY
- 3. LUBRICATE DAILY PER THE APPLICATOR INSTRUCTION SHEET SUPPLIED WITH THE APPLICATOR.
- APPLICATOR SPECIFIC DATA TO BE ENTERED INTO BLANK MEMORY CHIP AT ASSEMBLY. SEE BELOW FOR PART NUMBER:  
 MECHANICAL FEED WITH "SMART APPLICATOR" CONVERSION: 8-2266696-4  
 PNEUMATIC FEED WITH "SMART APPLICATOR" CONVERSION: 8-2266696-4  
 SERVO FEED WITH "FINE CRIMP HEIGHT ADJUST": 8-2266696-5  
 SERVO FEED WITH "NON-CRIMP HEIGHT ADJUST": 8-2266696-6
- 5. ADJUSTMENT OF THE STRIPPER MAY BE REQUIRED WHEN MOVING THE APPLICATOR BETWEEN BENCH AND LEADMAKER APPLICATIONS.
- APPLY PART NUMBER 1-23419-5 LOCTITE TO THREADS OF ITEM 62. APPLY PART NUMBER 2-23419-6 LOCTITE TO THREADS OF ITEM 242. FOR -6 ONLY APPLY PART NUMBER 1-23419-5 LOCTITE TO THREADS OF ITEM 37.
- GREASE THREADS, GROOVE AND O-RING ON ITEMS 35 & 252.
- MAGNET, ITEM 166 MUST BE ORIENTED CORRECTLY IN ORDER TO PROPERLY ACTUATE THE COUNTER.
- CRIMP HEIGHT REFERENCE SETTING WAS THE SETTING USED WHEN THE APPLICATOR WAS QUALIFIED AT THE FACTORY. ADJUSTMENT MAY BE NECESSARY WHEN RUNNING APPLICATOR IN THE FIELD.
- SPARE FEED CAM STORAGE LOCATION REFER TO INSTRUCTION SHEET FOR ADDITIONAL INFORMATION.
- TO CONVERT THE APPLICATOR TO A NON-CARRIER CUTTING STYLE, REMOVE ITEM 13 AND ATTACH TO THE LOCATION ON THE BACK SIDE OF THE HOUSING. REFER TO INSTRUCTION SHEET FOR ADDITIONAL INFORMATION.
- WHEN ASSEMBLING A NON CRIMP HEIGHT ADJUST APPLICATOR (-6) USE SHIMS FROM ITEM 260 TO ACHIEVE A NOMINAL SHIM HEIGHT OF 4.78.
- CUT TO LENGTH AT ASSEMBLY.

**\*WARNING**  
ON INSTALLATION, SET WIRE DISC, ITEM 40 TO LARGEST WIRE SIZE SETTING. USE OF SETTINGS BELOW MINIMUM REQUIRED CRIMP HEIGHT SETTING WILL CAUSE DAMAGE TO CRIMP TOOLING.

| -77 | -7 | -6 | -5 | -2 | -1 | PART NO   | DESCRIPTION                     | ITEM NO |
|-----|----|----|----|----|----|-----------|---------------------------------|---------|
| -   | -  | 1  | -  | -  | -  | 2119957-2 | APPLICATOR SHIM PACK            | 260     |
| -   | 1  | -  | 1  | 1  | 1  | 8-21084-0 | O-RING, .676 ID, .070 DIA. MAT. | 252     |

**ATLANTIC VERSION**  
Shown on sheets 1 of 4 & 2 of 4  
(Pacific version shown on sheets 3 of 4 & 4 of 4)

| SET UP GAUGE | LOC | DIST | REVISIONS |           |    |      |
|--------------|-----|------|-----------|-----------|----|------|
| 2119599-1    | A   | 66   | REV       | DATE      | BY | APPD |
|              |     |      | B         | 20MAY2015 | MR | TE   |
|              |     |      | B1        | 13AUG2015 | JH | UG   |

|   |     |     |     |     |     |             |                                     |     |
|---|-----|-----|-----|-----|-----|-------------|-------------------------------------|-----|
| - | -   | -   | -   | 1   | -   | 2119640-1   | PUSH ROD, AIR FEED                  | 250 |
| - | -   | -   | -   | 1   | -   | 2079988-1   | BUSHING, LCH5-12, MISUMI            | 249 |
| - | -   | -   | -   | 1   | -   | 2119641-1   | FEED CAM, AIR FEED                  | 248 |
| - | 1   | -   | 1   | 1   | 1   | 2119798-1   | DETENT PIN                          | 247 |
| - | 1   | -   | 1   | 1   | 1   | 1-22279-3   | SPRING, COMPRESSION                 | 246 |
| - | -   | 1   | -   | -   | -   | 2119758-1   | RAM, AMP STYLE, SIDE FEED, NON-ADJ. | 245 |
| - | 1   | 1   | 1   | 1   | 1   | 2119082-5   | CAM, SNAIL, INSULATION ADJUSTMENT   | 244 |
| - | 1   | 1   | 1   | 1   | 1   | 2079764-1   | WASHER, WAVE SPRING, CREST-TO-CREST | 243 |
| - | 1   | 1   | 1   | 1   | 1   | 2119083-1   | RETAINER, INSULATION DIAL           | 242 |
| - | 1   | 1   | 1   | 1   | 1   | 7-18023-7   | SCR, SKT HD CAP M3 X 4.0            | 241 |
| - | -   | 2   | 2   | -   | -   | 2168400-6   | SHCS, LOW HEAD, RoHS, M5 X 16       | 240 |
| - | -   | -   | -   | -   | 1   | 2119580-1   | MECHANICAL FEED ASSEMBLY            | 239 |
| - | -   | -   | -   | 1   | -   | 2063440-1   | AIR FEED MODULE                     | 238 |
| - | -   | 1   | 1   | -   | -   | 2119740-2   | TAG, IDENTIFICATION                 | 213 |
| - | -   | 1   | 1   | -   | -   | 1901094-3   | SPACER, FEEDER                      | 198 |
| - | -   | -   | -   | 2   | -   | 21045-3     | RING, RETAIN, EXTERN, 3/16 CRESCENT | 172 |
| - | 1   | 1   | 1   | 1   | 1   | 994969-1    | MAGNET, RARE EARTH HIGH ENERGY      | 166 |
| - | REF | REF | REF | REF | REF | 994970-2    | COUNTER, MAGNETIC                   | 164 |
| - | -   | -   | -   | 1   | -   | 240638-1    | SPRING, FEED FINGER                 | 163 |
| - | -   | -   | -   | 1   | -   | 3-23627-7   | PIN, RETAIN, GRVD, 3/16 X .854      | 137 |
| - | -   | -   | -   | 1   | -   | 2119799-1   | HOLDER, FEED FINGER, AF             | 136 |
| - | -   | REF | REF | -   | -   | SEE NOTE 4  | MEMORY CHIP, PROGRAMMED             | 135 |
| - | -   | 1   | 1   | -   | -   | 1633743-1   | SERVO FEED LATCH ASM                | 133 |
| - | -   | REF | REF | -   | -   | 2119944-1   | FEED FINGER ASSEMBLY, SF            | 117 |
| - | 1   | 1   | 1   | 1   | 1   | 455888-6    | SPACER, CRIMPER                     | 82  |
| - | 1   | 1   | 1   | 1   | 1   | 2119956-1   | DOCUMENTATION PACKAGE               | 71  |
| - | 1   | 1   | 1   | 1   | 1   | 2119791-5   | DEPRESSOR, WIRE                     | 70  |
| - | 1   | -   | -   | 1   | 1   | 2119740-1   | TAG, IDENTIFICATION                 | 67  |
| - | 2   | 2   | 2   | 2   | 2   | 2168078-1   | SCREW, DRIVE, RH, RoHS, 2 x .188    | 66  |
| - | 1   | -   | 1   | 1   | 1   | 2119793-1   | LIMITER, ADJUSTMENT BOLT            | 63  |
| - | 3   | -   | 3   | 3   | 3   | 992763-5    | SCR, SET, SOC, CONE POINT, M3 x 4.0 | 62  |
| - | 1   | 1   | 1   | 1   | 1   | 2079383-4   | SCR, BHSC, RoHS (M4 X 8)            | 60  |
| - | -   | -   | -   | 1   | 1   | 5-18022-5   | SCR, HEX HD CAP, M4 X 6.0           | 59  |
| - | -   | -   | -   | 1   | 1   | 1338685-1   | PAWL, FEED                          | 56  |
| - | 4   | 4   | 4   | 4   | 4   | 2168400-1   | SHCS, LOW HEAD, RoHS, M4 X 12       | 54  |
| - | 2   | 2   | 2   | 2   | 2   | 2168083-8   | SCR, SKT HD CAP, RoHS, M4 X 16      | 53  |
| - | 1   | 1   | 1   | 1   | 1   | 5018030-1   | NUT, HEX, REG, RoHS, M3             | 52  |
| - | 1   | 1   | 1   | 1   | 1   | 811242-5    | BUMPER, HOLD DOWN                   | 51  |
| - | 1   | 1   | 1   | 1   | 1   | 690753-2    | SPACER, TONKER                      | 50  |
| - | -   | -   | -   | 1   | 2   | 18023-9     | SCR, SKT HD CAP M4 X 6.0            | 49  |
| - | -   | -   | -   | -   | 1   | 2119652-1   | FEED CAM, PRE FEED                  | 48  |
| - | -   | -   | -   | -   | 1   | 2119653-1   | FEED CAM, POST FEED                 | 47  |
| - | 1   | 1   | 1   | 1   | 1   | 2119656-9   | APPLICATOR BASIC ASSEMBLY, SF       | 46  |
| - | 1   | -   | 1   | 1   | 1   | 2119370-1   | RAM, AMP STYLE, SIDE FEED           | 44  |
| - | 1   | 1   | 1   | 1   | 1   | 2079383-7   | SCR, BHSC, RoHS (M8 X 25)           | 41  |
| - | 1   | -   | 1   | 1   | 1   | 2119645-1   | DISC, NUMBERED FA WIRE ADJUSTMENT   | 40  |
| - | 1   | -   | 1   | 1   | 1   | 2119957-1   | APPLICATOR SHIM PACK                | 39  |
| - | 1   | 1   | 1   | 1   | 1   | 2119644-1   | RAM WASHER, PRECISION               | 38  |
| - | 1   | 1   | 1   | 1   | 1   | 2119085-1   | FA HEAD, ATLANTIC STYLE             | 37  |
| - | 1   | -   | 1   | 1   | 1   | 2119092-1   | BOLT, ADJUSTMENT                    | 35  |
| - | 1   | 1   | 1   | 1   | 1   | 2-1752356-0 | SUPPORT, TERMINAL                   | 34  |
| - | 2   | 2   | 2   | 2   | 2   | 2079383-5   | SCR, BHSC, RoHS (M4 X 20)           | 33  |
| - | 1   | 1   | 1   | 1   | 1   | 2161328-1   | HEX HEAD, FLANGED, M5 x 8mm LONG    | 32  |
| - | 1   | 1   | 1   | 1   | 1   | 1320908-3   | SPACER, STRIP GUIDE                 | 30  |
| - | 1   | 1   | 1   | 1   | 1   | 2119959-1   | ASSEMBLY, STRIP GUIDE               | 29  |
| - | 1   | 1   | 1   | 1   | 1   | 455888-3    | SPACER, CRIMPER                     | 28  |
| - | 1   | 1   | 1   | 1   | 1   | 1320928-2   | STRIP GUIDE                         | 24  |
| - | 1   | 1   | 1   | 1   | 1   | 2168083-2   | SCR, SKT HD CAP, RoHS, M4 X 8.0     | 21  |
| - | 2   | 2   | 2   | 2   | 2   | 1-18028-2   | WASHER, FLAT, REG M4                | 20  |
| - | 1   | 1   | 1   | 1   | 1   | 2119533-1   | STRIPPER, SIDE FEED                 | 19  |
| - | 1   | 1   | 1   | 1   | 1   | 2119806-1   | INSERT, SHEAR                       | 13  |
| - | 1   | 1   | 1   | 1   | 1   | 3-22280-3   | SPRING, COMPRESSION                 | 12  |
| - | 1   | 1   | 1   | 1   | 1   | 1-356885-4  | STOP, SHEAR                         | 11  |
| - | 1   | 1   | 1   | 1   | 1   | 2119805-1   | SHEAR HOLDER, FRONT                 | 10  |
| - | 1   | 1   | 1   | 1   | 1   | 1803095-1   | FLOATING SHEAR, FRONT               | 9   |
| - | 1   | 1   | 1   | 1   | 1   | 4-1803171-3 | ANVIL, COMBINATION                  | 8   |
| - | 1   | 1   | 1   | 1   | 1   | 2-240641-4  | SPACER                              | 7   |
| - | -   | -   | -   | -   | -   | -           | -                                   | 6   |
| - | 1   | 1   | 1   | 1   | 1   | 2119757-8   | DEPRESSOR, SHEAR                    | 5   |
| - | 1   | 1   | 1   | 1   | 1   | 238011-4    | BLOCK, CRIMPER SPACER               | 4   |
| - | 1   | 1   | 1   | 1   | 1   | 3-1633966-1 | CRIMPER, INSULATION O               | 3   |
| - | -   | -   | -   | -   | -   | -           | -                                   | 2   |
| - | 1   | 1   | 1   | 1   | 1   | 6-1633713-3 | CRIMPER, WIRE PREMIUM               | 1   |

|  |  |   |  |   |   |
|--|--|---|--|---|---|
| DIMENSIONS:<br>                        |  | TOLERANCES UNLESS OTHERWISE SPECIFIED:<br>0 PLC ±<br>1 PLC ±<br>2 PLC ±<br>3 PLC ±<br>4 PLC ±<br>ANGLES ± |  | DATE: 19 JAN 2015<br>CHK: R.O. WILSON<br>K.J. STAKEM<br>APVD: T.L. ELBIN<br>DATE: 26 JAN 2015 | TE Connectivity<br>Harrisburg, PA 17105-3608          |
| MATERIAL:                              |  | FINISH:   |  | WEIGHT:   | SIZE: A1<br>CASE CODE: 00779<br>DRAWING NO: C=2266696 |
| Customer Accessible Production Drawing |  |   |  | SCALE: 1:2  | SHEET: 1 of 4<br>REV: B1                              |

| LOC | DIST | REV | DATE | BY | APPV |
|-----|------|-----|------|----|------|
| A   | 66   |     |      |    |      |
|     |      |     |      |    |      |
|     |      |     |      |    |      |

# FEED TYPE MECHANICAL



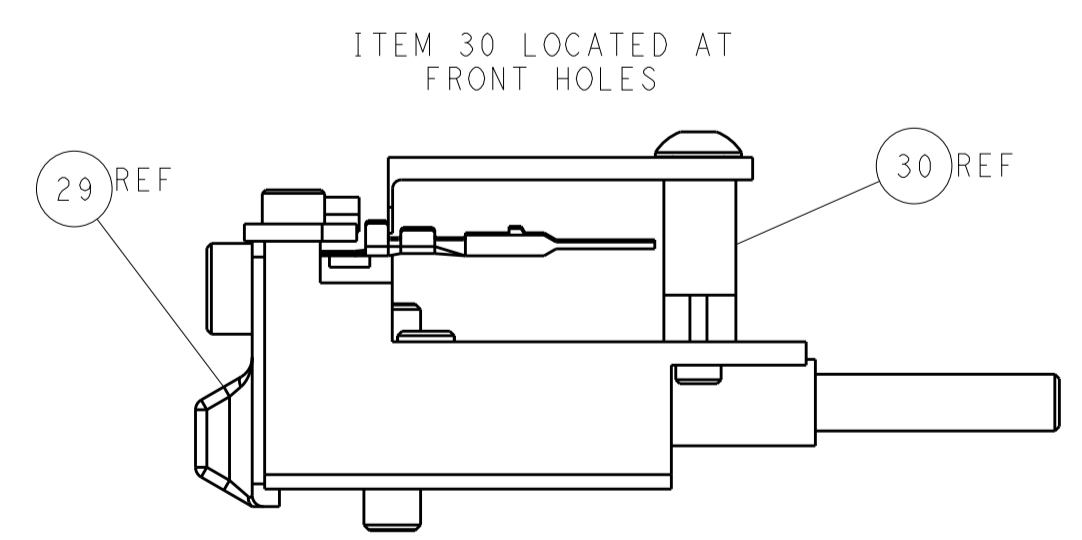
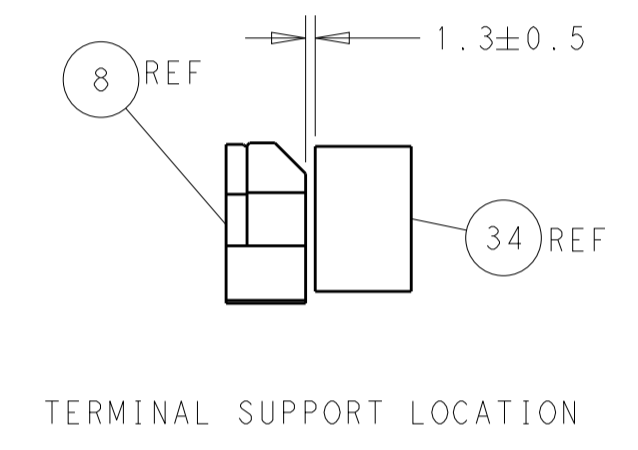
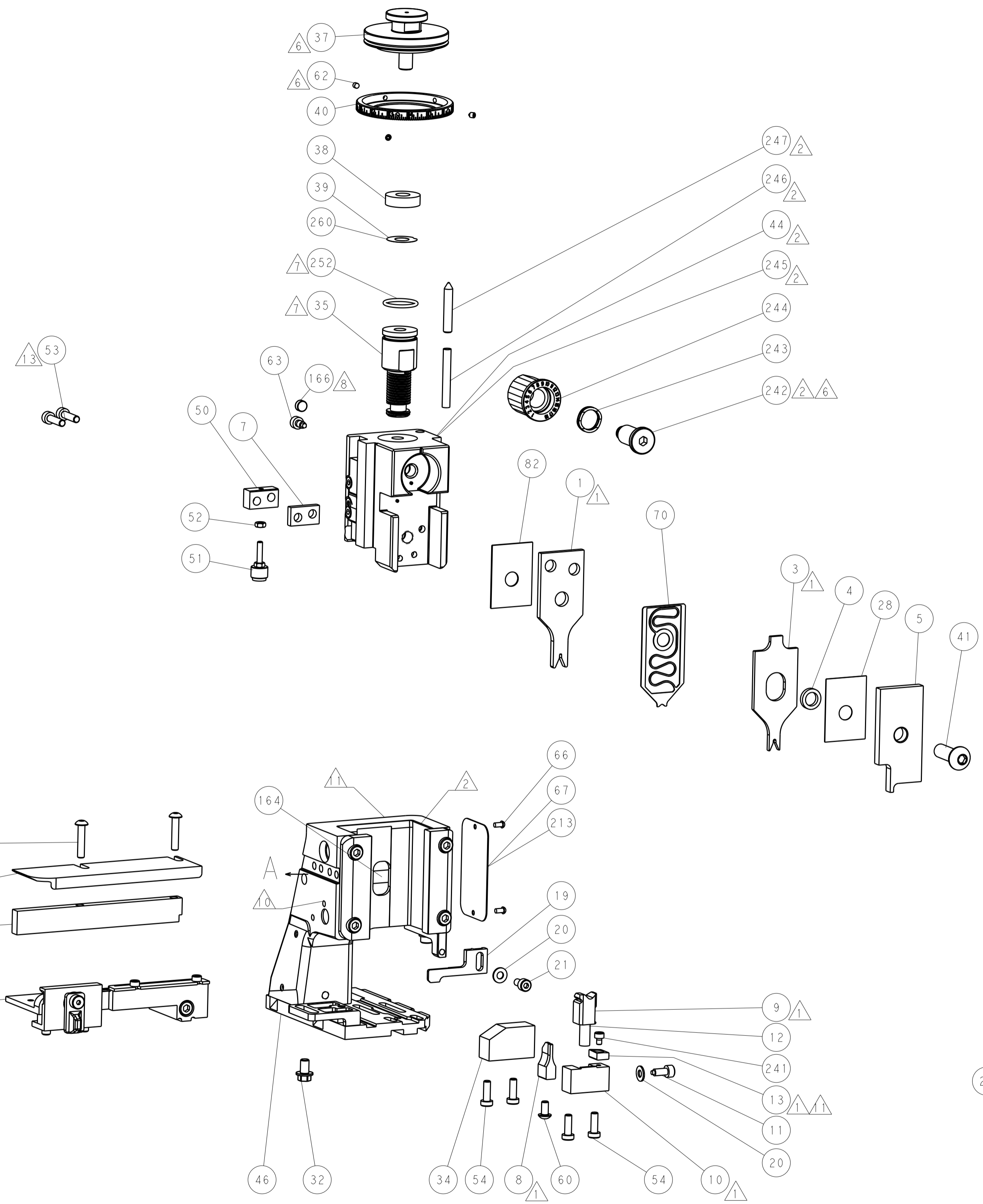
# PNEUMATIC



# SERVO LATCH PLATE



# CAM POSITIONS



**ATLANTIC VERSION**  
 Shown on sheets 1 of 4 & 2 of 4  
 (Pacific version shown on sheets 3 of 4 & 4 of 4)

|                   |  |   |  |   |  |   |  |                   |  |
|-------------------|--|---|--|---|--|---|--|-------------------|--|
| DIMENSIONS:<br>mm |  | TOLERANCES UNLESS OTHERWISE SPECIFIED:<br>0 PLC ±<br>1 PLC ±<br>2 PLC ±<br>3 PLC ±<br>4 PLC ±<br>ANGLES ± |  | DWG: R. Q. WILSON 19 JAN 2015<br>CHK: K. J. STAKEM 26 JAN 2015<br>APVD: T. L. ELBIN 26 JAN 2015 |  | NAME: Ocean Side Feed Applicator<br>SIZE: A1<br>CAGE CODE: 00779<br>DRAWING NO: 2266696 |  | RESTRICTED TO: B1 |  |
| MATERIAL:         |  | FINISH:   |  | WEIGHT:   |  | SCALE: 1:2  |  | SHEET 2 OF 4      |  |



| LOC |    | DIST |     | REVISIONS   |      |     |      |
|-----|----|------|-----|-------------|------|-----|------|
| A   | 66 | P    | LTM | DESCRIPTION | DATE | DMN | APVD |
|     |    | -    | -   | SEE SHEET 1 | -    | -   | -    |

# FEED TYPE MECHANICAL



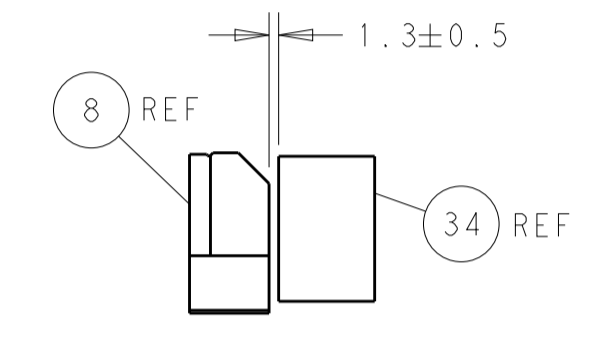
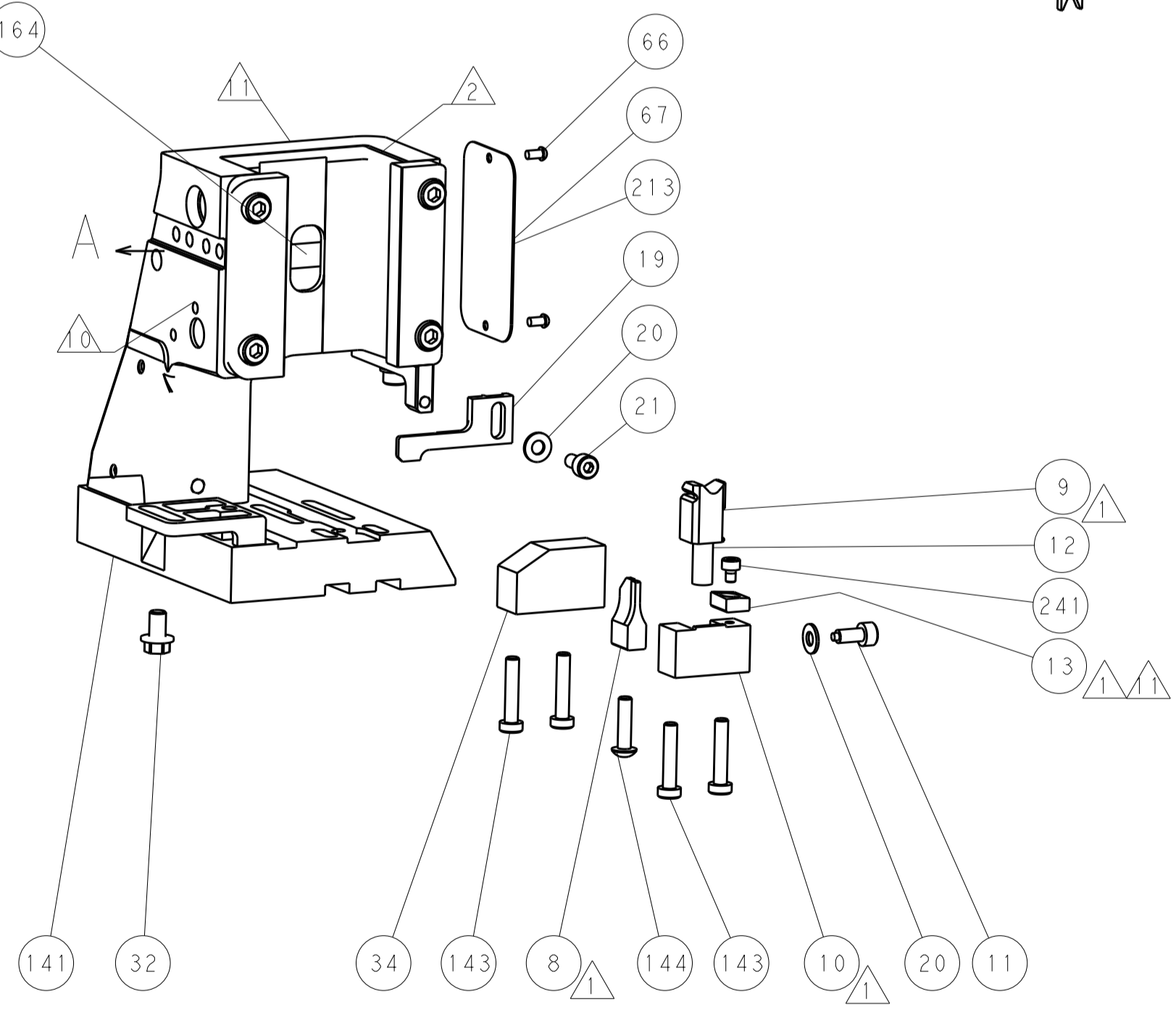
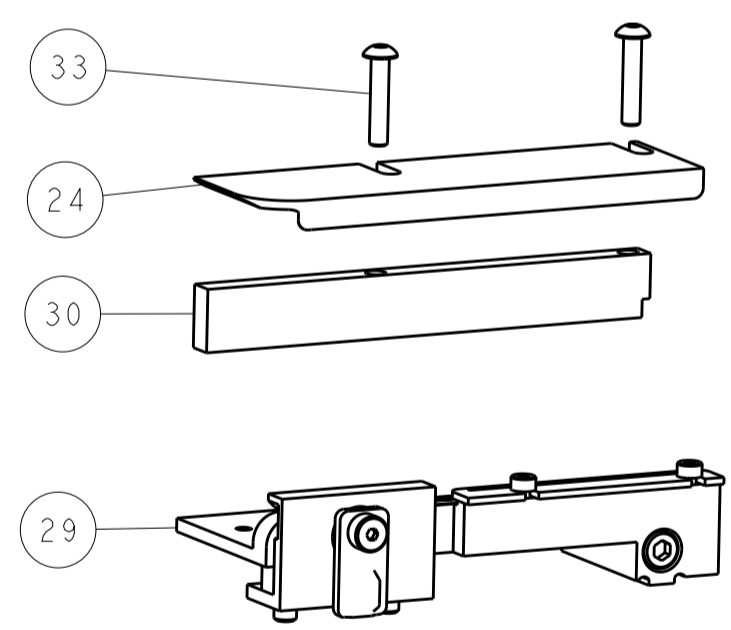
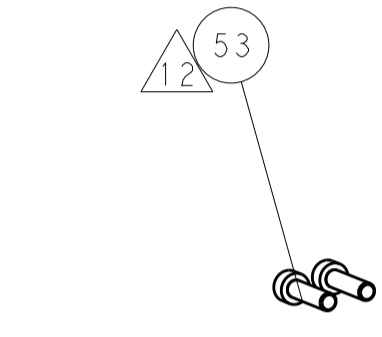
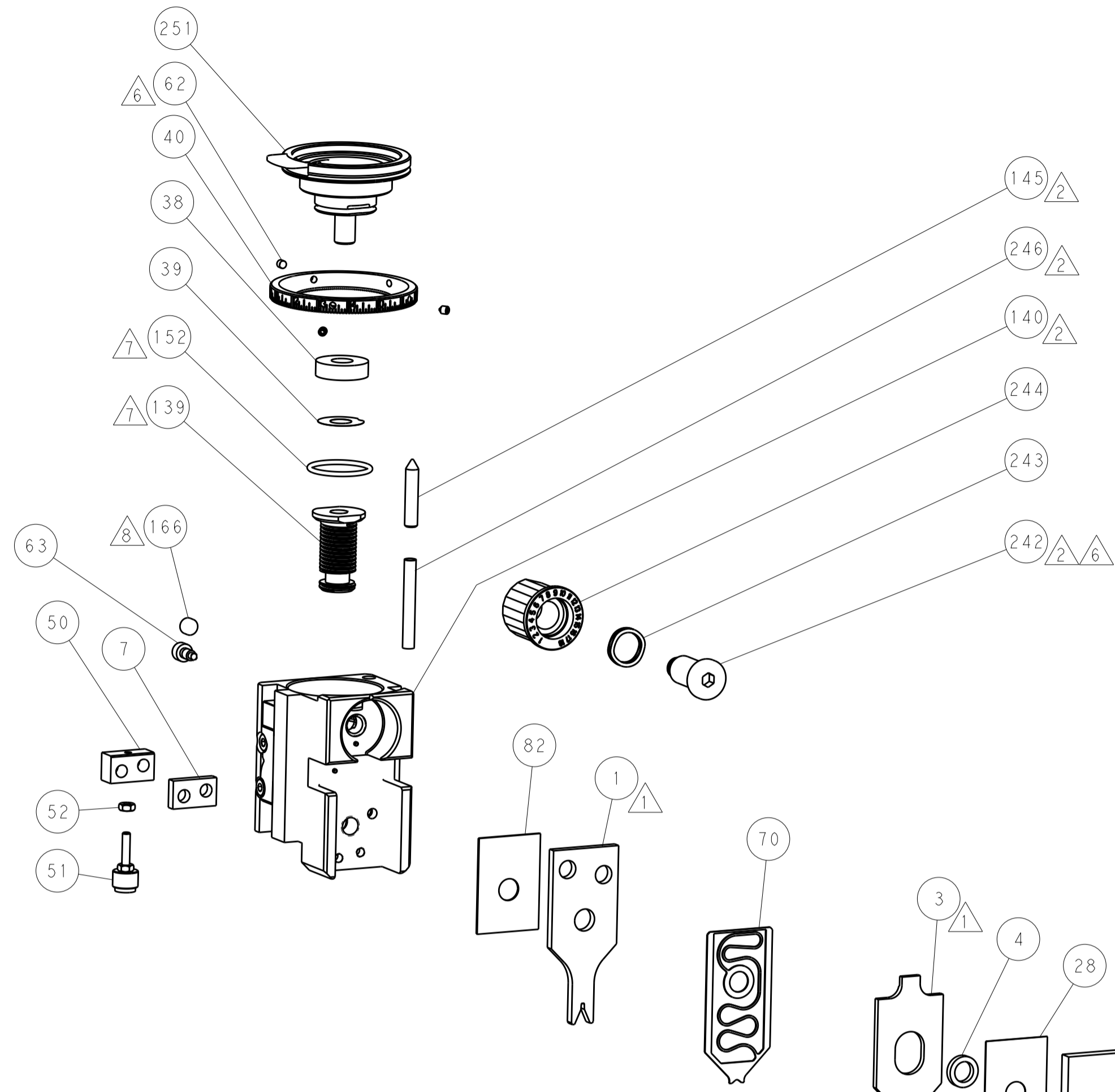
# PNEUMATIC



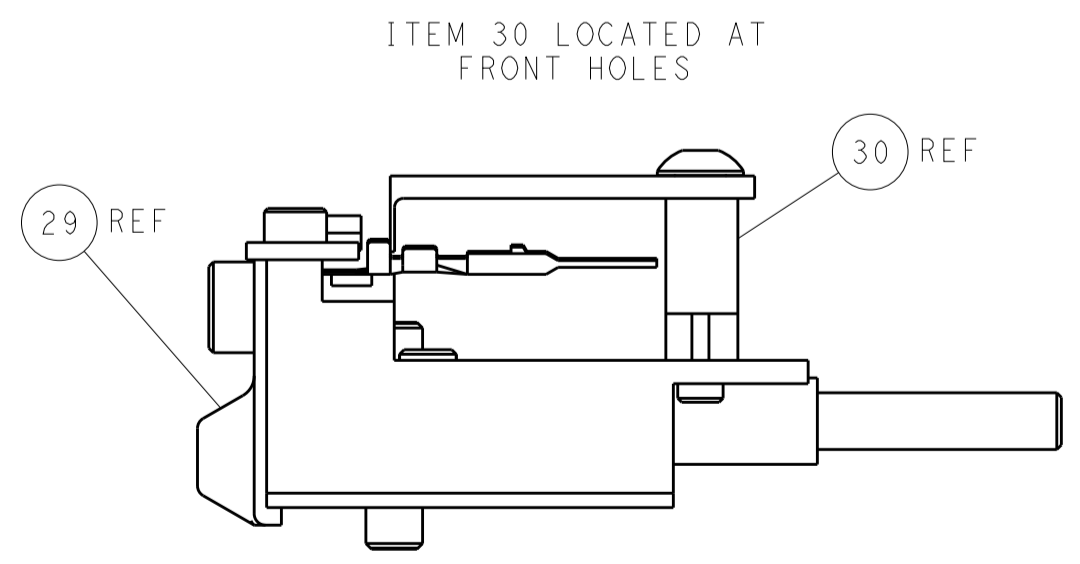
# SERVO LATCH PLATE



# CAM POSITIONS



TERMINAL SUPPORT LOCATION



FEED TRACK POSITION  
GUIDE BY INSULATION BARREL

**PACIFIC VERSION**  
 Shown on sheets 3 of 4 & 4 of 4  
 (Atlantic version shown on sheets 1 of 4 & 2 of 4)

|             |        |  |  |                            |                           |                       |  |
|-------------|--------|--|--|----------------------------|---------------------------|-----------------------|--|
| DIMENSIONS: |        | TOLERANCES UNLESS OTHERWISE SPECIFIED: |  | DWG: R.O. WILSON 19JAN2015 |                           | NAME: TE Connectivity |  |
| mm          | 0 PLC  | ±                                      |  | CHK: K.J. STAKEM 26JAN2015 | Harrisburg, PA 17105-3608 |                       |  |
|             | 1 PLC  | ±                                      |  | APVD: T.L. ELBIN 26JAN2015 | PRODUCT SPEC:             |                       |  |
|             | 2 PLC  | ±                                      |  |                            | APPLICATION SPEC:         |                       |  |
|             | 3 PLC  | ±                                      |  |                            | MATERIAL:                 |                       |  |
|             | 4 PLC  | ±                                      |  |                            | FINISH:                   |                       |  |
|             | ANGLES | ±                                      |  |                            | WEIGHT:                   |                       |  |
|             |        |  |  |                            | SCALE: 1:2                |                       |  |
|             |        |  |  |                            | SHEET 4 OF 4              |                       |  |
|             |        |  |  |                            | REV: B1                   |                       |  |