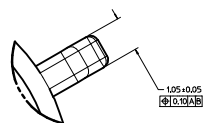
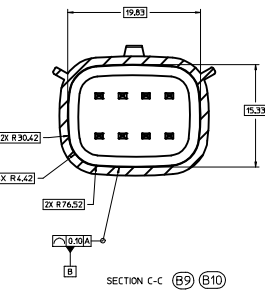
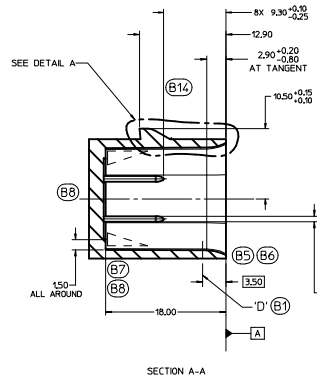
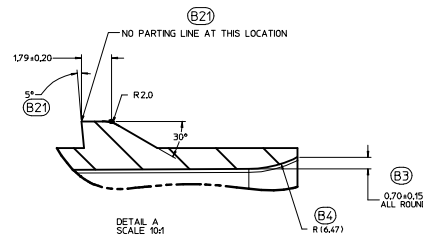
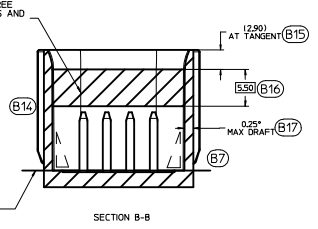
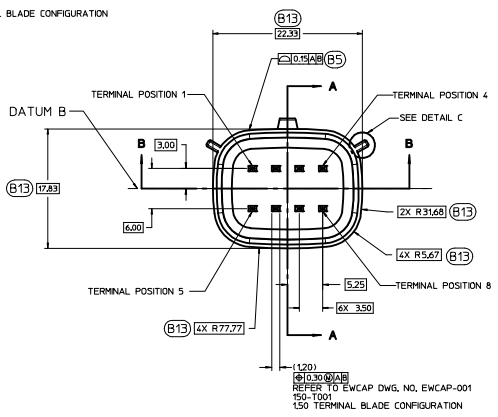
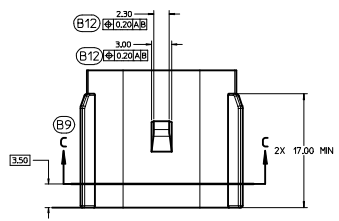
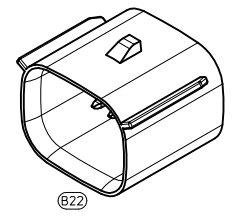
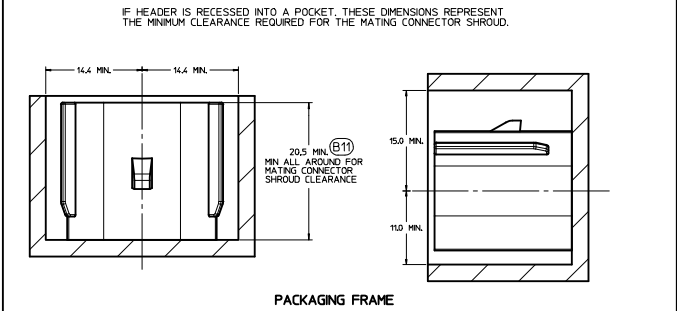


150-S-008-2-002	D	BLACK
150-S-008-2-002	C	DK GRAY
150-S-008-2-802	B	LT GRAY
150-S-008-2-A02	A	BLACK



DETAIL C SCALE 20:1 APPLICABLE TO ALL KEYING OPTION VIEWS FOR POSITIONS

CONSTRUCTION BELOW THIS SURFACE IS NOT CONTROLLED BY EWCAP. NO PLASTIC FEATURES MAY EXTEND ABOVE THIS SURFACE.



IF HEADER IS RECESSED INTO A POCKET, THESE DIMENSIONS REPRESENT THE MINIMUM CLEARANCE REQUIRED FOR THE MATING CONNECTOR SHROUD.

NOTICE
THIS DRAWING OR PORTIONS OF IT, ARE CONTROLLED BY THE ELECTRICAL WIRING COMPONENTS APPLICATION PARTNERSHIP (EWCAP), A SUBGROUP OF THE UNITED STATES CONSORTIUM FOR AUTOMOTIVE RESEARCH LLC (USCAR). USCAR IS A PARTNERSHIP BETWEEN CHRYSLER GROUP LLC, FORD MOTOR COMPANY, AND GENERAL MOTORS CORPORATION ANY CHANGE TO A EWCAP CONTROLLED PORTION OF THIS DRAWING, INCLUDING A "RECORD CHANGE" MUST BE APPROVED, IN WRITING, BY THE RESPONSIBLE EWCAP MEMBER FROM EACH USCAR COMPANY. EACH EWCAP MEMBER AUTHORIZED TO SIGN FOR HIS OR HER COMPANY IS RESPONSIBLE FOR OBTAINING ALL NECESSARY APPROVALS WITHIN THAT COMPANY PRIOR TO SIGNING FOR APPROVAL OF THE CHANGE. EWCAP EXPRESSLY PROHIBITS ANY PARTY FROM CHANGING EITHER ANY EWCAP CONTROLLED PORTION OF THIS DRAWING OR ANY ASSOCIATED TOOLING BEFORE RECEIVING AN APPROVAL SIGNED BY AN AUTHORIZED REPRESENTATIVE FROM EACH EWCAP PARTNER. REFERENCE TO THE SIGNED APPROVAL FORM MUST BE ENTERED IN THIS DRAWING'S CONTROL COLUMN.

- NOTES: UNLESS OTHERWISE SPECIFIED (B18)
- ALL DIMENSIONS SHOWN IN MILLIMETERS.
 - DIMENSIONING AND TOLERANCING PER ASME Y14.5M-1994
 - 0.25 RADI ON ALL CORNERS SHOWN SHARP.
 - UNSPECIFIED RADI: 0.25 EXCEPT AS NOTED.
 - STANDARD COLORS FOR POLARIZATION (SEE CHART). DEVIATION REQUIRES APPROVAL OF AUTHORIZED PERSON.
 - REFER TO "SAE/USCAR 12 CONNECTOR GUIDELINES" FOR ADDITIONAL REQUIREMENTS.
 - EXCEPT WHERE NOTED, DRAFT ON OUTSIDE SURFACES IS PERMISSIBLE WITHIN TOLERANCE.
 - SYMBOL INDICATES DRAFT DIRECTION.
 - FOR TERMINAL MATERIAL, DIMENSIONAL, AND COATING REQUIREMENTS AND ANY BLADE TERMINAL DESIGN INFORMATION NOT SHOWN ON THIS DRAWING SEE EWCAP DRW. NO. EWCAP-001
 - A FULL SHROUD ON THE MATING CONNECTOR IS REQUIRED TO INSURE THAT THE CONNECTOR-HEADER POLARIZATION FEATURES OPTIONS A THRU D WILL FUNCTION. THE FULL SHROUD ALSO PREVENTS SCOPING DAMAGE TO THE HEADER PINS. REFER TO "SAE/USCAR-12 CONNECTOR DESIGN GUIDE LINES" FOR ADDITIONAL INFORMATION.
 - REFER TO USCAR/EWCAP PART LIST AS FOUND ON WEBSITE <http://www.uscarcorp.com>
 - THIS IS A 100% CAD GENERATED PART. THE CAD MATHEMATICAL DATA IS THE MASTER FOR THIS PART. FOR DIMENSIONAL OR ANY INFORMATION NOT SHOWN ON THIS DRAWING, ANALYZE THE CAD MODEL.

REV	DATE	BY	CHK	DESCRIPTION
095	B22			CHANGED ISO VIEW SCALE TO 4:1. WAS 1:1
095	B21			ADDED PARTING LINE NOTE TO DETAIL A. MIN. 5°
095	B20			CORRECTED CHRYSLER GROUP LLC NOMENCLATURE
095	B19			MOVED NOTE TO SECTION B-B
095	B18			UPDATED NOTES
095	B17			REMOVED 15.20 AND 2.50 FROM SECTION A-A
095	B16			ADDED (3.53)
095	B15			ADDED AT TANGENT NOTE
095	B14			REMOVED DATUM D
095	B13			ADDED BASIC DIMENSIONS FOR PROFILE CONTROL
095	B12			ADDED (Ø10.20) A B
095	B11			DIMENSIONED TO DATUM A
095	B10			SEALING SURFACE DIMENSIONS MOVED TO SECTION C-C
095	B9			ADDED SECTION C-C
095	B8			REMOVED 15.20 AND 2.50 FROM SECTION A-A
095	B7			ADDED DRAFT ANGLE DIRECTION
095	B6			REMOVED 0.20 ±0.10 ±0.20 ALL AROUND
095	B5			REPLACED WALL THICKNESS CONTROL WITH DRAFFLE OF A SURFACE
095	B4			ADDED R16.47
095	B3			ADDED 0.70 ±0.15 ALL AROUND
095	B2			UPDATED CONNECTOR COLORS
095	B1			SURFACE 17 RELOCATED TO (3.53) WAS AT 8.20
095	A			RELEASED

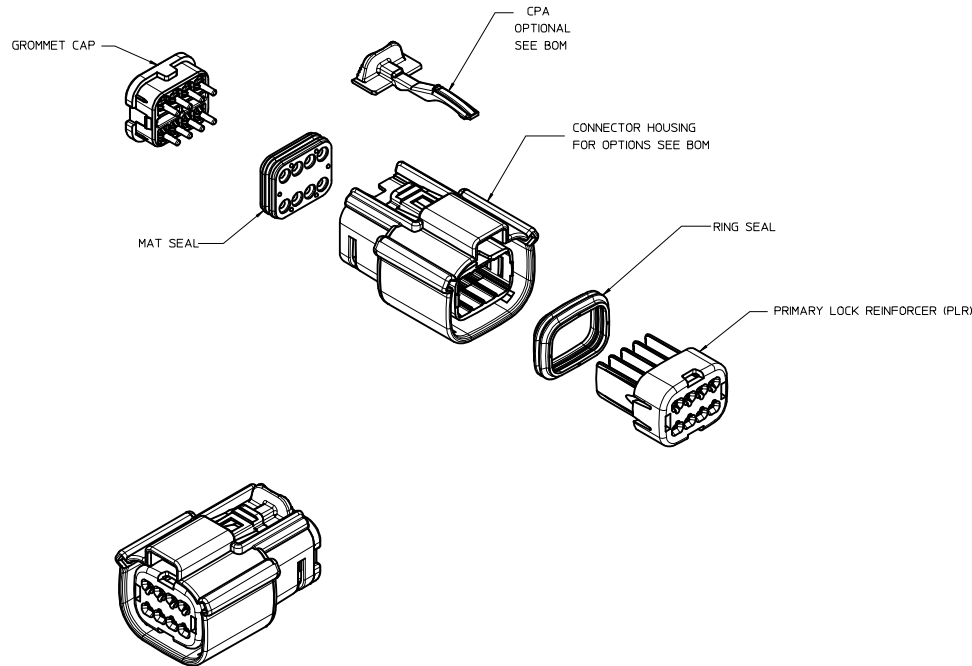
DATE	REVISION RECORD	DATE	DWN	CHK
10-17-07				DG
03-21-12				MV
03-21-12				KC

TOLERANCES UNLESS OTHERWISE SPECIFIED			
DIMENSIONS ARE IN MILLIMETERS			
FRAMES	ANGLES	XX	XX
±0.2	±3°	XX	±0.10

SCALE	4:1	DRAWN BY	K.LUNNINGHAM	DESIGNED BY	J.VANSLAMBROUCK	DATE	03-21-12
TITLE	DIRECT CONNECT INTERFACE 8 WAY (2 X 4) 1.5 MM SEALED MALE						
SHEET	DRWG. NUMBER	REV	DATE	DO NOT SCALE DRAWING	REVISION LEVEL		
10F-1	150-S-008-2-202	E		CONFORM AND DIMENSIONS	B		



TABLE OF CONTENTS	
SHEET NO.	SHEET DESCRIPTION
1	NOTES
2	KEY CONFIGURATIONS
3	RECEPTACLE SEALED ASSEMBLY
4	WIRE DRESS COVER NOTES
5	WIRE DRESS COVER
6	WIRE DRESS COVER CONFIGURATIONS
7-9	BOM



NOTES: VALID UNLESS OTHERWISE SPECIFIED

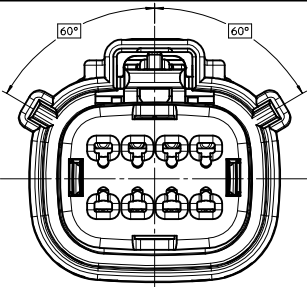
1. GENERAL:
 - a. APPLICATION SPECIFICATION SEE: AS-33472-100
 - CONTAINS: PRODUCT INTRODUCTION, PRODUCT SUMMARY, CONNECTOR ASSEMBLY, PACKAGING INFORMATION, CONNECTOR MATING, SERVICE INSTRUCTIONS, ELECTRICAL CONTINUITY CHECKING, CRIMPING, AND TROUBLESHOOTING.
 - DESIGNED TO MATE WITH DEVICE CONNECTION AS SPECIFIED IN DRAWING EWCAP 150-S-008-2-Z02, AVAILABLE AT <http://ewcap.uscarteams.org/>.
 - DESIGNED TO MATE WITH BLADE SEALED ASSEMBLY AS SPECIFIED IN DRAWING SD-33482-081
 - FOR 15mm RECEPTACLE TERMINALS TO BE USED WITH THIS ASSEMBLY, SEE MOLEX DRAWING SD-33012-002.
 - SYSTEM TO BE USED WITH WIRE WITH DIAMETER RANGE OF 1.2mm TO 2.69mm.
 - ASSEMBLY SHIPPED WITH PLR AND CPA IN PRE-LOCK POSITION (SEE SECTION Z-Z PRE-LOCK).
 - IN THE EVENT THAT THE PLR IS FOUND IN THE SEATED (FINAL LOCK) POSITION, REFER TO MOLEX SPECIFICATION PS-34646-001, AVAILABLE AT www.molex.com <http://www.molex.com>.
 - ASSEMBLY CONFORMS TO SAE/USCAR-2 REV.4 WITH THE FOLLOWING EXCEPTIONS:
 - ENGAGEMENT FORCE TO MOVE CPA FROM PRE-LOCK TO FINAL LOCK POSITION WHEN UNMATED: 40N MIN.
 - DISENGAGEMENT FORCE TO MOVE CPA FROM FINAL LOCK TO PRE-LOCK POSITION: 3N MIN, 40N MAX
 - TERMINAL INSERTION FORCE FOR WIRE DIAMETER ABOVE 2.5mm NOT EXCEEDING 2.69mm SHALL NOT EXCEED 40 NEWTONS.
 - PLR REMOVAL FROM FINAL LOCK TO PRE-LOCK POSITION SHALL NOT EXCEED 130 NEWTONS.
 - b. PRODUCT SPECIFICATION SEE: PS-33472-000
 - CONTAINS: PRODUCT INTRODUCTION, PRODUCT SUMMARY, RATINGS (CURRENT, TEMPERATURE, SEALING, AND FLAMMABILITY), AND PRODUCT VALIDATION.
 - c. PACKAGING SPECIFICATION PER MOLEX DRAWING: PK-31300-903
 - d. PARTS MUST BE IN COMPLIANCE TO MOLEX CHEMICAL SUBSTANCES FOR PRODUCTS AND PACKAGING SPECIFICATION: ES-40000-5016
 - e. DATA MUST BE SUBMITTED UNDER THE MOLEX PART NUMBER TO IMDS (COMPANY ID#13255)
 - f. FOR INFORMATION ON 2X4 RECEPTACLE SEALED ASSEMBLY WITH CLIPSLOT SEE SD-33472-091
2. DESIGN - MATERIALS:
 - a. SEE BOM TABLE
3. DESIGN - GEOMETRY:
 - a. THIS IS A 100% CAD GENERATED PART. THE CAD MATHEMATICAL DATA IS THE MASTER FOR THIS PART. FOR DIMENSIONAL OR ANY INFORMATION NOT SHOWN ON THIS DRAWING, ANALYZE THE CAD MODEL.
 - b. GEOMETRIC DIMENSIONS AND TOLERANCES PER ASME Y14.5M - 1994
 - c. EDGES AND UNDIMENSIONED DETAILS PER ISO13715
 - d. CORNERS SHOWN AS SHARP TO BE R 0.2 MAX.
 - e. LETTERING SHALL BE 0.15 MAX RAISED IN 0.25 MAX RECESS PAD. THIS INCLUDES RECYCLING CODE, CAVITY ID, VENDOR IDENTIFICATION, AND CUSTOMER MATERIAL NUMBER.
 - f. VISUAL DEFECTS SHALL MEET COSMETIC STANDARD PS-45499-002 (Class B).
 - g. LASER MARKING: TBD

INSPECTION NUMBERR LOG
 LAST NUMBER USED:
 ADDED:
 REMOVED:

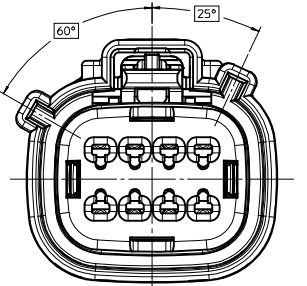
Y4	ADD NEW P/N 33472-0897
	UPDATED 33472-0803 33472-0804 33472-0808 33472-0809
Y3	PRODUCTION STATUS
	ADD NEW P/N 33472-0895 33472-0896
Y2	UPDATED NOMENCLATURE ON SHEET 3
Y1	ADD NEW P/N 33472-0894
Y	REDRAWN, ADDED WIRE DRESS COVER
REV	DESCRIPTION

ENTER DESCRIPTION EC NO: UAU2013-1018 DRAWN BY: 2013/01/04 CHKD: Y4 APPR: WKOSHY 2013/01/16 REV DESCRIPTION	QUALITY SYMBOLS	GENERAL TOLERANCES (UNLESS SPECIFIED)	DIMENSION STYLE	SCALE	DESIGN UNITS	THIRD ANGLE PROJECTION
	▽=0	4 PLACES ± ---	mm INCH	MM ONLY	2:1	METRIC
	▽=0	3 PLACES ± ---		DRAWN BY DATE		
	▽=0	2 PLACES ± 0.10		D. MARCOUX 06-13-02		
	1 PLACE ± 0.3		CHECKED BY DATE			
	0 PLACE ±		DGRIFFI THS 06-13-02			
			APPROVED BY DATE			
			FHOLUB 06-13-02			
			MATERIAL NO.			
			SEE BOM			
			ANGULAR ± 3 °			
			DRAFT WHERE APPLICABLE MUST REMAIN WITHIN DIMENSIONS			
			SIZE			
			D THIS DRAWING CONTAINS INFORMATION THAT IS PROPRIETARY TO MOLEX INCORPORATED AND SHOULD NOT BE USED WITHOUT WRITTEN PERMISSION			
			DOCUMENT NO.			
			SD-33472-081			
			SHEET NO.			
			1 OF 9			

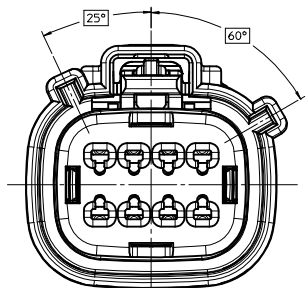
KEY CONFIGURATIONS



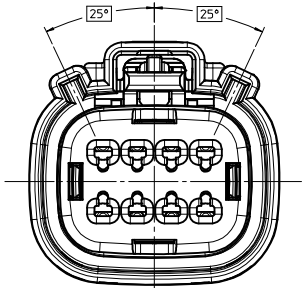
KEY A



KEY B



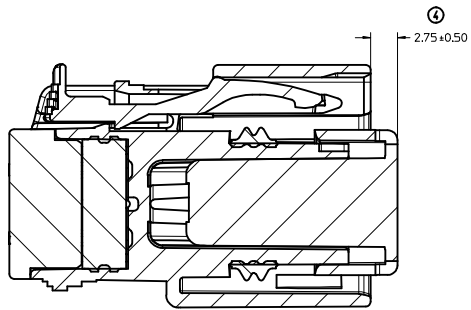
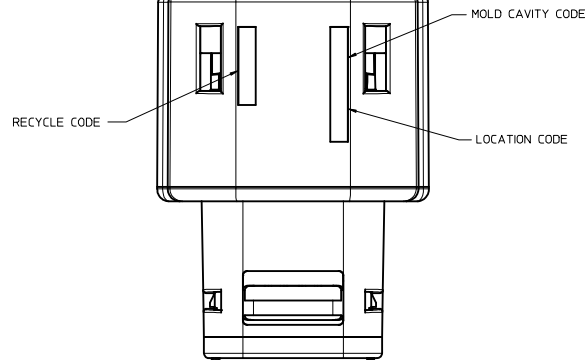
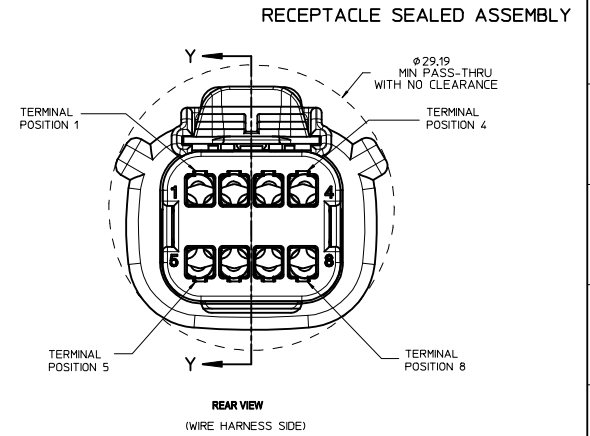
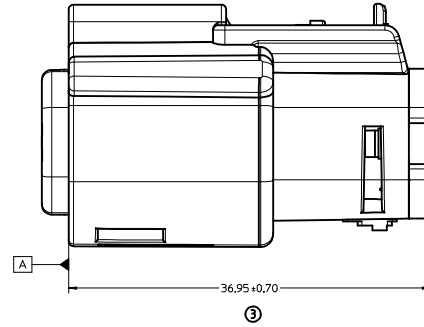
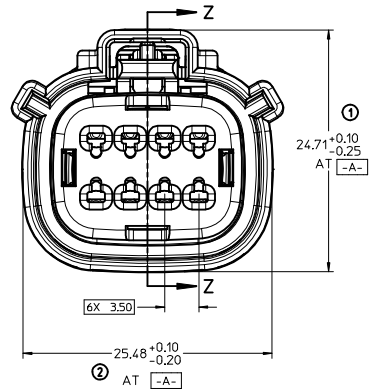
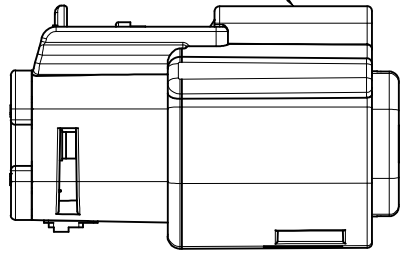
KEY C



KEY D

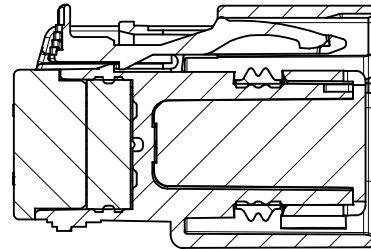
ENTER DESCRIPTION REC NO: UAU2013-1018 DRAWN BY CHKD: APPR: WOSHY 2013/01/16 2013/01/16 4 74	QUALITY SYMBOLS	GENERAL TOLERANCES (UNLESS SPECIFIED)	DIMENSION STYLE	SCALE	DESIGN UNITS	THIRD ANGLE PROJECTION	
	▽=0	4 PLACES ± .005	MM ONLY	4:1	METRIC	☉	
	▽=0	3 PLACES ± .005	INCH				
	▽=0	2 PLACES ± 0.10					
		1 PLACE ± 0.3					
		0 PLACE ±					
		ANGULAR ± 3 °					
		DRAFT WHERE APPLICABLE MUST REMAIN WITHIN DIMENSIONS					
			MATERIAL NO.	DATE	TITLE		
			SEE BOM	06-13-02	MX150 2X4 RECEPTACLE SEALED ASSEMBLY MAT SEAL		
			SIZE	DATE			
			D	06-13-02			
			DOCUMENT NO.			SHEET NO.	
			SD-33472-081			2 OF 9	
			THIS DRAWING CONTAINS INFORMATION THAT IS PROPRIETARY TO MOLEX INCORPORATED AND SHOULD NOT BE USED WITHOUT WRITTEN PERMISSION				

LASER MARKING ON THIS SURFACE
SEE NOTE 3g.



PRIMARY LOCK REINFORCEMENT (PLR) SHOWN
IN PRE-STAGED POSITION

SECTION Z-Z



PRIMARY LOCK REINFORCEMENT (PLR) SHOWN
IN FINAL-LOCK POSITION

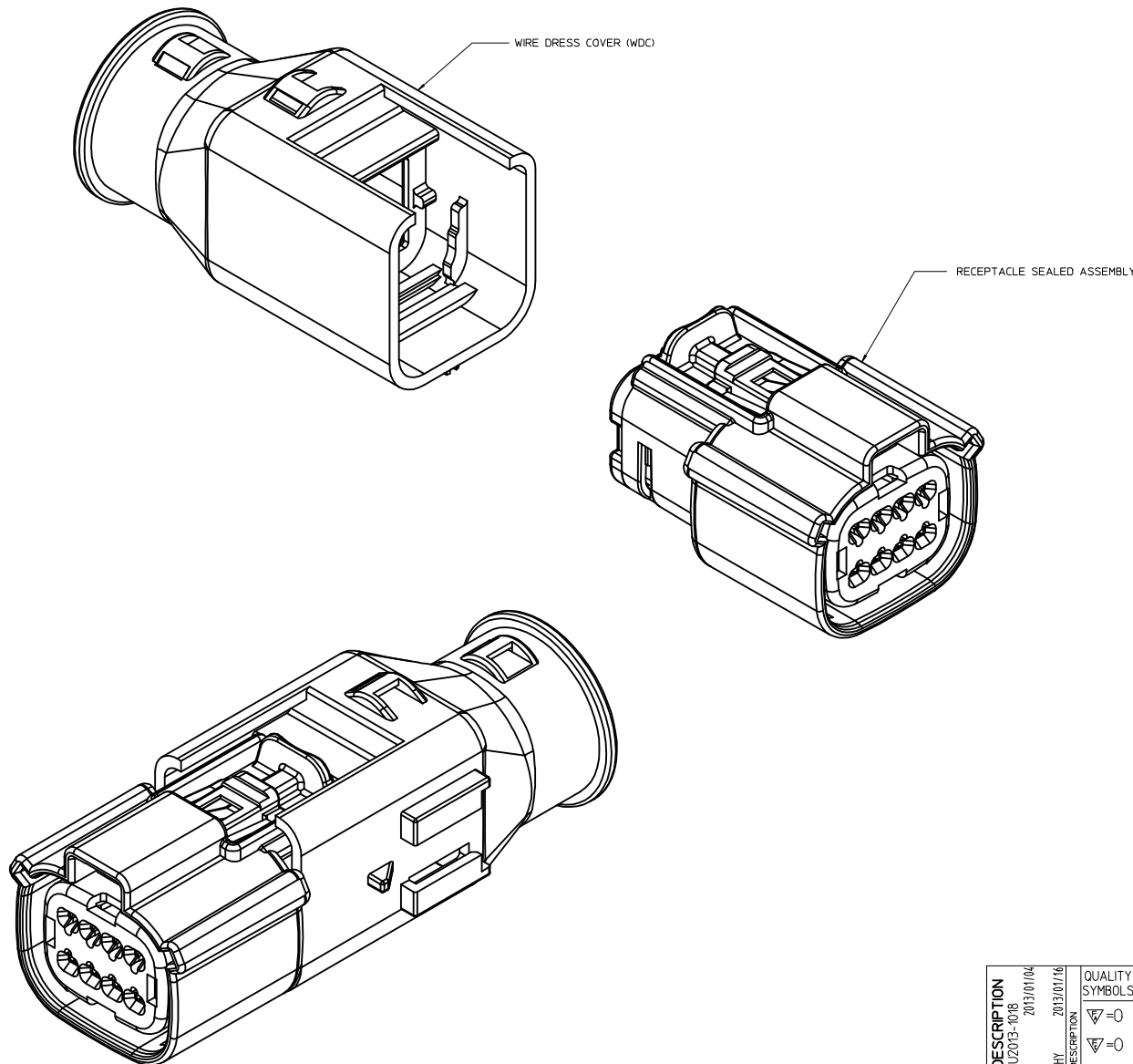
SECTION Y-Y

ENTER DESCRIPTION ELEC NO: UAU2013-1018 DRAWN BY: CHYD CHYD APPR: IKOSHY 2013/01/16 REV: 4	QUALITY SYMBOLS ∇=0 ∇=0 ∇=0	GENERAL TOLERANCES (UNLESS SPECIFIED) mm INCH 4 PLACES ± --- ± --- 3 PLACES ± --- ± --- 2 PLACES ± 0.10 ± --- 1 PLACE ± 0.3 ± --- 0 PLACE ± ±	DIMENSION STYLE MM ONLY	SCALE 4:1	DESIGN UNITS METRIC	THIRD ANGLE PROJECTION
	DRAWN BY: D. MARCOUX DATE: 06-13-02 CHECKED BY: D. GRIFFITHS DATE: 06-13-02 APPROVED BY: F. HOLUB DATE: 06-13-02	MATERIAL NO. SEE BOM	DOCUMENT NO. SD-33472-081	TITLE MX150 2X4 RECEPTACLE SEALED ASSEMBLY MAT SEAL	SHEET NO. 3 OF 9	
	DRAFT WHERE APPLICABLE MUST REMAIN WITHIN DIMENSIONS					
	THIS DRAWING CONTAINS INFORMATION THAT IS PROPRIETARY TO MOLEX INCORPORATED AND SHOULD NOT BE USED WITHOUT WRITTEN PERMISSION					

WIRE DRESS COVER NOTES

WIRE DRESS COVER NOTES: VALID UNLESS OTHERWISE SPECIFIED

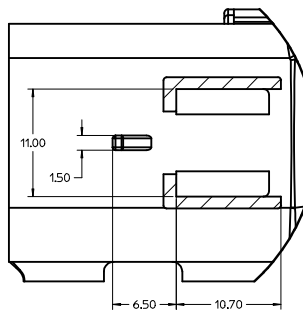
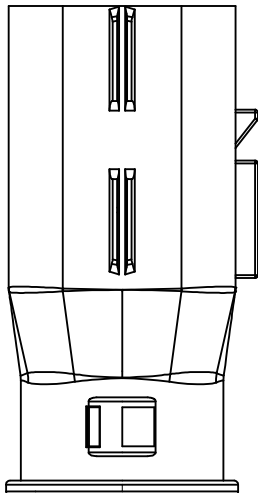
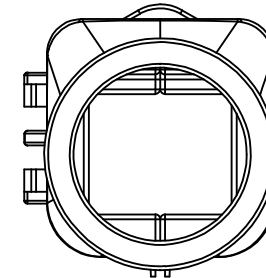
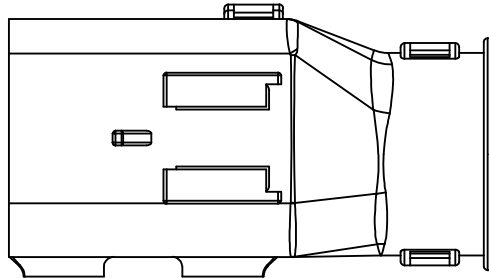
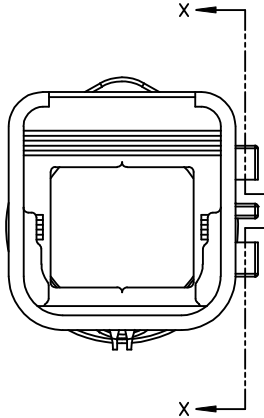
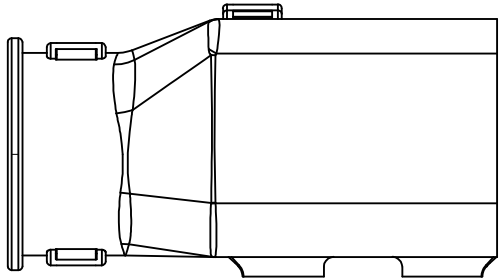
1. GENERAL:
 - a. APPLICATION SPECIFICATION SEE: AS-*****TBD*****
 - DESIGNED TO MATE WITH RECEPTACLE SEALED ASSEMBLY SPECIFIED IN MOLEX DRAWING SD-33472-081.
 - SYSTEM TO BE USED WITH WIRE WITHIN DIAMETER RANGE OF TBDmm TO TBDmm.
 - COMPONENTS ARE OPTIONAL AND MUST BE PURCHASED SEPARATELY
 - WIRE DRESS COVER DESIGN IS OWNED BY SCHLEMMER
 - b. PRODUCT SPECIFICATION SEE: PS-*****TBD*****
 - c. PACKAGING SPECIFICATION PER MOLEX DRAWING: PK-*****TBD*****
 - d. PARTS MUST BE IN COMPLIANCE TO MOLEX CHEMICAL SUBSTANCES FOR PRODUCTS AND PACKAGING SPECIFICATION: ES-40000-5016
 - e. DATA MUST BE SUBMITTED UNDER THE MOLEX PART NUMBER TO IMDS (COMPANY ID=13255)
2. DESIGN - MATERIALS:
 - a. PA66 0% GLASS FILLED
 - b. BLACK
3. DESIGN - GEOMETRY:
 - a. THIS IS A 100% CAD GENERATED PART. THE CAD MATHEMATICAL DATA IS THE MASTER FOR THIS PART. FOR DIMENSIONAL OR ANY INFORMATION NOT SHOWN ON THIS DRAWING, ANALYZE THE CAD MODEL.
 - b. GEOMETRIC DIMENSIONS AND TOLERANCES PER ASME Y14.5M - 2009
 - c. EDGES AND UNDIMENSIONED DETAILS PER ISO13715
 - d. CORNERS SHOWN AS SHARP TO BE R 0.2 MAX.
 - e. VISUAL DEFECTS SHALL MEET COSMETIC STANDARD PS-45499-002 (Class B).



ENTER DESCRIPTION DEC NO: JAU2013-1018 DRAWN BY: Y4 CHKD: APPR: WKSHY 2013/01/04 2013/01/16 DESCRIPTION	QUALITY SYMBOLS	GENERAL TOLERANCES (UNLESS SPECIFIED)	DIMENSION STYLE	SCALE	DESIGN UNITS	THIRD ANGLE PROJECTION	
	∇=0 ∇=0 ∇=0	mm INCH 4 PLACES ± --- ± --- 3 PLACES ± --- ± --- 2 PLACES ± 0.10 ± --- 1 PLACE ± 0.3 ± --- 0 PLACE ± ±	MM ONLY	4:1	METRIC	DRAWN BY: D. MARCOUX DATE: 06-13-02 CHECKED BY: DGRIFITHS DATE: 06-13-02 APPROVED BY: FHOLUB DATE: 06-13-02	MX150 2X4 RECEPTACLE SEALED ASSEMBLY MAT SEAL molex
	ANGULAR ± 3 ° DRAFT WHERE APPLICABLE MUST REMAIN WITHIN DIMENSIONS	MATERIAL NO: SEE BOM	DOCUMENT NO: SD-33472-081	SHEET NO: 4 OF 9			
	THIS DRAWING CONTAINS INFORMATION THAT IS PROPRIETARY TO MOLEX INCORPORATED AND SHOULD NOT BE USED WITHOUT WRITTEN PERMISSION						

20 19 18 17 16 15 14 13 12 11 10 9 8 7 6 5 4 3 2 1

WIRE DRESS COVER



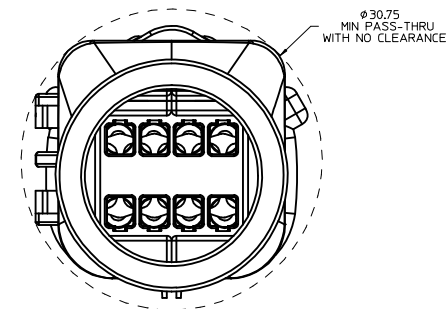
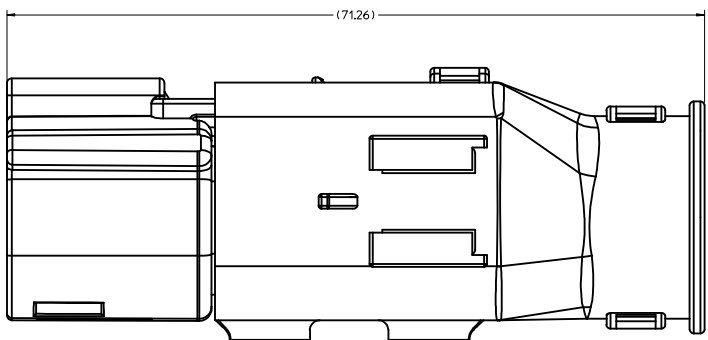
Partial X-X
SCALE 4:1

ENTER DESCRIPTION DEC NO: UAU2013-1018 DRAWN BY: CHYKD CHKD: APPR: WKSHY DATE: 2013/01/04 DESCRIPTION:	QUALITY SYMBOLS	GENERAL TOLERANCES (UNLESS SPECIFIED)	DIMENSION STYLE	SCALE	DESIGN UNITS	THIRD ANGLE PROJECTION	
	∇=0 ∇=0 ∇=0	4 PLACES ± 0.10 3 PLACES ± 0.15 2 PLACES ± 0.20 1 PLACE ± 0.30 0 PLACE ±	mm INCH ± ± ± ± ± ± ± ± ± ±	MM ONLY	4:1	METRIC	DRAWN BY: D. MARCOUX DATE: 06-13-02 CHECKED BY: D. GRIFFITHS DATE: 06-13-02 APPROVED BY: F. HOLUB DATE: 06-13-02
	ANGULAR ± 3 ° DRAFT WHERE APPLICABLE MUST REMAIN WITHIN DIMENSIONS		MATERIAL NO.	DOCUMENT NO.		SHEET NO.	
	SEE BOM SIZE D		MX150 2X4 RECEPTACLE SEALED ASSEMBLY MAT SEAL molex SD-33472-081		5 OF 9		

19 18 17 16 15 14 13 12 11 10 9 8 7 6 5 4 3 2 1

20 19 18 17 16 15 14 13 12 11 10 9 8 7 6 5 4 3 2 1

WIRE DRESS COVER CONFIGURATIONS



RECEPTACLE SEALED ASSEMBLY WITH RECEPTACLE WIRE DRESS COVER

ENTER DESCRIPTION EEC NO: UAU2013-1018 DRAWN BY: Y4 CHYK: APPR: WKSHY 2013/01/04 2013/01/16 DESCRIPTION	QUALITY SYMBOLS ▽=0 ▽=0 ▽=0		GENERAL TOLERANCES (UNLESS SPECIFIED) <table border="1"> <thead> <tr> <th></th> <th>mm</th> <th>INCH</th> </tr> </thead> <tbody> <tr> <td>4 PLACES</td> <td>± 0.10</td> <td>± 0.004</td> </tr> <tr> <td>3 PLACES</td> <td>± 0.15</td> <td>± 0.006</td> </tr> <tr> <td>2 PLACES</td> <td>± 0.20</td> <td>± 0.008</td> </tr> <tr> <td>1 PLACE</td> <td>± 0.30</td> <td>± 0.012</td> </tr> <tr> <td>0 PLACE</td> <td>± 0.50</td> <td>± 0.020</td> </tr> </tbody> </table>			mm	INCH	4 PLACES	± 0.10	± 0.004	3 PLACES	± 0.15	± 0.006	2 PLACES	± 0.20	± 0.008	1 PLACE	± 0.30	± 0.012	0 PLACE	± 0.50	± 0.020	DIMENSION STYLE MM ONLY		SCALE 4:1	DESIGN UNITS METRIC	THIRD ANGLE PROJECTION
		mm	INCH																								
	4 PLACES	± 0.10	± 0.004																								
	3 PLACES	± 0.15	± 0.006																								
2 PLACES	± 0.20	± 0.008																									
1 PLACE	± 0.30	± 0.012																									
0 PLACE	± 0.50	± 0.020																									
ANGULAR ± 3 ° DRAFT WHERE APPLICABLE MUST REMAIN WITHIN DIMENSIONS			DRAWN BY: D. MARCOUX DATE: 06-13-02		CHECKED BY: D. GRIFFITHS DATE: 06-13-02		APPROVED BY: F. HOLUB DATE: 06-13-02																				
MATERIAL NO. SEE BOM			TITLE MX150 2X4 RECEPTACLE SEALED ASSEMBLY MAT SEAL		DOCUMENT NO. SD-33472-081		SHEET NO. 6 OF 9																				
THIS DRAWING CONTAINS INFORMATION THAT IS PROPRIETARY TO MOLEX INCORPORATED AND SHOULD NOT BE USED WITHOUT WRITTEN PERMISSION																											

19 18 17 16 15 14 13 12 11 10 9 8 7 6 5 4 3 2 1

ASSEMBLY DESCRIPTION	ASSEMBLY PART NUMBER	A	B	C	D	D	D	A	GCO	GCP	CPA	1	2	3	4	5	6	7	8	STATUS	COMMENTS	34951-0810 WDC WITH RIBS	34951-0820 WDC WITHOUT RIBS
VOID KEY	33472-0840																						
KEY D, W/CPA, GREEN	33472-0839				D					GCP	CPA	1			4	5				NOT RECOMMENDED		OK TO TOOL	OK TO TOOL
KEY C, W/CPA, BROWN	33472-0838				C					GCP	CPA	1			4	5				NOT RECOMMENDED		OK TO TOOL	OK TO TOOL
KEY B, W/CPA, LIGHT GRAY	33472-0837		B							GCP	CPA	1			4	5						OK TO TOOL	OK TO TOOL
KEY A, W/CPA, BLACK	33472-0836		A							GCP	CPA	1			4	5						OK TO TOOL	OK TO TOOL
VOID KEY	33472-0835																						
KEY D, GREEN	33472-0834				D					GCP		1			4	5				NOT RECOMMENDED		OK TO TOOL	OK TO TOOL
KEY C, BROWN	33472-0833				C					GCP		1			4	5				NOT RECOMMENDED		OK TO TOOL	OK TO TOOL
KEY B, LIGHT GRAY	33472-0832		B							GCP		1			4	5						OK TO TOOL	OK TO TOOL
KEY A, BLACK	33472-0831		A							GCP		1			4	5						OK TO TOOL	OK TO TOOL
VOID KEY	33472-0830																						
KEY D, W/CPA, GREEN	33472-0829				D					GCP	CPA				4	5				NOT RECOMMENDED		OK TO TOOL	OK TO TOOL
KEY C, W/CPA, BROWN	33472-0828				C					GCP	CPA				4	5				NOT RECOMMENDED		OK TO TOOL	OK TO TOOL
KEY B, W/CPA, LIGHT GRAY	33472-0827		B							GCP	CPA				4	5						OK TO TOOL	OK TO TOOL
KEY A, W/CPA, BLACK	33472-0826		A							GCP	CPA				4	5						OK TO TOOL	OK TO TOOL
VOID KEY	33472-0825																						
KEY D, GREEN	33472-0824				D					GCP					4	5				NOT RECOMMENDED		OK TO TOOL	OK TO TOOL
KEY C, BROWN	33472-0823				C					GCP					4	5				NOT RECOMMENDED		OK TO TOOL	OK TO TOOL
KEY B, LIGHT GRAY	33472-0822		B							GCP					4	5						OK TO TOOL	OK TO TOOL
KEY A, BLACK	33472-0821		A							GCP					4	5						OK TO TOOL	OK TO TOOL
VOID KEY	33472-0820																						
KEY D, W/CPA, GREEN	33472-0819				D					GCP	CPA				4					NOT RECOMMENDED		OK TO TOOL	OK TO TOOL
KEY C, W/CPA, BROWN	33472-0818				C					GCP	CPA				4					NOT RECOMMENDED		OK TO TOOL	OK TO TOOL
KEY B, W/CPA, LIGHT GRAY	33472-0817		B							GCP	CPA				4							OK TO TOOL	OK TO TOOL
KEY A, W/CPA, BLACK	33472-0816		A							GCP	CPA				4							OK TO TOOL	OK TO TOOL
VOID KEY	33472-0815																						
KEY D, GREEN	33472-0814				D					GCP					4					NOT RECOMMENDED		OK TO TOOL	OK TO TOOL
KEY C, BROWN	33472-0813				C					GCP					4					NOT RECOMMENDED		OK TO TOOL	OK TO TOOL
KEY B, LIGHT GRAY	33472-0812		B							GCP					4							OK TO TOOL	OK TO TOOL
KEY A, BLACK	33472-0811		A							GCP					4							OK TO TOOL	OK TO TOOL
VOID KEY	33472-0810																						
KEY D, W/CPA, GREEN	33472-0809				D					GCO	CPA									NOT RECOMMENDED USE.PLEASE USE 33472-0882		OK TO TOOL	OK TO TOOL
KEY C, W/CPA, BROWN	33472-0808				C					GCO	CPA									NOT RECOMMENDED USE.PLEASE USE 33472-0881		OK TO TOOL	OK TO TOOL
KEY B, W/CPA, LIGHT GRAY	33472-0807		B							GCO	CPA											OK TO TOOL	OK TO TOOL
KEY A, W/CPA, BLACK	33472-0806		A							GCO	CPA											OK TO TOOL	OK TO TOOL
KEY D, BLACK	33472-0805				D					GCO												OK TO TOOL	OK TO TOOL
KEY D, GREEN	33472-0804				D					GCO										NOT RECOMMENDED USE.PLEASE USE 33472-0880		OK TO TOOL	OK TO TOOL
KEY C, BROWN	33472-0803				C					GCO										NOT RECOMMENDED USE.PLEASE USE 33472-0879		OK TO TOOL	OK TO TOOL
KEY B, LIGHT GRAY	33472-0802		B							GCO												OK TO TOOL	OK TO TOOL
KEY A, BLACK	33472-0801		A							GCO												OK TO TOOL	OK TO TOOL

DESCRIPTION	COLOR	MATERIAL
MAT SEAL	LIGHT BLUE	INHERENTLY LUBRICATED SILICONE
RING SEAL	GREEN	INHERENTLY LUBRICATED SILICONE
PLR	NATURAL	SPS/NYLON GF20
CPA	RED	PBT GF20
GROMMET CAP (PLUGGED)	BLACK	SPS/NYLON GF20
GROMMET CAP (OPEN)	BLACK	SPS/NYLON GF20
HOUSING KEYING OPTION A	YELLOW	SPS/NYLON GF20
HOUSING KEYING OPTION D	STONE GRAY	SPS/NYLON GF20
HOUSING KEYING OPTION C	DARK GRAY	SPS/NYLON GF20
HOUSING KEYING OPTION D	BLACK	SPS/NYLON GF20
HOUSING KEYING OPTION D	GREEN	SPS/NYLON GF20
HOUSING KEYING OPTION C	BROWN	SPS/NYLON GF20
HOUSING KEYING OPTION B	LIGHT GRAY	SPS/NYLON GF20
HOUSING KEYING OPTION A	BLACK	SPS/NYLON GF20

ABBREVIATION	COMPONENT
A	HOUSING KEY A
B	HOUSING KEY B
C	HOUSING KEY C
D	HOUSING KEY D
GCO	GROMMET CAP, OPEN
GCP	GROMMET CAP, PLUGGED
PLR	PRIMARY LOCK REINFORCEMENT
CPA	CONNECTOR POSITION ASSURANCE
WDC	WIRE DRESS COVER

ENTER DESCRIPTION ELEC NO: UAU2013-1018 DRAWN BY: CHKO APPR: IKOSHY 2013/01/16 2013/01/16 Y4	QUALITY SYMBOLS ∇=0 ∇=0 ∇=0	GENERAL TOLERANCES (UNLESS SPECIFIED) DIMENSION STYLE MM ONLY SCALE DESIGN UNITS METRIC THIRD ANGLE PROJECTION	DRAWN BY: D. MARCOUX DATE: 06-13-02 CHECKED BY: DGRIFITHS DATE: 06-13-02 APPROVED BY: FHOLUB DATE: 06-13-02	TITLE MX150 2X4 RECEPTACLE SEALED ASSEMBLY MAT SEAL molex MATERIAL NO. SEE BOM DOCUMENT NO. SD-33472-081	SHEET NO. 7 OF 9
	ANGULAR ± 3 ° DRAFT WHERE APPLICABLE MUST REMAIN WITHIN DIMENSIONS		THIS DRAWING CONTAINS INFORMATION THAT IS PROPRIETARY TO MOLEX INCORPORATED AND SHOULD NOT BE USED WITHOUT WRITTEN PERMISSION		

ASSEMBLY DESCRIPTION	PART NUMBER	A	B	C	D	D	D	D	D	A	GCO	GCP	CPA	1	2	3	4	5	6	7	8	STATUS	COMMENTS	34951-0810 WDC WITH RIBS	34951-0820 WDC WITHOUT RIBS			
KEY D, STONE GRAY	33472-0880										D	GCO											OK TO TOOL	OK TO TOOL				
KEY C, DARK GRAY	33472-0879										C	GCO											OK TO TOOL	OK TO TOOL				
KEY A, BLACK	33472-0878	A										GCP				3		5	6				OK TO TOOL	OK TO TOOL				
KEY A, W/CPA, BLACK	33472-0877	A										GCP	CPA										OK TO TOOL	OK TO TOOL				
KEY A, BLACK	33472-0876	A										GCP		1	2	3	4	5	6	7	8		OK TO TOOL	OK TO TOOL				
KEY A, BLACK	33472-0875	A										GCP			2	3							OK TO TOOL	OK TO TOOL				
KEY A, BLACK	33472-0874	A										GCP			2	3					6	7	8	OK TO TOOL	OK TO TOOL			
KEY A, BLACK	33472-0873	A										GCP			2	3							7	8	OK TO TOOL	OK TO TOOL		
KEY A, BLACK	33472-0872	A										GCP					4	5	6	7					OK TO TOOL	OK TO TOOL		
KEY A, BLACK	33472-0871	A										GCP		1	2	3	4	5	6	7					OK TO TOOL	OK TO TOOL		
KEY A, BLACK	33472-0870	A										GCP		1		3		5	6	7	8					OK TO TOOL	OK TO TOOL	
KEY A, BLACK	33472-0869	A										GCP							6							OK TO TOOL	OK TO TOOL	
KEY A, BLACK	33472-0868	A										GCP						5	6		8					OK TO TOOL	OK TO TOOL	
KEY A, BLACK	33472-0867	A										GCP		1		3		5	6							OK TO TOOL	OK TO TOOL	
KEY A, BLACK	33472-0866	A										GCP			2	3		5	6		8					OK TO TOOL	OK TO TOOL	
KEY A, BLACK	33472-0865	A										GCP		1					6							OK TO TOOL	OK TO TOOL	
KEY A, BLACK	33472-0864	A										GCP		1		3		5								OK TO TOOL	OK TO TOOL	
KEY A, BLACK	33472-0863	A										GCP			2	3		5			8					OK TO TOOL	OK TO TOOL	
KEY A, BLACK	33472-0862	A										GCP		1												OK TO TOOL	OK TO TOOL	
KEY A, BLACK	33472-0861	A										GCP														OK TO TOOL	OK TO TOOL	
KEY D, BLACK	33472-0860										D	GCP					4									OK TO TOOL	OK TO TOOL	
KEY A, BLACK	33472-0859	A										GCP		1	2	3				6	7	8				OK TO TOOL	OK TO TOOL	
KEY A, W/CPA, BLACK	33472-0858	A										GCP	CPA	1	2	3		5	6	7						OK TO TOOL	OK TO TOOL	
KEY A, W/CPA, BLACK	33472-0857	A										GCP	CPA	1	2			5	6	7						OK TO TOOL	OK TO TOOL	
KEY A, W/CPA, BLACK	33472-0856	A										GCP	CPA		2				6	7						OK TO TOOL	OK TO TOOL	
KEY D, BLACK	33472-0855										D	GCP		1	2	3	4	5	6	7	8					OK TO TOOL	OK TO TOOL	
KEY D, GREEN	33472-0854										D	GCP		1	2	3	4	5	6	7	8	NOT RECOMMENDED				OK TO TOOL	OK TO TOOL	
KEY C, BROWN	33472-0853										C	GCP		1	2	3	4	5	6	7	8	NOT RECOMMENDED				OK TO TOOL	OK TO TOOL	
KEY B, LIGHT GRAY	33472-0852										B	GCP		1	2	3	4	5	6	7	8					OK TO TOOL	OK TO TOOL	
KEY A, BLACK	33472-0851	A										GCP		1	2	3	4	5	6	7	8					OK TO TOOL	OK TO TOOL	
VOID KEY	33472-0850																											
KEY D, W/CPA, GREEN	33472-0849										D	GCP	CPA	1			4	5			8	NOT RECOMMENDED				OK TO TOOL	OK TO TOOL	
KEY C, W/CPA, BROWN	33472-0848										C	GCP	CPA	1			4	5			8	NOT RECOMMENDED				OK TO TOOL	OK TO TOOL	
KEY B, W/CPA, LIGHT GRAY	33472-0847										B	GCP	CPA	1			4	5			8					OK TO TOOL	OK TO TOOL	
KEY A, W/CPA, BLACK	33472-0846	A										GCP	CPA	1			4	5			8					OK TO TOOL	OK TO TOOL	
VOID KEY	33472-0845																											
KEY D, GREEN	33472-0844										D	GCP		1			4	5			8	NOT RECOMMENDED				OK TO TOOL	OK TO TOOL	
KEY C, BROWN	33472-0843										C	GCP		1			4	5			8	NOT RECOMMENDED				OK TO TOOL	OK TO TOOL	
KEY B, LIGHT GRAY	33472-0842										B	GCP		1			4	5			8					OK TO TOOL	OK TO TOOL	
KEY A, BLACK	33472-0841	A										GCP		1			4	5			8					OK TO TOOL	OK TO TOOL	

DESCRIPTION	COLOR	MATERIAL
MAT SEAL	LIGHT BLUE	INHERENTLY LUBRICATED SILICONE
RING SEAL	GREEN	INHERENTLY LUBRICATED SILICONE
PLR	NATURAL	SPS/NYLON GF20
CPA	RED	PBT GF20
GROMMET CAP (PLUGGED)	BLACK	SPS/NYLON GF20
GROMMET CAP (OPEN)	BLACK	SPS/NYLON GF20
HOUSING KEYING OPTION A	YELLOW	SPS/NYLON GF20
HOUSING KEYING OPTION D	STONE GRAY	SPS/NYLON GF20
HOUSING KEYING OPTION C	DARK GRAY	SPS/NYLON GF20
HOUSING KEYING OPTION D	BLACK	SPS/NYLON GF20
HOUSING KEYING OPTION D	GREEN	SPS/NYLON GF20
HOUSING KEYING OPTION C	BROWN	SPS/NYLON GF20
HOUSING KEYING OPTION B	LIGHT GRAY	SPS/NYLON GF20
HOUSING KEYING OPTION A	BLACK	SPS/NYLON GF20

ABBREVIATION	COMPONENT
A	HOUSING KEY A
B	HOUSING KEY B
C	HOUSING KEY C
D	HOUSING KEY D
GCO	GROMMET CAP, OPEN
GCP	GROMMET CAP, PLUGGED
PLR	PRIMARY LOCK REINFORCEMENT
CPA	CONNECTOR POSITION ASSURANCE
WDC	WIRE DRESS COVER

BOM/APPLICABLE COMPONENTS TABLE

ENTER DESCRIPTION ELEC NO. UAU2013-1018 DRAWN BY: 2013/01/04 CHKD: 2013/01/16 APPR: WJSHY REV: 4	QUALITY SYMBOLS ∇=0 ∇=0 ∇=0	GENERAL TOLERANCES (UNLESS SPECIFIED) mm INCH 4 PLACES ±.000 ±.000 3 PLACES ±.010 ±.000 2 PLACES ±.030 ±.000 1 PLACE ±.075 ±.000 0 PLACE ±.150 ±.000	DIMENSION STYLE MM ONLY	SCALE DESIGN UNITS METRIC	THIRD ANGLE PROJECTION	
	DRAWN BY: D. MARCOUX DATE: 06-13-02	CHECKED BY: D. GRIFFITHS DATE: 06-13-02	APPROVED BY: FHOLUB DATE: 06-13-02	MATERIAL NO. SEE BOM	DOCUMENT NO. SD-33472-081	SHEET NO. 8 OF 9
	TITLE MX150 2X4 RECEPTACLE SEALED ASSEMBLY MAT SEAL					
	THIS DRAWING CONTAINS INFORMATION THAT IS PROPRIETARY TO MOLEX INCORPORATED AND SHOULD NOT BE USED WITHOUT WRITTEN PERMISSION					

ASSEMBLY DESCRIPTION	ASSEMBLY PART NUMBER	A	B	C	D	D	C	D	C	A	D	A	GCO	GCP	CPA	1	2	3	4	5	6	7	8	STATUS	COMMENTS	34951-0810 WDC WITH RIBS	34951-0820 WDC WITHOUT RIBS
KEY B, LIGHT GRAY	33472-0897		B											GCP											OK TO TOOL	OK TO TOOL	
KEY A, BLACK	33472-0896	A												GCP		1	2	3	4						OK TO TOOL	OK TO TOOL	
KEY A, BLACK	33472-0895	A												GCP		1	2								OK TO TOOL	OK TO TOOL	
KEY A, W/CPA, BLACK	33472-0894	A												GCP	CPA	1	2	3				6	7	8	OK TO TOOL	OK TO TOOL	
KEY A, W/CPA, BLACK	33472-0893	A												GCP	CPA									6	OK TO TOOL	OK TO TOOL	
KEY A, YELLOW	33472-0892											A	GCO												OK TO TOOL	OK TO TOOL	
KEY A, W/CPA, YELLOW	33472-0891											A	GCO	CPA											TOOLED BUT NOT VALIDATED	OK TO TOOL	
KEY A, W/CPA, YELLOW	33472-0890											A	GCP	CPA		2	3								TOOLED BUT NOT VALIDATED	OK TO TOOL	
KEY A, BLACK	33472-0889	A												GCP		1									OK TO TOOL	OK TO TOOL	
KEY B, LIGHT GRAY	33472-0888		B											GCP		1									OK TO TOOL	OK TO TOOL	
KEY B, W/CPA, LIGHT GRAY	33472-0887		B											GCP	CPA										OK TO TOOL	OK TO TOOL	
KEY A, BLACK	33472-0886	A												GCP				3							OK TO TOOL	OK TO TOOL	
KEY A, BLACK	33472-0885	A												GCP			2	3	4	5	6				OK TO TOOL	OK TO TOOL	
KEY A, BLACK	33472-0884	A												GCP				3							OK TO TOOL	OK TO TOOL	
KEY A, BLACK	33472-0883	A												GCP			2	3	4	5	6	7	8		OK TO TOOL	OK TO TOOL	
KEY D, W/CPA, STONE GRAY	33472-0882				D								GCO	CPA											OK TO TOOL	OK TO TOOL	
KEY C, W/CPA, DARK GRAY	33472-0881				D								GCO	CPA											OK TO TOOL	OK TO TOOL	
ASSEMBLY DESCRIPTION	ASSEMBLY PART NUMBER	A	B	C	D	D	C	D	C	A	D	A	GCO	GCP	CPA	1	2	3	4	5	6	7	8				

BLOCKED TERMINAL
 CAVITY WITH A NUMBER INDICATES BLOCKED TERMINAL POSITION
 CAVITY WITHOUT A NUMBER INDICATES OPEN TERMINAL POSITION

DESCRIPTION	COLOR	MATERIAL
MAT SEAL	LIGHT BLUE	INHERENTLY LUBRICATED SILICONE
RING SEAL	GREEN	INHERENTLY LUBRICATED SILICONE
PLR	NATURAL	SPS/NYLON GF20
CPA	RED	PBT GF20
GROMMET CAP (PLUGGED)	BLACK	SPS/NYLON GF20
GROMMET CAP (OPEN)	BLACK	SPS/NYLON GF20
HOUSING KEYING OPTION A	YELLOW	SPS/NYLON GF20
HOUSING KEYING OPTION D	STONE GRAY	SPS/NYLON GF20
HOUSING KEYING OPTION C	DARK GRAY	SPS/NYLON GF20
HOUSING KEYING OPTION D	BLACK	SPS/NYLON GF20
HOUSING KEYING OPTION D	GREEN	SPS/NYLON GF20
HOUSING KEYING OPTION C	BROWN	SPS/NYLON GF20
HOUSING KEYING OPTION B	LIGHT GRAY	SPS/NYLON GF20
HOUSING KEYING OPTION A	BLACK	SPS/NYLON GF20

BOM/APPLICABLE COMPONENTS TABLE

ABBREVIATION	COMPONENT
A	HOUSING KEY A
B	HOUSING KEY B
C	HOUSING KEY C
D	HOUSING KEY D
GCO	GROMMET CAP, OPEN
GCP	GROMMET CAP, PLUGGED
PLR	PRIMARY LOCK REINFORCEMENT
CPA	CONNECTOR POSITION ASSURANCE
WDC	WIRE DRESS COVER

ENTER DESCRIPTION EEC NO. UAU2013-1018 DRAWN BY CHYK APPR: WJOSH 2013/01/16	QUALITY SYMBOLS ∇=0 ∇=0 ∇=0	GENERAL TOLERANCES (UNLESS SPECIFIED) 4 PLACES ± 0.10 mm 3 PLACES ± 0.15 mm 2 PLACES ± 0.25 mm 1 PLACE ± 0.50 mm 0 PLACE ± 0.75 mm	DIMENSION STYLE MM ONLY	SCALE DESIGN UNITS METRIC	THIRD ANGLE PROJECTION
	MATERIAL NO. SEE BOM	DATE 06-13-02	DATE 06-13-02	DATE 06-13-02	TITLE MX150 2X4 RECEPTACLE SEALED ASSEMBLY MAT SEAL
	DRAFT WHERE APPLICABLE MUST REMAIN WITHIN DIMENSIONS	ANGULAR ± 3°	APPROVED BY FHOLUB	DOCUMENT NO. SD-33472-081	SHEET NO. 9 OF 9
	THIS DRAWING CONTAINS INFORMATION THAT IS PROPRIETARY TO MOLEX INCORPORATED AND SHOULD NOT BE USED WITHOUT WRITTEN PERMISSION				