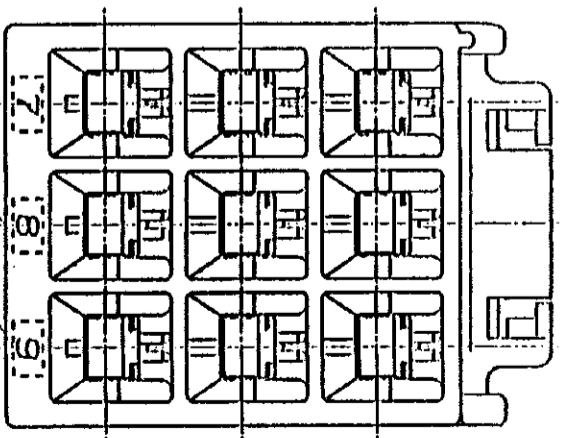
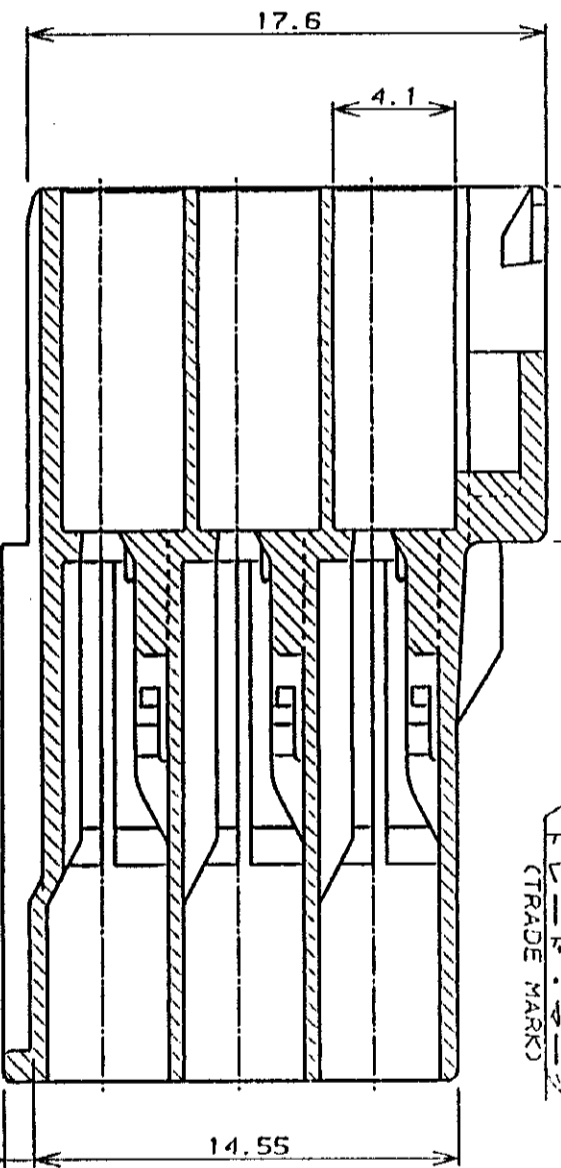
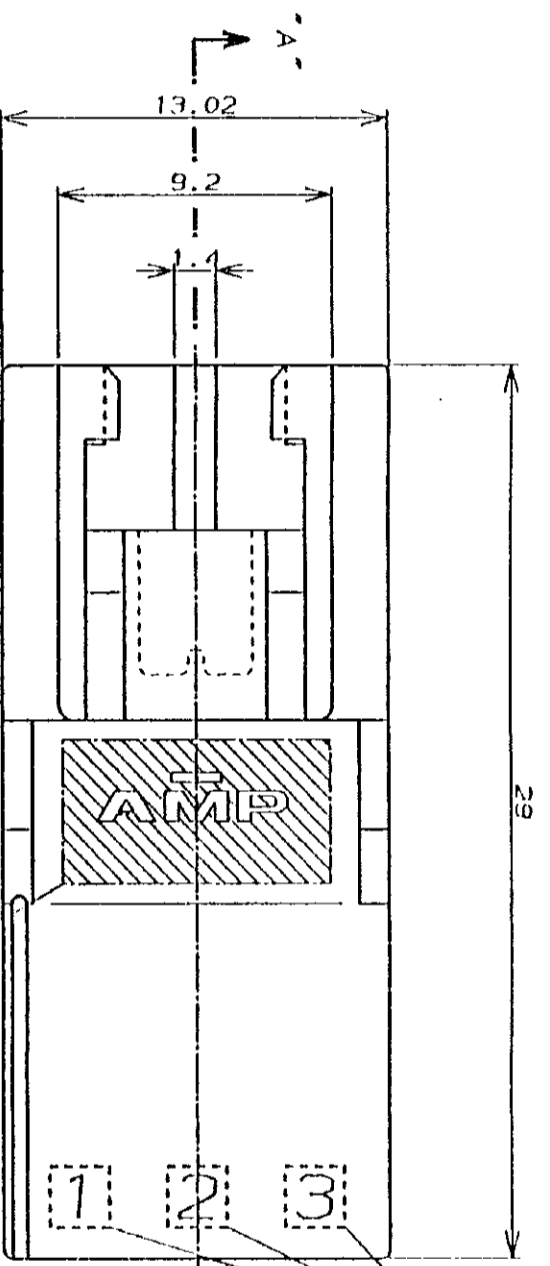
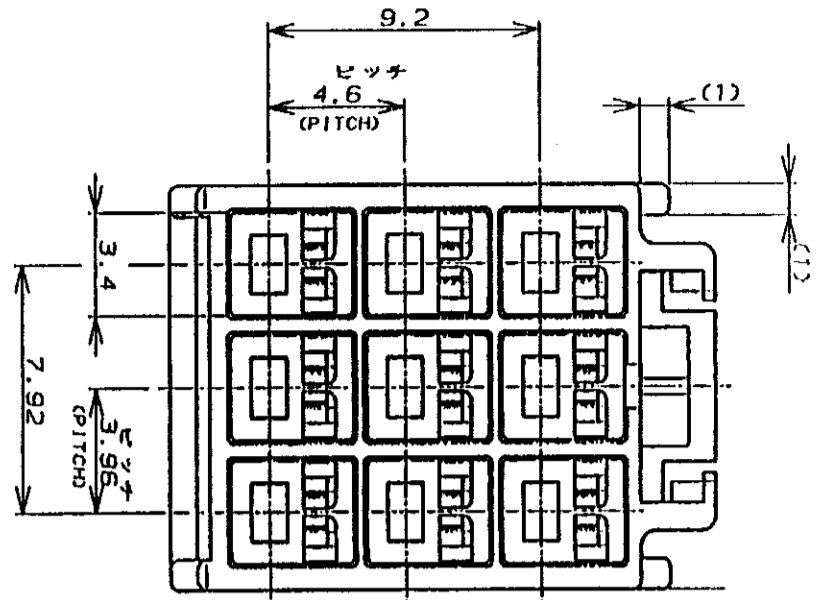


単位：mm DIMENSIONS IN MM. DO NOT SCALE PRINT



NOTES:

1. PRODUCT SPEC. : 108-5302
2. APPLICABLE CONTACT P/N
TAB CONTACT: 175150-CIC-20-16AWG)
 175149-CIC-26-22AWG)
3. MATING CONN. P/N
PLUG HSG: 176276-F1
REC CONTACT: 175152-CIC-20-16AWG)
 175151-CIC-26-22AWG)
4. INSTRUCTION SHEET : IS-503J

1. 適用製品規格 : 108-5302
2. 適用コネクタ型番
プラグ・コネクタ : 175150-CIC-20-16AWG)
 175149-CIC-26-22AWG)
3. 嵌合相手製品型番
プラグ・ハウジング : 176276-F1
リセ・コネクタ : 175152-CIC-20-16AWG)
 175151-CIC-26-22AWG)
4. 取扱説明書 : IS-503J

REV	REV	REV	REV	REV	REV
0	A	B			
作成	改訂	改訂			
12/15/81	5/12/85	7/12/85			
M.S.	M.S.	M.S.			
H.S.Y.F.	Y.N.M.S.	Y.N.M.S.			
1981	1985	1985			
Y.	Y.	Y.			

⑩ 19 82 BY AMP (Japan) LTD.

AMP UNIVERSAL POWER CONN. 3.95mm PITCH CAP HOUSING 9 Pos (TYP. ROM)

AMP UNIVERSAL POWER CONN. 3.95mm PITCH CAP HOUSING 9 Pos (TYP. ROM)

AMP

Tokyo, Japan

SIZE LOC 寄号 (No.)

A3 J C-176287

REV. B SHEET 1 OF 1

色 (COLOR)	位置 (POS.)	標準値 (STAND. VAL.)	型番 (P/N)
黒 (BLACK)	9		176287-9
青 (BLUE)	↑		-6
黄 (YELLOW)	↑		-4
赤 (RED)	↓		-2
自然色 (NATURAL)	9		176287-1

色調 (COLOR)	位置 (Pos.)	標準値 (STAND. VAL.)	型番 (P/N)
黒 (BLACK)	9		176287-9
青 (BLUE)	↑		-6
黄 (YELLOW)	↑		-4
赤 (RED)	↓		-2
自然色 (NATURAL)	9		176287-1