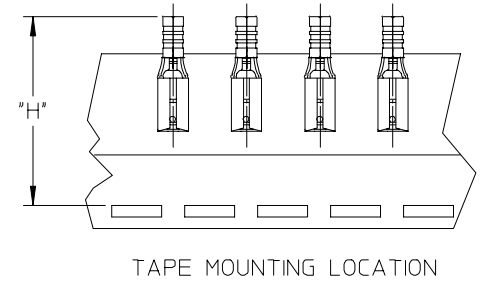
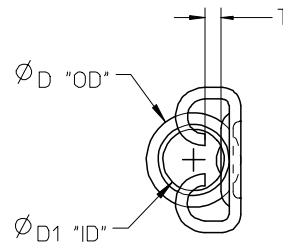
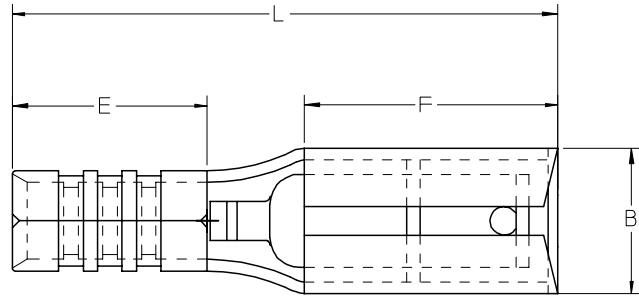


MATERIAL NUMBER	ENGINEERING NUMBER	WIRE RANGE AWG	TAPED MATERIAL NUMBER	TAPED ENGINEERING NUMBER	T MAX	B MAX	F MIN	L MAX	E MIN	D1 MIN	D MAX	H NOMINAL
192030373	192030373	16-14	192030467	192030373T	.030/.75	.239/6.06	.252/6.40	.587/14.92	.173/4.40	.083/2.10	.138/3.50	1.184/30.07
192030390	192030390	16-14	192030469	192030390T	.030/.75	.302/7.66	.307/7.80	.666/16.92	.173/4.40	.083/2.10	.138/3.50	1.184/30.07
192030379	192030379	12-10	192030468	192030379T	.030/.75	.302/7.66	.307/7.80	.706/17.92	.213/5.40	.130/3.30	.185/4.70	1.235/31.37



- NOTE(S):
1. MATERIAL: STEEL .016/0.40 THICK REF.
  2. FINISH: NICKEL PLATED
  3. PART IS ROHS COMPLIANT.
  4. AMBIENT OPERATING TEMPERATURE UP TO 900 °F (483 °C).

ADDED OPERATING TEMP EC NO: ETC2007-0297 DRW: JMACNEIL 2007/03/13 CHKD: JMACNEIL 2007/03/13 APPR: JMACNEIL 2007/03/14	QUALITY SYMBOLS ▽=0 ▽=0	GENERAL TOLERANCES (UNLESS SPECIFIED)		DIMENSION STYLE IN/MM		SCALE 1:1	DESIGN UNITS INCH	THIRD ANGLE PROJECTION	
			mm	INCH	DRAWN BY ASAYDEH	DATE 05/12/02	TITLE KRIPTITE QUICK DISCONNECT, STEEL, 900 DEG F (483 DEG C)		
		4 PLACES ± --- ± ---	3 PLACES ± --- ± ---	CHECKED BY R DEROSS	DATE 05/12/02				
		2 PLACES ± --- ± ---	1 PLACE ± --- ± ---	APPROVED BY R DEROSS	DATE 05/12/02	MOLEX INCORPORATED			
		ANGULAR ± ---°	DRAFT WHERE APPLICABLE MUST REMAIN WITHIN DIMENSIONS		MATERIAL NO. SEE CHART	DOCUMENT NO. SD-19203-025	SHEET NO. 1 OF 1		
					SIZE B	THIS DRAWING CONTAINS INFORMATION THAT IS PROPRIETARY TO MOLEX INCORPORATED AND SHOULD NOT BE USED WITHOUT WRITTEN PERMISSION			