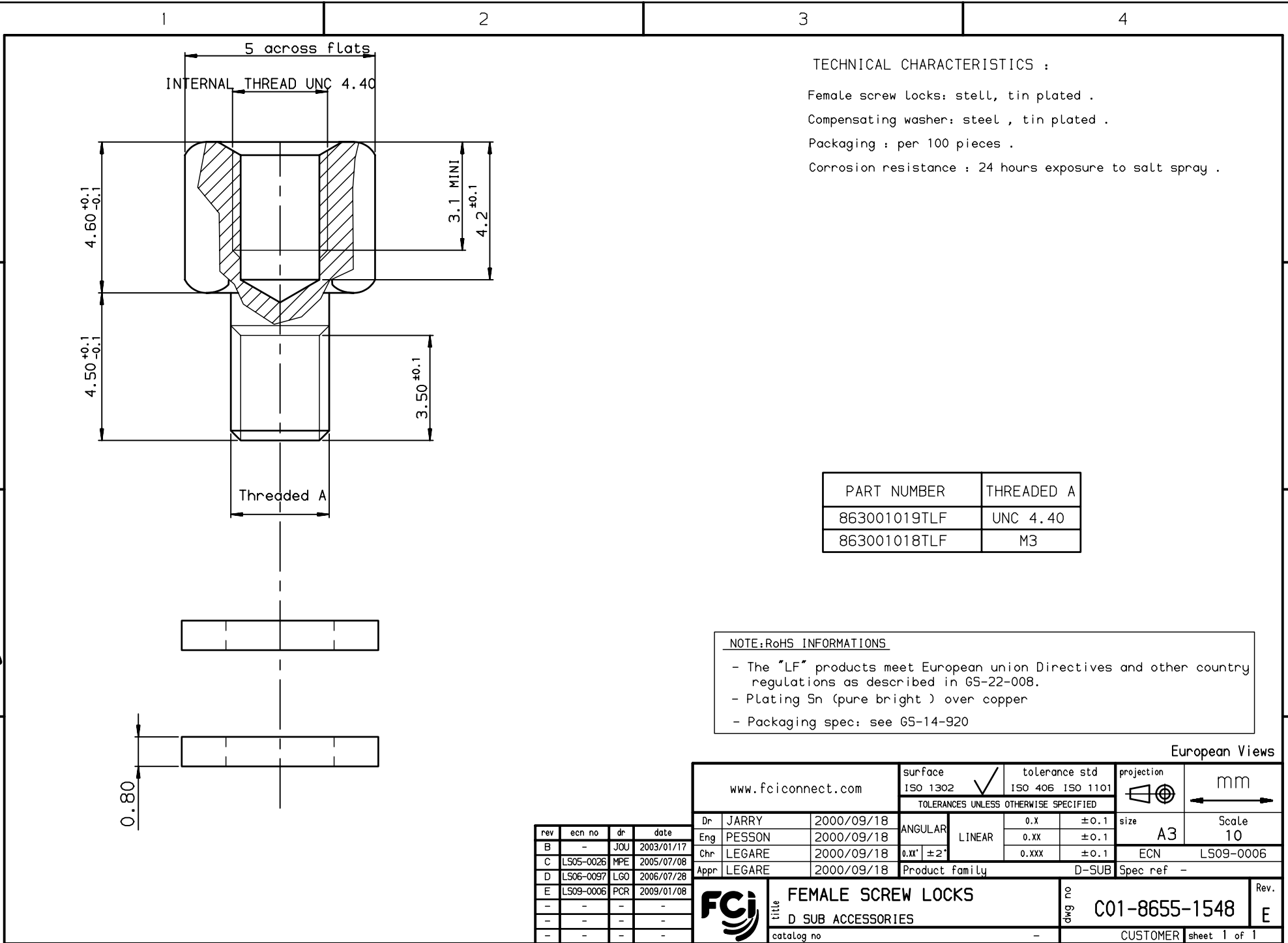


Copyright FCI, FCI



TECHNICAL CHARACTERISTICS :

Female screw locks: steel, tin plated .

Compensating washer: steel , tin plated .

Packaging : per 100 pieces .

Corrosion resistance : 24 hours exposure to salt spray .

NOTE:RoHS INFORMATIONS

- The "LF" products meet European union Directives and other country regulations as described in 65-22-008.
- Plating Sn (pure bright) over copper
- Packaging spec: see 65-14-920

European Views

www.fciconnect.com		surface ISO 1302 ✓	tolerance std ISO 406 ISO 1101	projection ⊕	mm
TOLERANCES UNLESS OTHERWISE SPECIFIED					
Dr	JARRY	2000/09/18	ANGULAR	0.X ±0.1	size A3
Eng	PESSON	2000/09/18	LINEAR	0.XX ±0.1	Scale 10
Chr	LEGARE	2000/09/18	0.XX' ±2'	0.XXX ±0.1	ECN LS09-0006
Appr	LEGARE	2000/09/18	Product family	D-SUB	Spec ref -
Title			FEMALE SCREW LOCKS		dwg no
D SUB ACCESSORIES			C01-8655-1548		Rev. E
catalog no			CUSTOMER		sheet 1 of 1

rev	ecn no	dr	date
B	-	JOU	2003/01/17
C	LS05-0026	MPE	2005/07/08
D	LS06-0097	LGO	2006/07/28
E	LS09-0006	PCR	2009/01/08
-	-	-	-
-	-	-	-
-	-	-	-