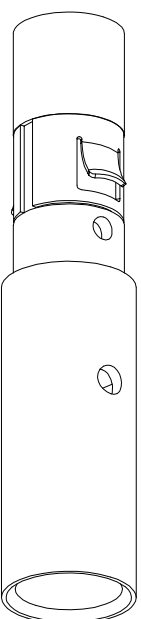
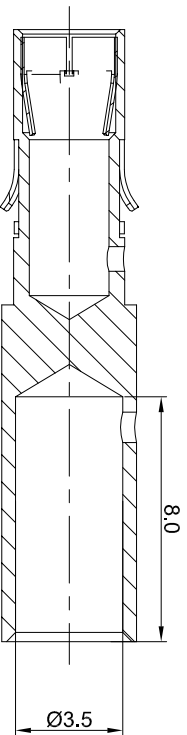
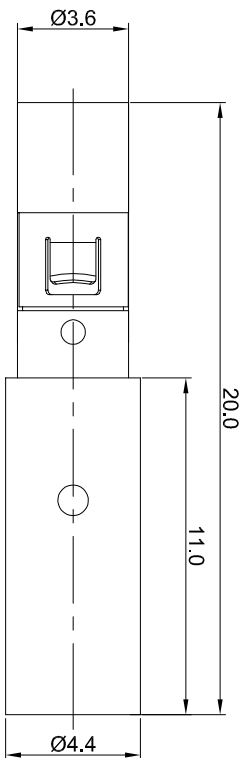


REVISIONS				
REV	ECO	DESCRIPTION	DATE	BY APPR
A1	-	FIRST RELEASE	May/27/2017	Tom TOMMY
A2	-	Modify the current rating	Jul,10,2017	White TOMMY



P/N	CONTACT PLATING(MATING AREA)
MS10B23T	TIN PLATING OVER NICKEL.
MS10B23S	SILVER PLATING OVER NICKEL.
MS10B23F	GOLD FLASH PLATING OVER NICKEL.
MS10B23G5	5µ" GOLD PLATING OVER NICKEL.
MS10B23G10	10µ" GOLD PLATING OVER NICKEL.
MS10B23G15	15µ" GOLD PLATING OVER NICKEL.
MS10B23G30	30µ" GOLD PLATING OVER NICKEL.

- NOTES : ( UNLESS OTHERWISE SPECIFIED )
- MATERIAL :
    - CONTACT BODY : COPPER ALLOY.
    - POSITIONING CLIP : COPPER ALLOY.
  - SPECIFICATIONS :
    - CURRENT RATING : 35A(MAX).
    - TERMINATION TYPE : CRIMPING.
  - SUITABLE SOCKET : MP10B23xx.
  - ROHS COMPLIANT.
  - ALL DIMENSIONS ARE FOR REFERENCE USE ONLY.

QUANTITY	PART NUMBER	DESCRIPTION	ITEM
<b>MATERIALS LIST</b>			
UNLESS OTHERWISE SPECIFIED			
1) All dimensions are in millimeters.			
2) Tolerances are as follows:			
1 Pt. DEC 40.30 Fractions 1/16"			
3 Pt. DEC 40.08 Angles 1°			
3) Note reference =			
MATERIAL SPECIFICATIONS:		CUSTOMER:	
PROCESS SPECIFICATIONS:		THIS DRAWING IS SUPPLIED FOR INFORMATION ONLY. IT IS NOT TO BE USED FOR PRODUCTION. THE MANUFACTURER ASSUMES NO RESPONSIBILITY FOR REPRODUCTION ERRORS. ALL DIMENSIONS ARE TO UNLESS OTHERWISE SPECIFIED.	
NEXT ASST:		SCALE: NONE	
SIGNATURES		DATE	
DRAWN: White		Jul,10,2017	
CHECKED:			
ENGINEER:			
APPROVAL:			
ECONOMATE SOCKET CONTACT MACHINE,FEMALE,CONTACT 2.5mm		Sine Systems - www.amphenol-sine.com 44724 Morley Drive Clinton Township, MI 48036	
SIZE	TYPE	DWG NO.	REVISION
B	C-	MS10B23xx	A2
SHEET	1	OF	1

TITLE: ECO-MATE MACHINE FEMALE CONTACT 2.5mm

DWG NO.: MS10B23xx

REV: A2

SH: 1

OF: 1