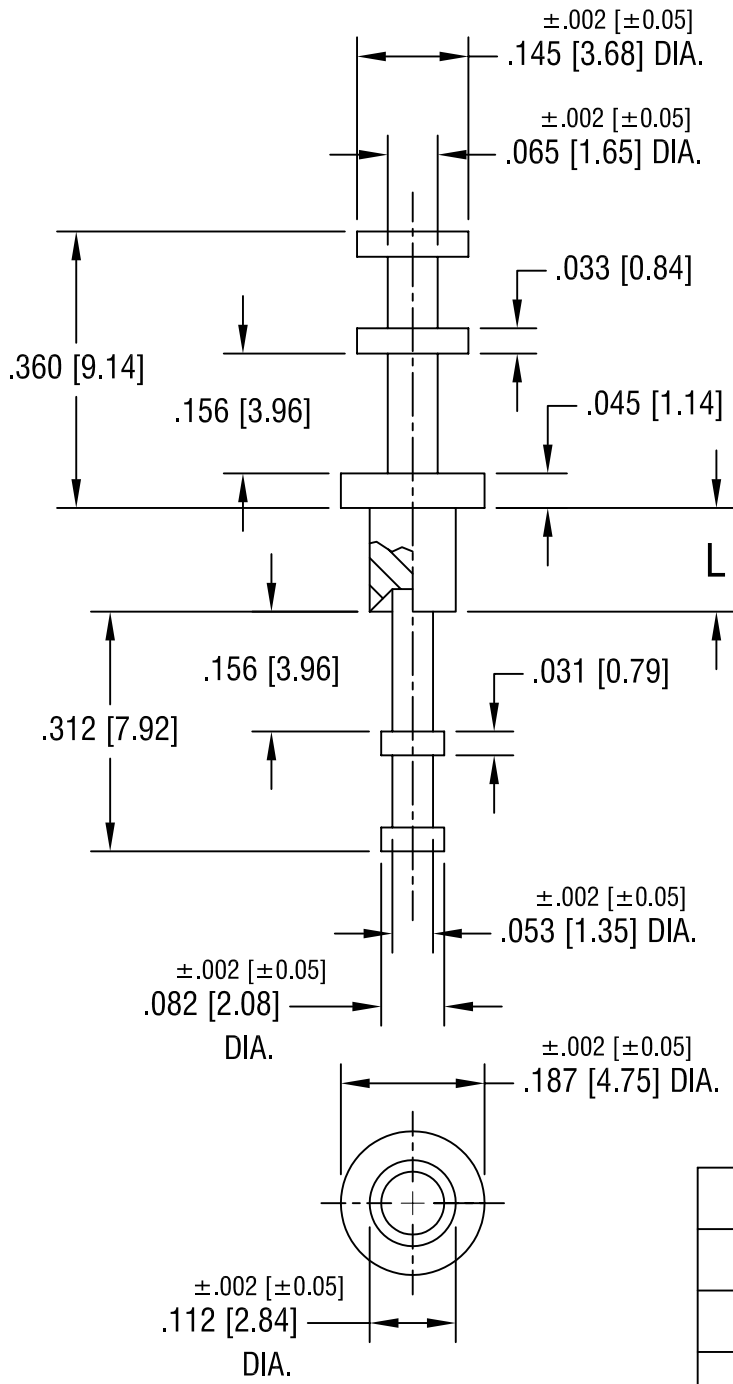


THIS DOCUMENT IS THE PROPERTY OF  
KEYSTONE ELECTRONICS CORP. AND  
SHALL NOT BE REPRODUCED, DISTRIBUTED  
OR USED AS A BASIS FOR MANUFACTURE  
WITHOUT PRIOR WRITTEN PERMISSION  
FROM KEYSTONE ELECTRONICS CORP.



| PART NO. | 'L' DIM.    |
|----------|-------------|
| 1545-2   | .105 [2.67] |
| 1545-3   | .135 [3.43] |
| 1545-4   | .165 [4.19] |

|                                   |        |          |              |
|-----------------------------------|--------|----------|--------------|
| <b>KEYSTONE ELECTRONICS CORP.</b> |        |          |              |
| ASTORIA, N.Y. 11105-2017          |        |          |              |
| PART NAME                         |        |          |              |
| TERMINAL                          |        |          |              |
| MATERIAL                          |        |          |              |
| BRASS                             |        |          |              |
| FINISH                            |        | DRN BY   | DATE         |
| TIN PLATE                         |        | BOONE    | 10.24.96     |
|                                   |        | APPD     | SCALE        |
|                                   |        | LN       | 4X           |
| TOLERANCES                        | INCH   | [MM]     | CODE         |
| DECIMAL                           | ± .005 | [± 0.15] | C/M          |
| ANGULAR                           | ± 1°   |          | DWG NO.      |
| UNLESS OTHERWISE SPECIFIED        |        |          | <b>1545-</b> |

| DATE | DESCRIPTION | REV. |
|------|-------------|------|
|      |             |      |