

ATLANTIC VERSION TERMINATOR INTERFACE ADAPTER	PART NUMBER	REVISION	DESCRIPTION	FEED TYPE	APPLICATOR STYLE CONVERSION CHART							
					CONVERT TO	PART NUMBERS REQUIRED						
	2151501-2	H	FINE CRIMP HEIGHT ADJUST	PNEUMATIC	-	-	1338683-8	5-18022-5	-	-	-	
	2151501-5	H	FINE CRIMP HEIGHT ADJUST	SERVO LATCH PLATE $\Delta 4$	SERVO LATCH PLATE	2119951-1	-	8-2151501-5	1901094-3	-	-	2168400-6 (QUANTITY 2)
					SMART APPLICATOR	2161326-1	-	8-2151501-4	-	-	-	
	2151501-6	H	NON-CRIMP HEIGHT ADJUST	SERVO LATCH PLATE $\Delta 4$	PNEUMATIC FEED	-	-	1338683-8	5-18022-5	-	-	-
						-	-	-	-	-	-	-
	2151501-7	H	FINE CRIMP HEIGHT ADJUST	NONE	-	-	-	-	-	-	-	
	7-2151501-7	G	CRIMP TOOLING KIT	-	-	-	-	-	-	-	-	

APPLICATOR DATA		
CRIMP	SIZE	TYPE
WIRE	3.30 mm [.130]	F
INSUL	6.60 mm [.260]	O

APPLICATOR INSTRUCTIONS 408-10389

TERMINAL DATA: TE TERMINAL		TE CRIMP SPECIFICATION	
TERMINAL NAME: TAB 5.8 X 0.8 ASSEMBLY			
WIRE STRIP LENGTH		INSULATION DIAMETER RANGE	
5.05-6.05 mm [.199-.238 IN]		$\emptyset$	$\Delta 1$
TERMINAL APPLICATION SPECIFICATION	114-18052	-	-
TERMINALS APPLIED $\Delta 1$			
TE TERMINAL	TE TERMINAL	TE SEAL	TE SEAL
964314-1		963245-1	CABLE $\emptyset$ 3.40-3.70mm

WIRE SIZE	CRIMP HEIGHT mm [INCH]	CRIMP HEIGHT REFERENCE SETTING
4.00mm <sup>2</sup>	2.34+/-0.05 [.092+/- .002]	8.2

- $\Delta 1$  RECOMMENDED SPARE PARTS
- $\Delta 2$  GREASE BEARING SURFACES LIGHTLY
- 3. LUBRICATE DAILY PER THE APPLICATOR INSTRUCTION SHEET SUPPLIED WITH THE APPLICATOR.
- $\Delta 4$  APPLICATOR SPECIFIC DATA TO BE ENTERED INTO BLANK MEMORY CHIP AT ASSEMBLY. SEE BELOW FOR PART NUMBER:  
 PNEUMATIC FEED WITH "SMART APPLICATOR" CONVERSION: 8-2151501-4  
 SERVO FEED WITH "FINE CRIMP HEIGHT ADJUST": 8-2151501-5  
 SERVO FEED WITH "NON-CRIMP HEIGHT ADJUST": 8-2151501-6
- 5. ADJUSTMENT OF THE STRIPPER MAY BE REQUIRED WHEN MOVING THE APPLICATOR BETWEEN BENCH AND LEADMAKER APPLICATIONS.
- $\Delta 6$  APPLY PART NUMBER 1-23419-5 LOCTITE TO THREADS OF ITEMS 50, 62. APPLY PART NUMBER 2-23419-6 LOCTITE TO THREADS OF ITEMS 242. FOR -6 ONLY APPLY PART NUMBER 1-23419-5 LOCTITE TO THREADS OF ITEMS 37.
- $\Delta 7$  GREASE THREADS, GROOVE AND O-RING ON ITEMS 35 & 252.
- $\Delta 8$  MAGNET, ITEM 166 MUST BE ORIENTED CORRECTLY IN ORDER TO PROPERLY ACTUATE THE COUNTER.
- $\Delta 9$  CRIMP HEIGHT REFERENCE SETTING WAS THE SETTING USED WHEN THE APPLICATOR WAS QUALIFIED AT THE FACTORY. ADJUSTMENT MAY BE NECESSARY WHEN RUNNING APPLICATOR IN THE FIELD.
- $\Delta 10$  TERMINAL PITCH NOT COMPATIBLE WITH MECHANICAL FEED.
- $\Delta 11$  TO CONVERT THE APPLICATOR TO A NON-CARRIER CUTTING STYLE, REMOVE ITEM 13 AND ATTACH TO THE LOCATION ON THE BACK SIDE OF THE HOUSING. REFER TO INSTRUCTION SHEET FOR ADDITIONAL INFORMATION.
- $\Delta 12$  WHEN ASSEMBLING -6 NON-CRIMP HEIGHT ADJUST APPLICATOR USE SHIM PACK 2119957-2 TO ALIGN APPLICATOR'S MAXIMUM WIRE CRIMP HEIGHT AT NORMAL TERMINATOR SHUT HEIGHT
- $\Delta 13$  THIS APPLICATOR APPLIES TERMINAL WITH A SEAL.
- $\Delta 14$  APPLY TORQ-SEAL IN ALLEN SOCKET TO FILL HOLE AFTER FLAT HD HAS BEEN ADJUSTED TO CORRECT HEIGHT AT QUALIFICATION. APPLY #1-23419-5 LOC-TITE TO THREADS.
- $\Delta 15$  CUT TO LENGTH AT ASSEMBLY

**\*WARNING**  
 ON INSTALLATION, SET WIRE DISC, ITEM 40 TO LARGEST WIRE SIZE SETTING. USE OF SETTINGS BELOW MINIMUM REQUIRED CRIMP HEIGHT SETTING WILL CAUSE DAMAGE TO CRIMP TOOLING.

$\Delta 2$	-	-	1	-	-	2119957-2	APPLICATOR SHIM PACK	260
$\Delta 7$	-	1	-	1	1	8-21084-0	O-RING, .676 ID, .070 DIA. MAT.	252
	-	-	-	-	1	2119640-1	PUSH ROD, AIR FEED	250
	-	-	-	-	1	1803259-1	BUSHING, FLANGED	249
	-	-	-	-	1	2119641-1	FEED CAM, AIR FEED	248
	-	1	-	1	1	2119798-1	DETENT PIN	247
	-	1	-	1	1	1-22279-3	SPRING, COMPRESSION	246
	-	-	1	-	-	2119758-1	RAM, AMP STYLE, SIDE FEED, NON-ADJ.	245
	-77	-7	-6	-5	-2	PART NO	DESCRIPTION	ITEM NO

**ATLANTIC VERSION**  
 Shown on sheets 1 of 4 & 2 of 4  
 (Pacific version shown on sheets 3 of 4 & 4 of 4)

SET UP GAUGE	LOC	DIST	REVISIONS					
2119599-1	A	66	P	LTM	DESCRIPTION	DATE	OWN	APVD
			H		ECR-16-011679	15AUG2016	MR	GB

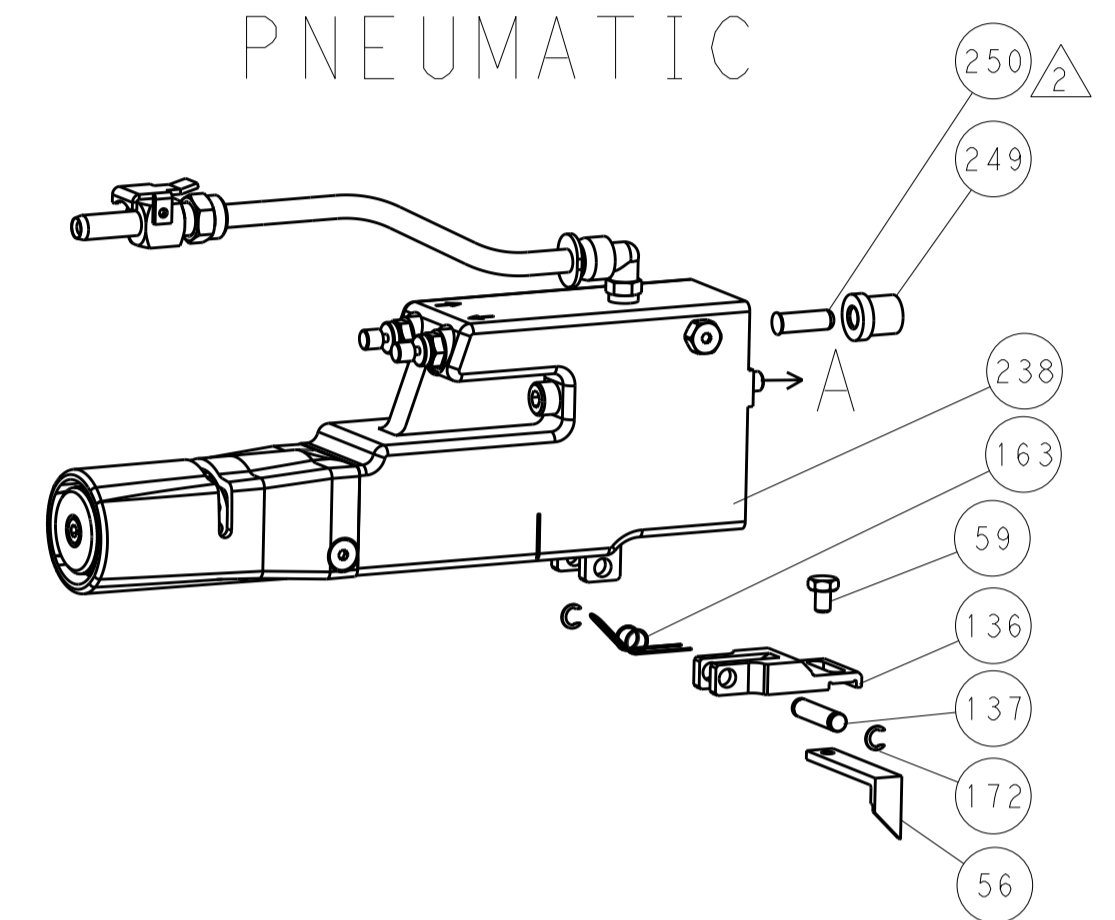
-	1	1	1	1	2119082-6	CAM, SNAIL, INSULATION ADJUSTMENT	244	
-	1	1	1	1	2079764-1	WASHER, WAVE SPRING, CREST-TO-CREST	243	
$\Delta 6$	-	1	1	1	2119083-1	RETAINER, INSULATION DIAL	242	
	-	1	1	1	7-18023-7	SCR, SKT HD CAP M3 X 4.0	241	
	-	-	2	2	2168400-6	SHCS, LOW HEAD, RoHS, M5 X 16	240	
	-	-	-	1	2063440-2	AIR FEED MODULE	238	
	-	-	1	1	2119740-2	TAG, IDENTIFICATION	213	
	-	-	1	1	1901094-3	SPACER, FEEDER	198	
	-	1	1	1	993111-1	PIN, SLOTTED SPRING 3.0 X 20.0	177	
	-	1	1	1	8-22280-7	SPRING, COMPRESSION	176	
	-	1	1	1	1752353-2	GUIDE PIN, HOLDDOWN	175	
	-	1	1	1	1901680-2	GUIDE PIN, HOLDDOWN	174	
	-	-	-	2	21045-3	RING, RETAIN, EXTERN, 3/16 CRESCENT	172	
$\Delta 8$	-	1	1	1	994969-1	MAGNET, RARE EARTH HIGH ENERGY	166	
	-	REF	REF	REF	994970-2	COUNTER, MAGNETIC	164	
	-	-	-	1	240638-1	SPRING, FEED FINGER	163	
	-	-	-	1	3-23627-7	PIN, RETAIN, GRVD, 3/16 X .854	137	
	-	-	-	1	2119799-1	HOLDER, FEED FINGER, AF	136	
	-	-	REF	REF	-	SEE NOTE 4	MEMORY CHIP, PROGRAMMED	135
	-	-	1	1	1633743-1	SERVO FEED LATCH ASM	133	
	-	1	1	1	1-18028-2	WASHER, FLAT, REG M4	119	
	-	-	REF	REF	-	2119944-1	FEED FINGER ASSEMBLY, SF	117
	-	1	1	1	1-690438-0	FRONT STRIP GUIDE	96	
	-	1	1	1	455888-8	SPACER, CRIMPER	82	
	-	1	1	1	2119956-1	DOCUMENTATION PACKAGE	71	
	-	1	1	1	2119791-5	DEPRESSOR, WIRE	70	
	-	1	1	1	2119943-1	WASHER, SPACER	69	
	-	1	-	-	2119740-1	TAG, IDENTIFICATION	67	
	-	2	2	2	2168078-1	SCREW, DRIVE, RH, RoHS, 2 x .188	66	
	-	1	-	1	2119793-1	LIMITER, ADJUSTMENT BOLT	63	
$\Delta 6$	-	3	-	3	992763-5	SCR, SET, SOC, CONE POINT, M3 X 4.0	62	
	-	1	1	1	2079383-4	SCR, BHSC, RoHS (M4 X 8)	60	
	-	-	-	1	5-18022-5	SCR, HEX HD CAP, M4 X 6.0	59	
$\Delta 4$	-	1	1	1	985575-5	SCR, FLT SKT HD CAP M3 X 16.0	57	
	-	-	-	1	1338683-8	FEED PAWL	56	
	-	4	4	4	2168400-1	SHCS, LOW HEAD, RoHS, M4 X 12	54	
	-	1	1	1	1-5018030-0	NUT, HEX, REG, RoHS, M3.5	52	
	-	1	1	1	1-1901681-2	HOLDDOWN, TERMINAL	51	
$\Delta 6$	-	1	1	1	2-1752354-9	STANDOFF, HOLD-DOWN	50	
	-	-	-	1	18023-9	SCR, SKT HD CAP M4 X 6.0	49	
	-	1	1	1	2119656-3	APPLICATOR BASIC ASSEMBLY, SF	46	
	-	1	-	1	2119370-1	RAM, AMP STYLE, SIDE FEED	44	
	-	1	1	1	2079383-7	SCR, BHSC, RoHS (M8 X 25)	41	
	-	1	-	1	2119645-1	DISC, NUMBERED FA WIRE ADJUSTMENT	40	
	-	1	-	1	2119957-1	APPLICATOR SHIM PACK	39	
	-	1	1	1	2119644-3	RAM WASHER, PRECISION	38	
$\Delta 6$	-	1	1	1	2119085-1	FA HEAD, ATLANTIC STYLE	37	
$\Delta 7$	-	1	-	1	2119092-1	BOLT, ADJUSTMENT	35	
	-	1	1	1	1-1752356-1	SUPPORT, TERMINAL	34	
$\Delta 5$	-	2	2	2	1-2079383-3	SCR, BHSC, RoHS (M4 X 25)	33	
	-	1	1	1	2161328-1	HEX HEAD, FLANGED, M5 X 8mm LONG	32	
	-	1	1	1	1-1320908-8	SPACER, STRIP GUIDE	30	
	-	1	1	1	2119959-6	ASSEMBLY, STRIP GUIDE	29	
	-	1	1	1	455888-4	SPACER, CRIMPER	28	
	-	2	2	2	22283-1	SPRING, COMPRESSION	27	
	-	1	1	1	240792-1	DRAG, TERMINAL	25	
	-	1	1	1	1320928-6	STRIP GUIDE	24	
	-	1	1	1	2168083-2	SCR, SKT HD CAP, RoHS, M4 X 8.0	21	
	-	1	1	1	1-18028-2	WASHER, FLAT, REG M4	20	
	-	1	1	1	2119533-1	STRIPPER, SIDE FEED	19	
$\Delta 11$	-	1	1	1	2119806-1	INSERT, SHEAR	13	
	-	1	1	1	3-22280-3	SPRING, COMPRESSION	12	
	-	1	1	1	1-356885-3	STOP, SHEAR	11	
	-	1	1	1	2119805-2	SHEAR HOLDER, FRONT	10	
	-	1	1	1	318059-4	FLOATING SHEAR, FRONT	9	
$\Delta 11$	1	1	1	1	2-1333229-7	ANVIL, COMBINATION	8	
	-	-	-	-	-	-	7	
	-	-	-	-	-	-	6	
	-	1	1	1	2-2119781-6	DEPRESSOR, SHEAR	5	
	-	1	1	1	238011-2	BLOCK, CRIMPER SPACER	4	
$\Delta 11$	1	1	1	1	5-1803018-6	CRIMPER, INSULATION O	3	
	-	-	-	-	-	-	2	
$\Delta 11$	1	1	1	1	1-456410-7	CRIMPER, WIRE PREMIUM	1	
	-77	-7	-6	-5	-2	PART NO	DESCRIPTION	ITEM NO

DIMENSIONS:		TOLERANCES UNLESS OTHERWISE SPECIFIED:		CUSTOMER DRAWING	
mm	0 PLC	±		SCALE	1:2
	1 PLC	±		SHEET	1 OF 4
	2 PLC	±		REV	H
	3 PLC	±			
	4 PLC	±			
	ANGLES	±			
	FINISH	±			

REVISONS		DATE	OWN	APVD
LOC	DIST			
A	66			
P	LTN	DESCRIPTION		
		SEE SHEET 1		

### FEED TYPE

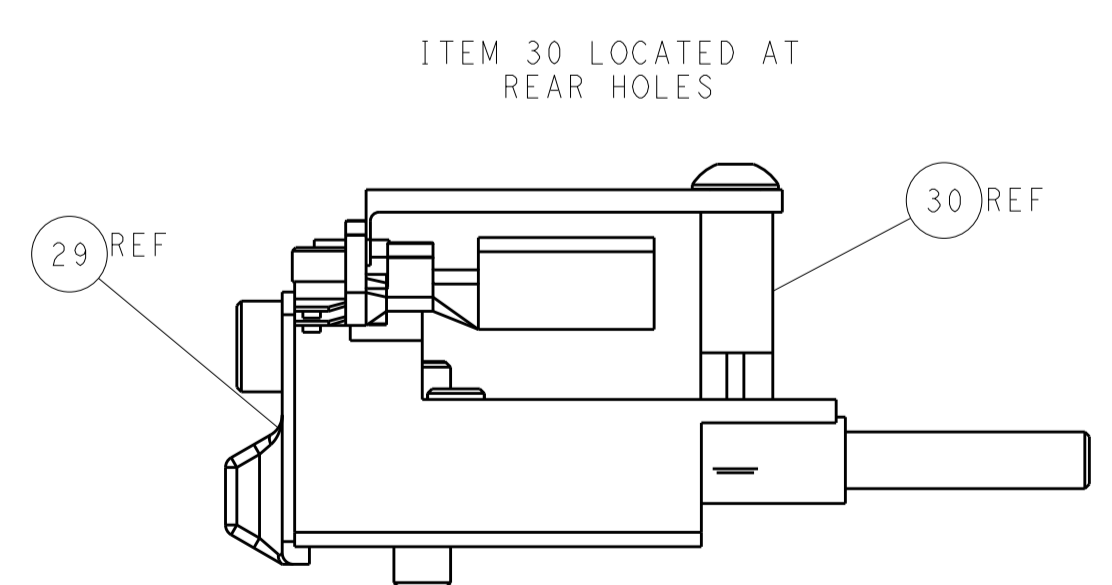
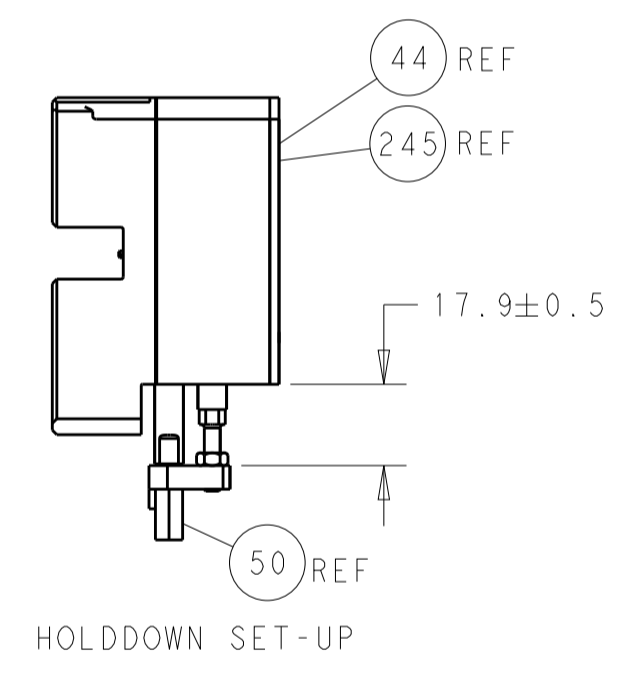
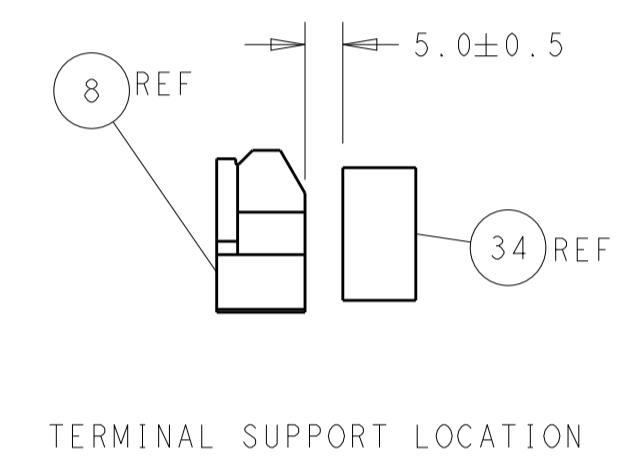
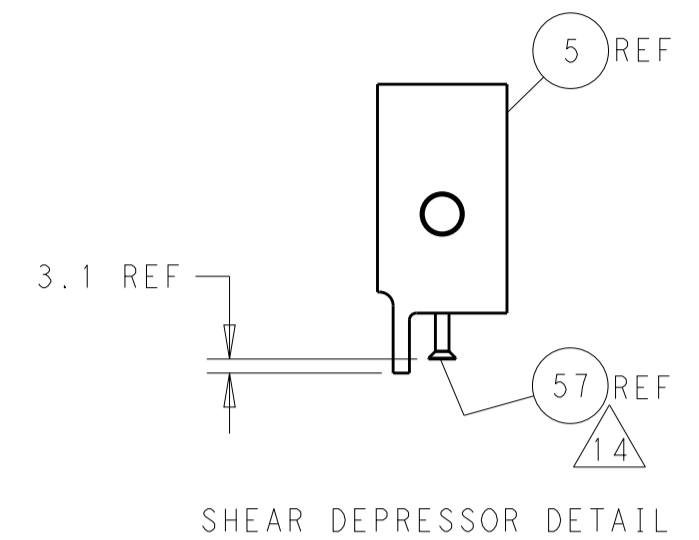
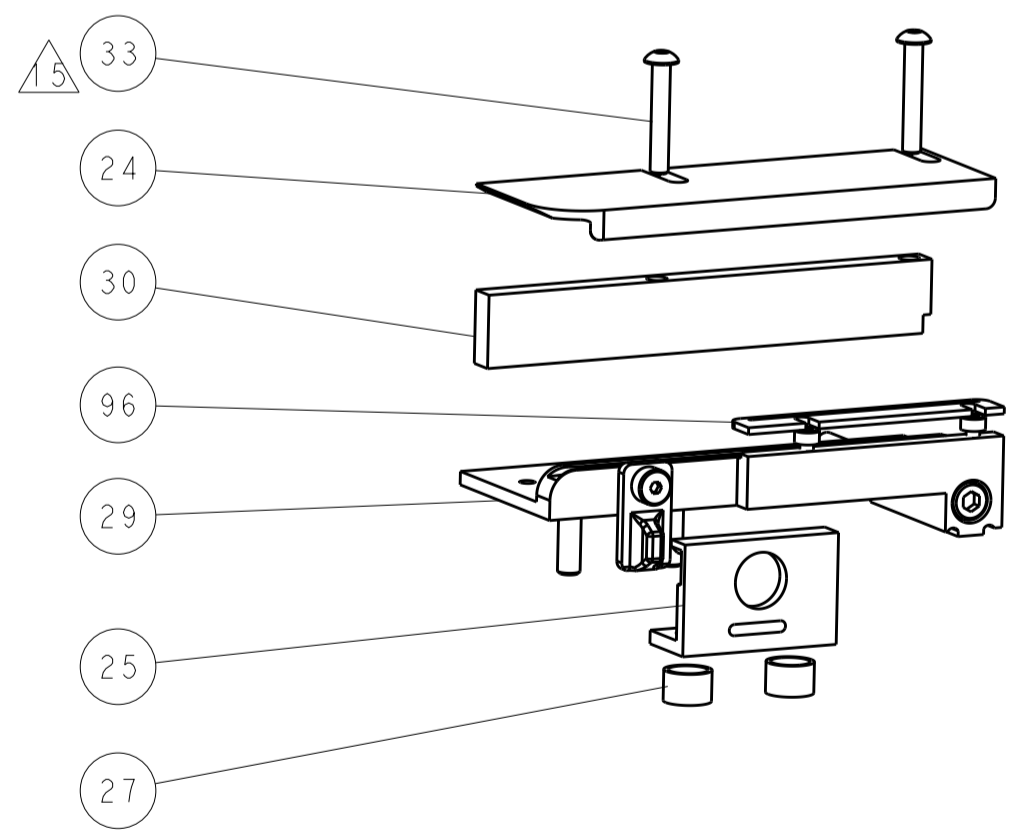
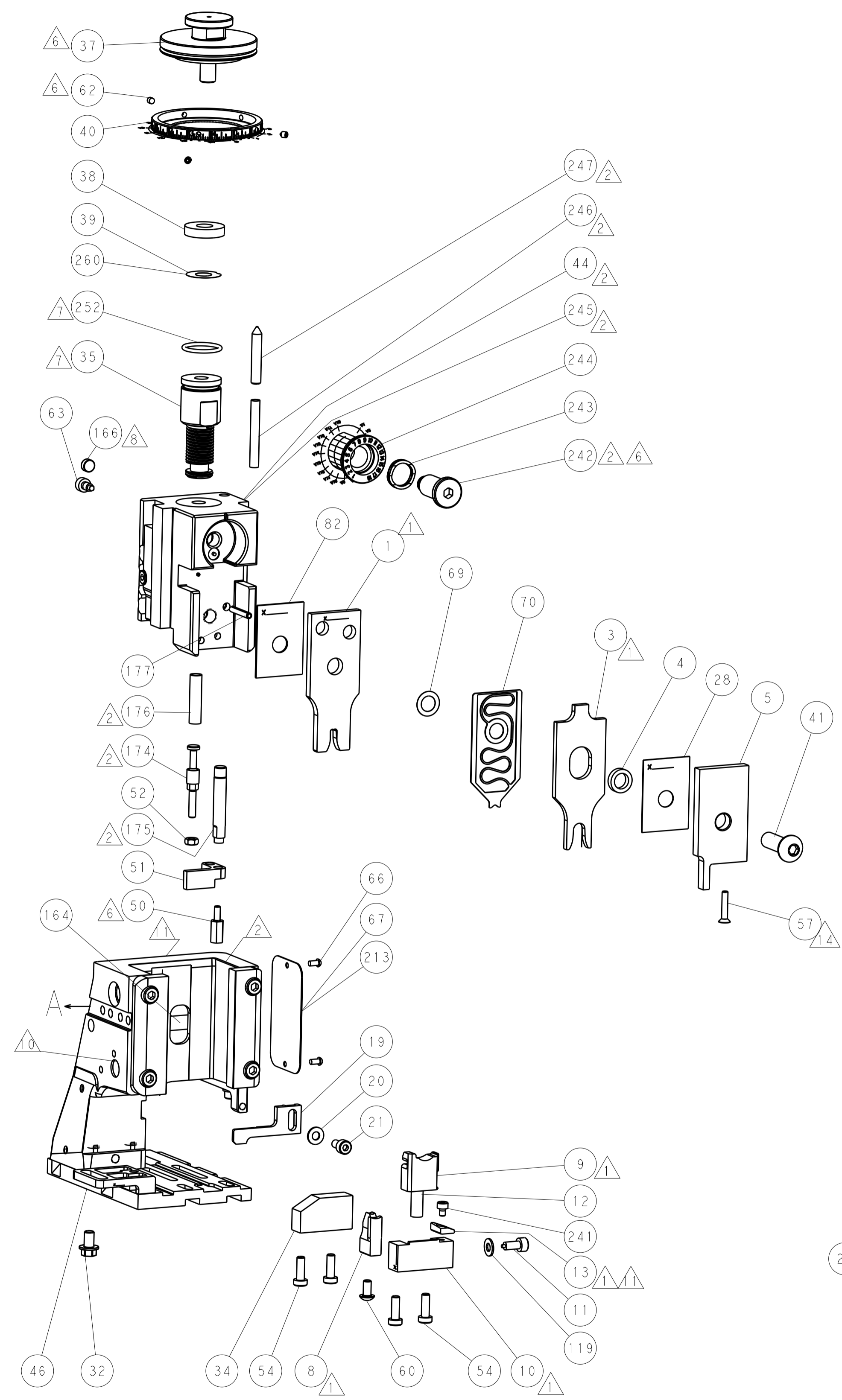
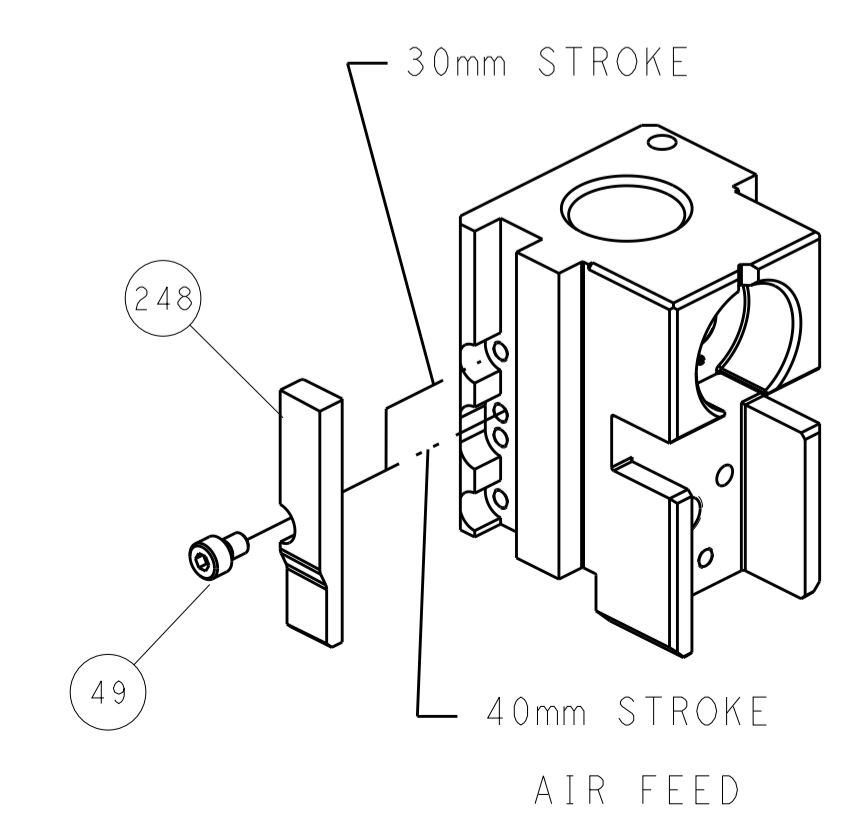
### PNEUMATIC



### SERVO LATCH PLATE

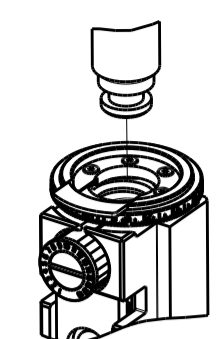


### CAM POSITION

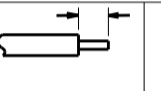



**ATLANTIC VERSION**  
 Shown on sheets 1 of 4 & 2 of 4  
 (Pacific version shown on sheets 3 of 4 & 4 of 4)

DIMENSIONS:		TOLERANCES UNLESS OTHERWISE SPECIFIED:		DWN C. CHEN 29AUG2012		TE Connectivity	
mm	0 PLC ±	1 PLC ±	2 PLC ±	3 PLC ±	4 PLC ±	5 PLC ±	Harrisburg, PA 17105-3608
ANGLES	FINISH			CHK S. XI 29AUG2012		NAME Ocean Side Feed Applicator	
MATERIAL				APVD J. CRUZ 29AUG2012		PRODUCT SPEC	
						APPLICATION SPEC	
				WEIGHT		SIZE CAGE CODE DRAWING NO RESTRICTED TO	
				A1 00779 ©=2151501		SCALE 1:2 SHEET 2 OF 4 REV H	
				CUSTOMER DRAWING			

PACIFIC VERSION TERMINATOR INTERFACE ADAPTER	PART NUMBER	REVISION	DESCRIPTION	FEED TYPE	APPLICATOR STYLE CONVERSION CHART					
					CONVERT TO	PART NUMBERS REQUIRED				
	2-2151501-2	H	FINE CRIMP HEIGHT ADJUST	PNEUMATIC	-	1338683-8	5-18022-5	-	-	-
					SERVO LATCH PLATE	2119951-1	8-2151501-5	1901094-3	2168400-6 (QUANTITY 2)	
	2-2151501-5	H	FINE CRIMP HEIGHT ADJUST	SERVO LATCH PLATE	-	1338683-8	5-18022-5	-	-	-
					PNEUMATIC FEED	2119950-1	1338683-8	5-18022-5	2119641-2	2119799-1
2-2151501-7	H	FINE CRIMP HEIGHT ADJUST	NONE	-	-	-	-	-	-	
7-2151501-7	G	CRIMP TOOLING KIT	-	-	-	-	-	-	-	

APPLICATOR DATA		
CRIMP	SIZE	TYPE
WIRE	3.30 mm [1.30]	F
INSUL	6.60 mm [2.60]	O
APPLICATOR INSTRUCTIONS 408-10389		

TERMINAL DATA: TE TERMINAL		TE CRIMP SPECIFICATION	
TERMINAL NAME: TAB 5.8 X 0.8 ASSEMBLY			
WIRE STRIP LENGTH		INSULATION DIAMETER RANGE	
5.05-6.05 mm [1.99-.238 IN]			
TERMINAL APPLICATION SPECIFICATION	114-18052	-	-
TERMINALS APPLIED			
TE TERMINAL	TE TERMINAL	TE SEAL	TE SEAL
964314-1			963245-1
			CABLE Ø 3.40-3.70mm

WIRE SIZE	CRIMP HEIGHT mm [INCH]	CRIMP HEIGHT REFERENCE SETTING
4.00mm2	2.34 +/- 0.05 [1.092 +/- .002]	8.2

- RECOMMENDED SPARE PARTS
- GREASE BEARING SURFACES LIGHTLY
- LUBRICATE DAILY PER THE APPLICATOR INSTRUCTION SHEET SUPPLIED WITH THE APPLICATOR.
- APPLICATOR SPECIFIC DATA TO BE ENTERED INTO BLANK MEMORY CHIP AT ASSEMBLY. SEE BELOW FOR PART NUMBER:  
 PNEUMATIC FEED WITH "SMART APPLICATOR" CONVERSION: 8-2151501-4  
 SERVO FEED WITH "FINE CRIMP HEIGHT ADJUST": 8-2151501-5
- ADJUSTMENT OF THE STRIPPER MAY BE REQUIRED WHEN MOVING THE APPLICATOR BETWEEN BENCH AND LEADMAKER APPLICATIONS.
- APPLY PART NUMBER 1-23419-5 LOCTITE TO THREADS OF ITEMS 50, 62. APPLY PART NUMBER 2-23419-6 LOCTITE TO THREADS OF ITEMS 242.
- GREASE THREADS, GROOVE AND O-RING ON ITEMS 139 & 152.
- MAGNET MUST BE ORIENTED CORRECTLY IN ORDER TO PROPERLY ACTUATE THE COUNTER.
- CRIMP HEIGHT REFERENCE SETTING WAS THE SETTING USED WHEN THE APPLICATOR WAS QUALIFIED AT THE FACTORY. ADJUSTMENT MAY BE NECESSARY WHEN RUNNING APPLICATOR IN THE FIELD.
- TERMINAL PITCH NOT COMPATIBLE WITH MECHANICAL FEED.
- TO CONVERT THE APPLICATOR TO A NON-CARRIER CUTTING STYLE, REMOVE ITEM 13 AND ATTACH TO THE LOCATION ON BACK SIDE OF THE HOUSING. REFER TO INSTRUCTION SHEET FOR ADDITIONAL INFORMATION.
- THIS APPLICATOR APPLIES TERMINAL WITH A SEAL.
- APPLY TORO-SEAL IN ALLEN SOCKET TO FILL HOLE AFTER FLAT HD HAS BEEN ADJUSTED TO CORRECT HEIGHT AT QUALIFICATION. APPLY #1-23419-5 LOC-TITE TO THREADS.
- CUT TO LENGTH AT ASSEMBLY.

**\*WARNING**  
 ON INSTALLATION, SET WIRE DISC, ITEM 40 TO LARGEST WIRE SIZE SETTING. USE OF SETTINGS BELOW MINIMUM REQUIRED CRIMP HEIGHT SETTING WILL CAUSE DAMAGE TO CRIMP TOOLING.

-77	-27	-25	-22	PART NO	DESCRIPTION	ITEM NO
-	1	1	1	2119782-1	FINE ADJUST HEAD ASM, PACIFIC STYLE	251
-	-	-	1	2119640-1	PUSH ROD, AIR FEED	250
-	-	-	1	1803259-1	BUSHING, FLANGED	249
-	1	1	1	1-22279-3	SPRING, COMPRESSION	246
-	1	1	1	2119082-6	CAM, SNAIL, INSULATION ADJUSTMENT	244
-	1	1	1	2079764-1	WASHER, WAVE SPRING, CREST-TO-CREST	243

**PACIFIC VERSION**  
 Shown on sheets 3 of 4 & 4 of 4  
 (Atlantic version shown on sheets 1 of 4 & 2 of 4)

SET UP GAUGE	LOC	DIST	REVISIONS			
2119599-1	A	66	REV	DATE	BY	APPV
			-	SEE SHEET 1	-	-

6	-	1	1	1	2119083-1	RETAINER, INSULATION DIAL	242
	-	1	1	1	7-18023-7	SCR, SKT HD CAP M3 X 4.0	241
	-	-	2	-	2168400-6	SHCS, LOW HEAD, RoHS, M5 X 16	240
	-	-	-	1	2063440-2	AIR FEED MODULE	238
	-	-	1	-	2119740-2	TAG, IDENTIFICATION	213
	-	-	1	-	1901094-3	SPACER, FEEDER	198
	-	1	1	1	993111-1	PIN, SLOTTED SPRING 3.0 X 20.0	177
	-	1	1	1	8-22280-7	SPRING, COMPRESSION	176
	-	1	1	1	1752353-2	GUIDE PIN, HOLDDOWN	175
	-	1	1	1	1901680-2	GUIDE PIN, HOLDDOWN	174
	-	-	-	2	21045-3	RING, RETAIN, EXTERN, 3/16 CRESCENT	172
8	-	1	1	1	994969-1	MAGNET, RARE EARTH HIGH ENERGY	166
	-	REF	REF	REF	994970-2	COUNTER, MAGNETIC	164
	-	-	-	1	240638-1	SPRING, FEED FINGER	163
7	-	1	1	1	8-21084-1	O-RING, .801 ID, .070 DIA. MAT.	152
	-	-	-	1	2119641-2	FEED CAM, AIR FEED	151
	-	1	1	1	2119798-2	DETENT PIN	145
	-	1	1	1	2079383-8	SCR, BHSC, RoHS (M4 X 16)	144
	-	4	4	4	2168400-5	SHCS, LOW HEAD, RoHS, M4 X 20	143
	-	1	1	1	2119656-4	APPLICATOR BASIC ASSEMBLY, SF	141
	-	1	1	1	2119650-1	RAM, ASIAN STYLE, SIDE FEED	140
7	-	1	1	1	2119092-2	BOLT, ADJUSTMENT	139
	-	-	-	1	3-23627-7	PIN, RETAIN, GRVD, 3/16 X .854	137
	-	-	-	1	2119799-1	HOLDER, FEED FINGER, AF	136
	-	-	REF	-	SEE NOTE 4	MEMORY CHIP, PROGRAMMED	135
	-	-	1	-	1633743-1	SERVO FEED LATCH ASM	133
	-	1	1	1	1-18028-2	WASHER, FLAT, REG M4	119
	-	-	REF	-	2119944-1	FEED FINGER ASSEMBLY, SF	117
	-	1	1	1	1-690438-0	FRONT STRIP GUIDE	96
	-	1	1	1	455888-8	SPACER, CRIMPER	82
	-	1	1	1	2119956-1	DOCUMENTATION PACKAGE	71
	-	1	1	1	2119791-5	DEPRESSOR, WIRE	70
	-	1	1	1	2119943-1	WASHER, SPACER	69
	-	1	-	1	2119740-1	TAG, IDENTIFICATION	67
	-	2	2	2	2168078-1	SCREW, DRIVE, RH, RoHS, 2 x .188	66
	-	1	1	1	2119793-1	LIMITER, ADJUSTMENT BOLT	63
6	-	3	3	3	992763-5	SCR, SET, SOC, CONE POINT, M3 x 4.0	62
	-	-	-	1	5-18022-5	SCR, HEX HD CAP, M4 X 6.0	59
3	-	1	1	1	985575-5	SCR, FLT SKT HD CAP M3 X 16.0	57
	-	-	-	1	1338683-8	FEED PAWL	56
	-	1	1	1	1-5018030-0	NUT, HEX, REG, RoHS, M3.5	52
	-	1	1	1	1-1901681-2	HOLDDOWN, TERMINAL	51
6	-	1	1	1	2-1752354-9	STANDOFF, HOLD-DOWN	50
	-	-	-	1	18023-9	SCR, SKT HD CAP M4 X 6.0	49
	-	1	1	1	2079383-7	SCR, BHSC, RoHS (M8 X 25)	41
	-	1	1	1	2119645-1	DISC, NUMBERED FA WIRE ADJUSTMENT	40
	-	1	1	1	2119957-1	APPLICATOR SHIM PACK	39
	-	1	1	1	2119644-3	RAM WASHER, PRECISION	38
	-	1	1	1	1-1752356-1	SUPPORT, TERMINAL	34
4	-	2	2	2	1-2079383-3	SCR, BHSC, RoHS (M4 X 25)	33
	-	1	1	1	2161328-1	HEX HEAD, FLANGED, M5 x 8mm LONG	32
	-	1	1	1	1-1320908-8	SPACER, STRIP GUIDE	30
	-	1	1	1	2119959-6	ASSEMBLY, STRIP GUIDE	29
	-	1	1	1	455888-4	SPACER, CRIMPER	28
	-	2	2	2	22283-1	SPRING, COMPRESSION	27
	-	1	1	1	240792-1	DRAG, TERMINAL	25
	-	1	1	1	1320928-6	STRIP GUIDE	24
	-	1	1	1	2168083-2	SCR, SKT HD CAP, RoHS, M4 X 8.0	21
	-	1	1	1	1-18028-2	WASHER, FLAT, REG M4	20
	-	1	1	1	2119533-1	STRIPPER, SIDE FEED	19
1	-	1	1	1	2119806-1	INSERT, SHEAR	13
	-	1	1	1	3-22280-3	SPRING, COMPRESSION	12
	-	1	1	1	1-356885-3	STOP, SHEAR	11
1	-	1	1	1	2119805-2	SHEAR HOLDER, FRONT	10
1	-	1	1	1	318059-4	FLOATING SHEAR, FRONT	9
1	1	1	1	1	2-1333229-7	ANVIL, COMBINATION	8
	-	-	-	-	-	-	7
	-	-	-	-	-	-	6
	-	1	1	1	2-2119781-6	DEPRESSOR, SHEAR	5
	-	1	1	1	238011-2	BLOCK, CRIMPER SPACER	4
	1	1	1	1	5-1803018-6	CRIMPER, INSULATION O	3
	-	-	-	-	-	-	2
1	1	1	1	1	1-456410-7	CRIMPER, WIRE PREMIUM	1

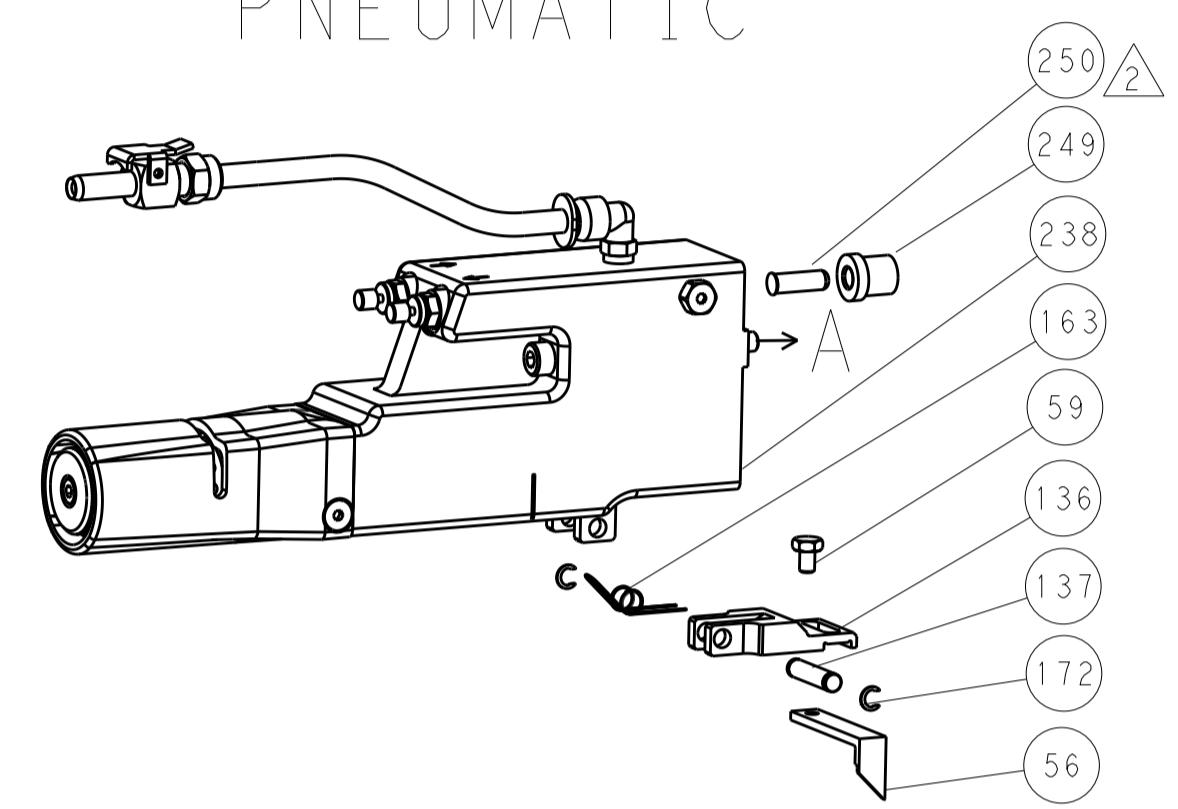
DIMENSIONS:		TOLERANCES UNLESS OTHERWISE SPECIFIED:		DRAWING NO		DATE	
mm	0 PLC	±		29AUG2012	29AUG2012		
	1 PLC	±		29AUG2012	29AUG2012		
	2 PLC	±		29AUG2012	29AUG2012		
	3 PLC	±		29AUG2012	29AUG2012		
	4 PLC	±		29AUG2012	29AUG2012		
	ANGLES	±		29AUG2012	29AUG2012		
	FINISH	±		29AUG2012	29AUG2012		

NAME	SIZE	CAGE CODE	DRAWING NO	RESTRICTED TO
TE Connectivity Harrisburg, PA 17105-3608	A1	00779	2151501	REV H

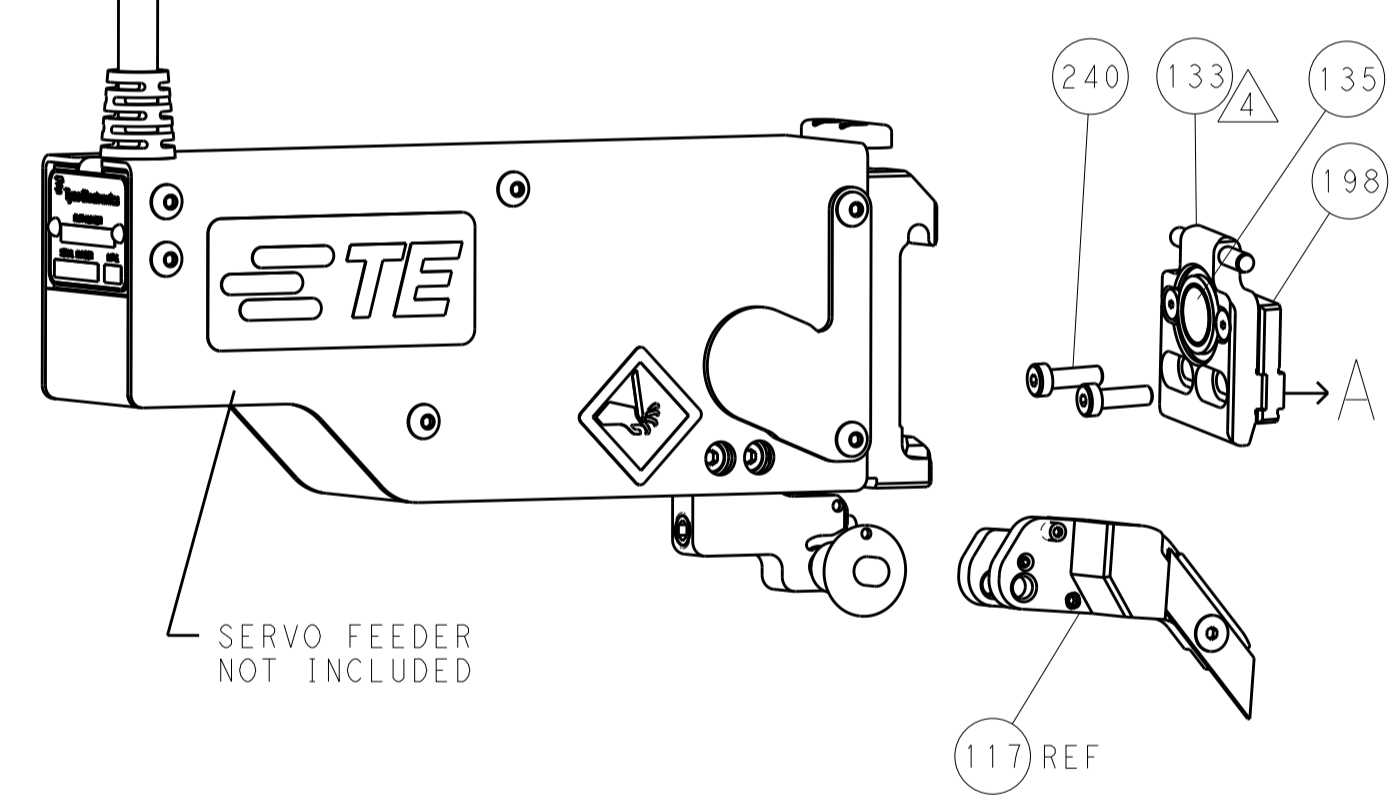
LOC		DIST		REVISIONS			
A	66	P	LTM	DESCRIPTION	DATE	DWN	APVD
		-		SEE SHEET 1			

### FEED TYPE

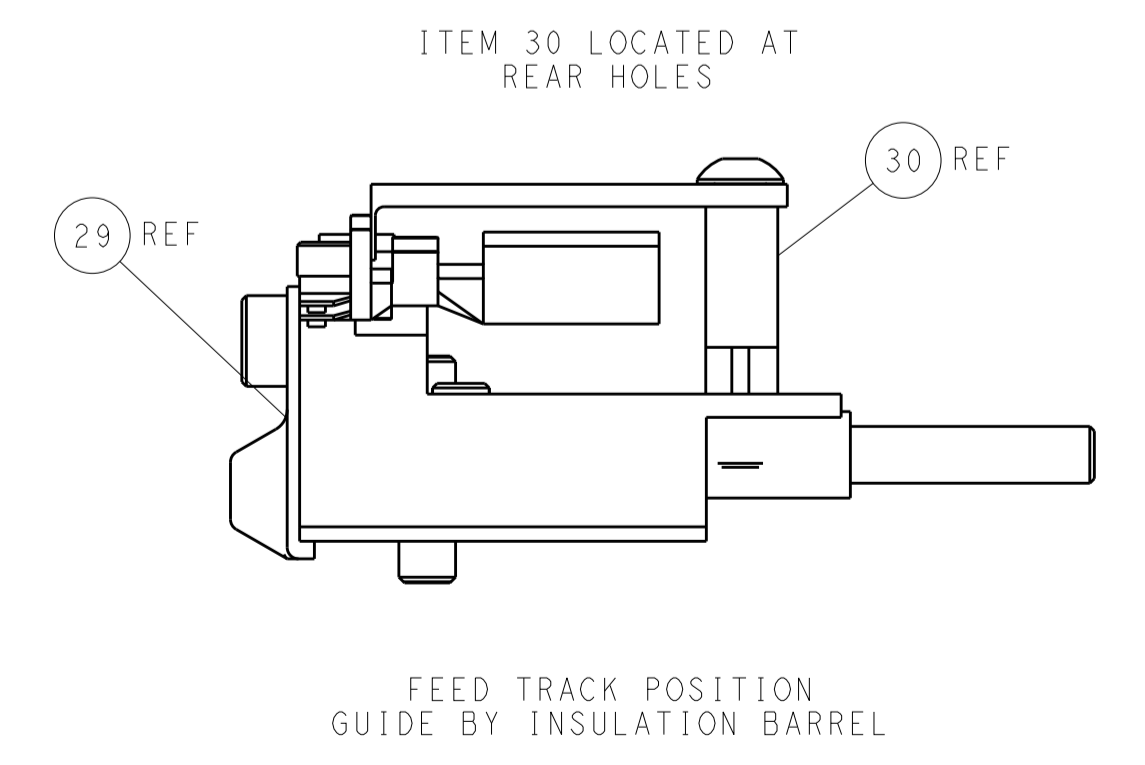
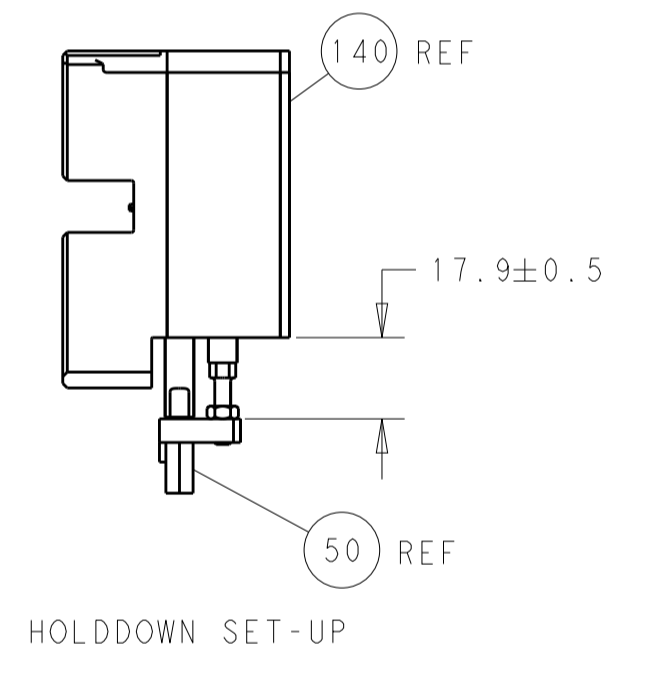
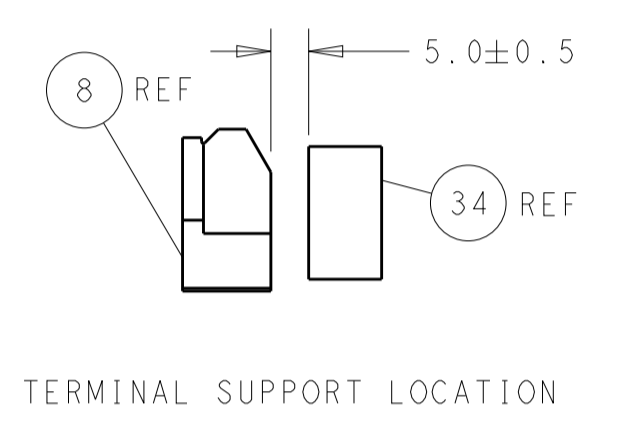
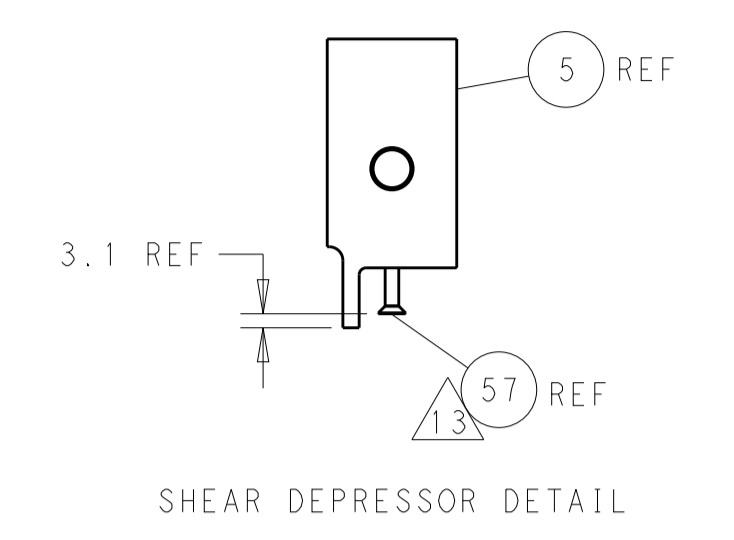
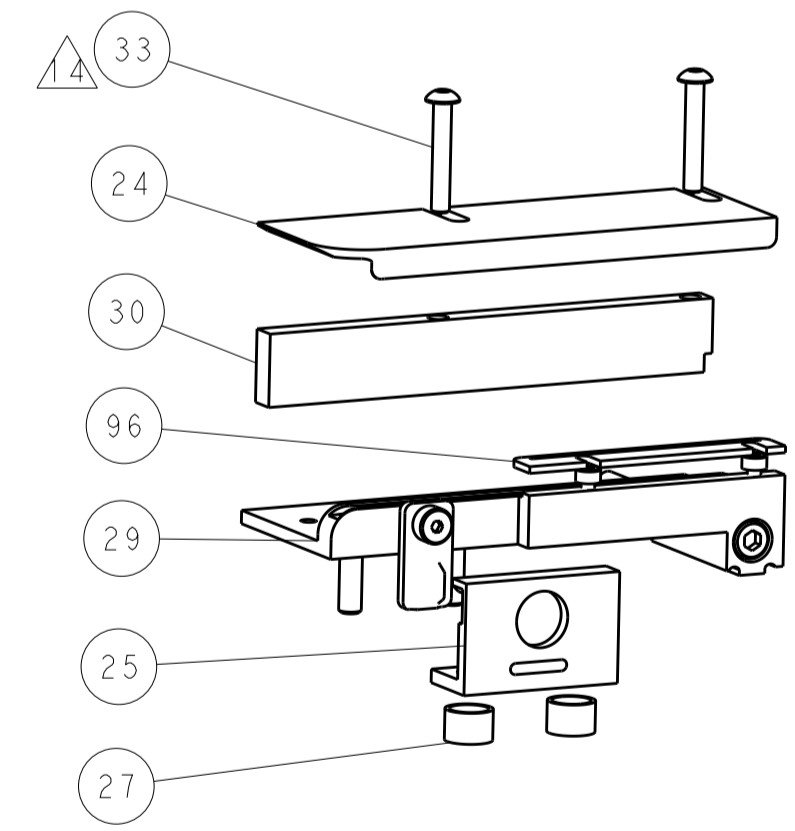
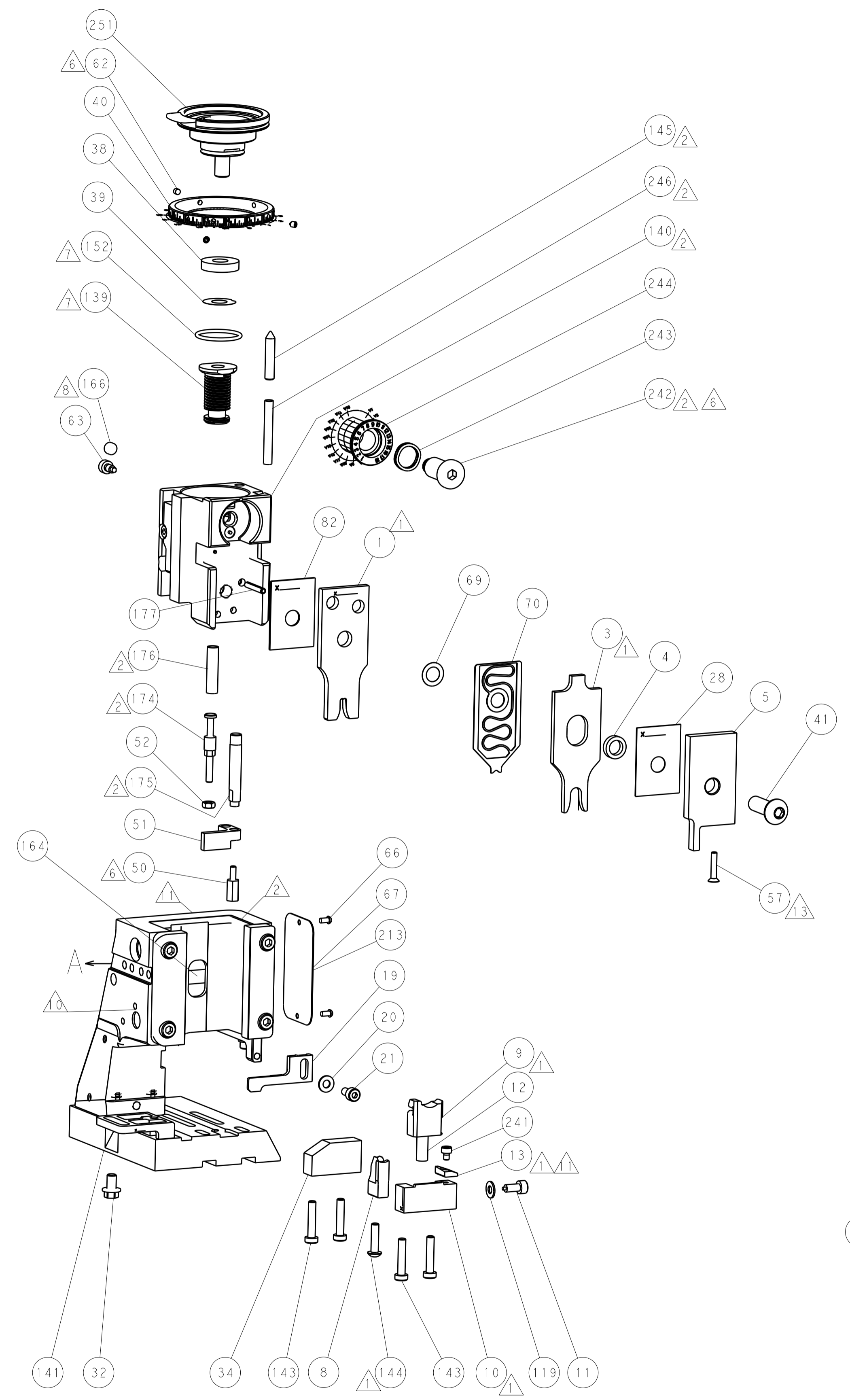
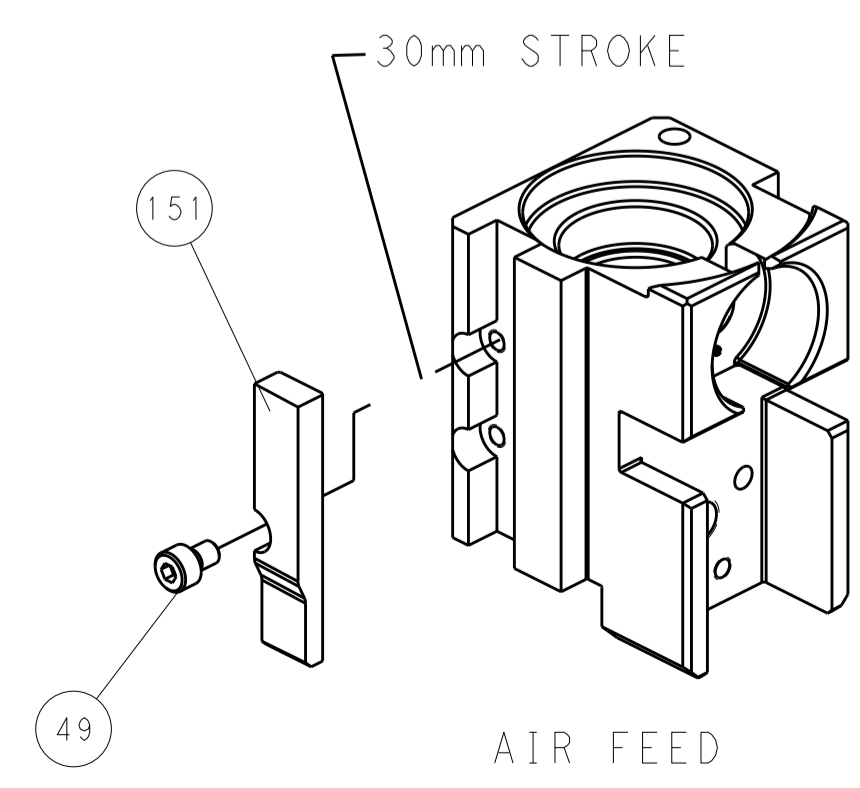
### PNEUMATIC



### SERVO LATCH PLATE



### CAM POSITION



**PACIFIC VERSION**  
 Shown on sheets 3 of 4 & 4 of 4  
 (Atlantic version shown on sheets 1 of 4 & 2 of 4)

<small>THIS DRAWING IS UNPUBLISHED. RELEASED FOR PUBLICATION. COPYRIGHT 20 BY TYCO ELECTRONICS CORPORATION. ALL RIGHTS RESERVED.</small>		DWN: C. CHEN 29AUG2012 CHK: S. XI 29AUG2012 APVD: J. CRUZ 29AUG2012	TE Connectivity Harrisburg, PA 17105-3608
DIMENSIONS: mm TOLERANCES UNLESS OTHERWISE SPECIFIED: 0 PLC ± 1 PLC ± 2 PLC ± 3 PLC ± 4 PLC ± ANGLES ±		NAME: Ocean Side Feed Applicator PRODUCT SPEC: APPLICATION SPEC: SIZE: A1 CAGE CODE: 00779 DRAWING NO: 2151501	RESTRICTED TO: H
MATERIAL: FINISH:		WEIGHT: CUSTOMER DRAWING:	SCALE: 1:2 SHEET: 4 of 4 REV: H