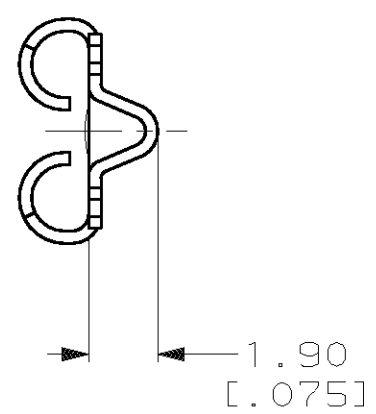
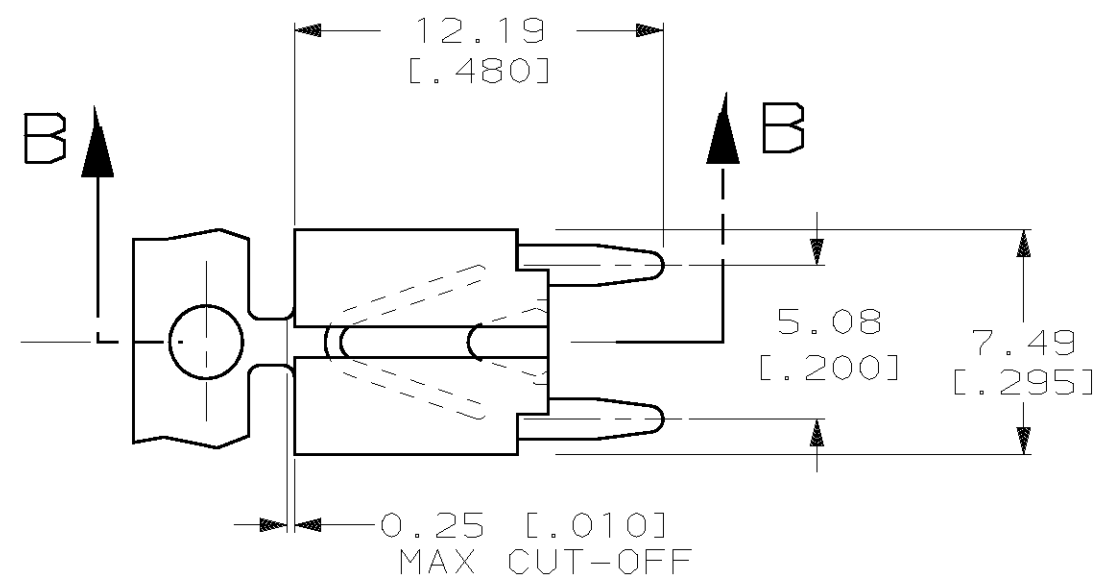
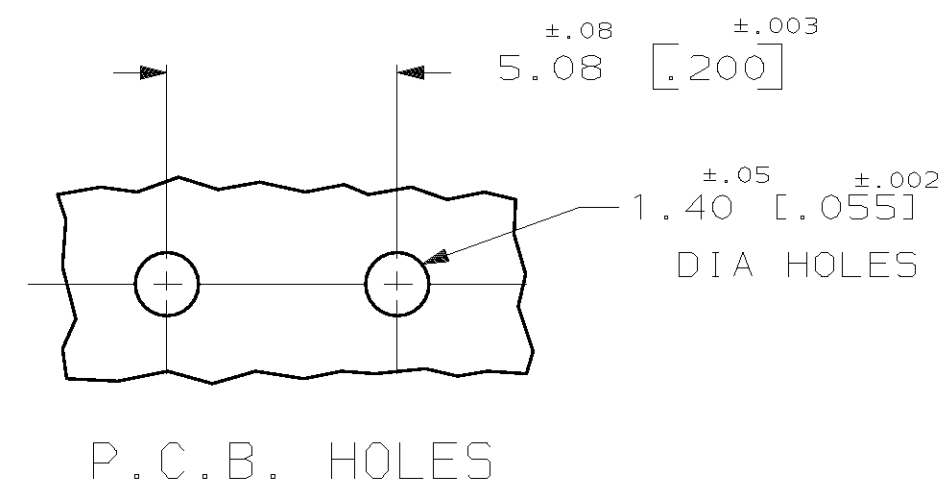
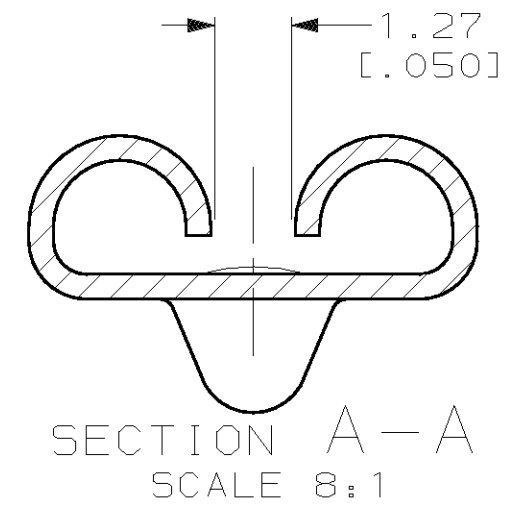
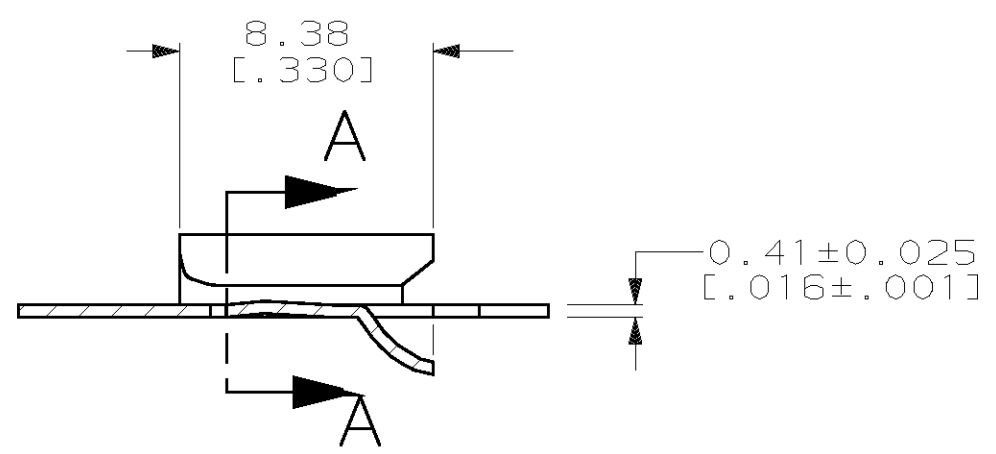


THIS DRAWING IS UNPUBLISHED. RELEASED FOR PUBLICATION, 19 .  
© COPYRIGHT 19 BY AMP INCORPORATED. ALL INTERNATIONAL RIGHTS RESERVED.

LOC	DIST	P	F	ZONE	LTR	DESCRIPTION	DATE	APPD
AF	50				C	REV PER 061A-0131-98	5/13/98	JR/JW



- 1 CONTINUOUS STRIP ON REELS.
- 2 0.00254 [.000100] MIN THK TIN OVER 0.00127 [.000050] MIN NICKEL.
- 3 MATING TAB THK IS 0.81±0.025 [.032±.001].



63968-1  
PART NO

THIS DRAWING IS A CONTROLLED DOCUMENT FOR AMP INCORPORATED. IT IS SUBJECT TO CHANGE AND THE CONTROLLING ENGINEERING ORGANIZATION SHOULD BE CONTACTED FOR THE LATEST REVISION.

DO NOT SCALE PRINT. UNLESS SPECIFIED DIMENSIONS IN mm [INCHES] TOLERANCES ON: 2 PLC DEC ± 0.25 [.010] 3 PLC DEC ± - ANGLES ± -	DR 2/18/97 JR RUTH	<b>AMP</b> AMP Incorporated Harrisburg, PA 17105-3608
	CHK 2/18/97 MS FEHER	
	APPD 2/18/97 P DESANTIS	NAME RECEPTACLE, L.I.F. FASTON™ 6.35/5.21 [.250/.205] SERIES, PC BOARD MOUNTED
	APPD 2/18/97 V KARABCIEVSCHY	SIZE B CAGE CODE 00779 DRAWING NO C-63968
MATERIAL H04 BRASS	PRODUCT SPEC -	SCALE 4:1 SHEET 1 OF 1
FINISH TIN OVER NICKEL	APPLICATION SPEC -	
	WEIGHT -	