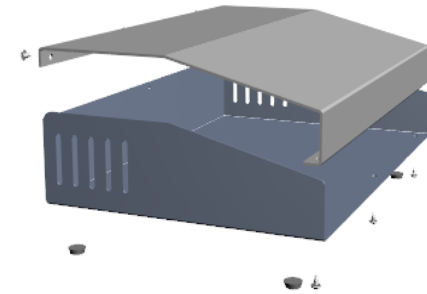
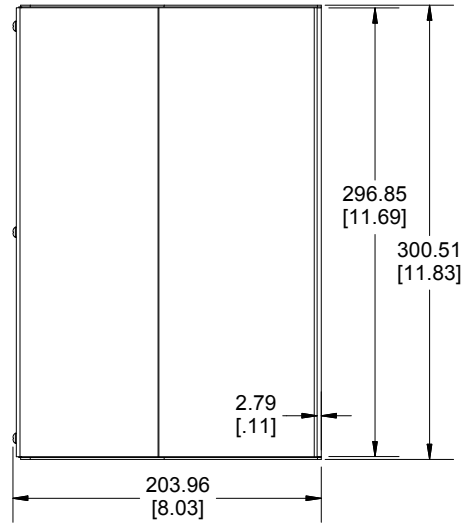
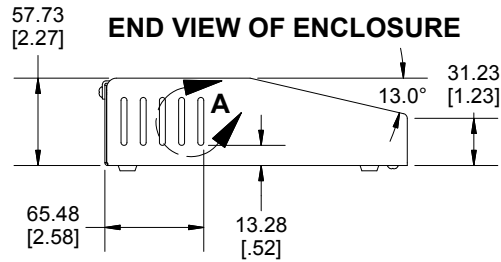
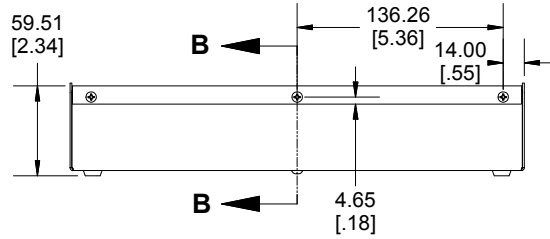


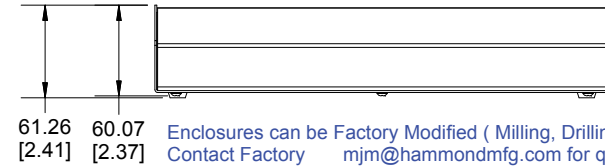
TOP VIEW OF ENCLOSURE



BACK VIEW OF ENCLOSURE



FRONT VIEW OF ENCLOSURE

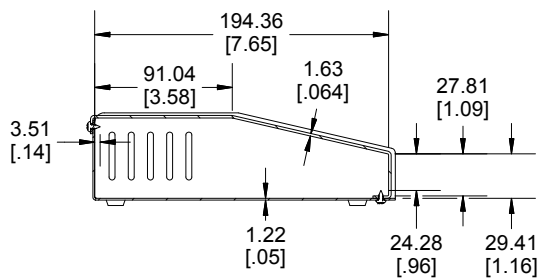


Enclosures can be Factory Modified (Milling, Drilling, Printing etc.)
 Contact Factory mjm@hammondmfg.com for quotes
 Solid models of this enclosure available in STEP or IGES.

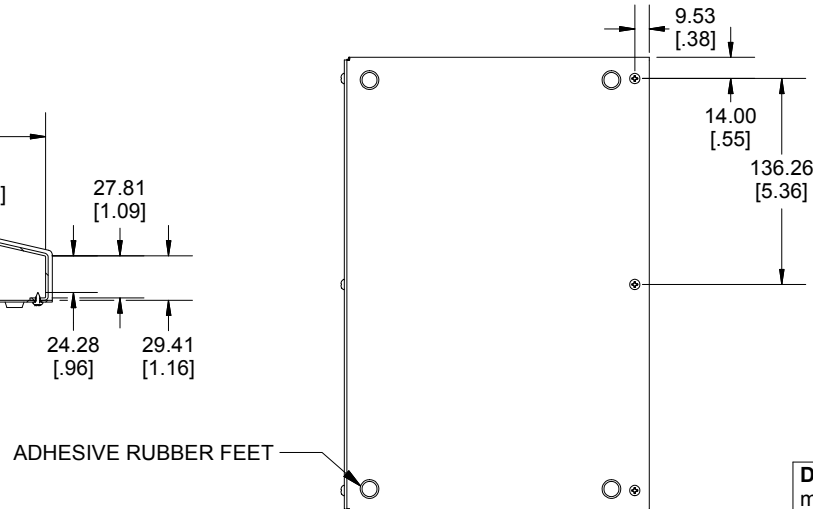
NOTE

Case Includes Adhesive Rubber Feet and Required Hardware.
 Enclosure Case is Made of 0.05" Steel.
 Top Panel is Made of 0.064" Aluminum.

**SECTION B-B
 END VIEW**



BOTTOM VIEW OF ENCLOSURE



ADHESIVE RUBBER FEET

Dimensions:
 mm
 [inches]

PART NUMBERS	
500-0950 Enclosure	
Smooth Light Grey Top Case Dark Satin Grey Base Case	500-0950
ACCESSORIES	
Plated Cover Screws (Pkg 50) [#6 x 1/4 Self Tapping]	SC19482-50
Grey Self-Adhesive Rubber Feet (Pkg 4)	1421T2GY

**HAMMOND
 MANUFACTURING™**

500-0950

www.hammondmfg.com