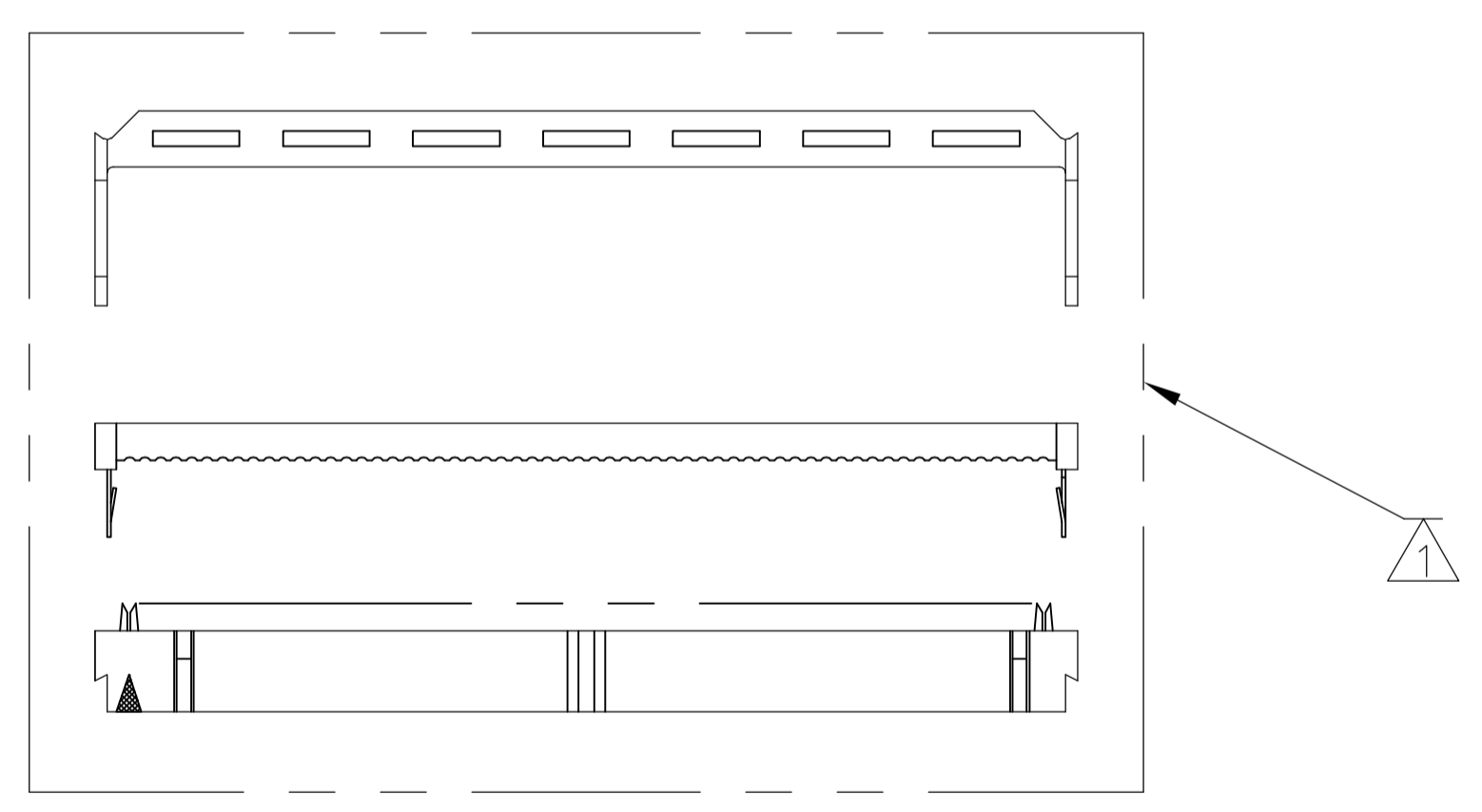
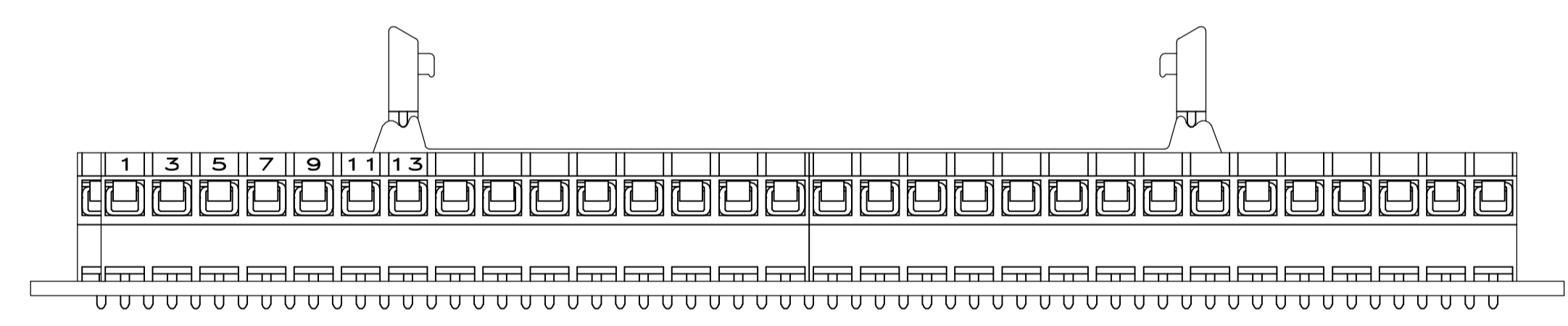
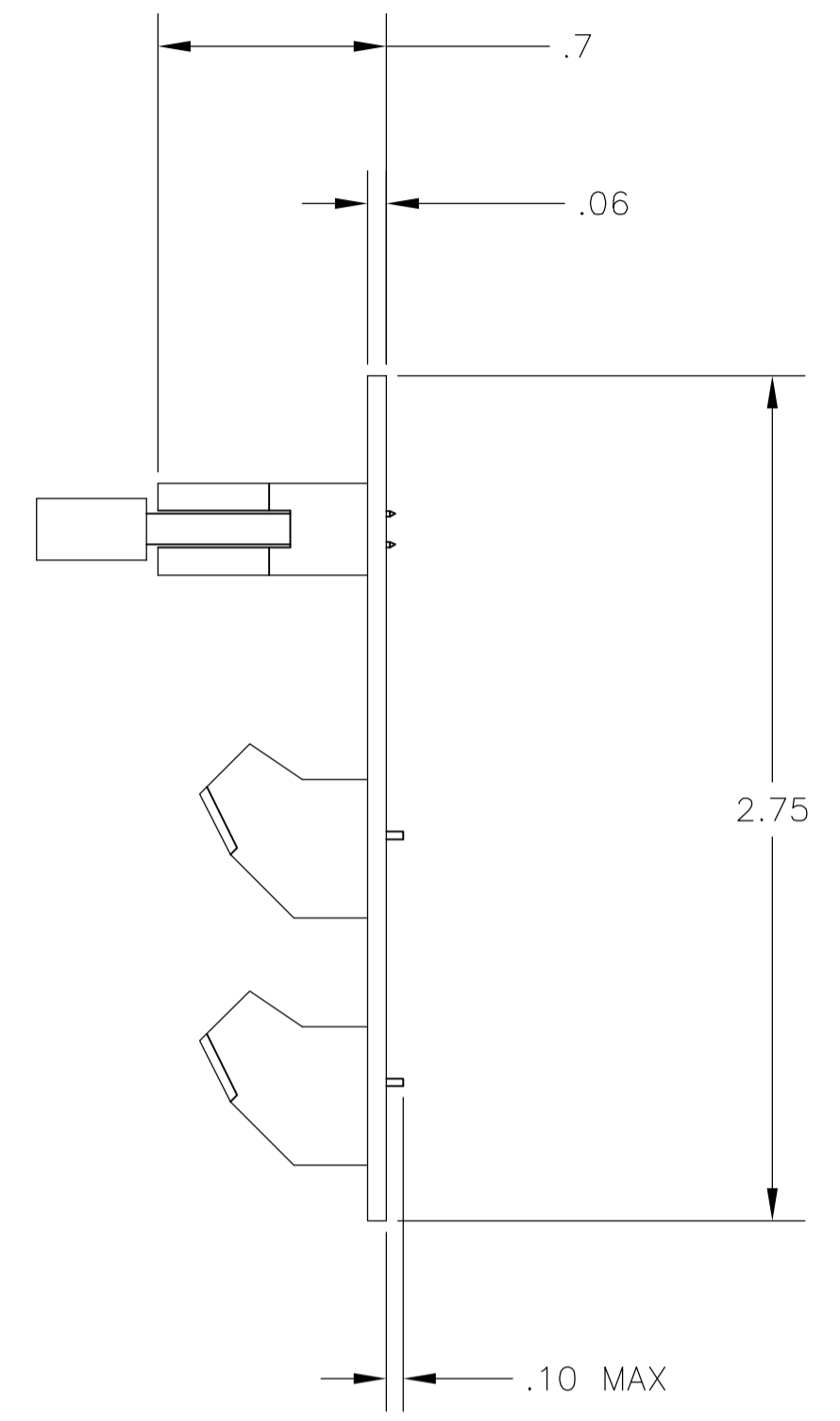
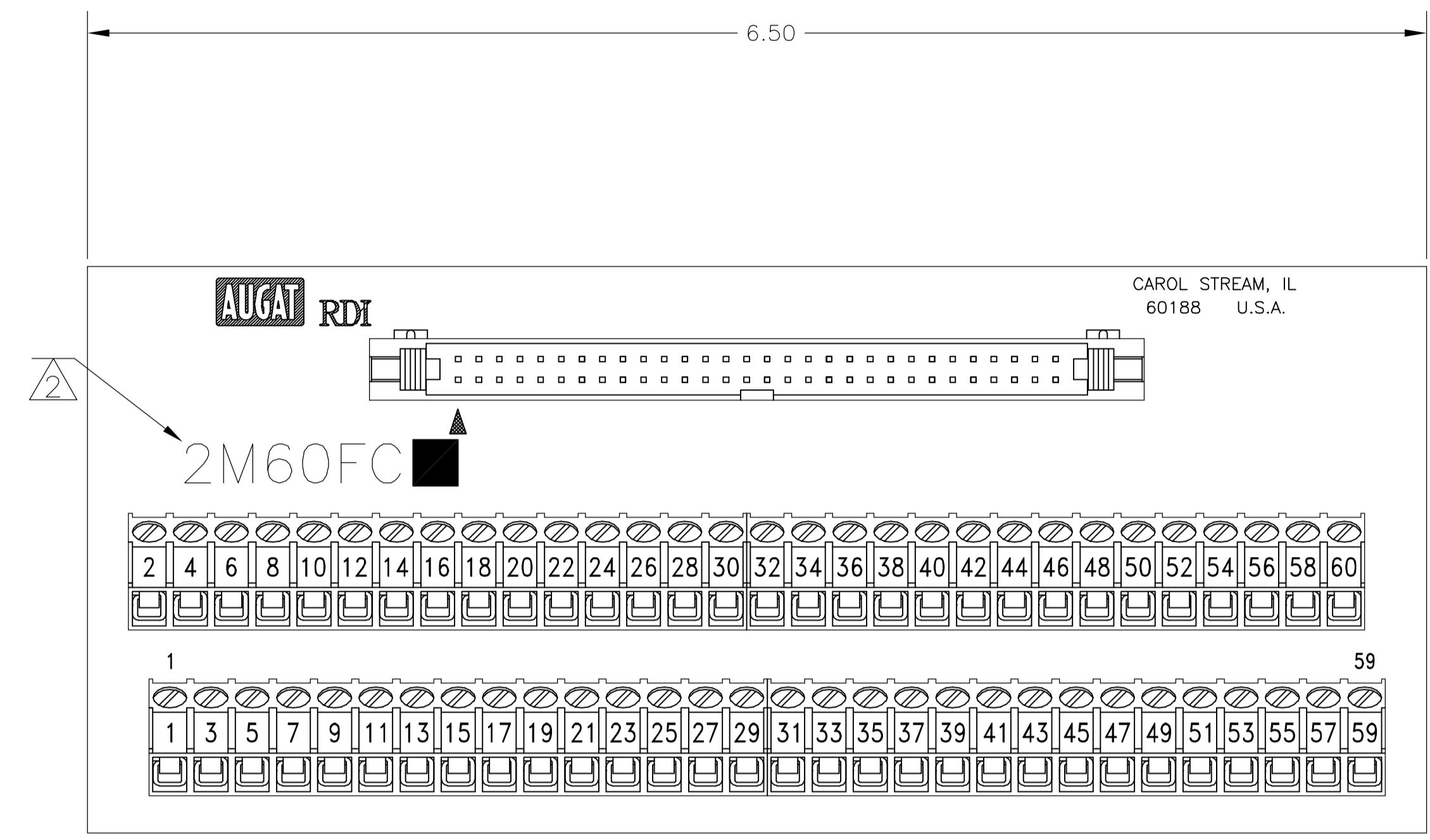


LOC		DIST		REVISIONS			
FT	O	REV	DATE	BY	APP'D	DATE	BY
A		1	9/30/05	SS	SRV		

**HEADER:**  
**MATERIALS:**  
 HEADER: COPPER ALLOY, GOLD PLATED,  
 94V-0 THERMOPLASTIC.  
 CONNECTOR: COPPER ALLOY, GOLD PLATED,  
 94V-0 THERMOPLASTIC.  
**ELECTRICAL:**  
 RATING: 1 AMPERE MAX. (CONNECTOR).  
**MECHANICAL:**  
 WIRE RANGE: 26-30 AWG SOLID, 28 AWG STRANDED.  
**TERMINAL BLOCK:**  
**MATERIALS:**  
 HOUSING: THERMOPLASTIC NYLON, BLACK, 94V-0.  
 TERMINALS: COPPER ALLOY, TIN PLATED.  
 SCREWS: 3M, BRASS, NICKEL PLATED.  
**ELECTRICAL:**  
 RATING: 10A, 300V(UL).  
**MECHANICAL:**  
 WIRE RANGE: 14-22 AWG.  
**MOUNTING:**  
**MATERIALS:**  
 MOUNTING: 2TK2 AND 2TK2D SERIES SNAPTRACK  
 (SOLD SEPARATELY).  
 ⚠ ALL CONNECTOR/STRAIN RELIEF COMPONENTS TO BE  
 SHIPPER LOOSE AND UNASSEMBLED.  
 ⚠ CATALOG NUMBER MARKED HERE.  
 ⚠ CONTAINS NO TIN-LEAD PLATING.



2M60FCL	1776644-1
2M60FC	3-1437684-3
CATALOG NUMBER	PART NUMBER

THIS DRAWING IS A CONTROLLED DOCUMENT.

DIMENSIONS:	TOLERANCES UNLESS OTHERWISE SPECIFIED:	DWN	M.S. FEHER	02APR2004	 Tyco Electronics Corporation Harrisburg, PA 17105-3608
INCHES	0 PLG ± -	CHK	S. YODER	02APR2004	
	1 PLG ± .1	APP'D	S. YODER	02APR2004	
	2 PLG ± .01	NAME	S. YODER	02APR2004	
	3 PLG ± -	PRODUCT SPEC			2M60FC ASSEMBLY
	4 PLG ± -	APPLICATION SPEC			
	ANGLES ± -	SIZE	CAGE CODE	DRAWING NO	RESTRICTED TO
MATERIAL	FINISH	WEIGHT	A1	00779	3-1437684-3
		CUSTOMER DRAWING	SCALE	NTS	SHEET 1 OF 1