

THIS DRAWING IS A CONTROLLED DOCUMENT.

-	-	-	189	-	-	-	124	-	-	-	59	
-	-	-	188	-	-	-	123	-	-	-	58	
-	-	-	187	-	-	-	122	-	-	-	57	
1	22294-6	ELBOW, TUBING .12NPT-.25T	186	-	-	-	121	-	-	-	56	
25"	27319-4	TUBING, POLY-FLO .25 DIA	185	-	-	-	120	-	-	-	55	
-	-	-	184	-	-	-	119	1	22733-7	SCR., BHC, NYLOK 8-32 .38	54	
-	-	-	183	-	-	-	118	1	819404-1	ANVIL	53	
3	2-21000-6	SCR., SHC 8-32 X .38	182	-	-	-	117	2	2-21000-1	SCR., SHC. 6-32 X .62	52	
-	-	-	181	-	-	-	116	1	819396-1	PLATE, REAR SHEAR	51	
-	-	-	180	-	-	-	115	1	819395-1	SPACER, SHEAR PLATE, FRONT	50	
-	-	-	179	-	-	-	114	1	819403-1	PLATE, FRONT SHEAR	49	
-	-	-	178	-	-	-	113	1	844301-1	PLATE, STRIP GUIDE	48	
-	-	-	177	-	-	-	112	1	844302-1	PLATE, BASE	47	
-	-	-	176	-	-	-	111	1	844307-1	RAM	46	
-	-	-	175	-	-	-	110	2	21022-2	NUT, HEX, SELF LOCKING 8-32	45	
-	-	-	174	-	-	-	109	2	2-22281-5	SPRING, COMPRESSION	44	
-	-	-	173	-	-	-	108	2	21055-6	WASHER, PLAIN #8	43	
-	-	-	172	1	374999	PLATE, TENSION ADJUSTMENT	107	2	1-21989-5	SCR., SOC. HD. SHLD .188 X 1.25	42	
-	-	-	171	2	21018-6	NUT, HEX 8-32	106	1	819389-1	DRAG	41	
-	-	-	170	2	21078-8	SCR., SET 8-32 X .50	105	1	819419-1	MOUNT, FEED BRACKET	40	
-	-	-	169	-	-	-	104	2	21024-5	WASHER, LOCK #10	39	
-	-	-	168	-	-	-	103	4	21055-7	WASHER, PLAIN #10	38	
-	-	-	167	-	-	-	102	2	4-21000-1	SCR., SHC. 10-32 X 1.50	37	
-	-	-	166	-	-	-	101	2	3-21001-4	SCR., SHC. 3/8-16 X .88	36	
-	-	-	165	-	-	-	100	1	21001-1	SCR., SHC. 1/4-20 X .38	35	
-	-	-	164	-	-	-	99	2	21001-9	SCR., SHC. 1/4-20 X 1.75	34	
-	-	-	163	-	-	-	98	1	454485-1	HOUSING, APPLICATOR	33	
-	-	-	162	-	-	-	97	3	2-22733-8	SCR., BHC 1/4-20 X .62	32	
-	-	-	161	-	-	-	96	1	454220-1	CAP, HOUSING	31	
-	-	-	160	-	-	-	95	1	844308-1	CRIMPER, WIRE .120 "F"	30	
1	819397-1	SPACER, SHEAR PLATE, REAR	159	-	-	-	94	-	-	-	29	
1	820191-1	PLATE, HOLD DOWN	158	-	-	-	93	1	7-21002-9	SCR., BHC. 5/16-24 x 1.00	28	
2	21017-2	SCR., DRIVE #2 X .19	157	-	-	-	92	-	-	-	27	
1	461264-1	PLATE, IDENTIFICATION	156	3	2-21000-7	SCR., SHC 8-32 X .50	91	-	-	-	26	
-	-	-	155	-	-	-	90	1	456468-4	STRIPPER	25	
-	-	-	154	1	844309-1	BLADE, SLUG	89	1	22292-2	COLLAR, SHAFT .18 ID.	24	
-	-	-	153	1	844311-1	BLOCK, SHEAR	88	2	21045-6	RING, RETAINING "C"	23	
-	-	-	152	-	-	-	87	1	2-23620-9	PIN, GROOVED .250 DIA	22	
-	-	-	151	-	-	-	86	2	1-22170-8	PIN, COTTER	21	
1	23238-1	QUICK DISCONNECT	150	-	-	-	85	1	22202-4	NUT, HEX 5/16-24	20	
-	-	-	149	-	-	-	84	1	23241-6	BALL, STEEL	19	
-	-	-	148	-	-	-	83	1	690603-1	SPRING, ASSIST	18	
-	-	-	147	-	-	-	82	1	690170-1	SPRING, COMPRESSION	17	
-	-	-	146	-	-	-	81	1	23030-1	SCR., SHC. 6-32 X .25 (LOC-WEL)	16	
-	-	-	145	-	-	-	80	1	22480-5	WASHER, WAVE SPRING	15	
-	-	-	144	-	-	-	79	1	690223-1	DISC, SPACER	14	
-	-	-	143	1	21009-2	SCR., SKT. SET 1/4-20 X .25 (LOC-WEL)	78	1	690212-1	POST, RAM	13	
-	-	-	142	1	690191-1	PLUG, NYLON	77	1	6-690141-8	DISC, WIRE CRIMP	12	
-	-	-	141	1	461690-1	SPACER, MOUNT	76	1	690125-1	SHIM	11	
-	-	-	140	1	459614-1	FINGER, FEED	75	1	690124-1	WASHER, RAM	10	
-	-	-	139	-	-	-	74	1	468528-1	CYLINDER, AIR	9	
-	-	-	138	-	-	-	73	1	388639-2	ROD, GUIDE	8	
-	-	-	137	1	21024-5	WASHER, LOCK #10	72	1	461686-2	CLEVIS, FEED	7	
-	-	-	136	1	3-21000-4	SCR, SHC 10-32 x .38	71	1	461064-1	BRACKET, FEED ADJUSTMENT	6	
-	-	-	135	1	2-21002-7	SCR, BHC 10-32 x .50	70	1	376170	POSITIONER, PISTON	5	
-	-	-	134	1	455689-1	BLOCK, STRIP GUIDE ADJ	69	1	376169	SCREW, FEED ADJUSTING	4	
-	-	-	133	-	-	-	68	1	376166	BLOCK, FEED ADJUSTMENT	3	
-	-	-	132	-	-	-	67	1	376165	WASHER, CLAMP	2	
-	-	-	131	2	1-21000-8	SCR., SHC. 6-32 x .50	66	1	374112	SPRING, FEED FINGER	1	
-	-	-	130	6	2-21000-0	SCR., SHC. 6-32 X .50	65	QTY	PART NO	DESCRIPTION	ITEM NO	
-	-	-	129	2	819391-1	GUIDE, FEED PAWL	64	CRIMPING DATA				APPLICATOR WILL APPLY
-	-	-	128	2	819393-1	GUIDE, STRIP	63	PAD LTR	CRIMP HEIGHT	WIRE SIZE	WIRE STRIP LENGTH	63317
-	-	-	127	3	2-21000-5	SHC., SHC. 8-32 X .25	62	A	.071	14		63315
-	-	-	126	-	-	-	61	B	.063	16		-
REF	455755-1	GUARD ASSY	125	-	-	-	60	C	.057	18		-
QTY	PART NO	DESCRIPTION	ITEM NO	QTY	PART NO	DESCRIPTION	ITEM NO	D	NOT USED			-

- NOTES:
- 1 RECOMMENDED SPARE PARTS.
 - 2 NOT SHOWN ON ASSY
 - 3 QTY IN INCHES. TOL +/- .25 IN

REMARKS		NO	REV
APPL USED ON MACHINE PART NO		TO APPLY TERMINAL 114-2126	
CUSTOMER NAME		MACH SERIAL NO	DISTRIBUTION
ADDRESS		APPL SERIAL NO	ORIGINAL
CITY		PURCHASE ORDER	CUSTOMER COPY
		ENG APP	FIELD ENG COPY

CRIMPING DATA				APPLICATOR WILL APPLY	
PAD LTR	CRIMP HEIGHT	WIRE SIZE	WIRE STRIP LENGTH		
A	.071	14		63317	
B	.063	16		63315	
C	.057	18			
D	NOT USED				
CRIMP	SIZE	TYPE	FEED	APPL INST	
WIRE	.120	F	.755±.005	A1 8091	
INSUL					
WIRE RANGE	18-14	INSULATION RANGE		MACHINE NO	
REMARKS					
AMPOMATOR AIR FEED					

SHEET 1 OF 2

THIS DRAWING IS UNPUBLISHED. RELEASED FOR PUBLICATION BY AMP INCORPORATED. ALL RIGHTS RESERVED. COPYRIGHT 19

LOC A DIST 66

SET UP GAGE 10-1 L1319 DR 11-10-88 APP 2-1-94 J. HERRINGTON GB 8-05 J. SLUSSER C. ERISMAN REL 11-10-88 DELTRICH

AMP INCORPORATED Harrisburg, Pa.

NAME MINIATURE QUICK CHANGE APPLICATOR (C.187 AND .250 SERIES FLAG FASTON)

LOC A D NO 567288-1 REV C2

CAGE CODE 00779 CUSTOMER AND ASSEMBLY DRAWING RESTRICTED TO

THIS DRAWING IS A CONTROLLED DOCUMENT.

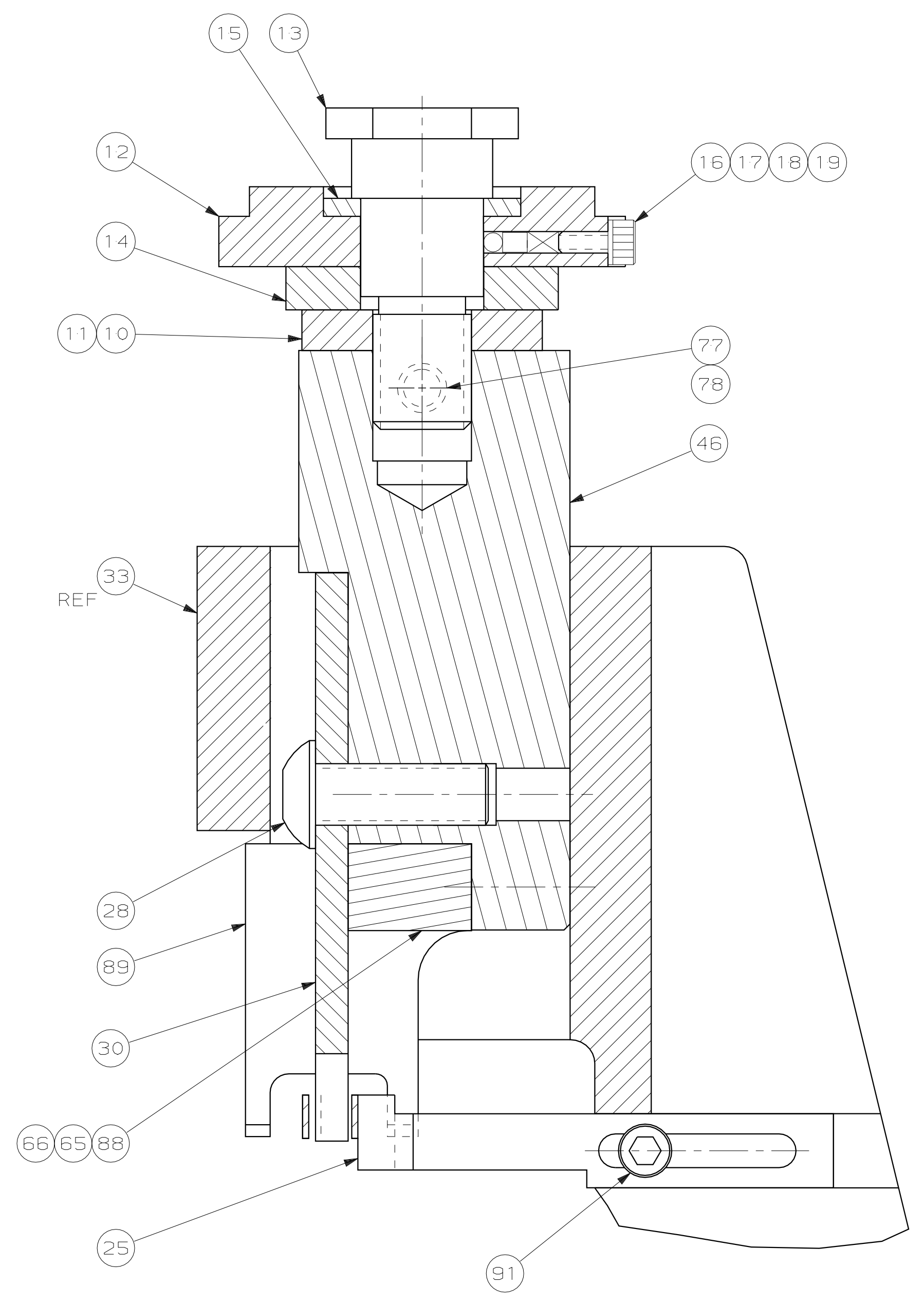
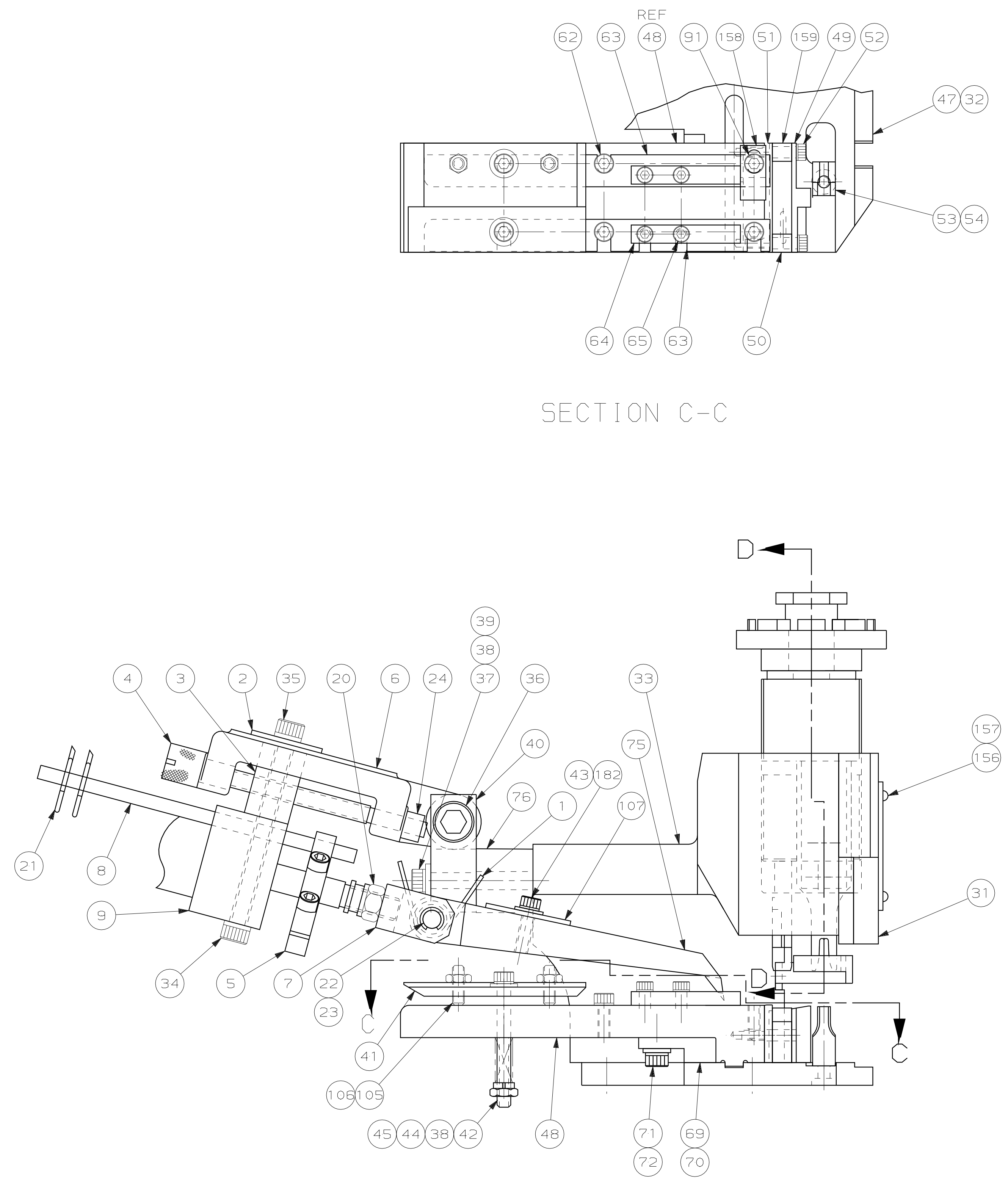
.19

RELEASED FOR PUBLICATION
BY AMP INCORPORATED. ALL RIGHTS RESERVED.

THIS DRAWING IS UNPUBLISHED.
COPYRIGHT 19

LOC
A
DIST
66

AMP 1756 REV 3-87 12-SEP-06 12:59:08 b8420



P	F	L	T	R	REVISION RECORD	APP	DATE

DWG SIZE	PART NO	DESCRIPTION	ITEM NO
		REVISION OF EACH ASSY NO (WHEN BLANK, USE DWG REVISION)	
QTY REQD PER ASSY			
PARTS LIST			
MATL	HT TR	FIN	
2 PLC DEC ± -	DR 11-10-88 APP 2-1-94		
3 PLC DEC ± -	J. HERRINGTON J. SLUSSER		
4 PLC DEC ± -	CHK 11-15-88 REL 11-15-88		
ANGLES ± -	C. ERISMAN DEITRICH		
SURF TEXTURE: ✓			
REMOVE BURRS, BREAK SHARP EDGES .015 R MAX			
SCALE 1:1	DWG NO 567288-1	SHEET 2 OF 2	REV C2
CAGE CODE 00779			
CUSTOMER AND ASSEMBLY DRAWING			
RESTRICTED TO			

SEE SHEET 1

567288-1