

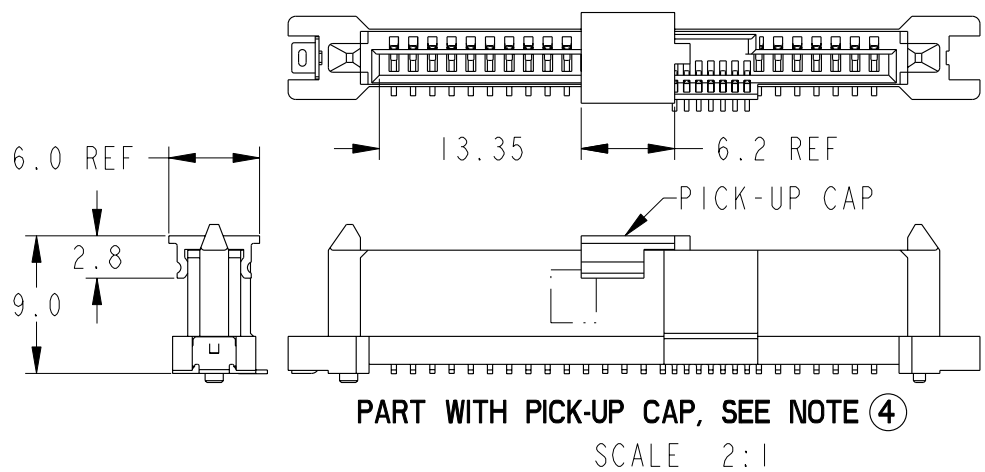
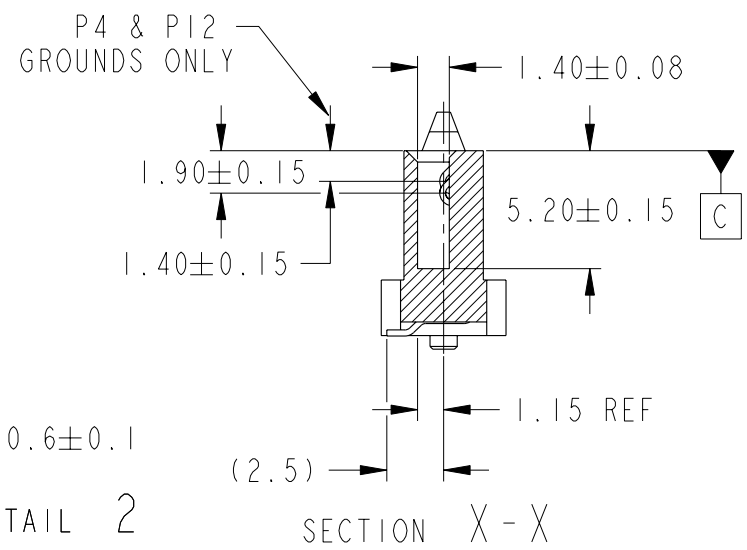
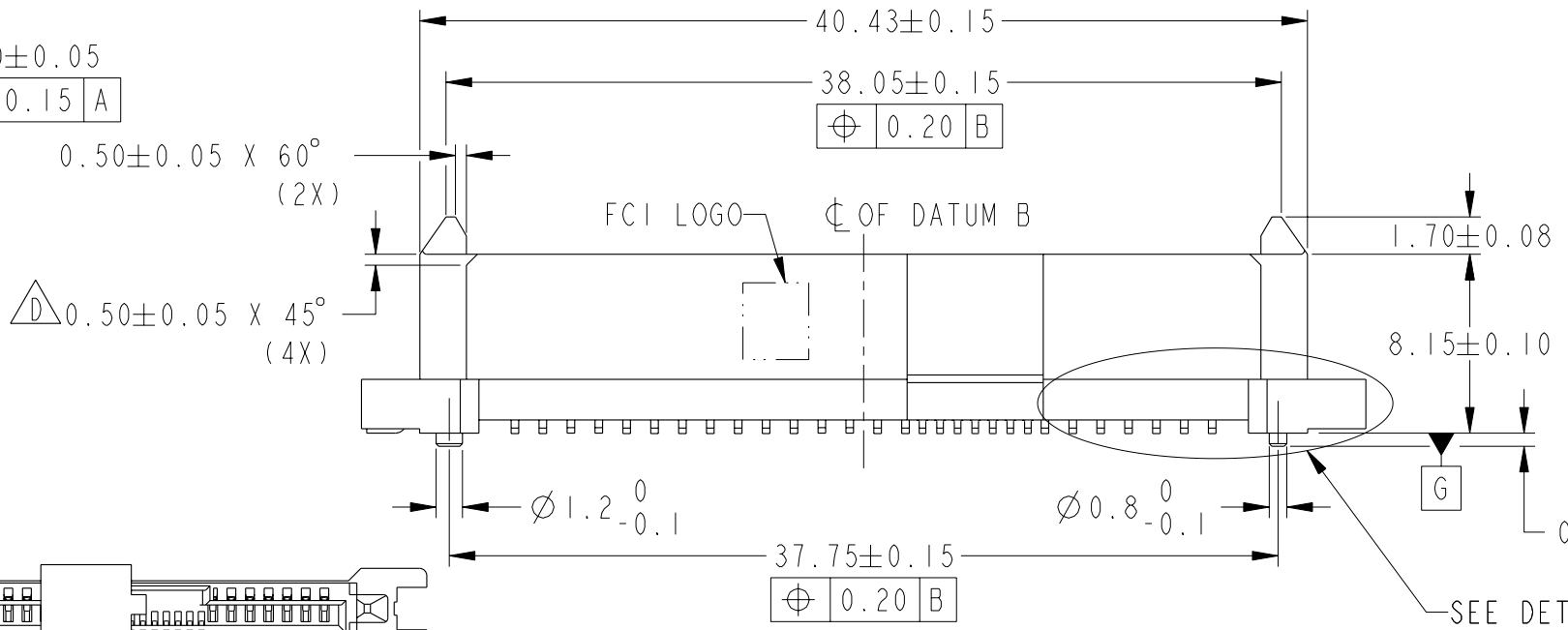
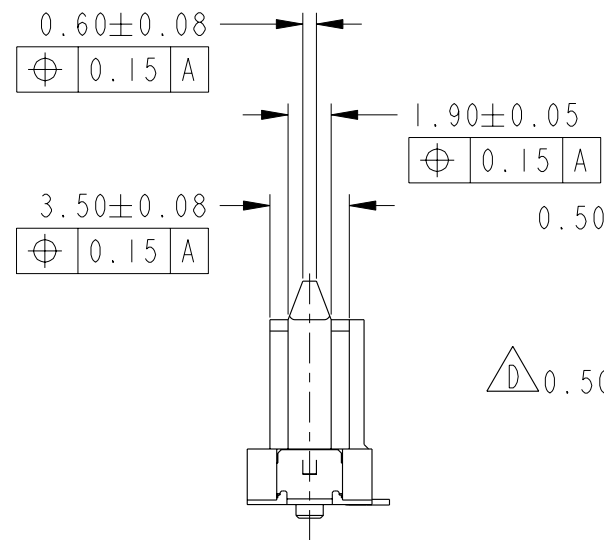
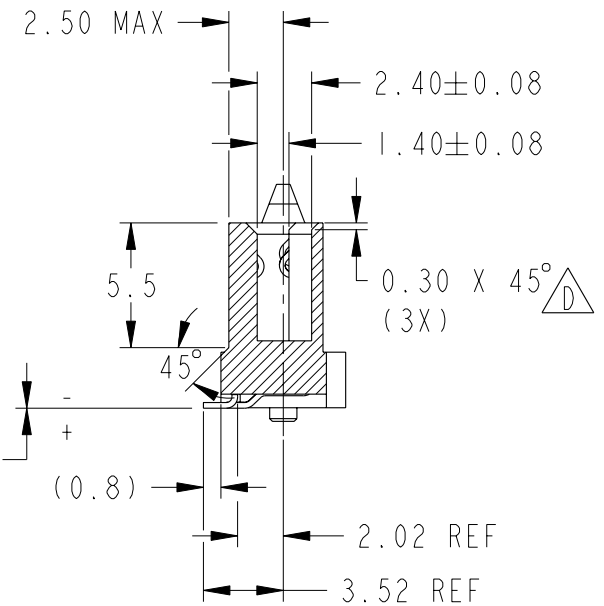
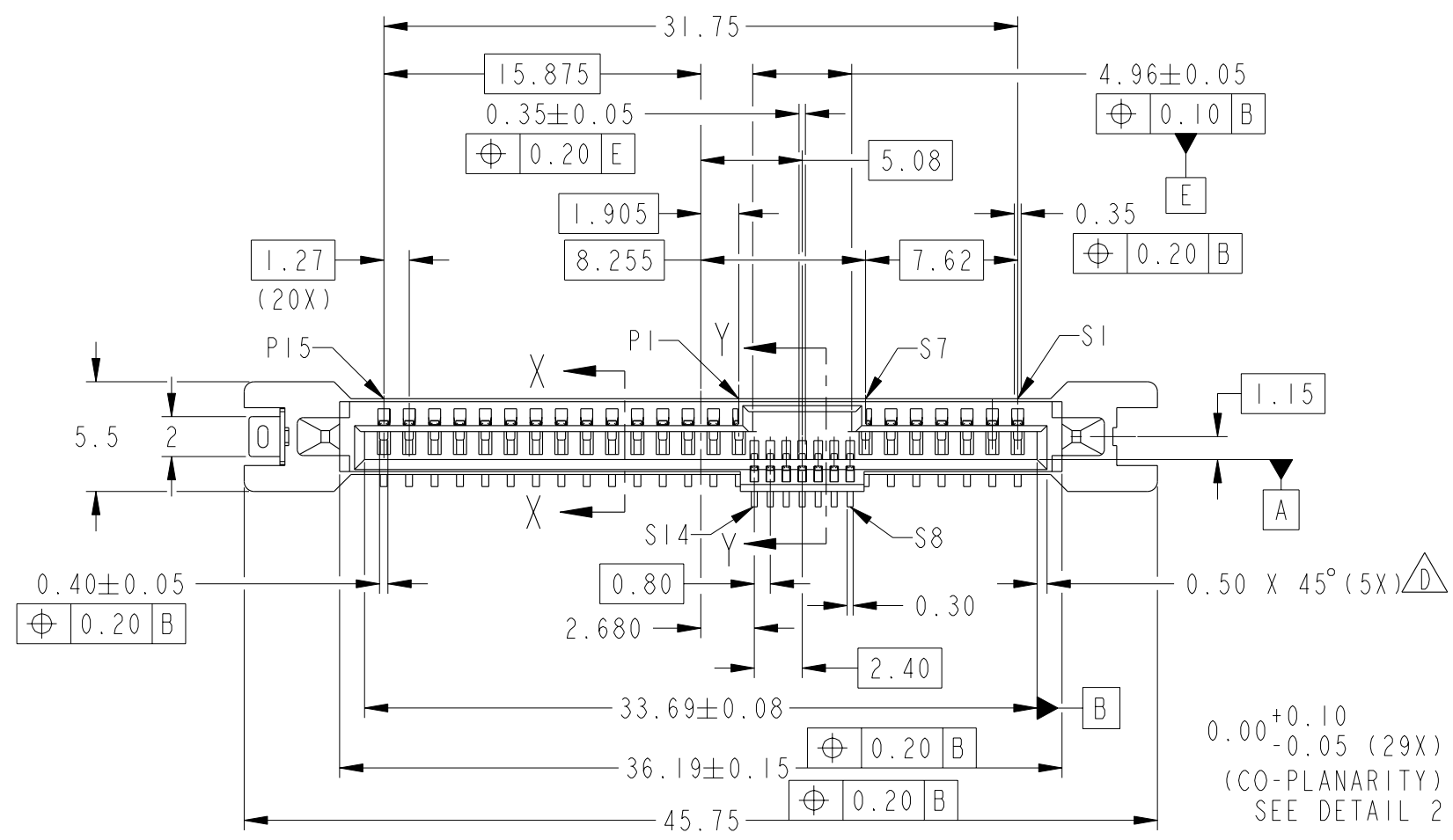
PRODUCT NO  
SEE TABLE

A

B

C

D



spec ref	-	dr	GL LOO	2009-05-04	projection	MM	size	A3	scale	3:1	
tolerance std	ISO 406 ISO 1101	eng	GL LOO	2009-05-04	⊕	←→	ecn no	S10-0228			
TOLERANCES UNLESS OTHERWISE SPECIFIED		chr	GL LOO	2010-10-28			product family	SAS	rel level	-	
surface	✓	appr	JOEY NG	2010-10-28	SEE DETAIL 2		dwg no	10101219		rev	D
ISO 1302	linear	0.X	±		www.fci.com	cat. no.	-	Product - Customer Drw	sheet 1 of 3		
	angular	0°	±2°								



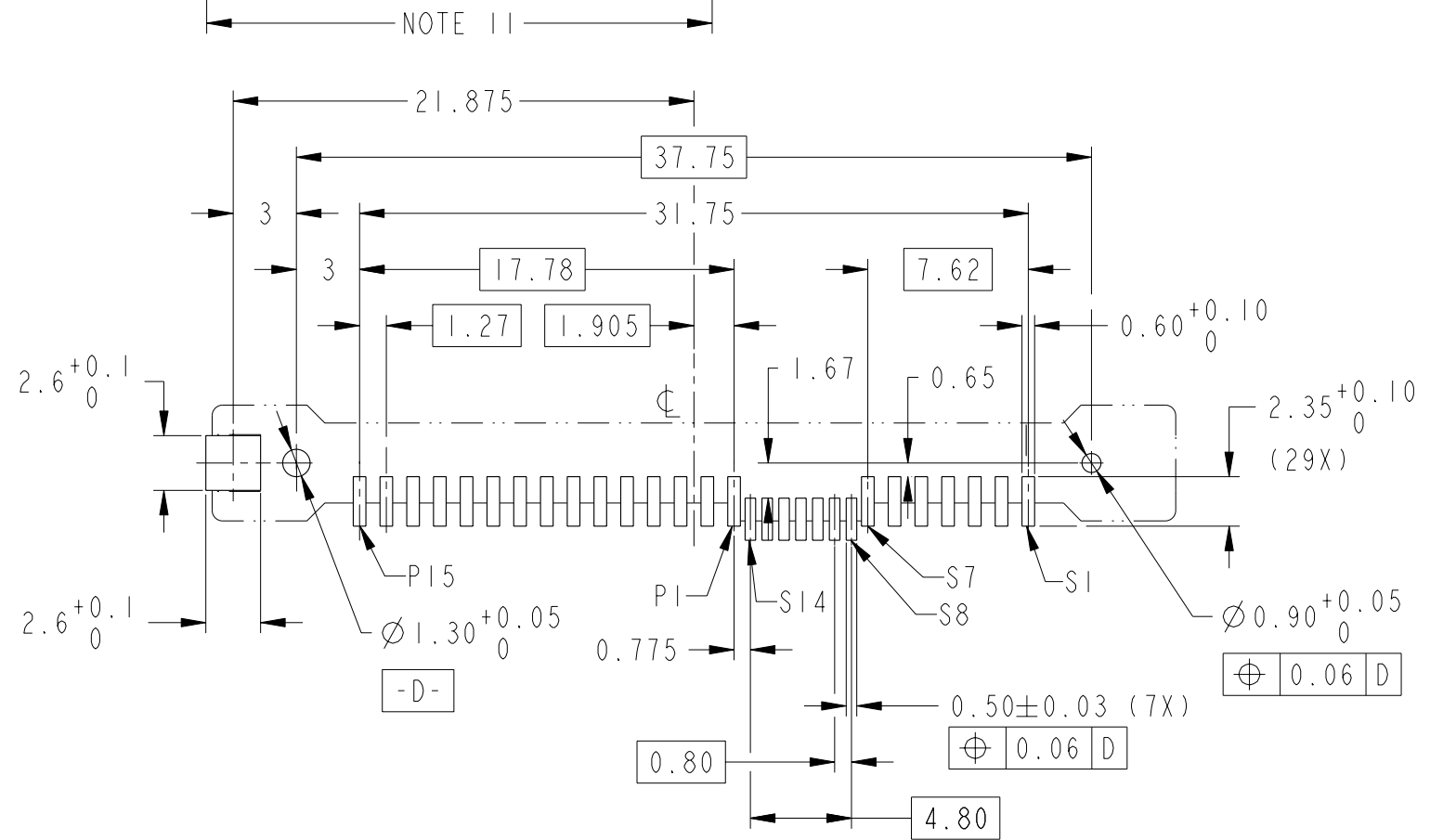
SAS RECEPACLE  
VERTICAL SMT TYPE ASSY

Copyright FCI.

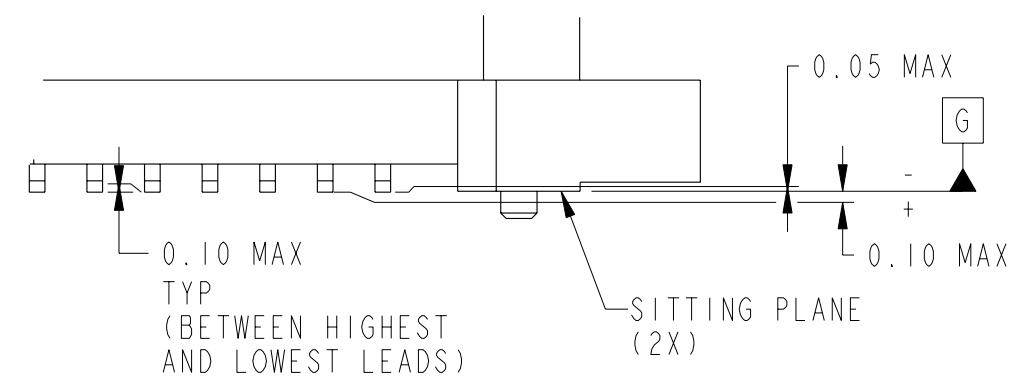
PRODUCT NO	METAL CLIP	PLATING	PICK-UP CAP	PACKAGING	REMARKS	PRODUCT NO	PLATING
10101219-001LF	1 PC	NOTE ②	NO	TRAY	NOTE ⑧	10101219-401LF	NOTE ⑪
10101219-001CLF			YES		NOTES ④ & ⑧	10101219-401CLF	
10101219-001C-TRLF			YES	TAPE & REEL	NOTES ④ ⑥ & ⑧	10101219-401C-TRLF	

NOTES:

1. MATERIAL :  
 1) HOUSING : HIGH TEMP THERMOPLASTIC, UL 94V-0, BLACK COLOR  
 2) TERMINAL : COPPER ALLOY  
 3) HOLD DOWN : COPPER ALLOY
- ② FINISH :  
 1) TERMINAL : 30μ" Au PLATING (CONTACT POINT) OVER 50μ" NICKEL  
 2) SOLDER TAIL : 100μ" MIN Sn OVER 50μ" NICKEL  
 3) HOLD DOWN : 100μ" MIN Sn OVER 50μ" NICKEL
- ③ PER SFF REV 1.1
- ④ PART WITH PICK-UP CAP, P/N XXXXXXXX-XXXX LF.
- ⑤ THE STD PACKAGING IS IN TRAY
- ⑥ FOR TAPE & REEL PACKAGING, SUFFIX "-TR" ADDED, P/N XXXXXXXX-XXXX-TR LF
7. THE HOUSING WILL WITHSTAND EXPOSURE TO 260°C PEAK TEMPERATURE FOR 10 SECONDS IN A CONVECTION, INFRA-RED OR VAPOR PHASE REFLOW OVEN.
- ⑧ THIS PRODUCT MEETS EUROPEAN UNION DIRECTIVES AND OTHER COUNTRY REGULATIONS AS DESCRIBED IN GS-22-008.
- ⑨ PART NUMBERS ENDING IN "LF" MEANS FOR NOTE 8 LEAD FREE IDENTIFICATION
10. A  $\triangle$  D SYMBOL WILL BE NEXT TO ANY DIMENSION, VIEW, OR NOTE WHICH HAS BEEN MODIFIED WITH THE CURRENT DRAWING REVISION.
- ⑪ FINISH :  
 1) TERMINAL : 15μ" GXT PLATING (CONTACT POINT) OVER 50μ" NICKEL  
 2) SOLDER TAIL : 100μ" MIN Sn OVER 50μ" NICKEL  
 3) HOLD DOWN : 100μ" MIN Sn OVER 50μ" NICKEL



RECOMMENDED PCB LAYOUT



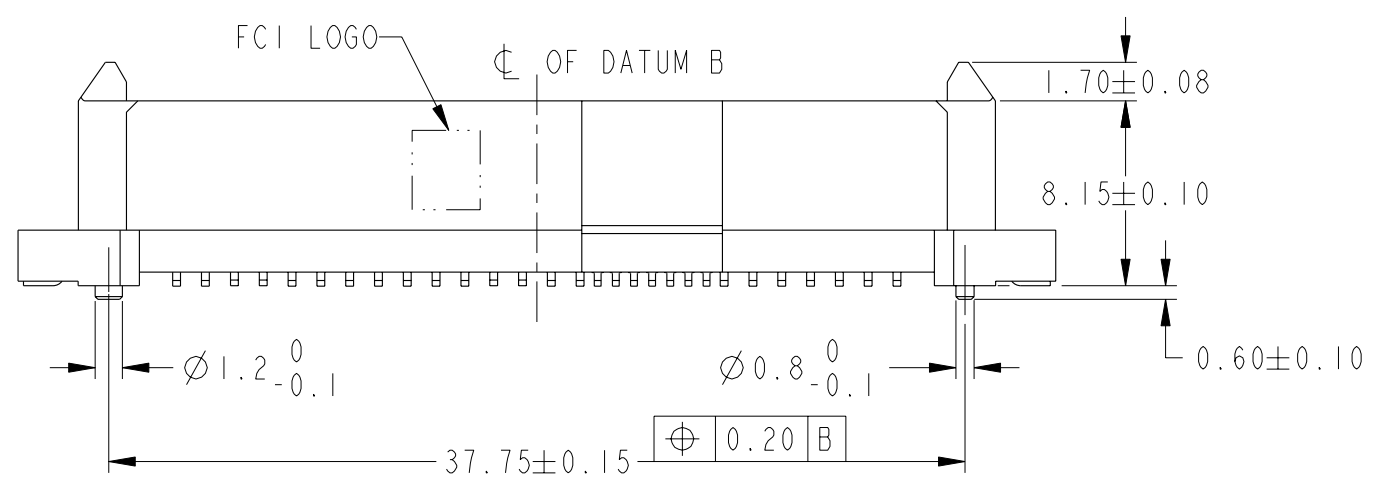
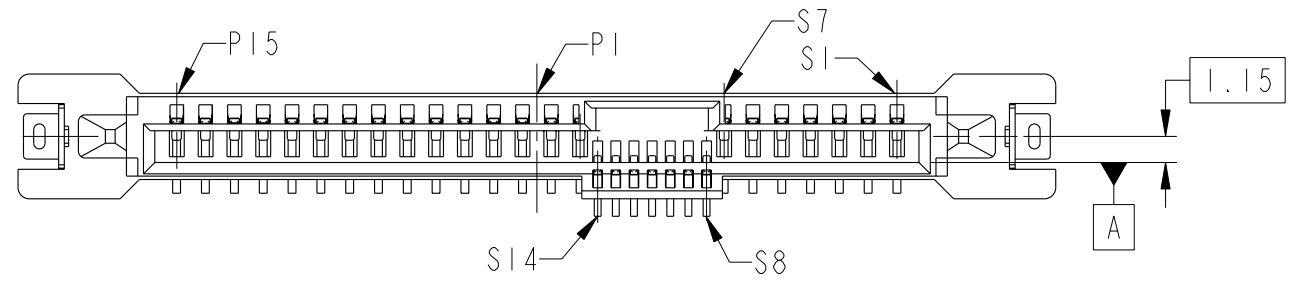
DETAIL 2  
SCALE 6:1

spec ref	-	dr	GL LOO	2009-05-04	projection	MM	size	A3	scale	3:1
tolerance std	ISO 406 ISO 1101	eng	GL LOO	2009-05-04			ecn no	S10-0228	rel level	-
TOLERANCES UNLESS OTHERWISE SPECIFIED		chr	GL LOO	2010-10-28						
surface	ISO 1302	appr	JOEY NG	2010-10-28					-	
	linear	0.X	±						-	
		0.XX	±0.20						-	
		0.XXX	±						-	
	angular	0°	±2°						-	
www.fci.com		SAS RECEPTACLE			cat. no.		-		Product - Customer Drw	
		VERTICAL SMT TYPE ASSY			dwg no		10101219		rev	
					-		-		D	
					-		-		sheet 2 of 3	

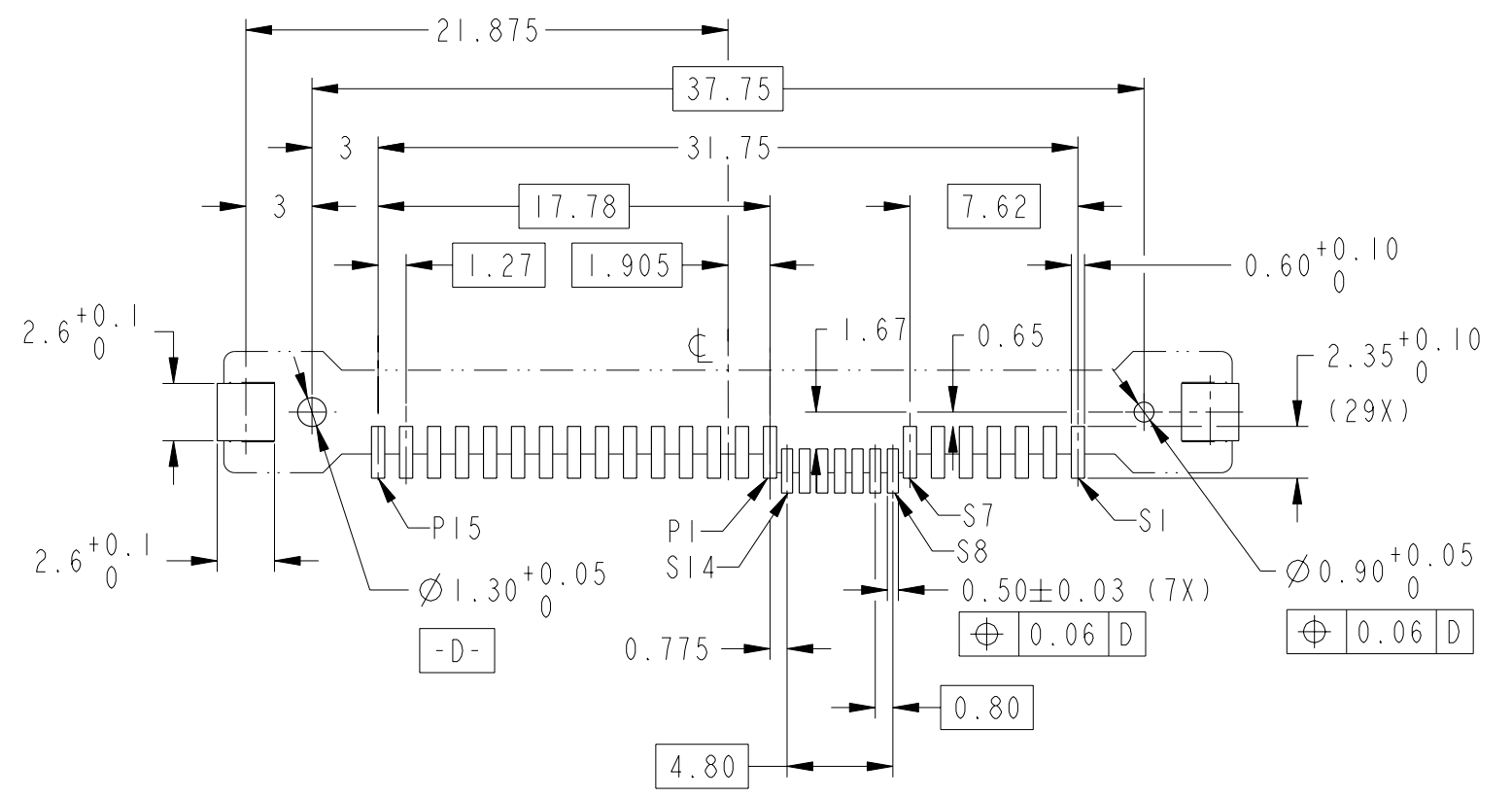


PRODUCT NO	METAL CLIP	PLATING	PICK-UP CAP	PACKAGING	REMARKS	PRODUCT NO	PLATING
10101219-002LF	2 PCS	NOTE ②	NO	TRAY	NOTE ⑧	10101219-402LF	NOTE ⑪
10101219-002CLF			YES		NOTES ④ & ⑧	10101219-402CLF	
10101219-002C-TRLF			YES		NOTES ④ ⑥ & ⑧	10101219-402C-TRLF	

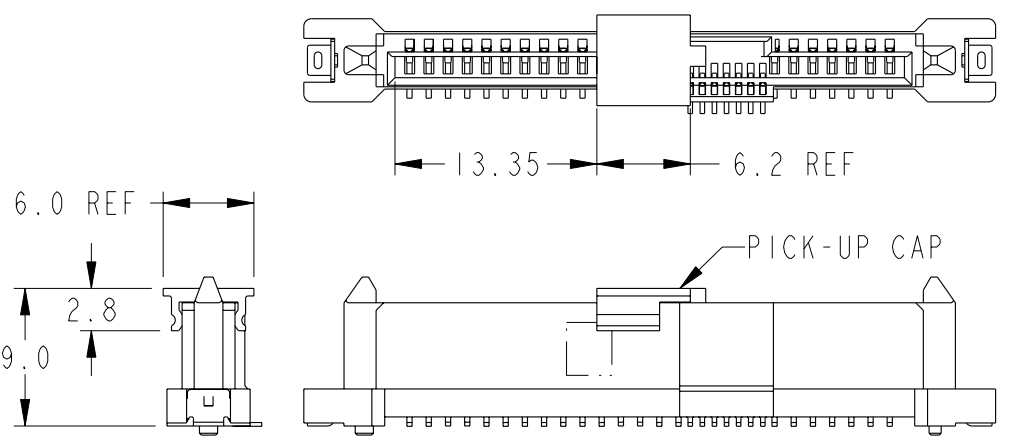
NOTE 11



NOTES:  
ALL OTHER DIMENSIONS, REFER TO SHEET 1.



RECOMMENDED PCB LAYOUT



PART WITH PICK-UP CAP, SEE NOTE ④

SCALE 2:1

spec ref	-	dr	GL LOO	2009-05-04	projection	MM	size	A3	scale	3:1
tolerance std	ISO 406 ISO 1101	eng	GL LOO	2009-05-04			ecn no	S10-0228		
TOLERANCES UNLESS OTHERWISE SPECIFIED		chr	GL LOO	2010-10-28			product family	SAS	rel level	-
surface	ISO 1302	appr	JOEY NG	2010-10-28	SAS RECEPTACLE VERTICAL SMT TYPE ASSY			dwg no	10101219	
linear	0.X ± 0.XX ±0.20 0.XXX ±	www.fci.com			cat. no.	-	Product - Customer Drw	rev	D	
angular	0° ±2°	www.fci.com			Product - Customer Drw			sheet 3 of 3		

Copyright FCI.