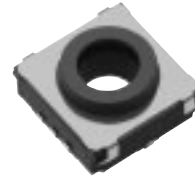


10 mm Square Center Space Long Travel SMD Light Touch Switches

Type: **EVPAD**



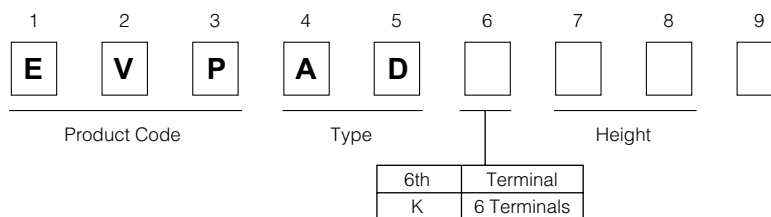
■ Features

- The open center space allows for flexibility in choosing a LED
Up to a 4.2-mm diameter chip LED can be mounted.
- Provides an excellent operational feel.
 - Crisp tactile feedback
 - Long stroke (1 mm)
- Supports auto reflow soldering.

■ Recommended Applications

- Control switches for automotive electronic equipment,
such as car audio systems and heater control panels

■ Explanation of Part Numbers



■ Specifications

| | | |
|-------------------------------|---------------------------------|--|
| Type | | Snap action/Push-on type SPST |
| Electrical | Rating | 10 μ A 2 Vdc to 50 mA 12 Vdc (Resistive load) |
| | Contact Resistance | 100 m Ω max. |
| | Insulation Resistance | 100 M Ω min. (at 100 Vdc) |
| | Dielectric Withstanding Voltage | 250 Vac for 1 minute |
| | Bouncing | 10 ms max. (ON, OFF) |
| Mechanical | Operating Force | 4.0 N \pm 0.8 N |
| | Travel | 1.0 mm \pm 0.15 mm |
| Endurance | Operating Life | 100000 cycles min. |
| Operating Temperature | | -40 °C to +85 °C |
| Storage Temperature | | -40 °C to +85 °C (Bulk) -20 °C to +60 °C (Taping) |
| Minimum Quantity/Packing Unit | | 1000 pcs. Embossed Taping (Reel Pack) |
| Quantity/Carton | | 5000 pcs. |

