

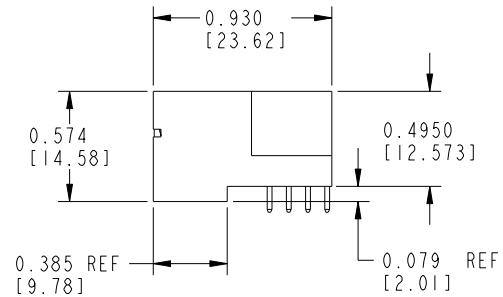
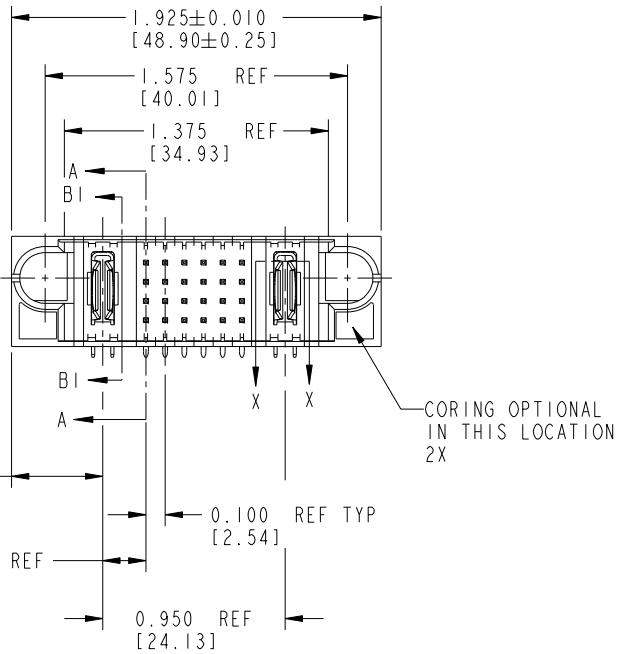
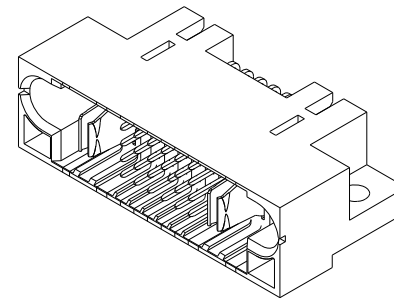
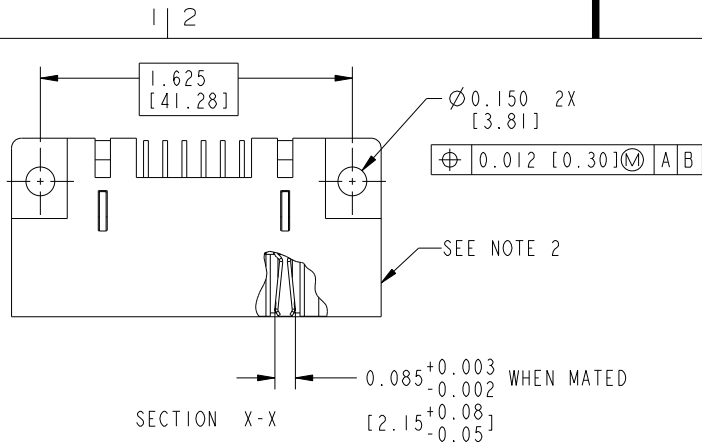
Tous droits strictement réservés. Reproduction ou communication a des tiers interdite sous quelque forme que ce soit sans autorisation écrite du propriétaire. Propriété de c FCI. Droits de reproduction FCI.

All rights strictly reserved. Reproduction or issue to third parties in any form whatever is not permitted without written authority from the proprietor. Property of FCI. Copyright FCI.



PRODUCT NUMBER

51415-00X--
SEE NOTE: 3



mat'l code				SEE NOTES		tolerances unless otherwise specified		CUSTOMER		 www.fciconnect.com	
ltr	ecn no.	dr	date	linear	.XX±.01/.X±.3		COPY		title		
K	DG05-0064	SW	3/30/05		.XXX±.005/.X±.13		projection		IP + 24S + IP		
L	DG05-0435	SW	11/03/05	angles	.XXX±.0020/.XXX±.051		 INCH/MM		Right Angle Solder Header		
M	DG08-0237	W D	09/01/08		0°±2°		scale		product family		code
N	DG08-0272	W D	09/25/08	dr	C. BAROT	01-12-99	1:1		PWRBLADE		213
				enrg	J. BROWN	01-12-99			size		sheet
				chr	J. BROWN	01-12-99			A		1 of 5
				appd	J. BROWN	01-12-99			51415		
sheet index		revision sheet		N	N	N	N				
		1 2		3	4	5					

Pro/E

PDM: Rev: N

STATUS: Released

Printed: Dec 20, 2010

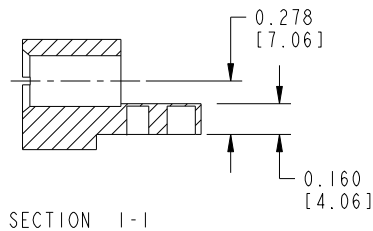
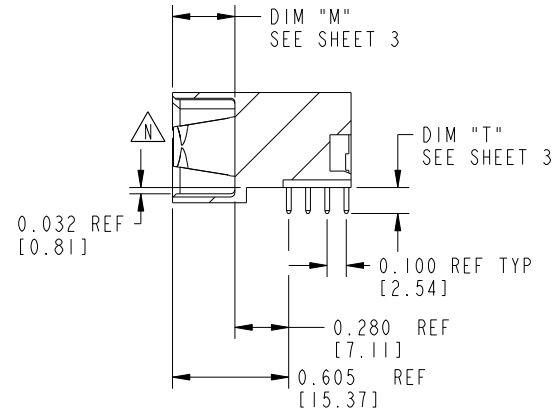
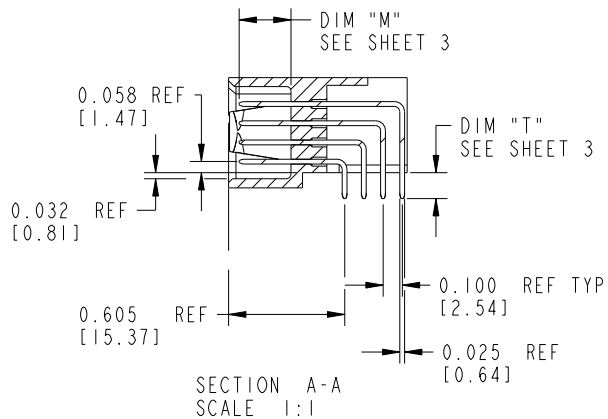
cage code 22526

Tous droits strictement réservés. Reproduction ou communication a des tiers interdite sous quelque forme que ce soit sans autorisation écrite du propriétaire. Propriété de c FCI. Droits de reproduction FCI.

All rights strictly reserved. Reproduction or issue to third parties in any form whatever is not permitted without written authority from the proprietor. Property of FCI. Copyright FCI.



PRODUCT NUMBER
51415-00X__



mat'l code		SEE NOTES		tolerances unless otherwise specified		CUSTOMER		 www.fciconnect.com	
lfr	ecn no.	dr	date	linear	.XX±.01/0.X±0.3	COPY		title	
N					.XXX±.005/0.XX±0.13	projection		IP + 24S + IP	
					.XXX±.0005/0.XXX±.051			Right Angle Solder Header	
				angles	0°±2°	INCH/MM		product family	
				dr	C. BAROT 01-12-99	scale		PWRBLADE	
				enrg	J. BROWN 01-12-99	1:1		code	
				chr	J. BROWN 01-12-99	A		213	
				appd	J. BROWN 01-12-99	51415		sheet	
sheet index		revision sheet						2 of 5	

Pro/E

PDM: Rev: N

STATUS: Released

Printed: Dec 20, 2010

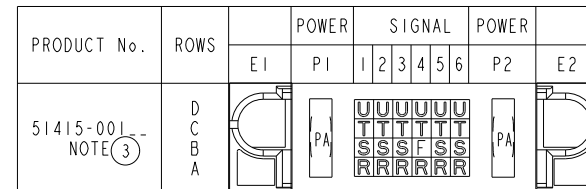
Tous droits strictement réservés. Reproduction ou communication a des tiers interdite sous quelque forme que ce soit sans autorisation écrite du propriétaire. Propriété de c FCI. Droits de reproduction FCI.



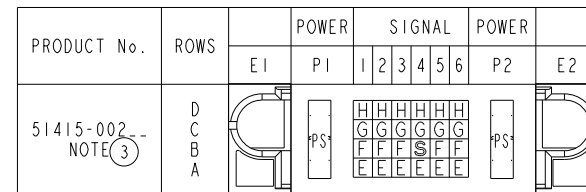
All rights strictly reserved. Reproduction or issue to third parties in any form whatever is not permitted without written authority from the proprietor. Property of FCI. Copyright FCI.

PRODUCT NUMBER
51415-00X__

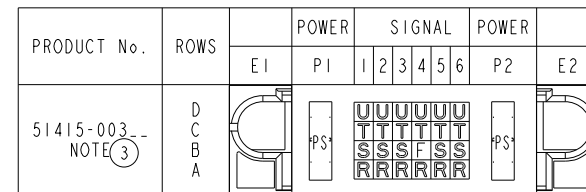
ITEM NO.	QTY	DIM "M" MATING LENGTH ±.010		DIM "T" TAIL LENGTH ±.020		CONTACT TYPE
PA	2	N/A	[N/A]	0.135	[3.43]	POWER
F	1	0.220	[5.59]	0.135	[3.43]	SIGNAL
R	6	0.270	[6.86]	0.135	[3.43]	SIGNAL
S	5	0.270	[6.86]	0.135	[3.43]	SIGNAL
T	6	0.270	[6.86]	0.135	[3.43]	SIGNAL
U	6	0.270	[6.86]	0.135	[3.43]	SIGNAL



ITEM NO.	QTY	DIM "M" MATING LENGTH ±.010		DIM "T" TAIL LENGTH ±.020		CONTACT TYPE
PS	2	N/A	[N/A]	0.135	[3.43]	POWER
E	6	0.220	[5.59]	0.135	[3.43]	SIGNAL
F	5	0.220	[5.59]	0.135	[3.43]	SIGNAL
G	6	0.220	[5.59]	0.135	[3.43]	SIGNAL
H	6	0.220	[5.59]	0.135	[3.43]	SIGNAL
S	1	0.270	[6.86]	0.135	[3.43]	SIGNAL



ITEM NO.	QTY	DIM "M" MATING LENGTH ±.010		DIM "T" TAIL LENGTH ±.020		CONTACT TYPE
PS	2	N/A	[N/A]	0.135	[3.43]	POWER
F	1	0.220	[5.59]	0.135	[3.43]	SIGNAL
R	6	0.270	[6.86]	0.135	[3.43]	SIGNAL
S	5	0.270	[6.86]	0.135	[3.43]	SIGNAL
T	6	0.270	[6.86]	0.135	[3.43]	SIGNAL
U	6	0.270	[6.86]	0.135	[3.43]	SIGNAL



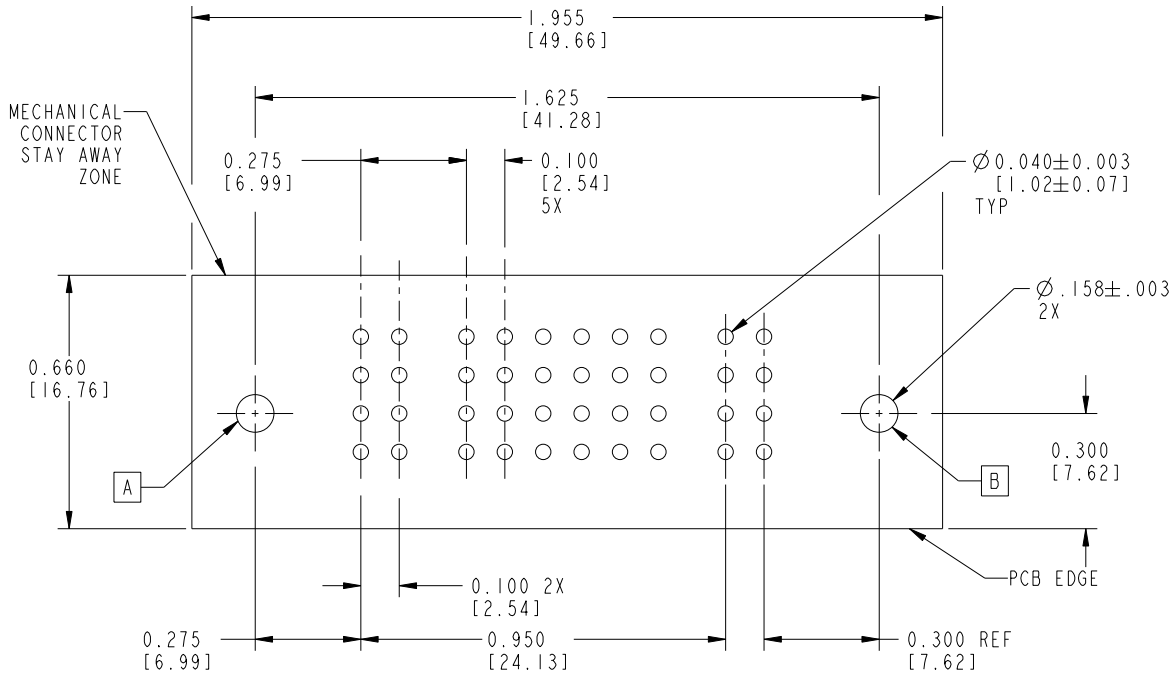
mat'l code		SEE NOTES		tolerances unless otherwise specified		CUSTOMER		FCI	
lir	ecn no.	dr	date	linear	.XX±.01/0.X±0.3	COPY	www.fciconnect.com		
N				angles	.XXX±.005/0.XX±0.13 .XXX±.0005/0.XXX±.051	projection	title		IP + 24S + IP
				dr	0°±2°		Right Angle Solder Header		
				enrg	C. BAROT 01-12-99	INCH/MM	product family		PWRBLADE
				chr	J. BROWN 01-12-99	scale	size		213
				appd	J. BROWN 01-12-99	1:1	dwg no		51415
sheet index	revision sheet						code		3 of 5

Tous droits strictement réservés. Reproduction ou communication a des tiers interdite sous quelque forme que ce soit sans autorisation écrite du propriétaire. Propriété de c FCI. Droits de reproduction FCI.



All rights strictly reserved. Reproduction or issue to third parties in any form whatever is not permitted without written authority from the proprietor. Property of FCI. Copyright FCI.

PRODUCT NUMBER
51415-00X__



SCALE 2:1

RECOMMENDED PCB LAYOUT

mat'l code		SEE NOTES		tolerances unless otherwise specified		CUSTOMER		FCI	
ltr	ecn no.	dr	date	linear	.XX±.01/0.X±0.3	COPY		www.fciconnect.com	
N				angles	.XXX±.005/0.XX±0.13	projection		title IP + 24S + IP	
				dr	.XXX±.0005/0.XXX±.051	INCH/MM		Right Angle Solder Header	
				enrg	0°±2°	scale		product family PWRBLADE	
				chr		1:1		code 213	
				appd		A		size 51415	
sheet index	revision sheet							sheet 4 of 5	

Pro/E

PDM: Rev: N

STATUS: Released

Printed: Dec 20, 2010

PRODUCT NUMBER
51415-00X__

NOTES:

1. DIMENSIONS AND TOLERANCES ARE IN ACCORDANCE WITH ASME Y14.5M, 1994 UNLESS OTHERWISE SPECIFIED.

CONNECTOR NOTES:

2. HOUSING MATERIAL: UL 94 V-0 GLASS FILLED HIGH-TEMP THERMOPLASTIC
POWER CONTACT MATERIAL: COPPER ALLOY
SIGNAL PIN MATERIAL: COPPER ALLOY

 3. SEE ITEM 1 & 2 IN PRINT 10064183 FOR PLATING SPEC OF 51415-00X AND 51415-00XLF RESPECTIVELY.

4. MANUFACTURER'S NAME, P/N, AND DATE CODE TO APPEAR ON THIS SURFACE.

5. PRODUCT SPECIFICATION GS-12-149.
APPLICATION SPECIFICATION BUS-20-067.

PCB NOTES:

6. ALL HOLE DIAMETERS ARE FINISHED HOLE SIZE.


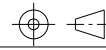
7. MOUNTING HOLES, WHERE APPLICABLE, ARE UNPLATED.

8. $\varnothing .0453 \pm 0.0010$ [1.151 ± 0.025] DRILLED HOLES PLATED WITH
.0003 [0.008] MIN SnPb OVER .001 [0.03]
TO .003 [0.08] Cu PLATING TO ACHIEVE
 $\varnothing .040 \pm .003$ [$1.02 \pm .07$] HOLE.

9. "DIM XXX" TO BE DETERMINED BY THE CUSTOMER.

10. CONNECTOR KEEP-OUT ZONE.

11. A  SYMBOL WILL BE NEXT TO ANY DIMENSION, VIEW, OR NOTE WHICH HAS BEEN MODIFIED WITH THE CURRENT DRAWING REVISION.

mat'l code		SEE NOTES		tolerances unless otherwise specified		CUSTOMER					
lfr	ecn no.	dr	date	linear	.XX±.01/0.X±0.3		COPY		www.fciconnect.com		
N					.XXX±.005/0.XX±0.13		projection		title		
				angles	.XXX±.0005/0.XXX±.051				IP + 24S + 1P Right Angle Solder Header		
					0°±2°		INCH/MM		product family		
				dr	C. BAROT	01-12-99	scale		PWRBLADE		
				enrg	J. BROWN	01-12-99	1:1		code		
				chr	J. BROWN	01-12-99	A		size		
				appd	J. BROWN	01-12-99	51415		sheet		
sheet index		revision sheet						5 of 5			

Tous droits strictement réservés. Reproduction ou communication a des tiers interdite sous quelque forme que ce soit sans autorisation écrite du propriétaire. Propriete de c FCI. Droits de reproduction FCI.



All rights strictly reserved. Reproduction or issue to third parties in any form whatever is not permitted without written authority from the proprietor. Property of FCI. Copyright FCI.