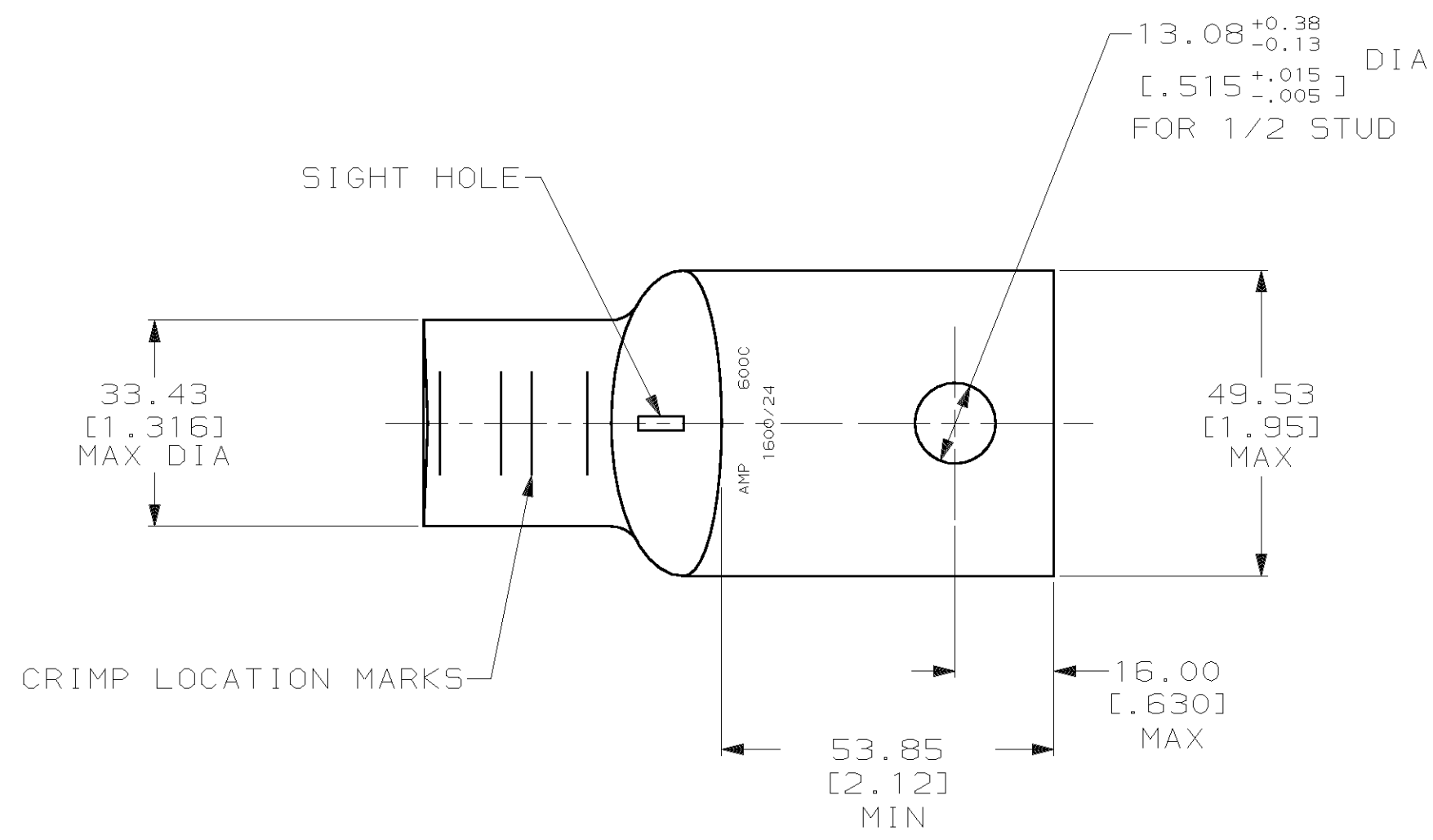
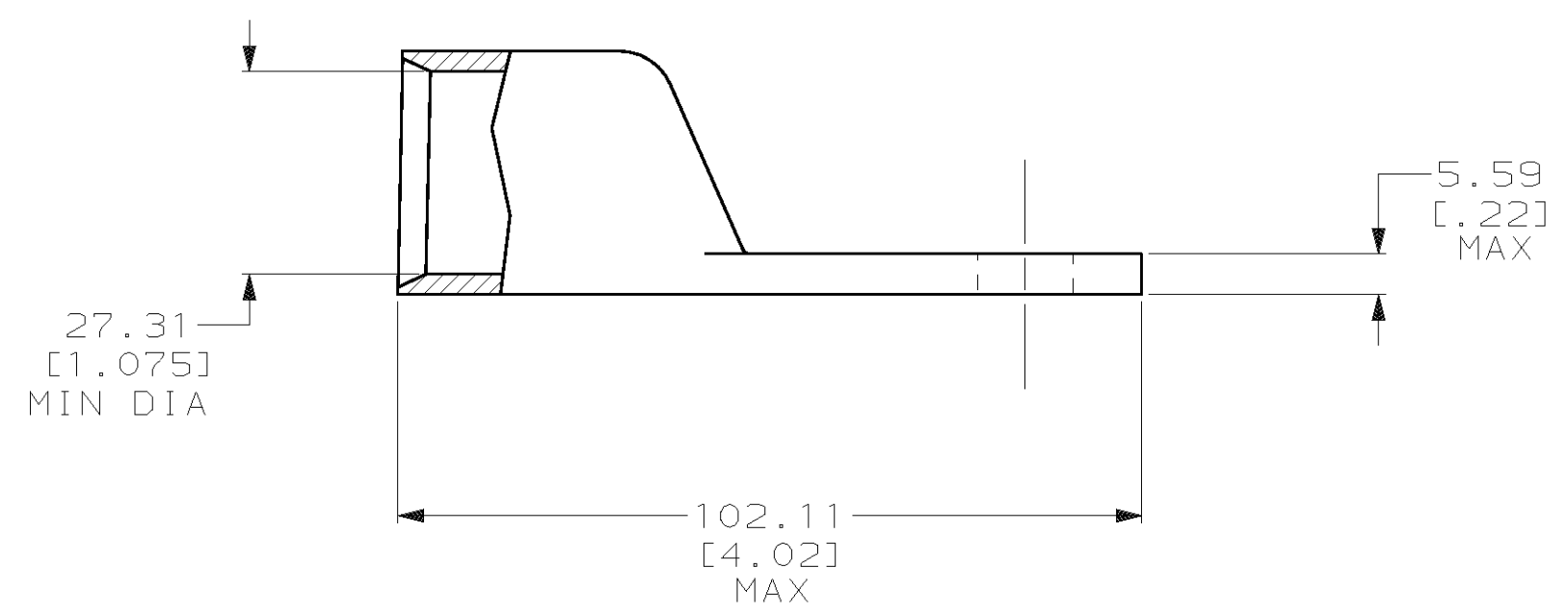


THIS DRAWING IS UNPUBLISHED. RELEASED FOR PUBLICATION, 19 .
 © COPYRIGHT 19 BY AMP INCORPORATED. ALL INTERNATIONAL RIGHTS RESERVED.

LOC		DIST		REVISIONS				DATE	APPD
G	86	P	F	ZONE	LTR	DESCRIPTION	JR/MS	07OCT02	
				A		REV PE R0G3A-0561-01			



1 CIRCULAR MIL RANGE: 550-650 MCM



THIS DRAWING IS A CONTROLLED DOCUMENT FOR AMP INCORPORATED. IT IS SUBJECT TO CHANGE AND THE CONTROLLING ENGINEERING ORGANIZATION SHOULD BE CONTACTED FOR THE LATEST REVISION.

		55842-1	
		PART NO	
DO NOT SCALE PRINT. UNLESS SPECIFIED DIMENSIONS IN mm [INCHES] TOLERANCES ON : 2 PLC DEC ± 0.50 [.020] 3 PLC DEC ± - ANGLES ± -		DR 7/21/92 DK SCHRUM	AMP Incorporated Harrisburg, PA 17105-3608
MATERIAL COPPER ASTM B-75 ANNEALED		CHK 7/21/92 AJ KAUFMAN	
FINISH TIN PLATE 0.00254 [.000100] MIN THK PER MIL-T-10727		APPD 7/21/92 WJ VOCKROTH	NAME TERMINAL, RECTANGULAR TONGUE, AMPOWER, WIRE SIZE: 304.0mm ² [600] MCM
THIS DRAWING IS A CONTROLLED DOCUMENT FOR AMP INCORPORATED. IT IS SUBJECT TO CHANGE AND THE CONTROLLING ENGINEERING ORGANIZATION SHOULD BE CONTACTED FOR THE LATEST REVISION.		APPD 7/21/92 CR RHOADS	SIZE C 00779
		PRODUCT SPEC -	DRAWING NO C=55842
		APPLICATION SPEC -	SCALE 1:1
		WEIGHT -	SHEET 1 OF 1