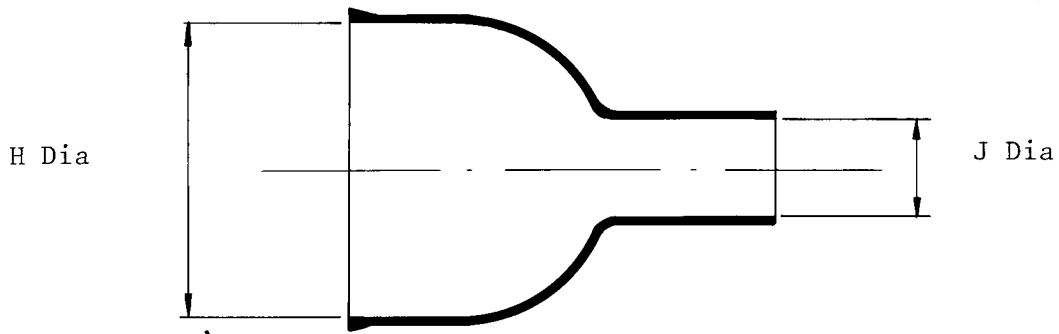
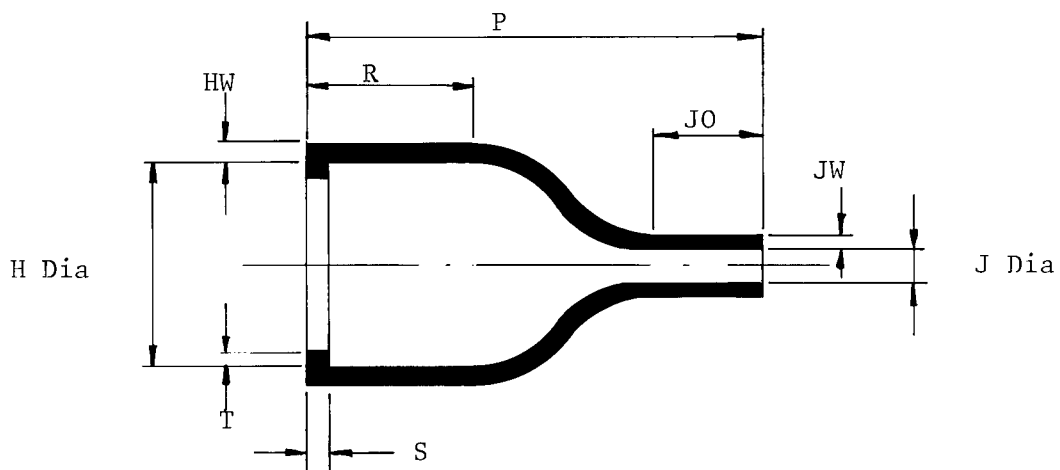


a. Part as supplied



b. Part after unrestricted recovery



DIMENSIONS (IN MILLIMETRES)

| Part Number | H | | J | | P | R | S | T | JO | HW | JW |
|-------------------|----------|----------|----------|----------|-----------|-----------|-----------|-----------|-----------|-----------|-----------|
| | Min a | Max b | Min a | Max b | +10% b | Ref. b | Ref. b | Ref. b | +10% b | +20% b | +20% b |
| 202D921 -3-G01 | 19 | 13 | 6,0 | 2,1 | 30 | 12 | 3,0 | 1,0 | 7,4 | 1,5 | 1,1 |

Issued by

J. West

Issue 1

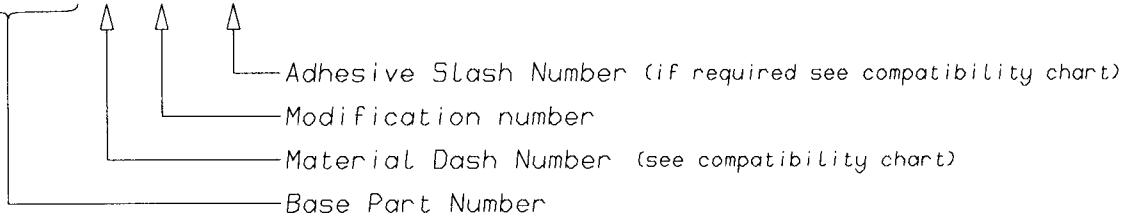
Date FEBRUARY 1978

Approved by

S. D. Smith
J. West

Ordering Information

202D963-*G13/**-0



COMPATIBILITY CHART

| MATERIAL DASH NUMBER | MATERIAL DESCRIPTION | COATING SLASH NUMBER |
|----------------------|----------------------------|----------------------|
| -3 | POLYOLEFIN, SEMI-RIGID | /42, /86 |
| -4 | POLYOLEFIN, FLEXIBLE | /42, /86 |
| -25 | ELASTOMER, FLUID RESISTANT | /86, /225 |
| | | |
| | | |
| | | |

AS SUPPLIED DIMENSIONS ARE FOR UNCOATED PARTS, ,
 WHEN COATING IS ADDED, ENTRY DIAMETERS WILL REDUCE BY 1.5mm MAX.