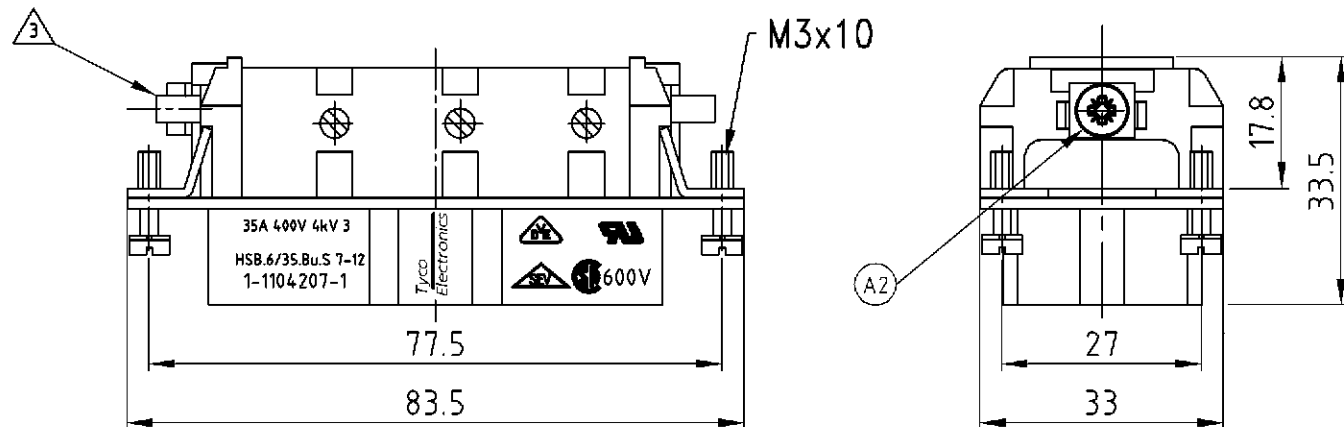
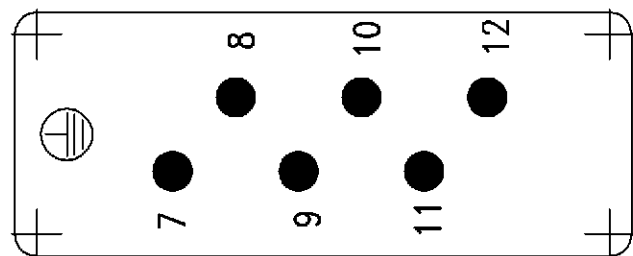


LOC	DIST	REVISIONS ÄNDERUNGEN		
A1	-	P	LTR	DATE
PROJEKT NR.:		A2		Notes and design corrected ECR-06-020881
				29.08.06
				SR
				SR

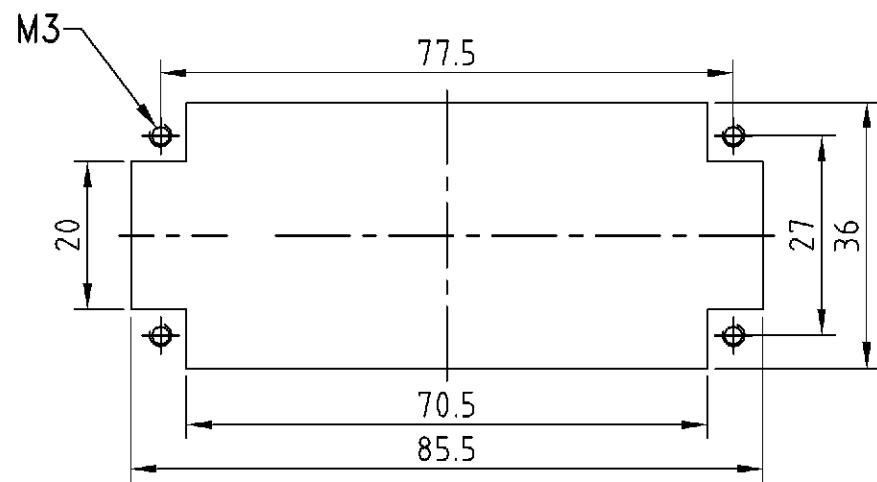


- NOTES
- ① FINISH: CONTACT , AG
  - ② POWER CONTACT: 7 TO 12  
OUTER DIMENSIONS OF INSULATION: MAX.  $\phi$  7.0 MM
  - ③ GROUNDING CONTACT
  - ④ SUITABLE HOOD SIZE 6: SERIES HB; HD; EMV; HIP
  - ⑤ STANDARDS:  
DIN EN 61984; DIN EN 60664-1
  - ⑥ PACKAGING: 5 PIECES IN A CARTON

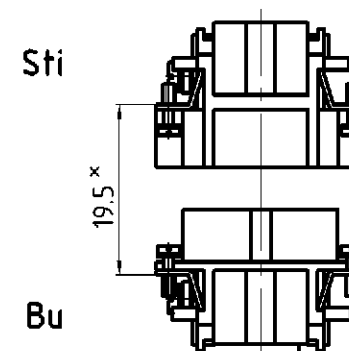
Contact arrangement view from termination side



Panel cut-out for contact insert when used without housing



Assembling instruction



X Distance for guaranteed contact max: 21 mm

1	DESCRIPTION	MATERIAL	COLOR	ITEM NO. POS.	REMARKS
1	Female insert		beige	1	-
1-1	<p>THIS DRAWING IS A CONTROLLED DOCUMENT FOR AMP INCORPORATED. IT IS SUBJECT TO CHANGE AND THE CONTROLLING ENGINEERING ORGANIZATION SHOULD BE CONTACTED FOR THE LATEST REVISION. DIESES ZEICHNUNGSDOKUMENT WIRD DURCH AMP INCORPORATED KONTROLLIERT. ÄNDERUNGEN, DIE DEM TECHNISCHEN FORTSCHRITT DIENEN, SIND VORBEHALTEN. DEN JEWELNS LETZTGÜELTIGEN ÄNDERUNGSSTAND ERFAHREN SIE AUF ANFRAGE.</p> <p>DIMENSIONS: DIMENSIONEN: mm</p> <p>TOLERANCES UNLESS OTHERWISE SPECIFIED: ALLGEMEINTOLERANZEN</p> <p>0 PLC # 1 PLC # 2 PLC # 3 PLC #</p> <p>ANGLES /WINKEL # FINISH /OBERFLÄCHE/FARBE</p>				<p>DWN Rösgen 04.06.1998</p> <p>CHK</p> <p>APVD -</p> <p>PRODUCT SPEC PRODUKTSPEZ. 108-74006</p> <p>APPLICATION SPEC VERARBEITUNGSSPEZ. 114-74007</p> <p>WEIGHT GEWICHT 90 g</p> <p>CUSTOMER DRAWING /KUNDENZEICHNUNG</p>
<p>HSB.6/35.Bu.S.7-12</p> <p>ORDERING TEXT / BESTELLTEXT</p>		<p>AMP</p> <p>HTS Elektrotechnik</p> <p>53819 Neunkirchen, Germany</p>		<p>NAME</p> <p>FEMALE INSERT</p> <p>HSB.6/35.Bu.S.7-12</p>	
<p>SIZE</p> <p>A3</p>		<p>CAGE CODE</p> <p>00779</p>		<p>DRAWING NO ZEICHNUNGS-NR.</p> <p>C=1104207</p>	
<p>RESTRICTED TO NUR FUER</p> <p>-</p>		<p>MASSSTAB</p> <p>1:1</p>		<p>BLATT</p> <p>1</p>	
<p>OF</p> <p>VON 1</p>		<p>REV</p> <p>A2</p>			