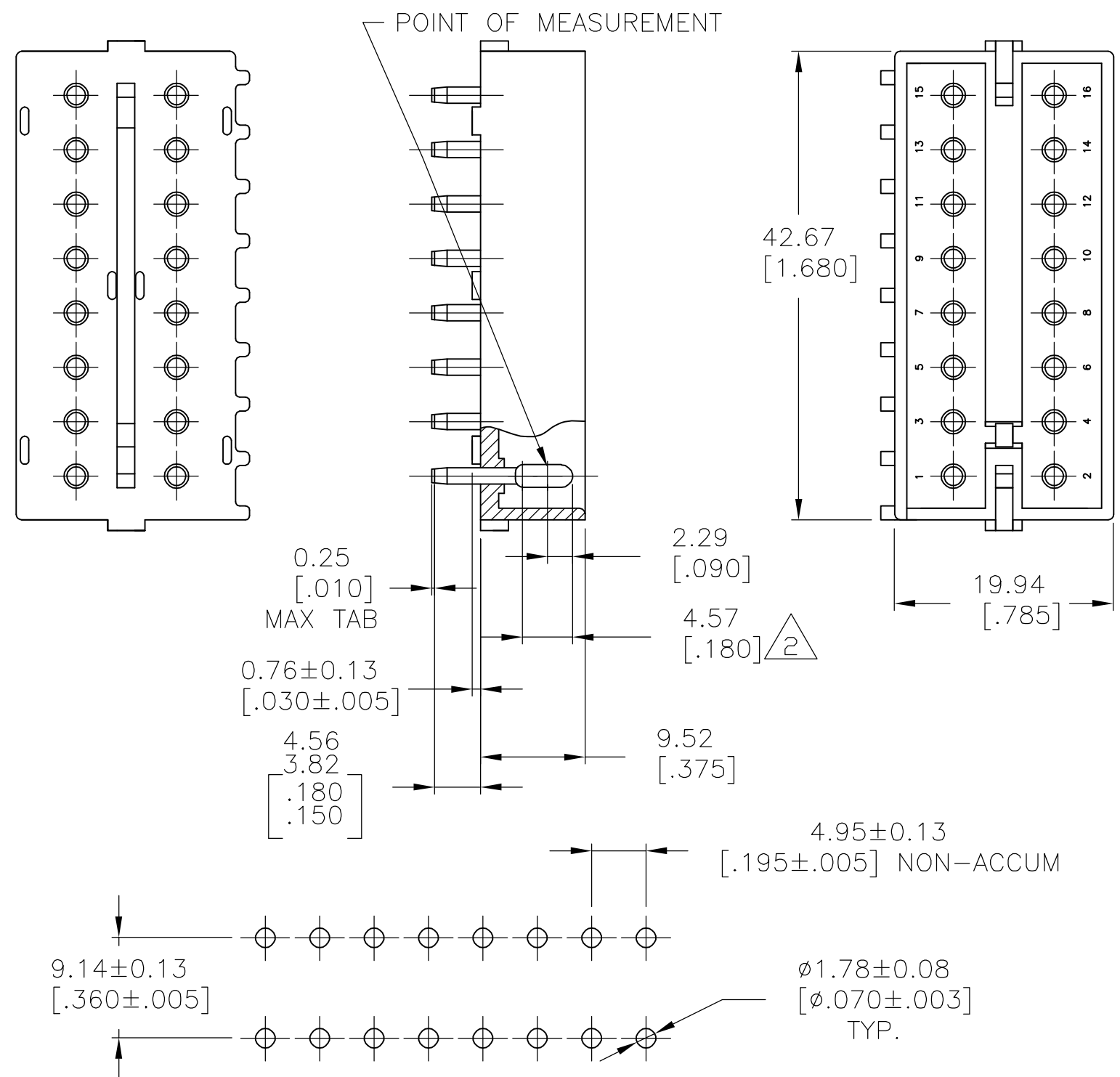


THIS DRAWING IS UNPUBLISHED. RELEASED FOR PUBLICATION
 © COPYRIGHT BY TYCO ELECTRONICS CORPORATION. ALL RIGHTS RESERVED.

LOC	DIST	REVISIONS					
CM	0	P	LTR	DESCRIPTION	DATE	DWN	APVD
		0		RELEASED PER 0G3B-1134-04	07OCT2005	APB	DC



- PARTS MUST COMPLY WITH SOLDERABILITY SPEC. 109-11-3.
- Δ CONTACT IS PLATED OVERALL WITH .000050 NICKEL, THEN .000030 GOLD OVER CONTACT LENGTH INDICATED AND MATTE TIN ON SOLDER TAIL END.

RECOMMENDED LAYOUT FOR 1.575[.062] THICK P.C. BOARD

METRIC

THIS DRAWING IS A CONTROLLED DOCUMENT.		DWN	ARJUN	07OCT05
DIMENSIONS: mm [INCHES]		CHK	D. COLEY	18OCT2005
TOLERANCES UNLESS OTHERWISE SPECIFIED:		APVD	D. COLEY	18OCT2005
0 PLC	± -	PRODUCT SPEC	NAME	
1 PLC	± -	APPLICATION SPEC	16 CIRCUIT COMMERCIAL MATE-N-LOK(TM) HEADER	
2 PLC	± -	WEIGHT	—	—
3 PLC	± -	CUSTOMER DRAWING	SCALE	2:1
4 PLC	± -	FINISH	SEE TABLE	SEE TABLE
ANGLES	± -	RESTRICTED TO	—	—
MATERIAL	SEE TABLE	SIZE	A3	CAGE CODE
		DRAWING NO	G-1586522	SHEET
		REV	0	1 OF 1

1586522-2	NYLON-NATURAL	COPPER ALLOY-GOLD Δ
ASSEMBLY NO.	HSG, MATL& COLOR	PIN MATL & FINISH
Tyco Electronics Corporation Harrisburg, PA 17105-3608		
NAME		
16 CIRCUIT COMMERCIAL MATE-N-LOK(TM) HEADER		
SIZE	CAGE CODE	DRAWING NO
A3	00779	G-1586522
SCALE		SHEET
2:1		1 OF 1
REV		0