

4.5 x 4.5mm Compact Tactile Switch

Features

Optimized Mechanical Features

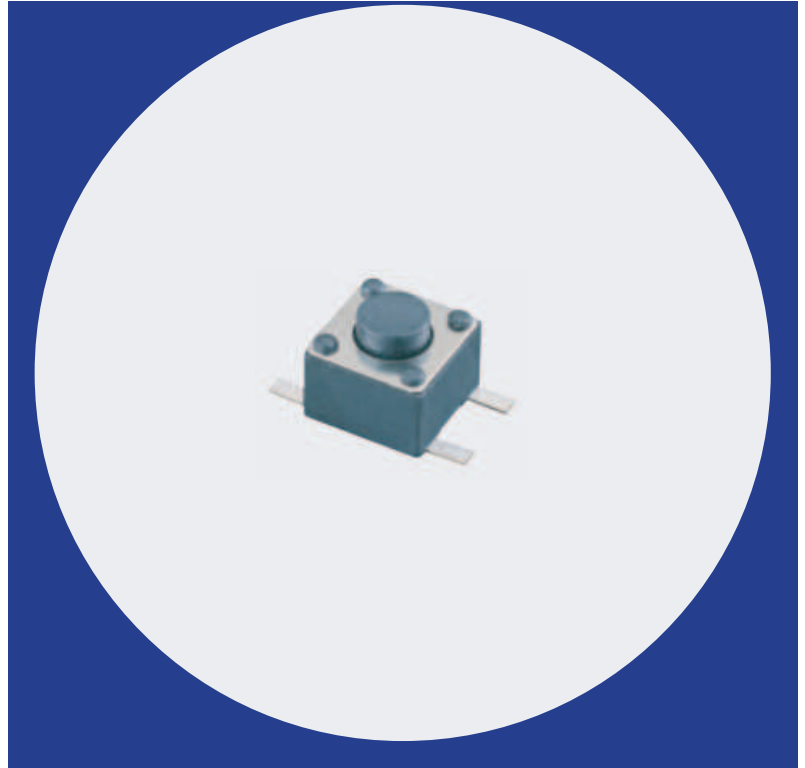
- Surface mount gull wing terminal configuration
- Compatible with IR reflow and manual soldering
- Variety of actuator height options

Optimized Contact System

- Excellent tactile feedback

Materials

- Silver coated terminals for better solderability
- High temperature materials (UL94V-0)
- RoHS compliant



Electrical and Mechanical Specifications

Switch Contact Resistance

100 milliohms maximum

Insulation Resistance

100 Megohms minimum between terminals

Maximum Rating

50mA, 12 VDC

Dielectric Strength

100 VAC for 1 minute between adjacent terminals

Operating Force

160 gf

Travel

0.2 mm

Operating Temperature

- 40°C to +85°C

Storage Temperature

- 40°C to +85°C

Actuator Strength

3 Kgf maximum

Actuation Life

1,000,000 cycles

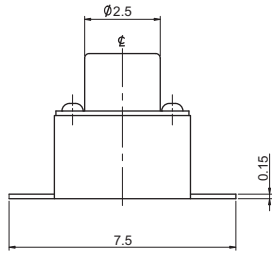
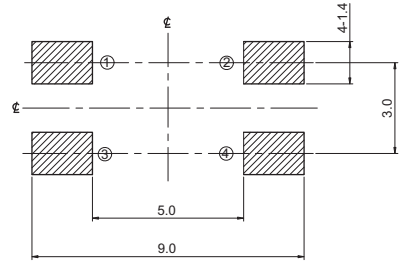
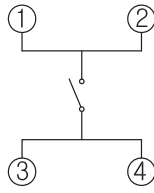
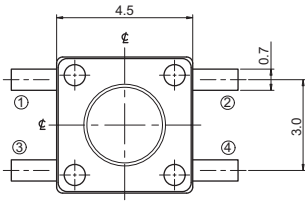
Allowable Solder Time

IR Reflow: Up to 5 seconds at 260°C.
Manual soldering: Up to 3 seconds at 350°C

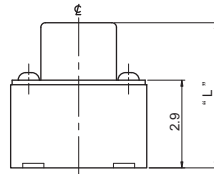
Packaging

Standard: Tape and reel packaging with 330mm diameter reel and 16mm wide plastic tape - for 3.8, 4.8mm actuator height item
330mm diameter reel and 24mm wide plastic tape - for 7.0mm actuator height item

CTS SERIES 223CM - Surface Mount Gull Wing



CIRCUIT DIAGRAM



PCB LAYOUT

DIMENSION : mm
STANDARD TOLERANCE :
.X (1 PLACE) : ±0.2

Ordering Information

