

# **Pk-1000 User Manual**

Version 1.0

13-05-2017

## Preface

Pk-1000 UWB is a positioning / distance measuring product based on IR UWB. This specification introduces PK-1000 and the configuration of it.

The following content is included in Preface:

- [The Readers](#)
- [The Annotation](#)
- [Technical Supports](#)

### [The Readers](#)

This booklet is prepared for the following people:

- Students and teachers
- Amateur developers
- Engineers

### [The Annotation](#)

Please note that the **bold text** in this booklet requires extra attention.

### [Technical Support](#)

If you have any problems about using the products (both software and hardware), don't hesitate to contact us. Contact information can be found in trough [techsupport@pudutech.com](mailto:techsupport@pudutech.com).

## Table of content

1. Interfaces defination.....	1
1.1 PK-1000 tag WIFI interface.....	1
1.2 PK-1000 tag dataOutputSerial interface.....	3
1.3 PK-1000 tag componentsListSerial interface.....	3
1.4 PK-1000 tag CAN interface.....	4
1.5 PK-1000 tag Power interface.....	5
1.6 PK-1000 anchor Power.....	5
1.7 PK-1000 anchor DIP switch.....	5
2. Hardware module code upgrade.....	6
2.1 PK-1000 tag code upgrade.....	6
2.1.1 ISP upgrade.....	6
2.1.2 SWD upgrade.....	7
2.2 PK-1000 anchor code upgrade.....	7
2.2.1 SWD upgrade.....	7
3. RLKit manual.....	7
3.1 Connection.....	7
3.1.1 Serial ports.....	7
3.1.2 TCP.....	8
3.2 Set up information.....	9
3.3 Data table and diagram.....	9

# 1. Interfaces definition

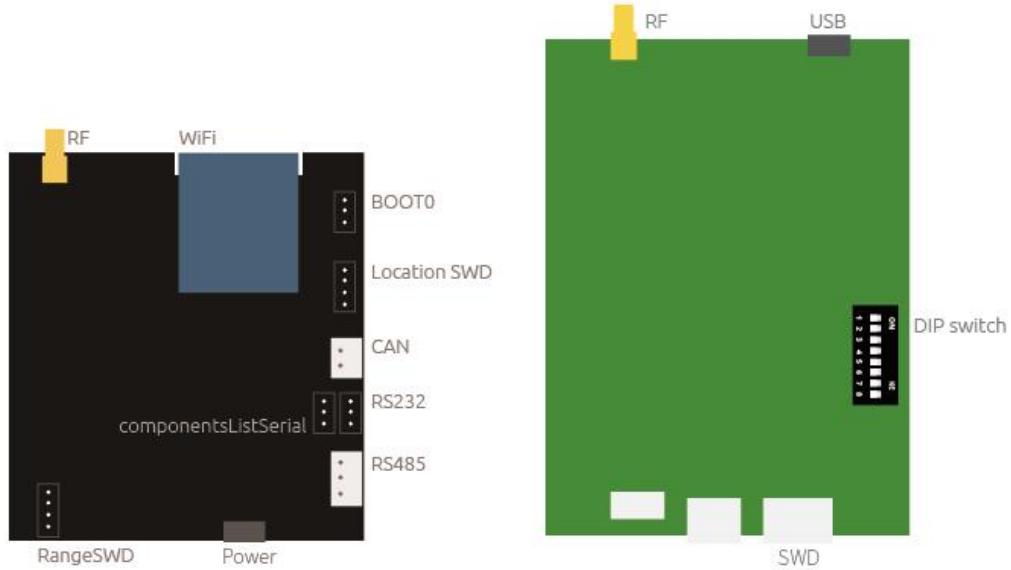


Figure 1 PK-1000 tag definition

Figure 2 PK-1000 anchor definition

## 1.1 PK-1000 tag WIFI interface

As shown in Figure 1, the PK-1000 tag is integrated with WIFI module, it serves as the TCP Server in default setting. The WIFI module communicates with WIFI Client devices (since the WIFI Client device we used in the test is host computer, so *host computer* will be used as a replacement for *WIFI Client device*), sends distance data and coordinates to the host computer, and acquires set up information from the host computer.

The data format between PK-1000 kit and WIFI is as follow:

(1) Data format for distance data and coordinates sent from PK-1000:

2Bytes	7Bytes	12Bytes	28Bytes	1Bytes	2Bytes
Frame header	Tag ID + positioning	Anchor ID + distance	Anchor ID + coordinates	Counts	Frame footer

Sample data:

37 38 00 00 00 00 00 00 00 00 00 02 19 01 01 27 02 00 39 03 00 8B 00 00 00 00 00 00 00 01 00 00 00 00 00 00 02 00 00 00 00 00 00 00 03 00 00 00 00 00 00 00 34 27 28

Yellow coded: frame header.

Green coded: The first byte is tag ID. The next 6 bytes are calculated X, Y, Z

coordinates, every two bytes represents one value. The unit of the coordinates is CM.

Blue coded: every 3 bytes make a section, there are 4 sections in total. The first byte of each section is anchor ID, the next 2 bytes is the distance between this anchor and the tag. The unit of the distance is CM.

Purple coded: every 7 bytes make a section, there are 4 sections in total. The first byte of each section is anchor ID, the next 6 bytes are the X, Y, Z coordinates of this anchor. The unit of the coordinates is CM.

Brown coded: counts output.

Red coded: frame footer.

(2) Data format of the setup information received by PK-1000 tag from host computer:

2Bytes	4Bytes	24Bytes	1Bytes	2Bytes
Frame header	Anchor ID	Anchor coordinates	Tag ID	Frame footer

Sample data:

93 83 01 02 03 04 01 00 fe b9 01 53 01 00 fe b9 01 53 01 00 fe b9 01 53 01 00 fe b9 01 53 07 85 95

Yellow coded: frame header.

Green coded: ID of selected anchors, the tag will communicate with these four anchors to measure distances.

Blue coded: every 6 bytes make a section. There are 4 sections in total. The 6 bytes in every section is the X, Y, Z coordinates of this certain anchor. The unit of the coordinates is CM.

Purple coded: tag ID.

Red coded: frame footer.

According to above sample data, the corresponding setup will be:

AnchorID	X(cm)	Y(cm)	Z(cm)
<input type="checkbox"/> anchor0	0	0	0
<input checked="" type="checkbox"/> anchor1	256	-327	339
<input checked="" type="checkbox"/> anchor2	256	-327	339
<input checked="" type="checkbox"/> anchor3	256	-327	339
<input checked="" type="checkbox"/> anchor4	256	-327	339
<input type="checkbox"/> anchor5	0	0	0
<input type="checkbox"/> anchor6	0	0	0
<input type="checkbox"/> anchor7	0	0	0

TagID

Figure 3 Anchors setup

## 1.2 PK-1000 dataOutputSerial interface

As illustrated in Figure 1, the dataOutputSerial interface on PK-1000 is designed to send distance & coordinates data, and receive set up information from host computer. On the other hand, dataOutputSerial receives and sends TTL level signal through RS232 interface. The level signal can be converted to differential signal through RS485 interface, and thus, you can directly integrate PK-1000 into the RS485 communication bus of any third party products.

The communication format for data through dataOutputSerial interface is as follow:

- (1) Data format for distance data and coordinates sent from PK-1000:

The data format is the same as for WIFI interface.

- (2) Data format of the setup information received by PK-1000 tag from host computer:

The data format is the same as for WIFI interface.

## 1.3 PK-1000 tag componentsListSerial interface

As illustrated in Figure 1, the componentsListSerial interface on PK-1000 provides the tag ID and default anchors' ID when PK-1000 is powered on. It can also be used for code upgrade through ISP protocol. In this situation, please make sure you've shorted BOOT with 3.3V.

Otherwise, please short BOOT with GND before you power up PK-1000, to guarantee normal function.

(1) The data format that componentsListSerial provides when PK-1000 is powered on:

Please connect componentsListSerial to Serial Debugging Assistant on your computer before you power the board.

```

Tag ID: 0
Anchor List:
anchorID      coordiante.x      coordiante.y      coordiante.z
0              0.00m            0.00m            0.00m
1              0.00m            0.00m            0.00m
2              0.00m            0.00m            0.00m
3              0.00m            0.00m            0.00m
    
```

Figure 4 componentsListSerial output

You can find tag ID, default anchors ID, coordinates for default anchors in Figure 4.

(2) componentsListSerial can also be used as ISP.

## 1.4 PK-1000 tag CAN interface

As illustrated in Figure 1, the CAN interface on PK-1000 gives you the access to integrate PK-1000 directly into the CAN net of your products. CAN sends distance and coordinates to the CAN net. Default ID for CAN device is 0x0002.

(1) The data format for distance sent by CAN is as follow:

1	2	3	4	5	6	7	8
Rn1_H	Rn1_L	Rn2_H	Rn2_L	Rn3_H	Rn3_L	Rn4_H	Rn4_L

Rx\_H (x=0, 1, 2, 3...): the highBit of the distance data between tag and each anchor. The unit of distance is CM.

Rx\_L (x=0, 1, 2, 3...): the lowBit of the distance between tag and each anchor. The unit of distance is CM.

(2) The data format of coordinates sent by CAN is as follow:

1	2	3	4	5	6	7	8
0x37	TagX_H	TagX_H	TagY_H	TagY_H	TagZ_H	TagZ_H	0x27

TagX\_H: the highBit of x-coordinate in CM.

TagX\_L: the lowBit of x-coordinate in CM.

TagY\_H: the highBit of y-coordinate in CM.

TagY\_L: the lowBit of y-coordinate in CM.

TagZ\_H: the highBit of z-coordinate in CM.

TagZ\_L: the lowBit of z-coordinate in CM.

(3) The data format for switching communicating anchors received by CAN:

1	2	3	4	5	6	7	8
0x38	ID1	ID2	ID3	ID4	0x00	0x00	0x28

IDx (x=0, 1, 2, 3) is the ID for selected anchors, it means that the tag is communicating with these four anchors. But please note that switching communicating anchors through CAN will end the (coordinates) calculating process automatically.

## 1.5 PK-1000 tag Power

As illustrated in Figure 1, PK-1000 is powered with 5V. USB is the default interface for power. Another option is a reserved 2.54cm wide 2\_Pin interface on the board.

## 1.6 PK-1000 anchor Power

As illustrated in Figure 2, PK-1000 anchor is powered through microUSB 5V.

## 1.7 PK-1000 anchor DIP switch

As illustrated in Figure 5, you can set anchor ID through DIP switch.

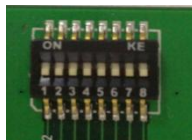


Figure 5 DIP switch

As you can see, there are 8 digits on the DIP switch:

(1) Please make sure the 1<sup>st</sup> digit is always switched to ON.

(2) The 2<sup>nd</sup> to 8<sup>th</sup> digit is the address. The 2<sup>nd</sup> is the highest bit. The 8<sup>th</sup> is the lowest bit. (Slides switched to top is ON, you can see it on the DIP switch)



SW1	SW2	SW3	SW4	SW5	SW6	SW7	SW8
always	ON:1	ON:1	ON:1	ON:1	ON:1	ON:1	ON:1
ON	OFF:0	OFF:0	OFF:0	OFF:0	OFF:0	OFF:0	OFF:0
	ADDR7	ADDR6	ADDR5	ADDR4	ADDR3	ADDR2	ADDR1

For example, if you want to set the address of an anchor to 3, it should be:

SW1	SW2	SW3	SW4	SW5	SW6	SW7	SW8
ON	OFF	OFF	OFF	OFF	OFF	ON	ON

## 2. Hardware module code upgrade

### 2.1 PK-1000 tag code upgrade

#### 2.1.1 ISP upgrade

We recommend you to upgrade your code through ISP upgrade:

(1) Please make sure that BOOT0 of LocationMCU on tag board set as HIGH voltage, and are connected to componentsListSerial and computer.

(2) PK-1000 tag is powered on, open FlyMcu.exe (free on internet, click on “Language” on the menu bar, and choose “English”) and finish settings following Figure 6.

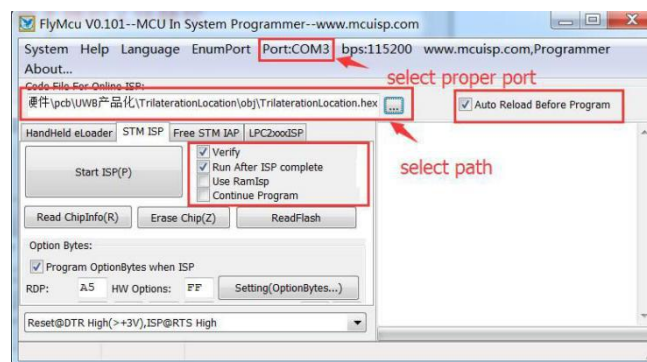


Figure 6 FlyMcu.exe set up

(3) Click on “Start ISP(P)” to upgrade the code. Once succeed, the GUI of FlyMcu looks like Figure 7.

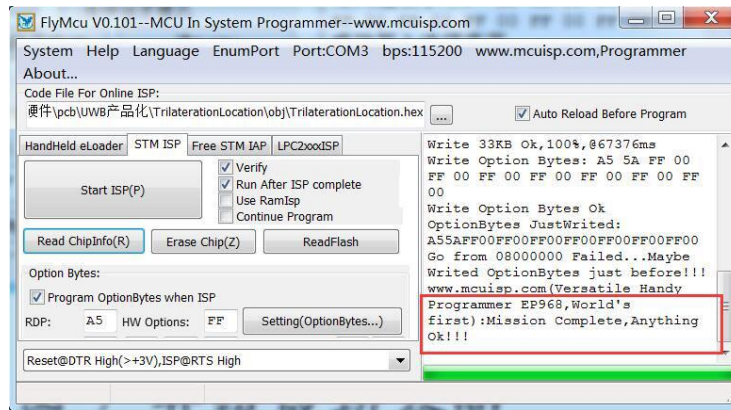


Figure 7 Upgrade succeed

(4) Cut the power. Please make sure that BOOT0 is set as LOW voltage when you want to re-power PK-1000 tag. If you need to set up anchor ID, please use our host computer RLKit.

### 2.1.2 SWD upgrade

We don't recommend you to upgrade through this method.

## 2.2 PK-1000 anchor code upgrade

### 2.2.1 SWD upgrade

We don't recommend you to upgrade through this method.

#### Attention:

1. If there's any malfunction after upgrading PK-1000 tag, or the MCU software (which communicates with UWB chip) in the PK-1000 anchor, with SWD upgrade, we bear no responsibility for this situation.

## 3. RLKit manual

### 3.1 Connection

#### 3.1.1 Serial ports

(1) Power PK-1000 tag, connect the system as following figure, and make sure the Serial-port to USB Driver is installed in advance.



Figure 8 Serial connection

(2) As illustrated in Figure 9, open RLKit, select correct serial port, and click "Open".



Figure 9 connect host computer through serial port

### 3.1.2 TCP

(1) Powered up PK-1000. Select the correct WIFI "BeiLa". The password is 12345678.



Figure 10 Connect to BeiLa WIFI

(2) Once connected to WIFI, set the value of IP address and PORT name as following figure, and then click on "Connect" button. When "Connect" changes into "Disconnect", the connection is done.

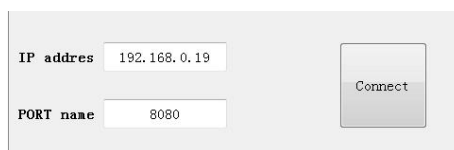


Figure 11 WIFI on host computer

(3) If connection failed, cut your WIFI and repeat step 1 and 2.

### 3.2 Set up information

(1) As illustrated in Figure 12, select the ID of the anchors you want to communicate with, their coordinates and tag ID. (If you don't need coordinates from PK-1000, you can leave the box unchecked. Attention: new tag ID only works after re-powered up.)

Setting			
AnchorID	X(cm)	Y(cm)	Z(cm)
<input checked="" type="checkbox"/> anchor0	326	452	356
<input checked="" type="checkbox"/> anchor1	752.9	-568	325
<input checked="" type="checkbox"/> anchor2	426	785	375.3
<input checked="" type="checkbox"/> anchor3	-589.6	426	326
<input type="checkbox"/> anchor4	0	0	0
<input type="checkbox"/> anchor5	0	0	0
<input type="checkbox"/> anchor6	0	0	0
<input type="checkbox"/> anchor7	0	0	0

TagID

Figure 12 Setting up anchors and tags

(2) Click on "Set" to send set up information.

### 3.3 Data table and diagram

(1) As illustrated in Figure 13, in section ①, the first column shows the tag ID, and the calculated tag coordinates. If the coordinates are not correctly calculated, it will be (0, 0, 0). The 2<sup>nd</sup> to 5<sup>th</sup> column shows anchor-tag distances and anchor coordinates.

(2) As illustrated in Figure 13, in section ②, every grid represents an area of 1m\*1m. X-axis of this coordinate system points to the right horizontally, Y-axis points to the top vertically. The red dot in the intersection point of X and Y axes is the origin. The blue dots on the diagram are anchors' locations, with their ID lying in their bottom-right corner. Blue circles are drawn with the anchor coordinates as the center, and distances as radius. The green dot is where the tag is, and its coordinates are written on the bottom-right corner of this dot. You can get an overview of how PK-1000 works clearly in this diagram:

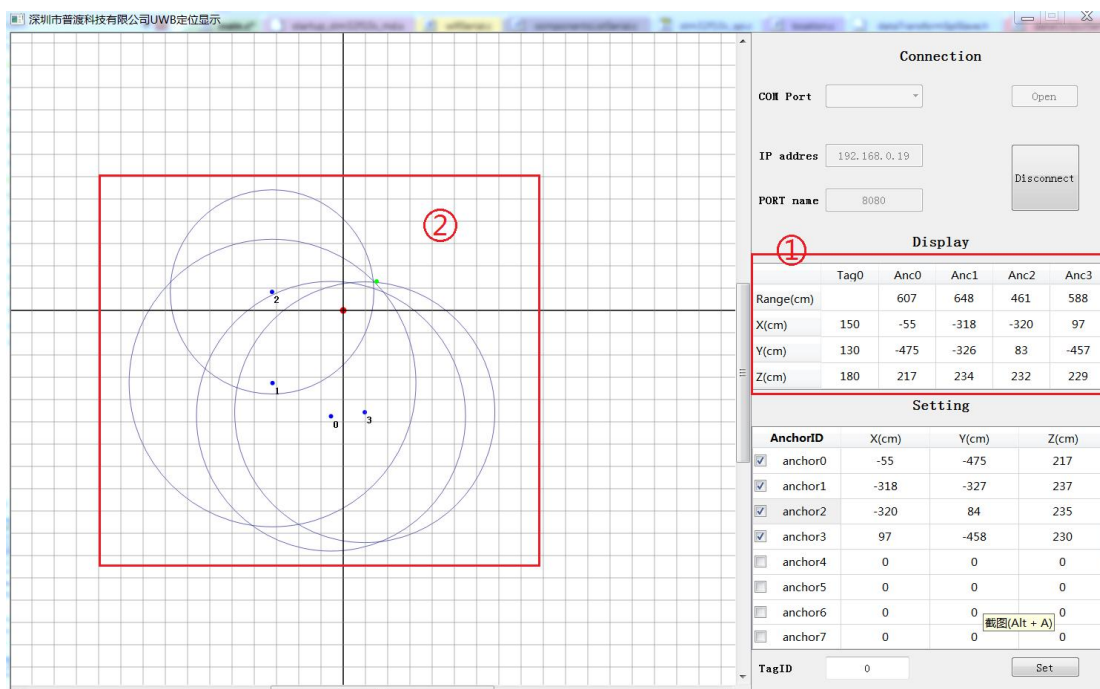


Figure 13 Sample interface