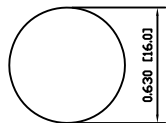
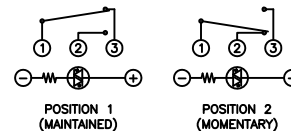


SUGGESTED PANEL CUTOUT



MAXIMUM PANEL THICKNESS: 0.551 [14.0mm]

SCHEMATIC



SPECIFICATIONS

FUNCTION:  
1P2T ON-(ON)

RATING:  
NOM-003-SCFI-2000 (200901C07839):  
2A 48VDC [NOM]

ILLUMINATION VOLTAGE:  
6V 20mA

CONTACT RESISTANCE:  
Initial: 50mΩ Max. at 1A 12VDC

INSULATION RESISTANCE:  
1,000MΩ Min. at 500VDC

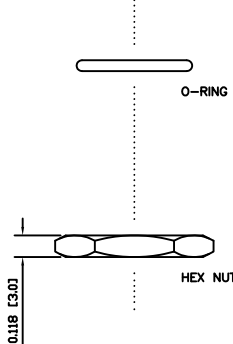
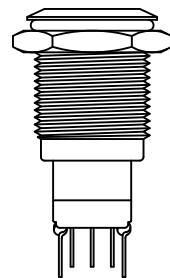
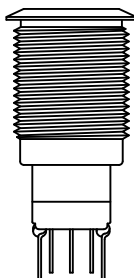
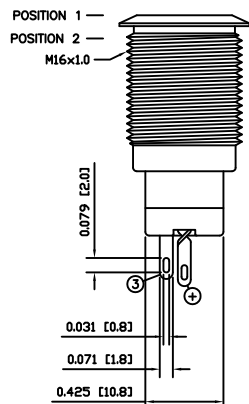
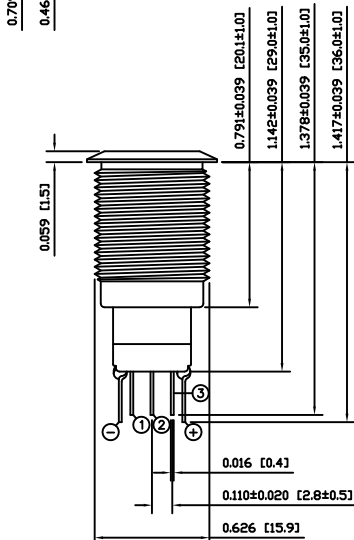
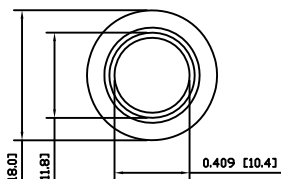
DIELECTRIC STRENGTH:  
2,000VAC Min. for 1 Minute

ELECTRICAL LIFE:  
50,000 Cycles

MECHANICAL LIFE:  
200,000 Cycles

TEMPERATURE:  
Operating: -20°C to 55°C

INGRESS PROTECTION:  
IP65



EXPLODED VIEW

ASSEMBLED VIEW

COLORS AND FINISH

BEZEL:  
Black  
Anodized Finish

ACTUATOR:  
Black  
Anodized Finish

ILLUMINATION:  
Green (Forward)  
Green (Reverse)

LENS:  
Transparent Green

MARKING:  
None

MATERIALS

BUSHING:  
Aluminum (6063)

BASE:  
Polybutylene Terephthalate (PBT)  
Polycarbonate (PC)

ACTUATOR:  
Aluminum (6063)  
Polycarbonate (PC)

SEAL:  
Silicone Rubber

HARDWARE:  
Nickel Plated Brass (H59)

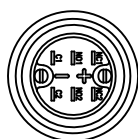
INNER ASSEMBLY:  
Polyoxymethylene (POM)  
Polycarbonate (PC)  
Polybutylene Terephthalate (PBT)  
Silver Plated Brass (H62)  
Beryllium Copper

SPRING:  
Stainless Steel (304)

CONTACTS:  
Silver/Cadmium Oxide (AgCdO)

TERMINALS:  
Silver Plated Brass (H62)

O-RING:  
Silicone Rubber



BODY	B	10/06/17	CAB
COLORS	A	11/01/28	CAB
MATERIALS	A	10/11/24	CAB
SPECIFICATIONS	B	09/09/28	CAB
REFERENCE	REV.	DATE	BY

THE INFORMATION CONTAINED IN THIS DOCUMENT IS PROPRIETARY TO E-SWITCH AND IS NOT TO BE COPIED OR TRANSFERRED

A	INITIAL RELEASE	19827	11/01/28	CAB
REV.	DESCRIPTION	PCR	DATE	DRAWN BY

DIMENSIONS	INCHES [MILLIMETERS]
GENERAL TOLERANCES	±0.008 [±0.2] / ±1°
SCALE	DRAWING NOT TO SCALE
PROJECTION	First Angle

PV3WF2B011-333		
ITEM NUMBER	DATE	REVISION
52-PV3WF2B011333	JANUARY 28, 2011	A