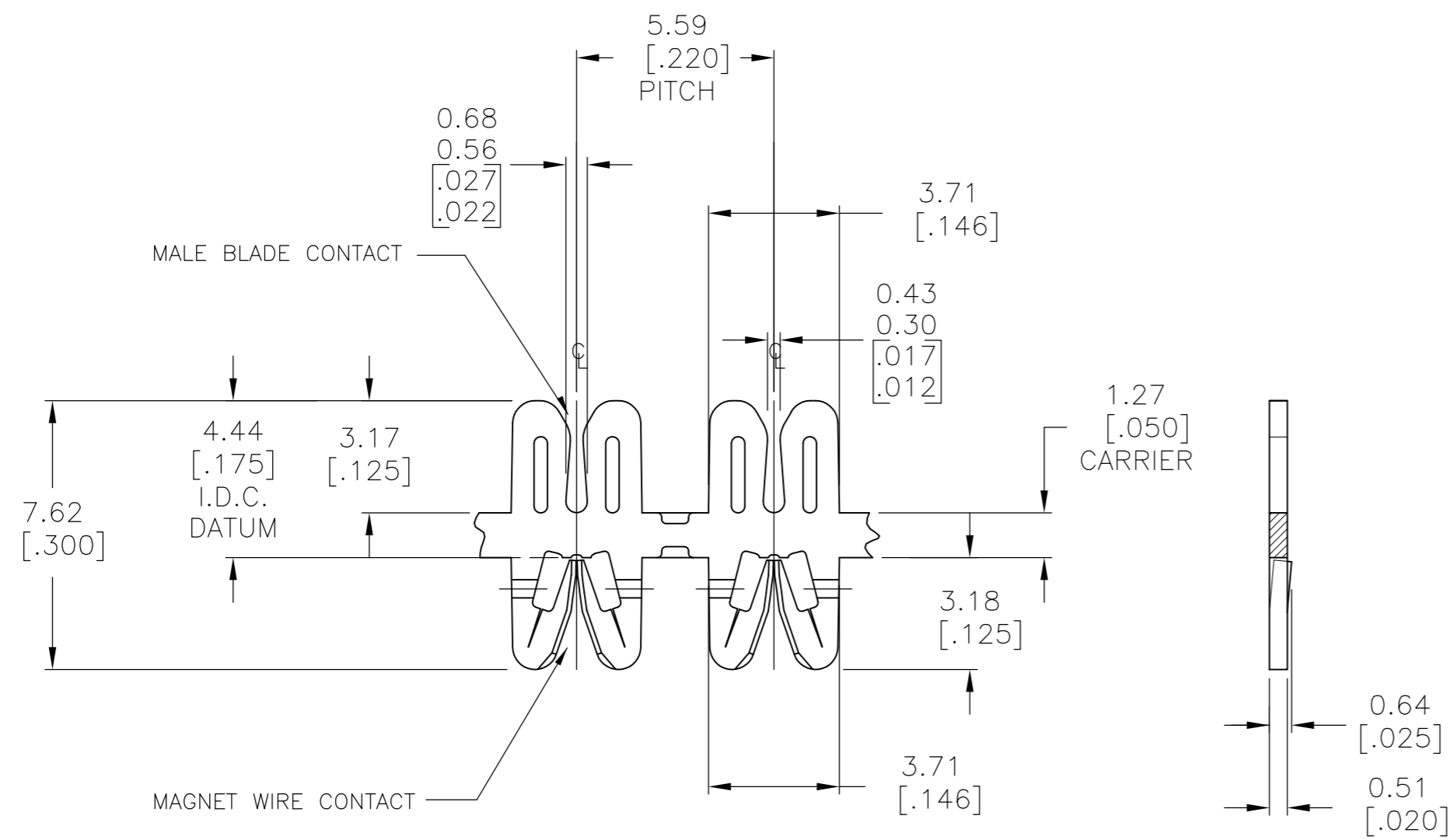
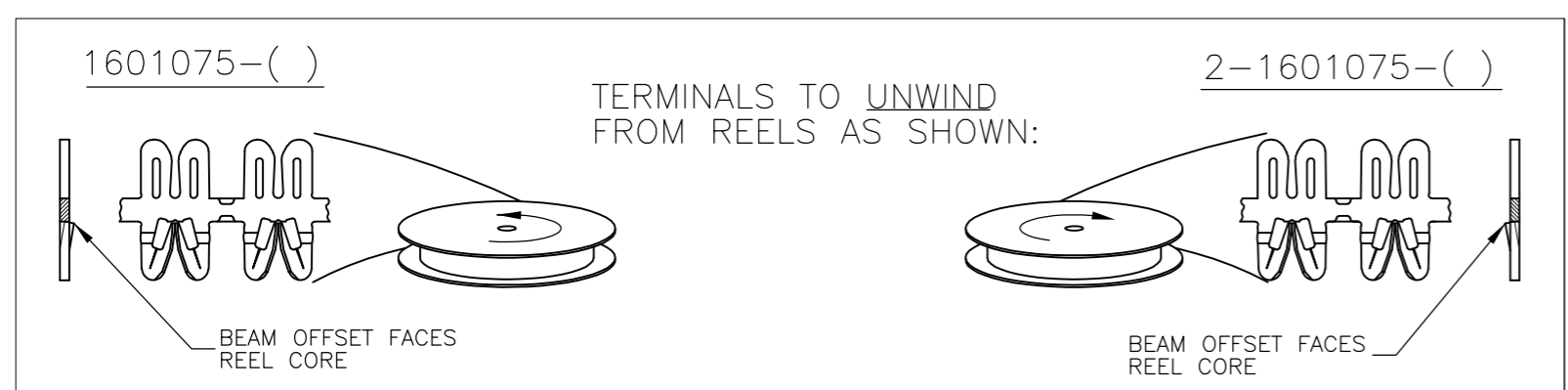
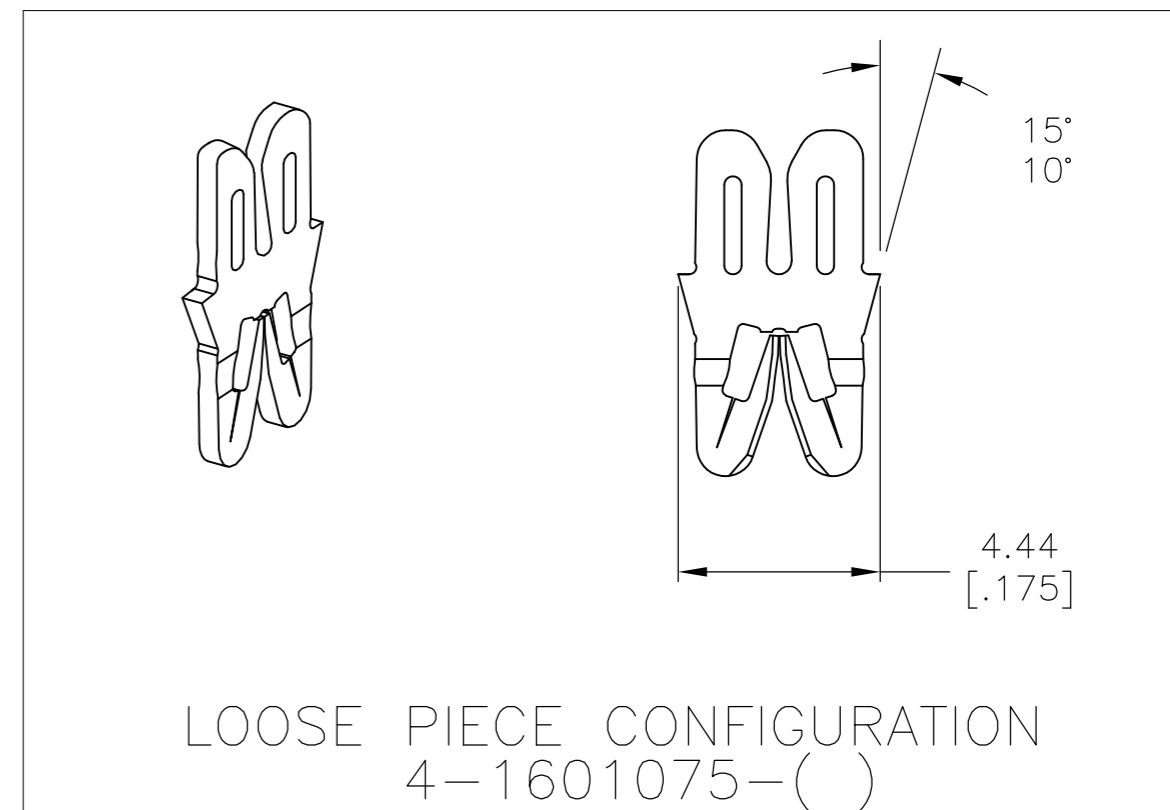


THIS DRAWING IS UNPUBLISHED. RELEASED FOR PUBLICATION
 © COPYRIGHT - By - ALL RIGHTS RESERVED.

LOC		DIST		REVISIONS			
P	LTR	DESCRIPTION		DATE	DWN	APVD	
AF	50	D4	REVISED PER ECR-15-012437		28AUG2015	GRZ	JL



- 1 SPECIFICATIONS:
 MAGNET WIRE #18 - #34 AWG,
 0.16MM(.006")-1.02MM(.040") DIA COPPER.
 OTHER SIZES MAY BE ACCOMMODATED,
 CONSULT TYCO ELECTRONICS FOR APPROVAL.
 MALE BLADE 0.5MM(.020") THICK BRASS
- 2 POCKET RECOMMENDATION: #1601425
- 3 TERMINALS TO BE APPLIED PER TYCO ELECTRONICS SPECIFICATION 114-13166 FIGURE 11.



PRE-TIN PLATE OVER COPPER UNDERPLATE	031-145-014	4-1601075-2
UNPLATED	031-145-014	4-1601075-1
POST TIN PLATE OVER NICKEL UNDERPLATE	-	2-1601075-3
PRE-TIN PLATE OVER COPPER UNDERPLATE	131-146-014	2-1601075-2
UNPLATED	131-146-000	2-1601075-1
PRE-TIN PLATE OVER COPPER UNDERPLATE	131-145-014	1601075-2
UNPLATED	131-145-000	1601075-1
FINISH	REFERENCE PART NUMBER	PART NUMBER
THIS DRAWING IS A CONTROLLED DOCUMENT.		DWN J.WELLER 11JAN2002
DIMENSIONS: mm [INCHES]		CHK M.FEHER 11JAN2002
TOLERANCES UNLESS OTHERWISE SPECIFIED:		APVD K.RANDOLPH 11JAN2002
0 PLC ± -	1 PLC ± 0.25 [.010]	NAME
2 PLC ± 0.13 [.005]	3 PLC ± -	PRODUCT SPEC
4 PLC ± -	ANGLES ± 2°	108-2085
MATERIAL BRASS, SPRING HARD	FINISH SEE TABLE	APPLICATION SPEC
WEIGHT -		SIZE A2
CUSTOMER DRAWING		CAGE CODE 00779
SCALE 6:1		DRAWING NO C=1601075
SHEET 1 OF 1		RESTRICTED TO -
REV D4		