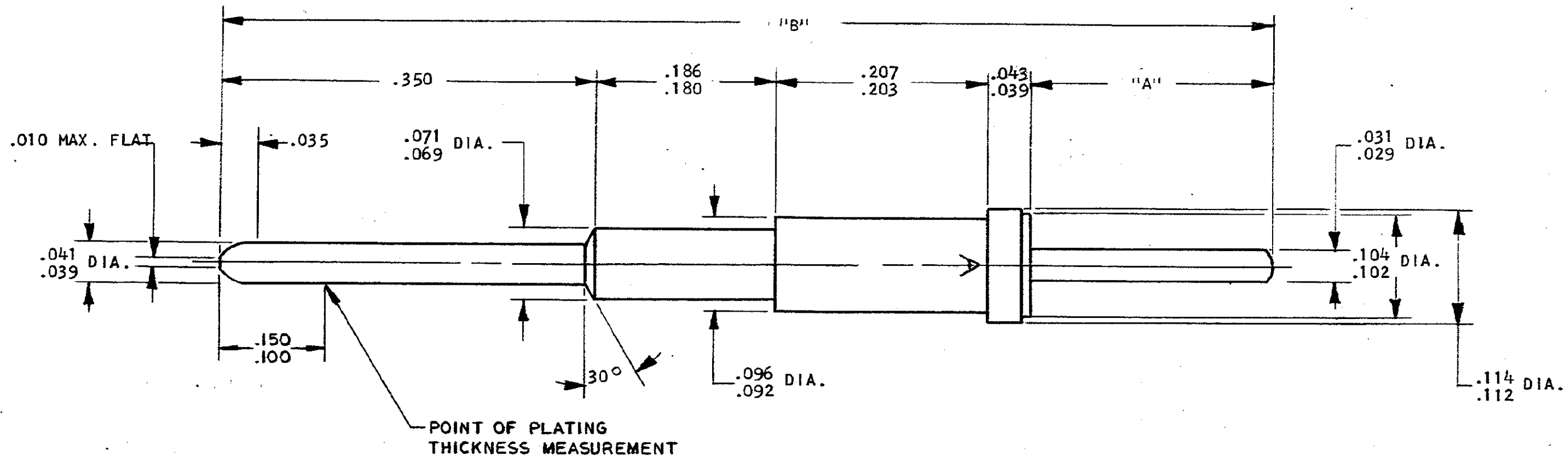


DRAWING MADE IN THIRD ANGLE PROJECTION

© COPYRIGHT 1981 BY AMP INCORPORATED, HARRISBURG, PA.
 ALL INTERNATIONAL RIGHTS RESERVED. AMP INCORPORATED PRODUCTS
 COVERED BY U. S. AND FOREIGN PATENTS AND/OR PATENTS PENDING.

- 208201-2 1. AS SHOWN.
 2. "A" = .242/.230, "B" = 1.015 REF.
- 4 1. SAME AS -2 EXCEPT:
 2. "A" = .412/.400, "B" = 1.185 REF.

		REVISIONS				
P	F	ZONE	LTR	DESCRIPTION	DATE	APPROVED
✓		0		RELEASED	AHIII 12/24/80	[Signature]
✓	✓	A		REVISED PER ECN J-342	AHIII 1/5/82	[Signature]
✓		B		REVISED PER ECN J-887	1/27/82	[Signature]



UNLESS OTHERWISE SPECIFIED DIMENSIONS ARE IN INCHES. TOLERANCES ON: DECIMALS ±.005 ANGLES ± 2°		CONTRACT NO 12/30/80		AMP INCORPORATED Harrisburg, Pa.	
MATERIAL LEADED COPPER		DR [Signature] 1-5-81		NAME PIN CONTACT, SIZE 20, ARINC 600 TYPE SPECIAL	
FINISH GOLD PER MIL-G-45204 OVER NICKEL PER QQ-N-290		CHK [Signature] 1/6/81		APPD [Signature] 1/6/81	
		DSGN APPD [Signature]		APPD [Signature]	
		OTHER APPD		SIZE CODE IDENT NO DRAWING NO C 00779 208201	
		SCALE #		SHEET OF 1	

CUST # 208201