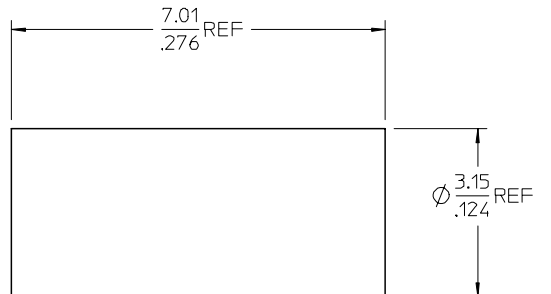
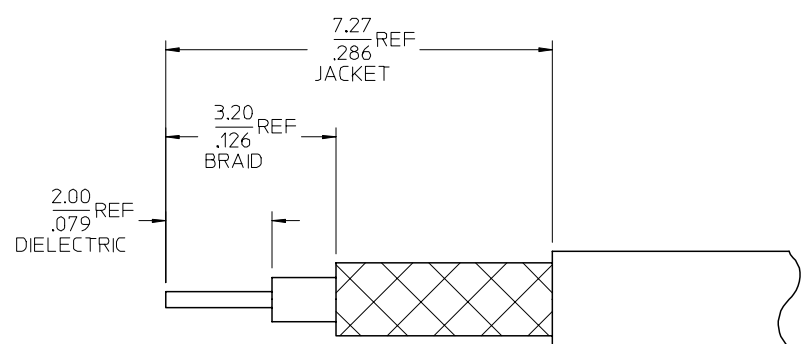


- MATERIALS AND FINISHES
- J HOUSING BRASS  
PLATED GOLD
  - I CENTER CONTACT BRASS  
PLATED GOLD
  - H CAP BRASS  
PLATED GOLD
  - H OUTER CONTACT BERYLLIUM COPPER  
PLATED GOLD
  - G TUBE BRASS  
PLATED GOLD
  - G INSULATOR TEFLON



RECOMMENDED STRIPPING  
DIMENSIONS

CRIMP HEX SIZE .105 INCH

A	B	CHG: ADDED 7.01 REF AND 3.15 REF AND STRIPPING DIMENSION EC NO: URF2007-0270 DRW:SSHAH 2007/01/10 CHKD:IFLAHERY 2007/01/10 APPR:JMLENER 2007/01/10 A2	QUALITY SYMBOLS =0 =0	GENERAL TOLERANCES (UNLESS SPECIFIED)		DIMENSION STYLE MM/IN		SCALE	DESIGN UNITS METRIC	THIRD ANGLE PROJECTION	
				mm	INCH	DRAWN BY JOHN	DATE 2005/03/30	TITLE	SSMCX PLUG, R/A, 50 OHM FOR RG178 CABLE SSMCX-PC/RA		
				4 PLACES ± .005	± .005	CHECKED BY JOHNSON	DATE 2005/03/30				
				3 PLACES ± .005	± .005	APPROVED BY MISEN	DATE 2005/03/30	molex MOLEX INCORPORATED			
		2 PLACES ± 0.05	± .005	MATERIAL NO. 734130070		DOCUMENT NO. SD-73413-007		SHEET NO. 1 OF 1			
		1 PLACE ± 0.10	± .005	DRAFT WHERE APPLICABLE MUST REMAIN WITHIN DIMENSIONS		THIS DRAWING CONTAINS INFORMATION THAT IS PROPRIETARY TO MOLEX INCORPORATED AND SHOULD NOT BE USED WITHOUT WRITTEN PERMISSION					