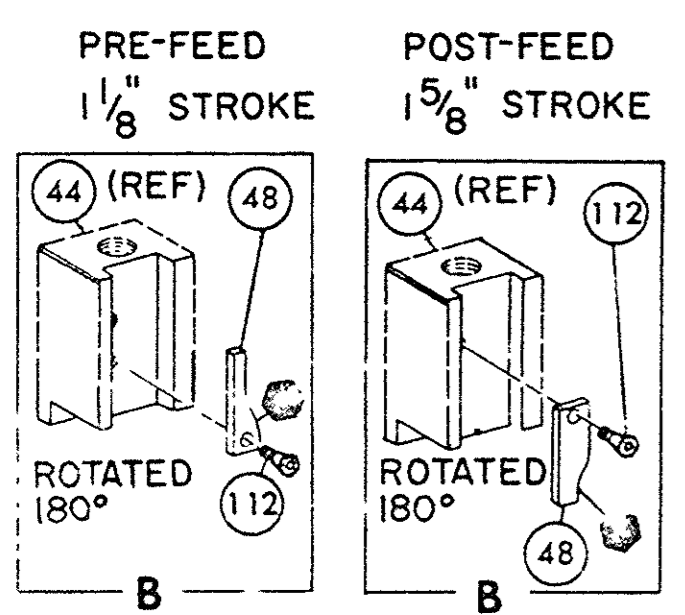
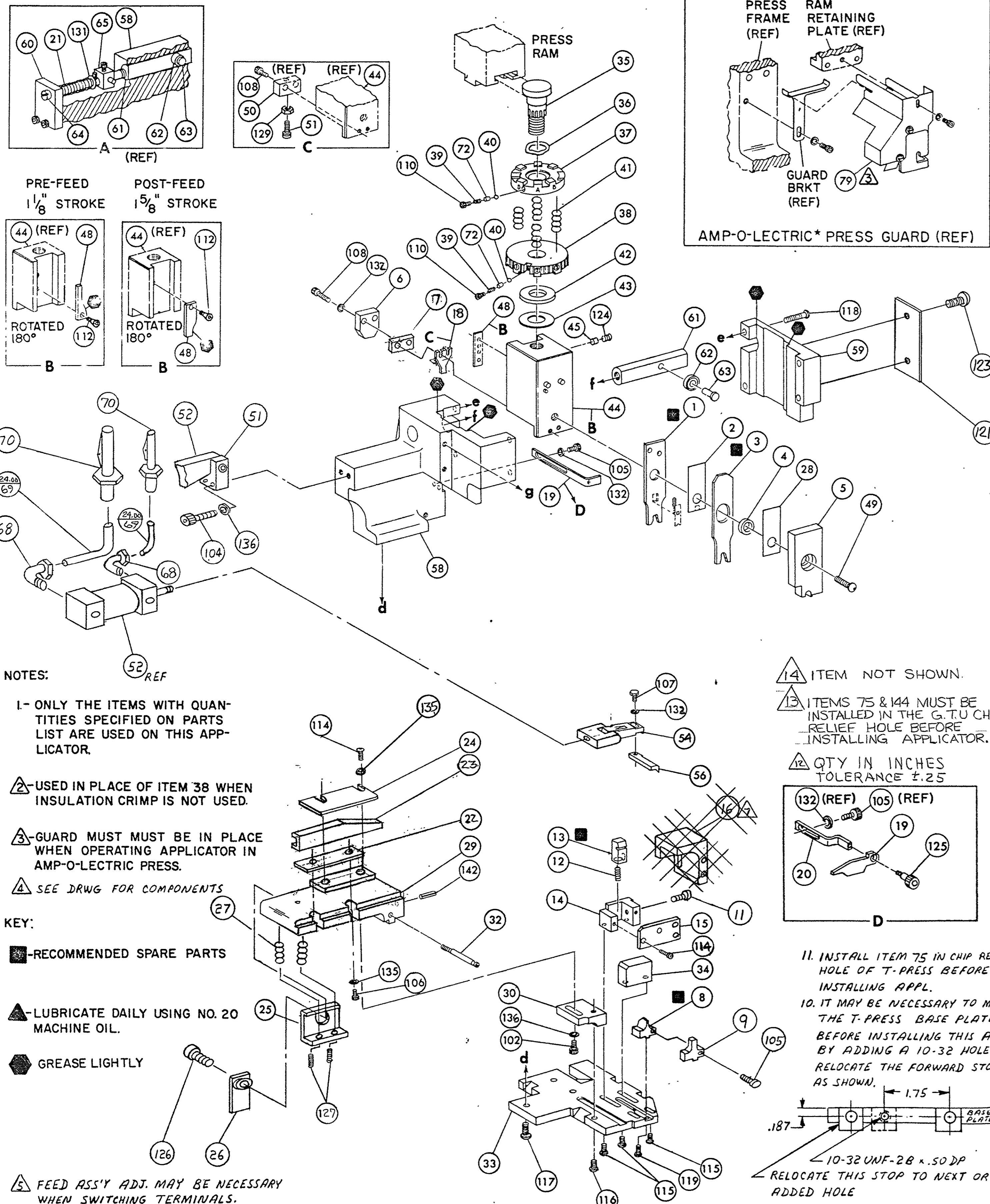


THIS IS A CONTROLLED DOCUMENT. FOR THE CONTROL OF THIS DOCUMENT, CONTACT THE CONTROLLING ENGINEER'S ORGANIZATION. THIS DOCUMENT SHOULD BE CONTACTED FOR THE LATEST REVISION.



- NOTES:**
- I- ONLY THE ITEMS WITH QUANTITIES SPECIFIED ON PARTS LIST ARE USED ON THIS APPLICATOR.
  - △ USED IN PLACE OF ITEM 38 WHEN INSULATION CRIMP IS NOT USED.
  - △ GUARD MUST BE IN PLACE WHEN OPERATING APPLICATOR IN AMP-O-LECTRIC PRESS.
  - △ SEE DRWG FOR COMPONENTS
- KEY:**
- -RECOMMENDED SPARE PARTS
  - ▲ -LUBRICATE DAILY USING NO. 20 MACHINE OIL.
  - ◆ GREASE LIGHTLY
  - △ FEED ASS'Y ADJ. MAY BE NECESSARY WHEN SWITCHING TERMINALS.
  - △ TO CHECK CRIMP HT. CRIMP SOLDER (1/8 DIA 60/40 SOLID CORE) AND MEASURE AT CENTER OF SLUG

- 14 ITEM NOT SHOWN.
- 13 ITEMS 75 & 144 MUST BE INSTALLED IN THE G.T.U CHIP RELIEF HOLE BEFORE INSTALLING APPLICATOR.
- △ QTY IN INCHES TOLERANCE ±.25
11. INSTALL ITEM 75 IN CHIP RELIEF HOLE OF T-PRESS BEFORE INSTALLING APPL.
10. IT MAY BE NECESSARY TO MODIFY THE T-PRESS BASE PLATE BEFORE INSTALLING THIS APPL. BY ADDING A 10-32 HOLE TO RELOCATE THE FORWARD STOP AS SHOWN.
- 17.5
- 10-32 UNF-28 x .50 DP  
RELOCATE THIS STOP TO NEXT OR ADDED HOLE
16. ITEM 76 REQ'D WHEN APPL. IS REMOVED FROM AMPOMATOR & PLACED IN A-O-L PRESS.
15. ITEM 76 MUST BE REMOVED IF APPL. IS REMOVED FROM AMP-O-MATOR & PLACED IN A-O-L PRESS.

THIS IS A CONTROLLED DOCUMENT.

QTY	PART NO	DESCRIPTION	ITEM NO
1	21045-3	RING, RETAINING 'C' (.187 DIA) FEED FINGER PIN	145
1	189728-1	BRACKET, SPACER	144
1	5-21028-1	PIN, SLOT SPR (.125 DIA X .50) ADJ ROD	143
1	4-21028-0	PIN, SLOT SPR (.093 DIA X .75) STR G PLATE	142
1	1-21030-1	PIN, DOWEL (.187 DIA X .50) LEVER	141
1	1-21030-6	PIN, DOWEL (.187 DIA X 1.25) HOUSING	140
1	21024-5	WASHER, LOCK (NO 10) LUB ASSY	139
1	21024-5	WASHER, LOCK (NO 10) STRIP GUIDE ADJ BLOCK	138
1	21024-5	WASHER, LOCK (NO 10) ADJ PLATE	137
3	21024-5	WASHER, LOCK (NO 10) FEED GUIDE ROD	136
3	21024-2	WASHER, LOCK (NO 4) FRONT STRIP GUIDE	135
1	21024-4	WASHER, LOCK (NO 8) FEED FINGER	134
1	21024-4	WASHER, LOCK (NO 8) DEPRESSOR	133
4	21024-4	WASHER, LOCK (NO 8) STRIPPER, DEP & FINGER	132
1	21899-4	WASHER, FLAT (5/16 DIA) SCREW ADJ	131
1	21899-2	WASHER, FLAT (NO 10) LUB ASSY	130
1	21018-5	NUT, HEX MACH (6-32) HOLDDOWN	129
1	21018-5	NUT, HEX MACH (6-32) FEED ADJ	128
2	5-21006-6	SCR, SET (10-32 X .75) DRAG	127
1	22353-8	SCR, SHLD. (.187 DIA X .250 LG) DRAG LEVER	126
1	456567-1	SCR, SHLD (.188 DIA X .125 LG) STRIPPER	125
1	21007-2	SCR, SKT SET (1/4-20 X .25) (LOC-WEL) RAM	124
2	21017-2	SCR, DRIVE #2 X .19	123
1	6-23715-5	SCR, PAN HD MACH (6-32 X 1.50) FEED ADJ	122
1	461264-1	PLATE, IDENTIFICATION	121
1	2-21002-9	SCR, BUT HD SKT CAP (10-32 X .75) DRAG	120
1	22733-8	SCR, BUT HD SKT CAP (8-32 X .38) (LOC-WEL) ANVIL	119
4	2-21002-9	SCR, BUT HD SKT CAP (10-32 X .75) CAP	118
3	17177-1	SCR, BUT HD SKT CAP (1/4-20 X .62) HOUSING	117
1	2-21002-2	SCR, BUT HD SKT CAP (10-32 X .50) SG ADJ BLOCK	116
4	2-21002-2	SCR, BUT HD SKT CAP (8-32 X .50) SHEAR	115
4	1-21000-3	SCR, SKT HD SKT CAP (4-40 X .25) R STRIP GUIDE	114
1	2-21000-7	SCR, SKT HD SKT CAP (8-32 X .50) ANVIL, INSUL	113
1	2-21003-0	SCR, FLAT HD SKT CAP (6-32 X .50) CAM	112
1	3-21000-4	SCR, SKT HD CAP (10-32 X .38) LUBRICATOR ASSY	111
2	23030-1	SCR, SKT HD CAP (6-32 X .25) (LOC-WEL) CP DISC	110
1	1-21000-3	SCR, SKT HD CAP (4-40 X .25) REAR SHEAR PLATE	109
2	2-21000-9	SCR, SKT HD CAP (8-32 X .75) DEPRESSOR	108
1	2-22603-0	SCR, HEX HD MACH (8-32 X .31) FEED FINGER	107
3	1-21000-4	SCR, SKT HD CAP (4-40 X .38) F STRIP GUIDE	106
2	2-21000-7	SCR, SKT HD CAP (8-32 X .50) STRIPPER & ANVIL	105
2	3-21000-9	SCR, SKT HD CAP (10-32 X .100) AIR FEED ASS'Y	104
1	3-21000-6	SCR, SKT HD CAP (10-32 X .62) FEED ADJ BLOCK	103
1	3-21000-4	SCR, SKT HD CAP (10-32 X .38) SG ADJ BLOCK	102
1	3-21000-4	SCR, SKT HD CAP (10-32 X .38) PIVOT BLOCK	101
REF	462992-7	GUARD	79
1	1-465184-0	LUBRICATOR ASSY	78
1	692655-1	VALVE ASS'Y	77
REF	803931-1	BRACKET, HOLD DOWN	76
1	568681-1	SPACER, BASE PLATE	75
1	458109-1	WASHER, SPECIAL	74
1	1-18023-1	SCR, SHC, METRIC, M4 x 10 LG	73
2	690603-1	SPRING, ASSIST	72
1	690517-1	SPACER	71
2	23238-1	QUICK DISCONNECT	70
48"	27319-4	TUBING, 1/4 O.D.	69
2	22294-6	ELBOW, MALE 1/8 NPT - 1/4 T	68
1	240633-1	BUSHING	67
1	455680-1	LEVER, INTERMEDIATE	66
1	240629-1	BLOCK, PIVOT	65
1	240632-2	SCREW, ADJUSTMENT FEED ROD	64
1	240659-3	PIN, CAM ROLLER	63
1	240658-1	ROLLER, CAM	62
1	454398-2	ROD, FEED	61
1	454178-1	GUIDE, FEED ROD	60

CRIMPING DATA				APPLICATOR WILL APPLY	
PAD LTR	CRIMP HEIGHT	WIRE SIZE	SOLDER DIA		
A	.070	18	.12 DIA		520401
B	.065	20 OR 22	.12 DIA		520403
C	NOT USED				520405
D	NOT USED				
CRIMP	SIZE	TYPE	FEED	APPL INST	
WIRE	.176	D			
INSUL			.785	A1 8079	
WIRE RANGE	INSULATION RANGE		PRESS NO		
22-18	.135 MAX				
REMARKS					
KOMAX MODEL 40					
AIR FEED DOUBLE ACTING					
TERM APPL SPEC 114-2123					

REMARKS	NO	REV
APPL USED ON MACHINE PART NO	MACH SERIAL NO	DISTRIBUTION
CUSTOMER NAME	APPL SERIAL NO	ORIGINAL
ADDRESS	PURCHASE ORDER	CUSTOMER COPY
CITY	ENG APP	FIELD ENG COPY