

2N2920  
2N2920A

**SILICON  
DUAL NPN TRANSISTORS**



**TO-78 CASE**



[www.centrasemi.com](http://www.centrasemi.com)

**DESCRIPTION:**

The CENTRAL SEMICONDUCTOR 2N2920 and 2N2920A are dual silicon NPN transistors manufactured by the epitaxial planar process utilizing two individual chips mounted in a hermetically sealed metal case designed for differential amplifier applications.

**MARKING: FULL PART NUMBER**

**MAXIMUM RATINGS:** ( $T_A=25^\circ\text{C}$ )

Collector-Base Voltage	$V_{CB0}$	60	V
Collector-Emitter Voltage	$V_{CEO}$	60	V
Emitter-Base Voltage	$V_{EBO}$	6.0	V
Continuous Collector Current	$I_C$	30	mA
Power Dissipation (One Die)	$P_D$	300	mW
Power Dissipation (Both Dice)	$P_D$	500	mW
Power Dissipation (One Die, $T_C=25^\circ\text{C}$ )	$P_D$	750	mW
Power Dissipation (Both Dice, $T_C=25^\circ\text{C}$ )	$P_D$	1.5	W
Operating and Storage Junction Temperature	$T_J, T_{stg}$	-65 to +200	$^\circ\text{C}$

**SYMBOL**

$V_{CB0}$	60	V
$V_{CEO}$	60	V
$V_{EBO}$	6.0	V
$I_C$	30	mA
$P_D$	300	mW
$P_D$	500	mW
$P_D$	750	mW
$P_D$	1.5	W
$T_J, T_{stg}$	-65 to +200	$^\circ\text{C}$

**UNITS**

**ELECTRICAL CHARACTERISTICS PER TRANSISTOR:** ( $T_A=25^\circ\text{C}$  unless otherwise noted)

SYMBOL	TEST CONDITIONS	MIN	MAX	UNITS
$I_{CBO}$	$V_{CB}=45\text{V}$		2.0	nA
$I_{CEO}$	$V_{CE}=5.0\text{V}$		2.0	nA
$I_{EBO}$	$V_{EB}=5.0\text{V}$		2.0	nA
$BV_{CBO}$	$I_C=10\mu\text{A}$	60		V
$BV_{CEO}$	$I_C=10\text{mA}$	60		V
$BV_{EBO}$	$I_E=10\mu\text{A}$	6.0		V
$V_{CE(SAT)}$	$I_C=1.0\text{mA}, I_B=100\mu\text{A}$		0.35	V
$V_{BE(ON)}$	$V_{CE}=5.0\text{V}, I_C=100\mu\text{A}$		0.70	V
$h_{FE}$	$V_{CE}=5.0\text{V}, I_C=10\mu\text{A}$	150	600	
$h_{FE}$	$V_{CE}=5.0\text{V}, I_C=10\mu\text{A}, T_A=-55^\circ\text{C}$	40		
$h_{FE}$	$V_{CE}=5.0\text{V}, I_C=100\mu\text{A}$	225		
$h_{FE}$	$V_{CE}=5.0\text{V}, I_C=1.0\text{mA}$	300		
$f_T$	$V_{CE}=5.0\text{V}, I_C=500\mu\text{A}, f=20\text{MHz}$	60		MHz
$C_{ob}$	$V_{CB}=5.0\text{V}, I_E=0, f=140\text{kHz}$		6.0	pF
NF	$V_{CE}=5.0\text{V}, I_C=10\mu\text{A}, R_S=10\text{k}\Omega, f=1.0\text{kHz}, BW=200\text{Hz}$		3.0	dB

R1 (4-April 2014)

**2N2920**  
**2N2920A**  
  
**SILICON**  
**DUAL NPN TRANSISTORS**

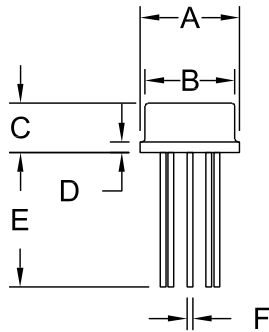


**MATCHING CHARACTERISTICS:** ( $T_A=25^\circ\text{C}$  unless otherwise noted)

SYMBOL	TEST CONDITIONS	2N2920		2N2920A		UNITS
		MIN	MAX	MIN	MAX	
$h_{FE1}/h_{FE2}^*$	$V_{CE}=5.0\text{V}, I_C=100\mu\text{A}$	0.9	1.0	0.9	1.0	
$ V_{BE1}-V_{BE2} $	$V_{CE}=5.0\text{V}, I_C=10\mu\text{A}$	-	5.0	-	2.0	mV
$ V_{BE1}-V_{BE2} $	$V_{CE}=5.0\text{V}, I_C=100\mu\text{A}$	-	3.0	-	1.5	mV
$\Delta(V_{BE1}-V_{BE2})$	$V_{CE}=5.0\text{V}, I_C=100\mu\text{A}, T_A=-55^\circ\text{C to }+25^\circ\text{C}$	-	0.8	-	-	mV
$\Delta(V_{BE1}-V_{BE2})$	$V_{CE}=5.0\text{V}, I_C=100\mu\text{A}, T_A=+25^\circ\text{C to }+125^\circ\text{C}$	-	1.0	-	-	mV

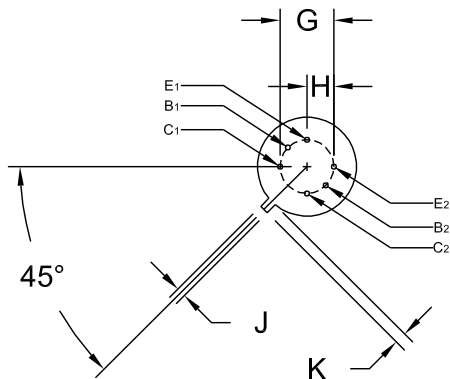
\*The lowest reading is taken as  $h_{FE1}$ .

**TO-78 CASE - MECHANICAL OUTLINE**



SYMBOL	DIMENSIONS			
	INCHES		MILLIMETERS	
	MIN	MAX	MIN	MAX
A (DIA)	0.335	0.370	8.51	9.40
B (DIA)	0.305	0.335	7.75	8.51
C	0.150	0.185	3.81	4.70
D	-	0.040	-	1.02
E	0.500	-	12.70	-
F (DIA)	0.016	0.021	0.41	0.53
G	0.200		5.08	
H	0.100		2.54	
J	0.028	0.034	0.71	0.86
K	0.029	0.045	0.74	1.14

TO-78 (REV: R1)



R1

**MARKING: FULL PART NUMBER**

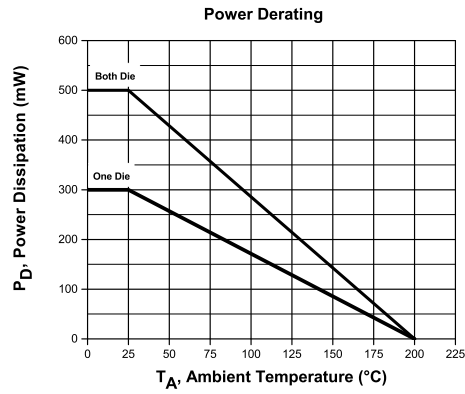
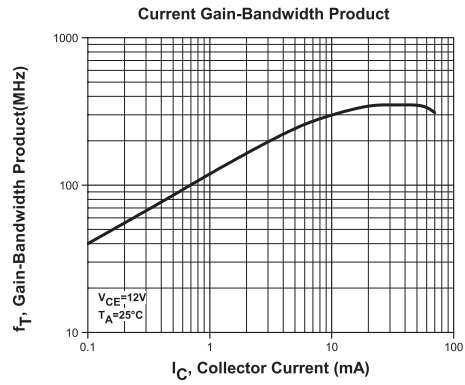
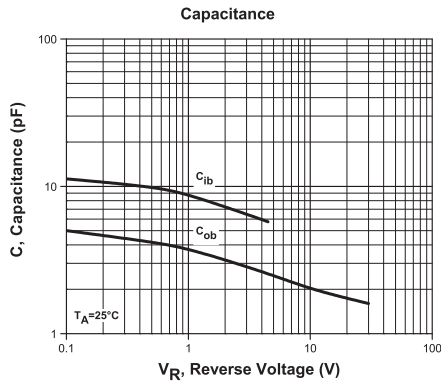
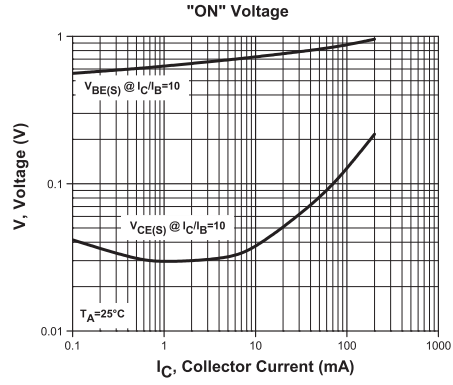
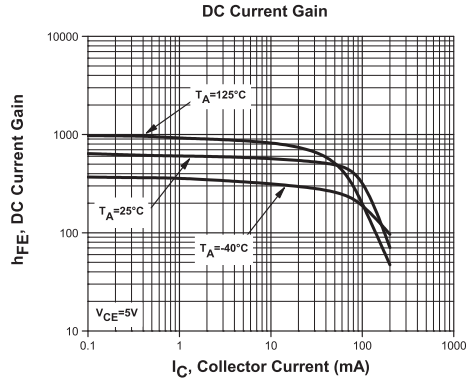
R1 (4-April 2014)

2N2920  
2N2920A

SILICON  
DUAL NPN TRANSISTORS



TYPICAL ELECTRICAL CHARACTERISTICS



R1 (4-April 2014)

## OUTSTANDING SUPPORT AND SUPERIOR SERVICES



---

### PRODUCT SUPPORT

Central's operations team provides the highest level of support to insure product is delivered on-time.

- Supply management (Customer portals)
- Inventory bonding
- Consolidated shipping options
- Custom bar coding for shipments
- Custom product packing

---

### DESIGNER SUPPORT/SERVICES

Central's applications engineering team is ready to discuss your design challenges. Just ask.

- Free quick ship samples (2<sup>nd</sup> day air)
- Online technical data and parametric search
- SPICE models
- Custom electrical curves
- Environmental regulation compliance
- Customer specific screening
- Up-screening capabilities
- Special wafer diffusions
- PbSn plating options
- Package details
- Application notes
- Application and design sample kits
- Custom product and package development

---

### CONTACT US

#### Corporate Headquarters & Customer Support Team

Central Semiconductor Corp.  
145 Adams Avenue  
Hauppauge, NY 11788 USA  
Main Tel: (631) 435-1110  
Main Fax: (631) 435-1824  
Support Team Fax: (631) 435-3388  
[www.centalsemi.com](http://www.centalsemi.com)

**Worldwide Field Representatives:**  
[www.centalsemi.com/wwreps](http://www.centalsemi.com/wwreps)

**Worldwide Distributors:**  
[www.centalsemi.com/wwdistributors](http://www.centalsemi.com/wwdistributors)

---

For the latest version of Central Semiconductor's **LIMITATIONS AND DAMAGES DISCLAIMER**, which is part of Central's Standard Terms and Conditions of sale, visit: [www.centalsemi.com/terms](http://www.centalsemi.com/terms)

# Product End of Life Notification

<b>PDN ID:</b>	PDN01061
<b>Notification Date:</b>	1/17/17
<b>Last Buy Date:</b>	7/17/17
<b>Last Shipment Date</b>	1/17/18

Summary: All transistors manufactured in the TO-78 package are discontinued and now classified as End of Life (EOL).

Although Central Semiconductor Corp. makes every effort to continue to produce devices that have been proclaimed EOL (End of Life) by various manufacturers, it is an accepted industry practice to discontinue certain devices when customer demand falls below a minimum level of sustainability. Accordingly, the following product(s) have been transitioned to End of Life status as part of Central's Product Management Process. Any replacement product will be noted below. The effective date for placing the last purchase order will be six(6) months from the date of this notice and twelve(12) months from the notice date for final shipments; this may be extended if inventory is available.

<u>Central Part Number</u>	<u>Replacement</u>
CEN876	N/A
CEN894	N/A
CEN895	N/A
CEN896	N/A
CEN911	N/A
CEN947	N/A
CEN955 W/DATA	N/A
MD2219A	N/A
MD2369	N/A
MD2369A	N/A
MD2369B	N/A
MD2905	N/A
MD2905A	N/A
MD5179	N/A
MD7000	N/A
MD7001	N/A
MD7003	N/A
MD7003A	N/A
MD7003B	N/A
MD8002	N/A
MD8003	N/A
MD918	N/A
MD918A	N/A
MD918B	N/A
MD984	N/A
2N2060	N/A
2N2060A	N/A
2N2060M	N/A
2N2223	N/A
2N2223A	N/A
2N2453	N/A
2N2453A	N/A
2N2480	N/A
2N2480A	N/A
2N2639	N/A
2N2640	N/A
2N2641	N/A
2N2642	N/A

\*\*\* CONTINUED \*\*\*

DISCLAIMER: This End of Life (EOL) notification is in accordance with JEDEC standard JESD48 - Product Discontinuance. Central Semiconductor Corp. will make every effort to offer life-time buy (LTB) opportunities and/or offer replacement devices to existing customers for discontinued devices, however, one or both may not be possible for all devices. Please contact your local Central Semiconductor sales representative for LTB opportunities/additional information.

# Product End of Life Notification

<b>PDN ID:</b>	PDN01061
<b>Notification Date:</b>	1/17/17
<b>Last Buy Date:</b>	7/17/17
<b>Last Shipment Date</b>	1/17/18

\*\*\* CONTINUED FROM PRIOR PAGE \*\*\*

<u>Central Part Number</u>	<u>Replacement</u>
2N2643	N/A
2N2644	N/A
2N2652	N/A
2N2652A	N/A
2N2720	N/A
2N2721	N/A
2N2722	N/A
2N2903	N/A
2N2903A	N/A
2N2913	N/A
2N2914	N/A
2N2915	N/A
2N2915A	N/A
2N2916	N/A
2N2916A	N/A
2N2917	N/A
2N2918	N/A
2N2919	N/A
2N2919A	N/A
2N2920	N/A
2N2920A	N/A
2N3726	N/A
2N3727	N/A
2N3806	N/A
2N3807	N/A
2N3808	N/A
2N3809	N/A
2N3810	N/A
2N3810A	N/A
2N3811	N/A
2N3811A	N/A
2N4015	N/A
2N4016	N/A
2N4854	N/A
2N4937	N/A
2N4938	N/A
2N4939	N/A
2N5793	N/A
2N5794	N/A
2N5796	N/A
2N5912	N/A
2N6502	N/A

\*\*\* CONTINUED \*\*\*

DISCLAIMER: This End of Life (EOL) notification is in accordance with JEDEC standard JESD48 - Product Discontinuance. Central Semiconductor Corp. will make every effort to offer life-time buy (LTB) opportunities and/or offer replacement devices to existing customers for discontinued devices, however, one or both may not be possible for all devices. Please contact your local Central Semiconductor sales representative for LTB opportunities/additional information.



<http://www.centrasemi.com>

# Product End of Life Notification

<b>PDN ID:</b>	PDN01061
<b>Notification Date:</b>	1/17/17
<b>Last Buy Date:</b>	7/17/17
<b>Last Shipment Date</b>	1/17/18

\*\*\* CONTINUED FROM PRIOR PAGE \*\*\*

**Central Part Number**                      **Replacement**

Central would be happy to assist you by providing additional information or technical data to help locate an alternate source if we have no replacement available. Please email your requests to [engineering@centrasemi.com](mailto:engineering@centrasemi.com).

---

DISCLAIMER: This End of Life (EOL) notification is in accordance with JEDEC standard JESD48 - Product Discontinuance. Central Semiconductor Corp. will make every effort to offer life-time buy (LTB) opportunities and/or offer replacement devices to existing customers for discontinued devices, however, one or both may not be possible for all devices. Please contact your local Central Semiconductor sales representative for LTB opportunities/additional information.