

5

4

3

2

1

受控 CONTROLLED DOCUMENT

编号 P/N	40-9809M-CUST (SEE TABLE I)	版本 Rev	02	日期 Rel'd Date	Jul11,11
-----------	--------------------------------	-----------	----	------------------	----------

Description: 9 Pin Crimp Type Plug
 Part No: 40-9809M
 Application: 98 Series D-Sub Connector
 Crimp Tool: N/A
 Impedance: N/A
 Frequency Range: N/A
 Material: Shell Steel, Nickel plated
 Insulator PBT+30%Fiber-grass,UL94-V0 Black
 RoHS Compliance: Yes
 Technical Detail: N/A



DRAWING NO.
40-9809M-CUST(SEE TABLE I)

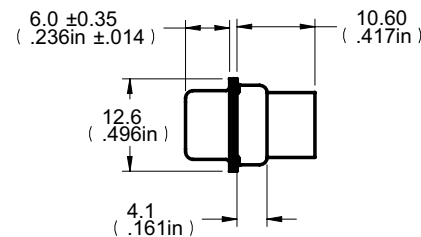
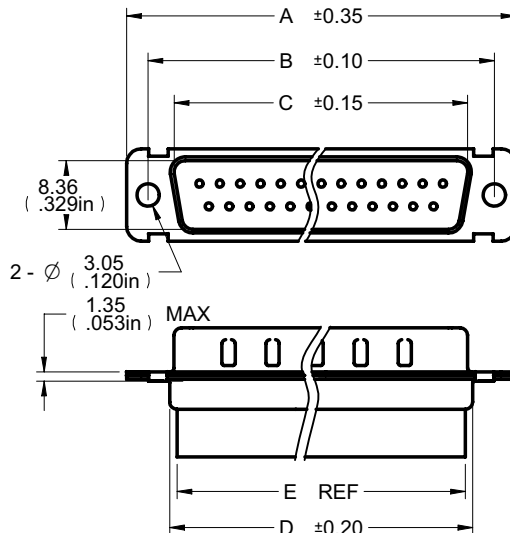
REVISIONS

01	OFFICIAL RELEASE					
	11-26-09	Y	U	Y	T	H
02	CHANGE SHELL PLATING FROM YELLOW ZINC TO NICKEL					
	10-15-10	J	U	Y	T	H

John J. ...
ECO-10-0166


TABLE I

Part Number	Description	A (mm)	B (mm)	C (mm)	D (mm)	E (mm)
40-9809M	9 Pin Crimp Type Plug	30.80	24.99	16.92	19.20	15.20
40-9815M	15 Pin Crimp Type Plug	39.15	33.32	25.25	27.70	23.70
40-9825M	25 Pin Crimp Type Plug	53.00	47.04	38.96	41.28	37.28
40-9837M	37 Pin Crimp Type Plug	69.30	63.50	55.42	57.30	53.30



DIM OUTLINE

TOLERANCE UNLESS OTHERWISE SPECIFIED		DRAWN BY JEAN.JIN	DATE 10-15-10
DECIMALS	mm	CHECKED BY BETTY.YU	DATE 10-15-10
X	± 0.5	APPROVED BY THOMAS	DATE 10-15-10
X.XX	± 0.2	U/M	mm
ANGLES	$\pm 0.5^\circ$		

CUSTOMER COPY		
 cinch CONNECTIVITY SOLUTIONS a bel group		
TITLE 9 PIN CRIMP TYPE PLUG (SEE TABLE I)		
SHEET 1 OF 1	DRAWING NO. 40-9809M-CUST (SEE TABLE I)	SIZE A

THIS DRAWING WAS PRODUCED BY COMPUTER,
DO NOT SCALE DRAWING OR UPDATE MANUALLY.

5

4

3

2

1