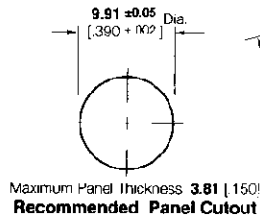
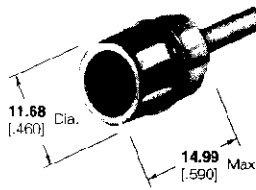
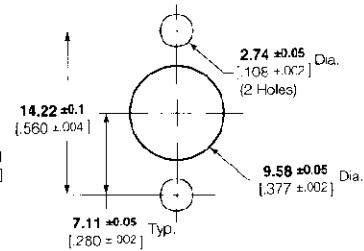
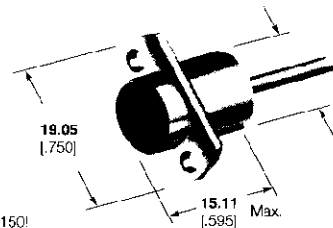


**3.5 mm Blind Mate Connectors**

**Bulkhead Plug**

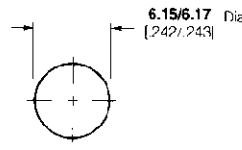
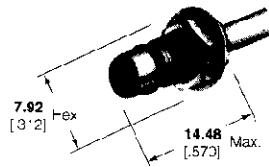


**2-Hole Panel Plug**

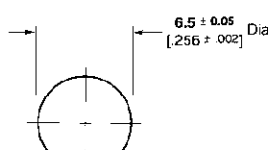


Maximum Panel Thickness 4.83 [190]  
**Recommended Panel Cutout**

**Bulkhead Jack**



**BMA Mount**



**BMB Mount**

Maximum Panel Thickness 3.18 [125]  
**Recommended Panel Cutouts**

**Lockwasher and Jam Nut**



Part No.  
1-22145-3

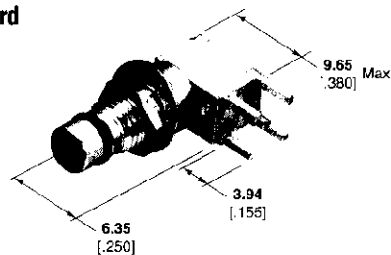


Part No.  
2-332004-0

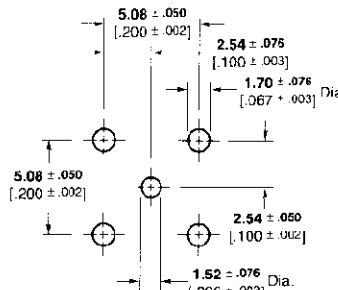
RG/U Cable	Connector Configuration	Hand Tool Kit No. 59981-1		Part No.
		Die Set	Locator**	
174, 188, 316	2-Hole Panel Plug	***	—	447314-1
	Bulkhead Jack (BMA Mount Cutout)	***	—	447315-1
316 Double Braid	Bulkhead Plug	**	—	1274113-1
432 Semi-Rigid/ 3.58 [141]	2-Hole Panel Plug	312253-1	313745-1	222200-1
405 Semi-Rigid/ 2.18 [086]	Bulkhead Plug	312253-2	313745-1	222197-1
	Bulkhead Jack (BMB Mount Cutout)	312253-2	313745-1	222196-1

\*Not included in Hand Tool Kit No. 59981-1; must be purchased separately.  
\*\*See drawing for tooling information.  
\*\*\*Use hand tool 220061-1 to crimp contact and ferrule.

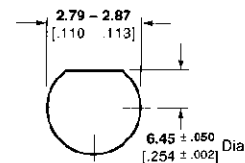
**Right Angle PC Board Bulkhead Jack**



Part No. 448089-1



**Recommended PCB Layout**



**Recommended Panel Cutout**