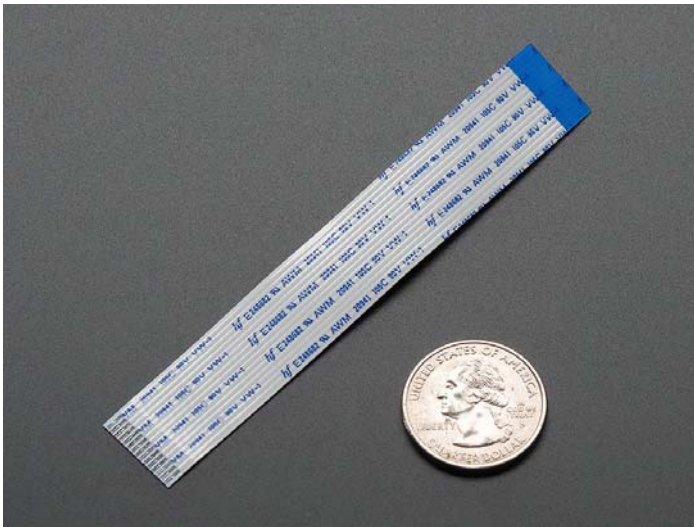




## Flex Cable for Raspberry Pi Camera - 100mm / 4"

PRODUCT ID: 1646



- **Description**

This cable will let you swap out the stock 150mm long flex cable from a Raspberry Pi Camera (either 'classic' or 'NoIR' type) for a different size. Works great, just carefully open the connector on the Pi and slip this one in.

This cable is 100mm long We have cables in 50mm, 100mm, 200mm and 300mm so you can have the perfect fit. Each order comes with one cable, Pi Camera not included (but we have those in the shop as well)

- **Technical Details**

- Dimensions: 100mm x 16mm (4" x 0.6")
- Weight: 0.8g



Engineered in NYC Adafruit®