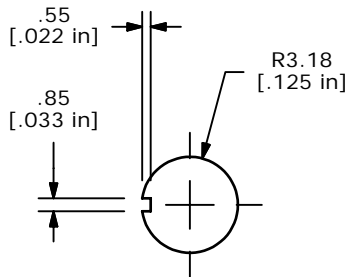
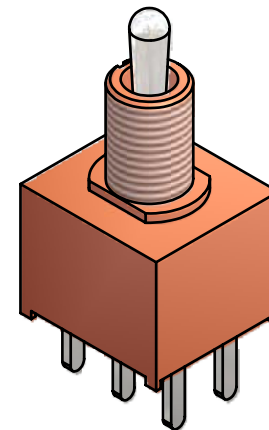
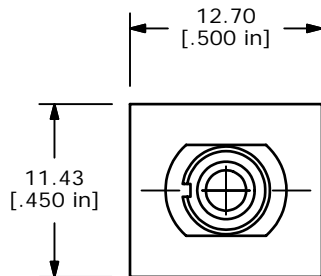


P.C. MOUNTING

Ø1.85  
[.073 in]



PANEL MOUNTING

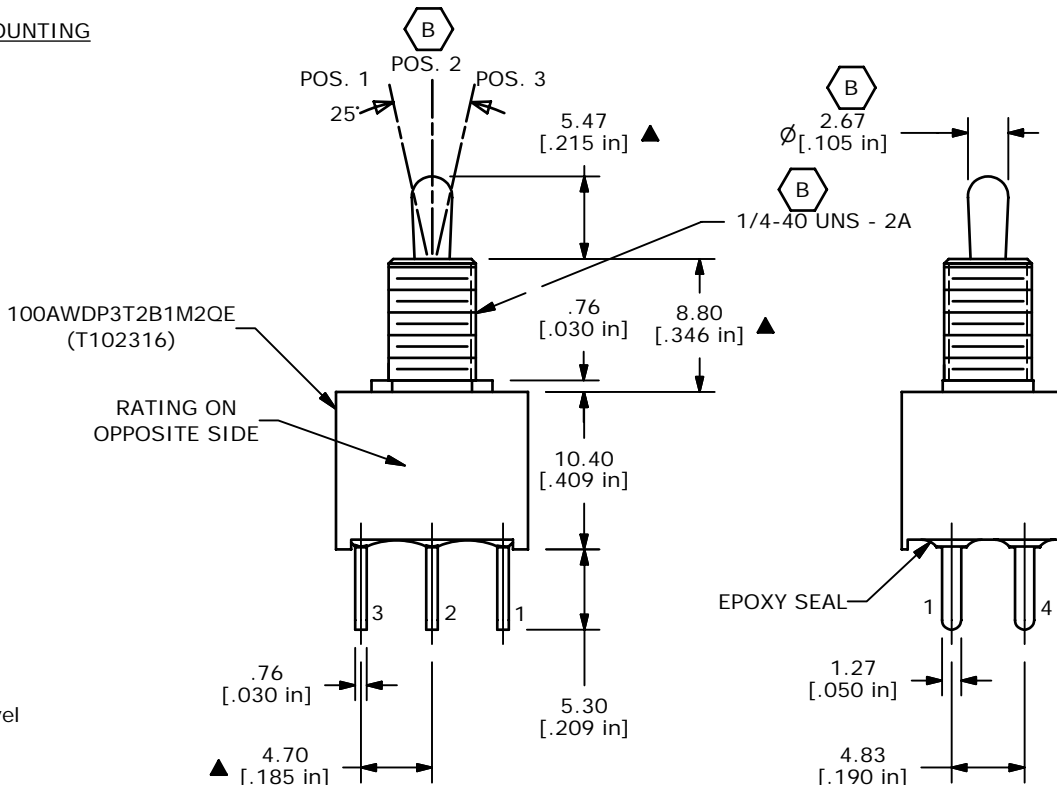


ISOMETRIC

| SWITCH FUNCTION |        |          |
|-----------------|--------|----------|
| POS. 1          | POS. 2 | POS. 3   |
|                 |        |          |
| ON              | OFF    | ON       |
| 2-3, 5-6        | OPEN   | 2-1, 5-4 |

NOTES:

1. ALL DIMENSIONS IN MM [INCH]
2. GENERAL TOLERANCE: x.x=±0.4  
x.xx=±0.25
3. TERMINAL NOS. FOR REF. ONLY
- ▲ 4. PLATING MATERIAL: SILVER
5. RATING: 2A @ 250VAC  
5A @ 120VAC or 28VDC
6. ELECTRICAL LIFE: 30,000 make-and-break cycles at full load
7. INSULATION RESISTANCE: 1,000mOHMS MIN
8. DIELECTRIC STRENGTH: 1,000V RMS @ sea level
9. OPERATING TEMPERATURE: -30°C to 85°C
10. ▲ DENOTES CRITICAL PARAMETER
11. 2002/95/EC (ROHS) COMPLIANT
12. HARDWARE TO BE SHIPPED BULK:  
T100011 - LOCK WASHER, QTY 1  
T100015 - LOCK RING, QTY 1  
T100000 - HEX NUT, QTY 2



|     |        |                  |         |    |
|-----|--------|------------------|---------|----|
| B   | 16343  | CLEANED UP DWG.  | 8/18/06 | BO |
| A   | 16047  | NEW PART RELEASE | 5/19/06 | CT |
| REV | PCR NO | DESCRIPTION      | DATE    | BY |

|                         |           |    |          |     |
|-------------------------|-----------|----|----------|-----|
| TITLE 100AWDP3T2B1M2QEH |           |    |          |     |
| SCALE                   | DATE      | DR | DWG      | REV |
| 2:1                     | 5/19/2006 | CT | ST102316 | B   |

THE INFORMATION CONTAINED IN THIS DOCUMENT IS PROPRIETARY TO E-SWITCH AND IS NOT TO BE COPIED OR TRANSFERRED