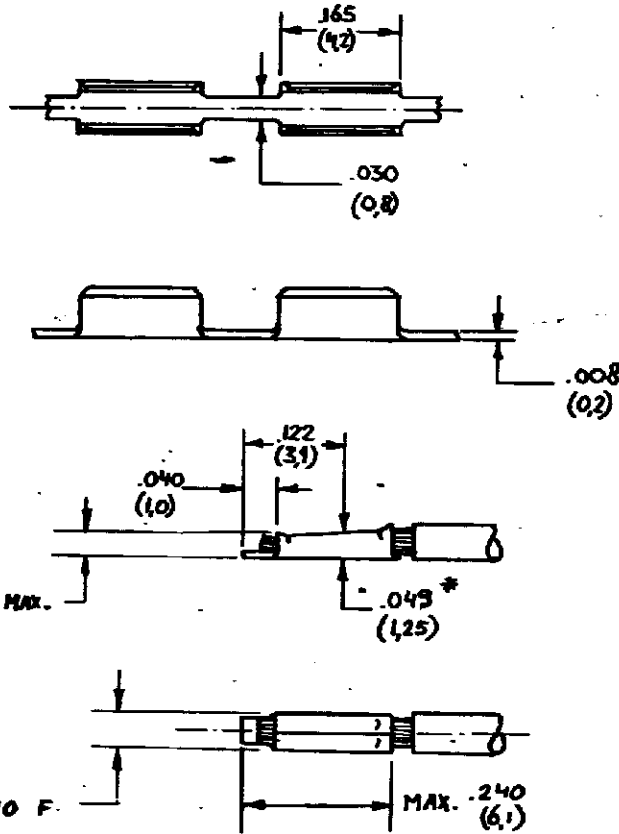


DRAWING MADE IN AMERICAN PROJECTION

NUMBER
C-160725



CRIMP WIDTH .040 F.

NOTES: 1 FOR PRINTBOARD HOLE $.049 \pm .004$ ($1.25 \pm .01$) DIA.
FOR AW622 WIRE (0.32 mm^2)

2 REELED WITH PAPER.

3 OBSOLETE PARTS: OBSOLETE CIS
STREAMLINING PER D.RENAUD/D.SINISI

CUSTOMER COPY FOR REFERENCE ONLY



AMP - HOLLAND N.V.
's-Hertogenbosch

160725-2A	3	BRASS	UNPLATED
160725-1A		BRASS	Sn OVER Ni
ORDER NO.	MATERIAL	PLATING	
DATE	DATE	DATE	DATE
16.5.72	19/6/72		
DATE	DATE	DATE	DATE
			25/09/09

TYPE RANGE	WIRE RANGE	WIRE USED	SCALE	SIZE	NO	REV
16-22 AWG (0.2-0.25 mm ²)			5:1	A	C-160725	K1
NAME SOLDER SPLICE						

INCH DIMENSIONS IN () IN. DO NOT SCALE PRINT

AMP 2504