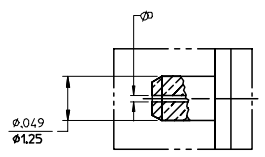
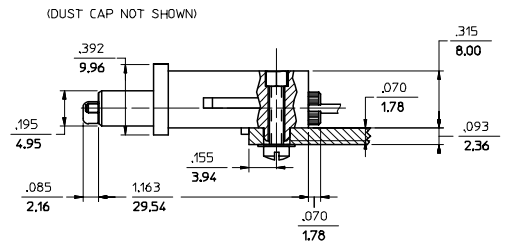
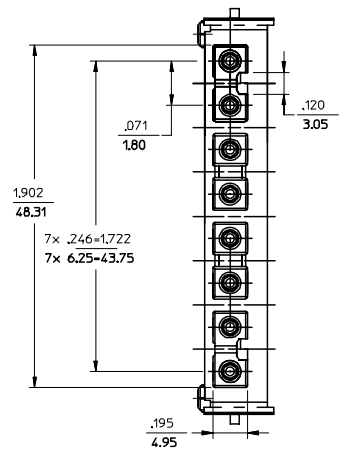
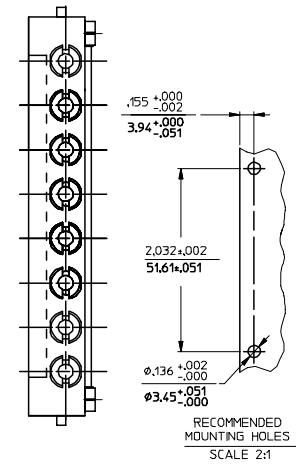
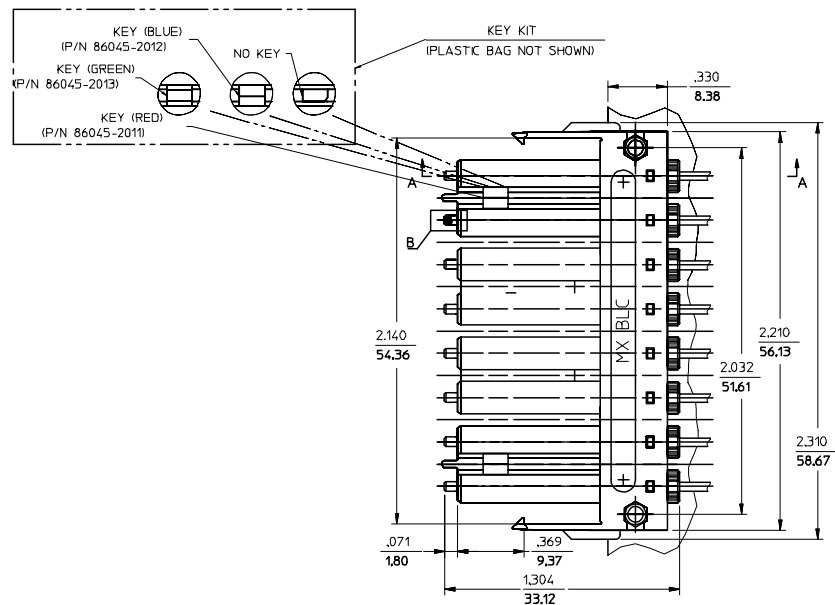


13 12 11 10 9 8 7 6 5 4 3 2 1

CONNECTOR P/N	ØD (4mm)	CABLE TYPE
106049-2200	125.50	SINGLE MODE
106049-4200	125.00	
106049-5000	126.00	
106049-6200	125.25	



NOTES:  
 1. ALL DIMENSIONS ARE FOR REFERENCE ONLY.

ENTER DESCRIPTION FC NO: MF2006-0263 DRAWN: PGIBLIN CHKD: 2005/11/16 APPR: LGUMIN 2005/11/16 2005/11/16	QUALITY SYMBOLS ▽=0 ▽=0	GENERAL TOLERANCES (UNLESS SPECIFIED)		DIMENSION STYLE IN/MM	SCALE 4:1	DESIGN UNITS INCH	THIRD ANGLE PROJECTION		
		4 PLACES ± --- ± --- 3 PLACES ± --- ± --- 2 PLACES ± --- ± --- 1 PLACE ± --- ± ---	mm INCH	DRAWN BY PGIBLIN	DATE 2005/10/20	TITLE BLC/APC CONNECTOR (8 POSITION)			
		ANGULAR ±1/2°		CHECKED BY	DATE	APPROVED BY			
		DRAFT WHERE APPLICABLE MUST REMAIN WITHIN DIMENSIONS		MATERIAL NO. SEE TABLE	DOCUMENT NO. SD-106049-XX00	SHEET NO. 1 OF 01			

12 11 10 9 8 7 6 5 4 3 2 1