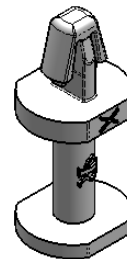
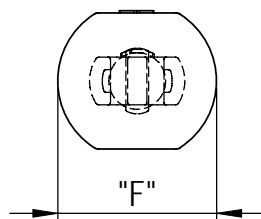
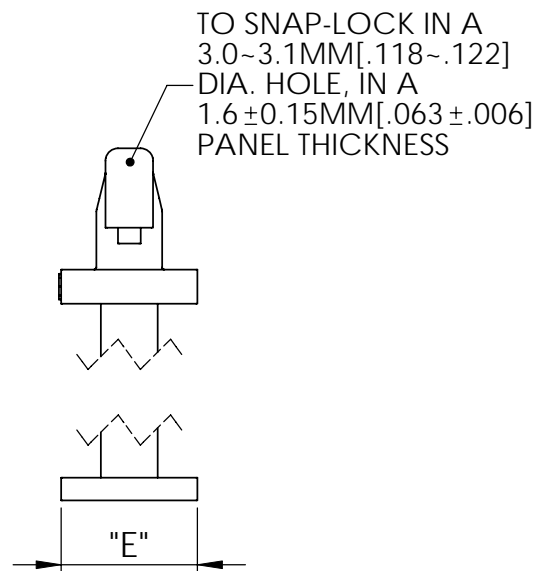
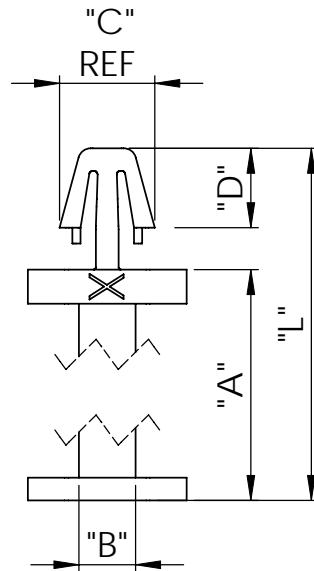


NYLON 6/6 (RMS-01) PART NO.	NYLON 6/6 (RMS-19) PART NO.	"A" ±0.3 [±.012]	"B" ±0.2 [±.008]	"C" REF	"D" ±0.2 [±.008]	"E" ±0.2 [±.008]	"F" ±0.3 [±.012]	"L" ±0.3 [±.012]
PSD-4M-01	PSD-4M-19	4.0 [.157]	∅2.5 [∅.098]	4.2 [.165]	3.5 [.138]	6.0 [.236]	∅7.0 [∅.276]	9.35 [.368]
PSD-6M-01	PSD-6M-19	6.0 [.236]						11.35 [.447]
PSD-7M-01	PSD-7M-19	7.0 [.276]						12.35 [.486]
PSD-8M-01	PSD-8M-19	8.0 [.315]						13.35 [.526]
PSD-10M-01	PSD-10M-19	10.0 [.394]						15.35 [.604]
PSD-12M-01	PSD-12M-19	12.0 [.472]						17.35 [.683]
PSD-14M-01	PSD-14M-19	14.0 [.551]						19.35 [.762]
PSD-18M-01	PSD-18M-19	18.0 [.709]						23.35 [.919]



NOTES:  
 1, MATERIAL: SEE TABLE  
 2, COLOR: NATURAL  
 3, ALTERNATE UNITS FOR REFERENCE ONLY

B	SEE CO220069 FOR CHANGES	J.T 12.01.10
A	RELEASED FOR PRODUCTION	J.T 02.24.10
R E V.	DESCRIPTION	ENGR. DATE

TITLE: **PUSH SPACER**



CREATED USING SOLIDWORKS	FILE #: PSD	DWN: J.T	APP: J.T	FINAL
TOLERANCES UNLESS NOTED	SHEET: 1 OF 1	SHEET SIZE: A	DT: 07.14.09	CHKD: -
DIM ±: SEE TABLE ANG.=±1°	RE: RICHCO --	RICHCO WWW.RICHCO-INC.COM (+86) 592-6884500		PART # <b>SEE TABLE</b>
				PRINT TYPE <b>CA</b>