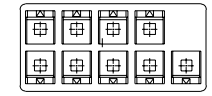
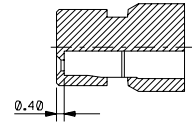


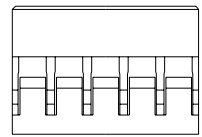
← K



VIEW K

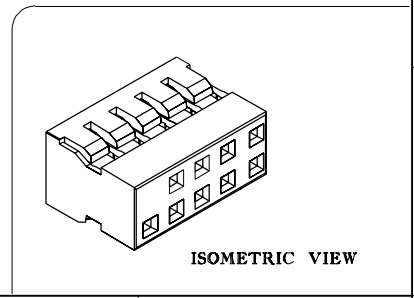


SECT J-J



**NOTES:**

1. PART TO BE USED WITH CRIMP TERMINAL PART NUMBER 50394-8\*\*\*.
2. APPLICABLE WIRE RANGE : AWG #24 - #30.
3. WIRE INSULATION RANGE : DIAMETER 1.40MM MAXIMUM.



ISOMETRIC VIEW

				MATERIAL : GLASS-FILLED POLYESTER UL RATED 94V-0 COLOR BLACK		molex MOLEX SINGAPORE PTE LTD SHEET   OF	
				FINISH : _____		GENERAL TOLERANCES ± 0.20 / 008 REV B	
B	REVISE VOID	S50044	S.O.	940727	DWG. NO. : SD   51110-1053		
A	RELEASE TO SALES	S40565	S.O.	940517			
LTR	REVISION RECORD	ECN	DR	CHK	DATE	DRAWN BY STEVEN 940517	CHK'D BY JAMES SCALE 4 : 1
<b>REVISE ONLY ON CAD SYSTEM</b>						TITLE : 2MM GRID, WIRE-TO-BOARD CONN, CRIMP RECEPTACLE HSC.	