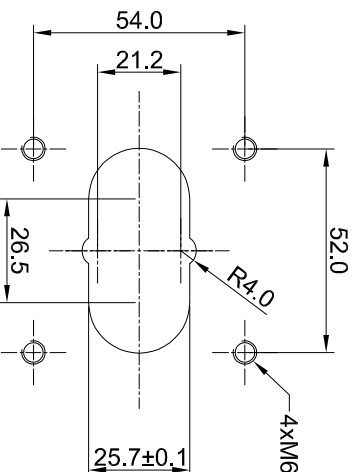
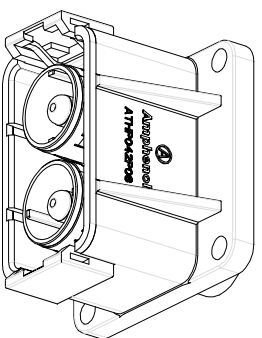
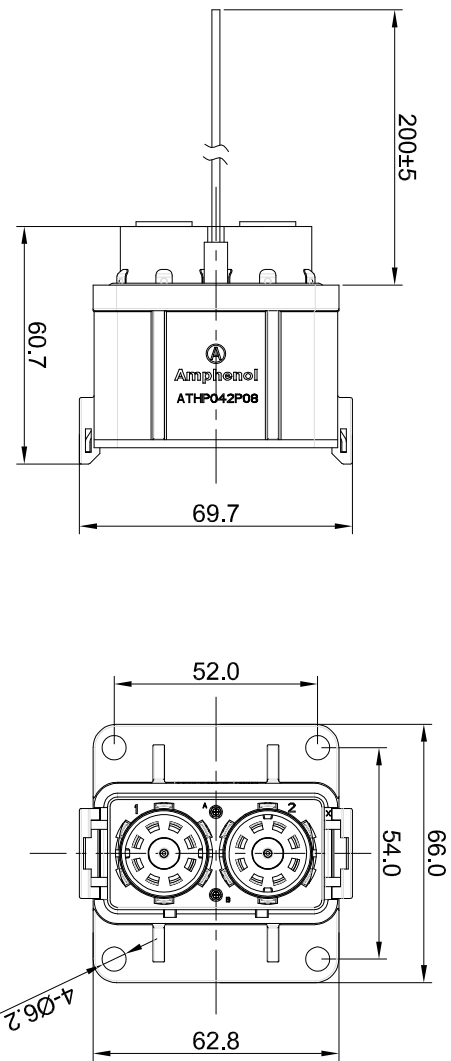


REVISIONS				
REV	ECO	DESCRIPTION	DATE	BY APPR
A1	-	RELEASE NEW DRAWING	Aug.31.2016	Tod Tommy
A2	-	UPDATE THE STRUCTURES	Oct.24.2016	Regan Tommy
A3	-	UPDATE DRAWING	Dec.15.2016	Regan Tommy

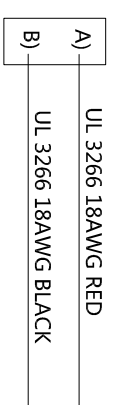


**RECOMMEND PANEL CUT**

**NOTES: UNLESS OTHERWISE SPECIFIED**

- MATERIAL:**
  - 1.1 HOUSING: THERMOPLASTIC UL 94V0
  - 1.2 SEAL: SILICONE RUBBER
  - 1.3 POWER CONTACT: COPPER ALLOY, SILVER PLATED
  - 1.4 SHIELDING: COPPER ALLOY, TIN PLATED
- SPECIFICATIONS:**
  - 2.1 CURRENT RATING: 50mm<sup>2</sup>@180 AMPS
  - 2.2 VOLTAGE RATING: 1000 V AC/DC
  - 2.3 OPERATING TEMPERATURE: -40°C TO +130°C
  - 2.4 DIELECTRIC WITHSTANDING VOLTAGE: LESS THAN 2 MILLIAMPS CURRENT LEAKAGE @ 3000 VOLTS AC.
  - 2.5 INSULATION RESISTANCE: 500 MEGOHMS MIN@25°C.
  - 2.6 DEGREE OF PROTECTION: IP67 (MATED CONDITION)
  - 2.7 MATING CYCLE DURABILITY: 100 CYCLES
  - 2.8 RoHS COMPLIANT
- SIGNAL CONTACT: RT SERIES 16# PIN CONTACT**  
**POWER CONTACT: SC000384-8**
- ALL DIMENSIONS ARE FOR REFERENCE USE ONLY.**

**Wiring Diagram**



QUANTITY	PART NUMBER	DESCRIPTION	ITEM
<b>MATERIALS LIST</b>			
UNLESS OTHERWISE SPECIFIED			
1) All dimensions are in millimeters.			
2) Tolerances are as follows:			
3 PL DEC 2015	FRAMES ±.104		
3 PL DEC 2015	FRAMES ±.104		
3 PL DEC 2015	FRAMES ±.104		
3) Note reference =			
MATERIAL SPECIFICATIONS:			
CUSTOMER:			
THIS DRAWING IS SUPPLIED FOR INFORMATION ONLY. DESIGN FEATURES, SPECIFICATIONS AND PERFORMANCE DATA ARE THE PROPERTY OF AMPHENOL CORPORATION. NO PARTS OR DIMENSIONS ARE SUBJECT TO TYPICAL MANUFACTURING VARIATIONS.			
PROCESS SPECIFICATIONS:		SIZE	
NEXT ASSTY:		SCALE: NONE	
DRAWN: Regan		DATE: Dec.15.2016	
CHECKED:		APPROVAL:	
ENGINEER:		SHEETS: 1 OF 1	
APPROVAL:		SHEET 1 OF 1	
<b>Amphenol</b>			
Site Systems - www.amphenol-site.com 44724 Mowley Drive Clinton Township, MI 48036			
ATHP, RECEPTACLE, 2 PIN, 8MM FLANG MOUNTING WITH EMC SHIELDING			
TYPE: B C-		DRAWING: ATHP042P08EL16-50	
SCALE: NONE		REVISION: A3	