

4

3

2

1

THIS DRAWING IS UNPUBLISHED. RELEASED FOR PUBLICATION  
 © COPYRIGHT - By - ALL RIGHTS RESERVED.

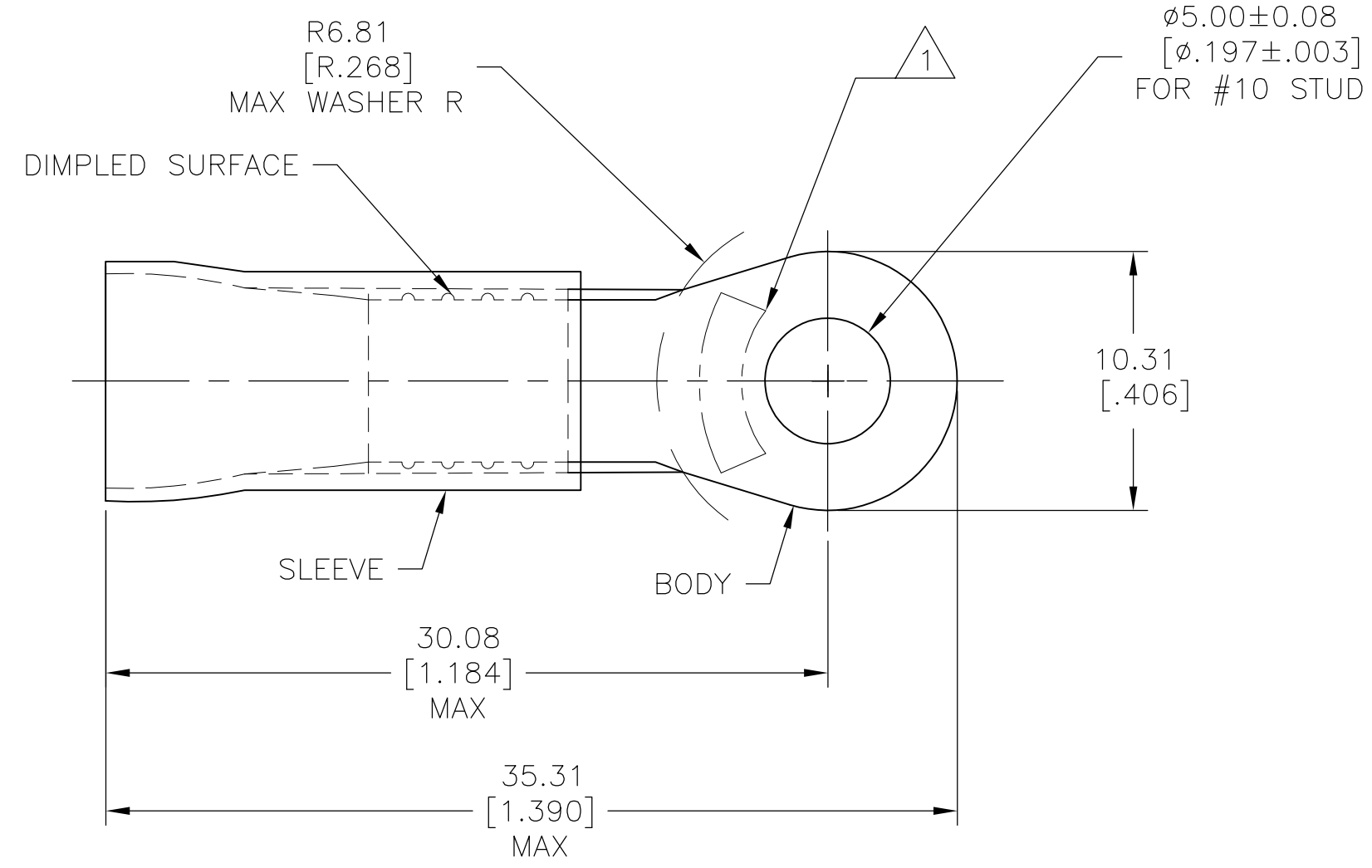
| LOC | DIST | REVISIONS   |                           |         |       |
|-----|------|-------------|---------------------------|---------|-------|
| P   | LTR  | DESCRIPTION | DATE                      | DWN     | APVD  |
| G   | 14   | C1          | REVISED PER ECO-12-007419 | 20APR12 | KH DR |

**AMP**  
WIRE RANGE

---

8 AWG  
STRANDED

- 1 STAMP AMP 8\* LOCATE APPROX AS SHOWN
- 2 TONGUE MATERIAL THK 1.22±0.08[.048±.003]
- 3 TAPE ITEMS ARE ON 30.48 [1.200] CENTERS
- 4 FOR 9.14[.360]MAX INSULATION DIAMETER.



|     |              |          |
|-----|--------------|----------|
| 500 | ON TAPE      | 696050-2 |
| 100 | LOOSE PIECE  | 696050-1 |
| QTY | PACKAGE TYPE | PART NO. |

|  |  |   |  |  |                                 |                    |  |                    |
|--|--|---|--|--|---------------------------------|--------------------|--|--------------------|
| AMP INCORPORATED<br>CUSTOMER SERVICE SYSTEMS                                     |  | MAX RECOMMENDED OPERATING TEMPERATURE:<br>105° C [221°F]  | THIS DRAWING IS A CONTROLLED DOCUMENT.               |  | DWN<br>JR RUTH<br>31MAY00       | TE Connectivity    |  |                    |
| FOR ADDITIONAL PRODUCT INFORMATION OR COPIES OF DRAWINGS AND TECHNICAL DOCUMENTS | PRODUCT INFORMATION CENTER<br>1-800-522-6752 | VOLTAGE RATING:<br>600 V MAX  | DIMENSIONS:<br>mm [INCHES]                           | TOLERANCES UNLESS OTHERWISE SPECIFIED:   | CHK<br>M FEHER<br>31MAY00       |                    | NAME<br>T MICHELUTTI<br>PRODUCT SPEC<br>APPLICATION SPEC |                    |
| FOR APPLICATION TOOLING INFORMATION  | TOOLING ASSISTANCE CENTER<br>1-800-722-1111  | CIRCULAR MIL AREA:<br>6.64-10.54mm <sup>2</sup> [13,100-20,800] STRANDED  |  | 0 PLC ± -<br>1 PLC ± -<br>2 PLC ± 0.20[.008]<br>3 PLC ± -<br>4 PLC ± -<br>ANGLES ± - | APVD<br>T MICHELUTTI<br>31MAY00 |                    |  | SIZE<br>A3         |
| FOR ORDER ENTRY  | 1-800-526-5142                               | THIS DRAWING IS A CONTROLLED DOCUMENT FOR AMP INCORPORATED. IT IS SUBJECT TO CHANGE AND THE CONTROLLING ENGINEERING ORGANIZATION SHOULD BE CONTACTED FOR THE LATEST REVISION. | MATERIAL<br>COPPER PER ASTM B-152<br>SLEEVE-PVC, RED | FINISH<br>TIN PLATE<br>PER ASTM B545   | WEIGHT<br>-                     | CAGE CODE<br>00779 | DRAWING NO<br>C-696050                                   | RESTRICTED TO<br>- |
|  |  |   | CUSTOMER DRAWING                                     |  | SCALE<br>NTS                    | SHEET<br>1 OF 1    | REV<br>C1  |                    |