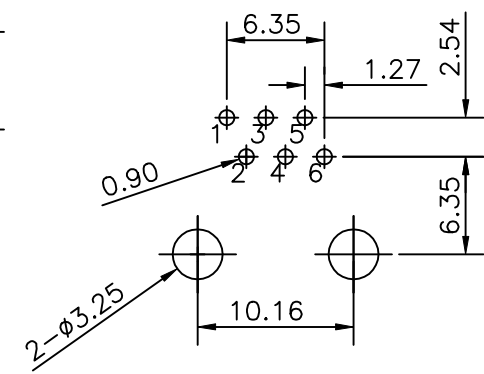
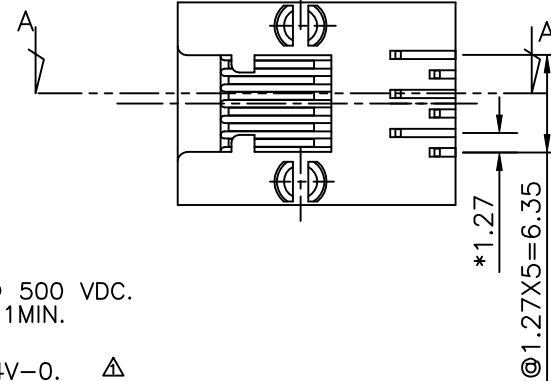
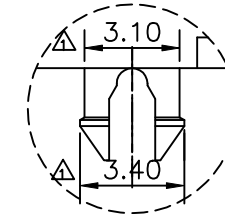
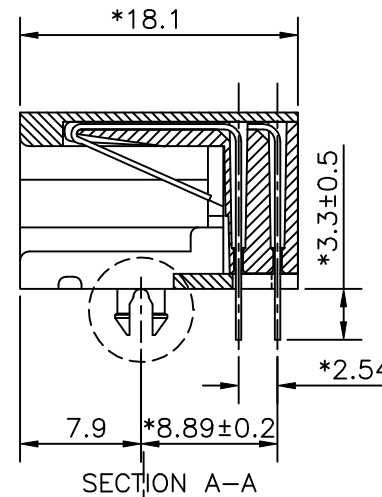
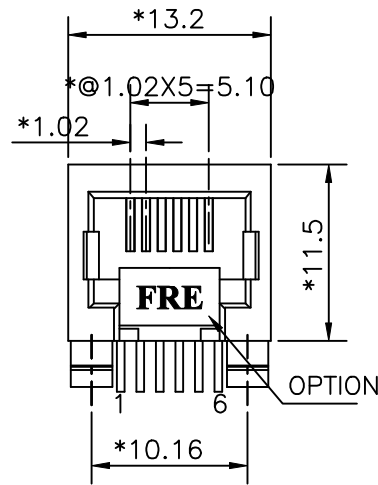


REVISION RECORD				
REV	ECO	DESCRIPTION	DRFT	CHKD
△		Drawing Modify	01/02/06	



PC BOARD LAYOUT COMPONENT SIDE SHOWN

NOTES:

ELECTRICAL:

- VOLTAGE RATING : 125 VAC RMS.
- CURRENT RATING : 1.5 AMP.
- CONTACT RESISTANCE : 35 MILLIOHMS MAX.
- INSULATION RESISTANCE: 1000 MEGOHMS MIN @ 500 VDC.
- DIELECTRIC STRENGTH : 1000 VAC RMS 60Hz, 1MIN.

MECHANICAL:

- HOUSING MATERIAL : HIGH TEM. UL94V-0. △
- CONTACT MATERIAL : PHOSPHOR BRONZE t=0.35mm.
- PLATING : GOLD PLATING OVER NICKEL.
- OPERATING LIFE : 750 CYCLES MIN.
- PCB RETENTION PRE-SOLDER : 1 LB MIN.
- PCB RETENTION POST-SOLDER: 10 LBS MIN.

ENVIRONMENTAL:

- STORAGE : -40°C TO +85°C.
- OPERATION: -40°C TO +85°C.

MATES WITH MODULAR PLUG CONFORMING TO FCC PART 68, SUBPART F.

PART NUMBER: E536X-FOOXXX-L

NO OF CONTACT:	1- 3u"	2- 6u"
2- 2C	3- 15u"	4- 30u"
4- 4C	5- 50u"	
6- 6C	50 - W/ FRE LOGO	
	5R - W/O LOGO	

← MM (INCH) → TOLERANCES EXCEPT AS NOTED .0 ±0.20 ± .00 ±0.15 ± .000 ±0.075 ±		DFTO Among DATE 11/13/04 CHKD QIANPU DATE 2005/1/19 MFO DATE APPV LUSHENG DATE 2005/1/19	FULL RISE ELECTRONIC CO., LTD	
ANGLES ± THIRD ANGLE PROJECTION		QT'Y : FINISH : SCALE : 3:1	TITLE DEEP TYPE 11.5 SIDE ENTRY 6P	
		DRAWING NO. GE533099 /PART NO. SEE NOTE	SIZE A3	REV 1
DO NOT SCALE DRAWING			SHEET X	OF Y