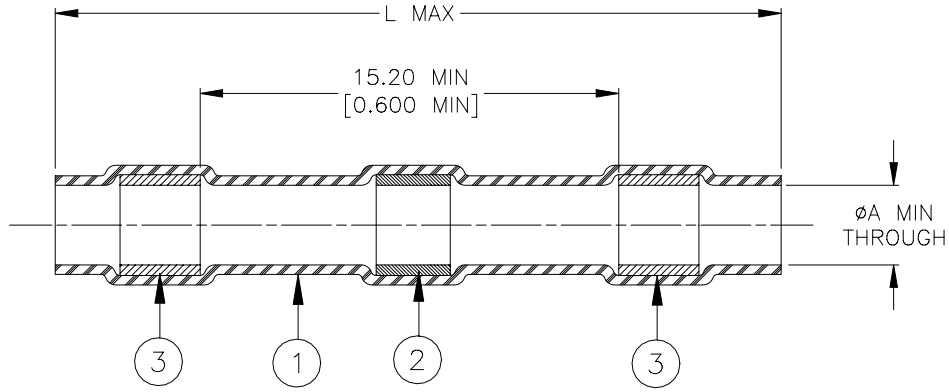


SPECIFICATION CONTROL DRAWING



Product Revisions		Size Code Color	Product Dimensions		Conductor Dimensions		Selection Guide			
Product Names	Item 3		L max	øA min	øB		Total mm ²		Total CMA	
					min	max	min	max	min	max
B-152-9001	N/C	Clear	26.0 (1.025)	1.7 (.065)	0.4 (0.015)	1.7 (0.065)	0.3	0.8	450	1500
B-152-9002	N/C	Red	42.0 (1.655)	2.7 (0.105)	1.3 (0.050)	2.7 (0.105)	0.8	2.0	1250	3500
B-152-9003	N/C	Blue	42.0 (1.655)	4.5 (0.180)	1.8 (0.070)	4.5 (0.180)	2.0	4.0	2500	7200
B-152-9004	N/C	Yellow	42.0 (1.655)	6.0 (0.235)	2.8 (0.110)	6.0 (0.235)	4.0	6.0	6100	19000
B-152-9005	N/C	Gray	42.0 (1.655)	7.0 (0.275)	3.2 (0.125)	7.0 (0.275)	6.0	10.0	12000	25000

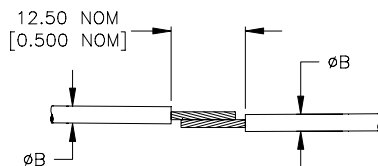
MATERIALS

- INSULATION SLEEVE: Heat-shrinkable, radiation cross-linked modified polyolefin. Transparent clear. Marked: "B-152".
- SOLDER PREFORM WITH FLUX:
SOLDER: TYPE Bi14 (Sn43Pb43Bi14A) per ANSI/J-STD-006.
FLUX: TYPE ROM1 per ANSI/J-STD-004.
- MELTABLE RINGS: Thermally stabilized thermoplastic. Color: see table.

APPLICATION

- These controlled soldering devices are designed to splice tin plated or bare copper stranded wires rated for at least +85°C.
- Temperature range: -55°C to +125°C.
- For installation procedure and application equipment consult RCPS-B152.

For best results, prepare the wire as shown:



tyco Electronics		Raychem 305 Constitution Drive, Menlo Park, CA. 94025, USA		TITLE: SOLDERSLEEVE ONE STEP WIRE TERMINATOR LOW TEMPERATURE			
Unless otherwise specified dimensions are in millimeters. [Inches dimensions are shown in brackets]				DOCUMENT NO.: B-152-900X			
TOLERANCES: 0.00 N/A 0.0 N/A 0 N/A	ANGLES: N/A ROUGHNESS IN MICRON	Tyco Electronics reserves the right to amend this drawing at any time. Users should evaluate the suitability of the product for their application.		PROD. REV.: SEE TABLE	DOC. ISSUE: 0	DATE: 24-Apr-03	
PREPARED BY: mforonda	DCR NUMBER: D030214	REPLACES: ----	SCALE: None	SIZE: A	SHEET: 1 of 1		

If this document is printed it becomes uncontrolled. Check for the latest revision.