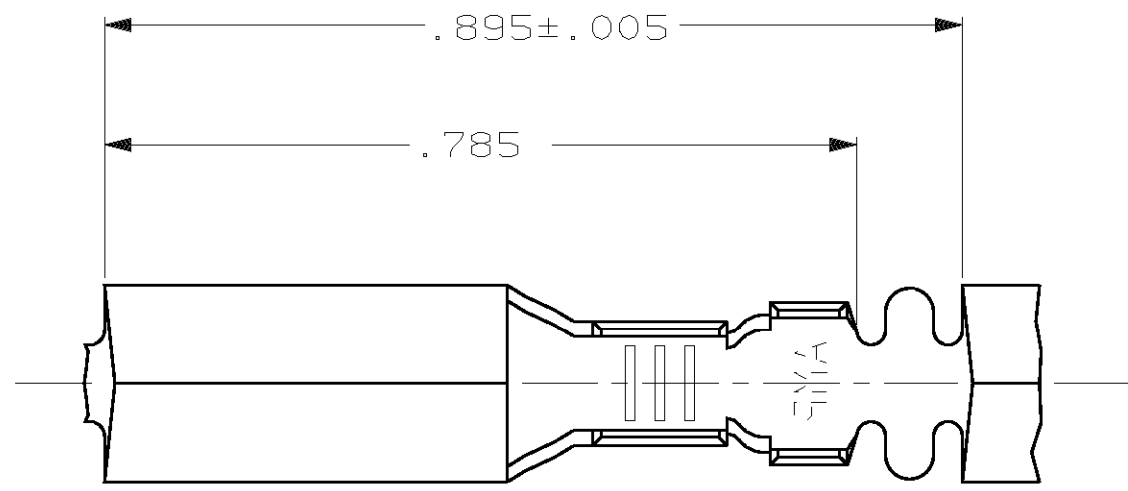
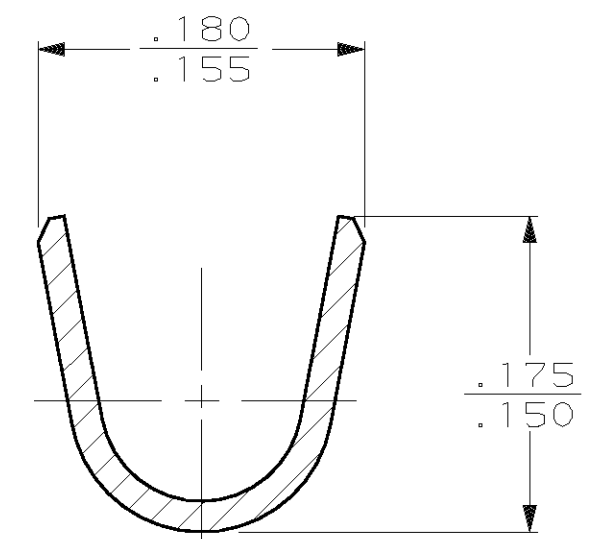
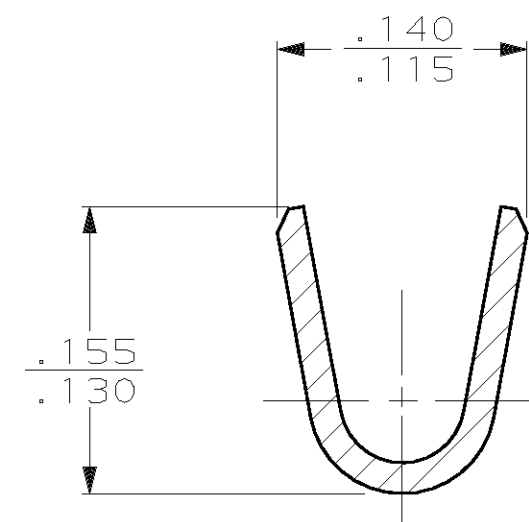
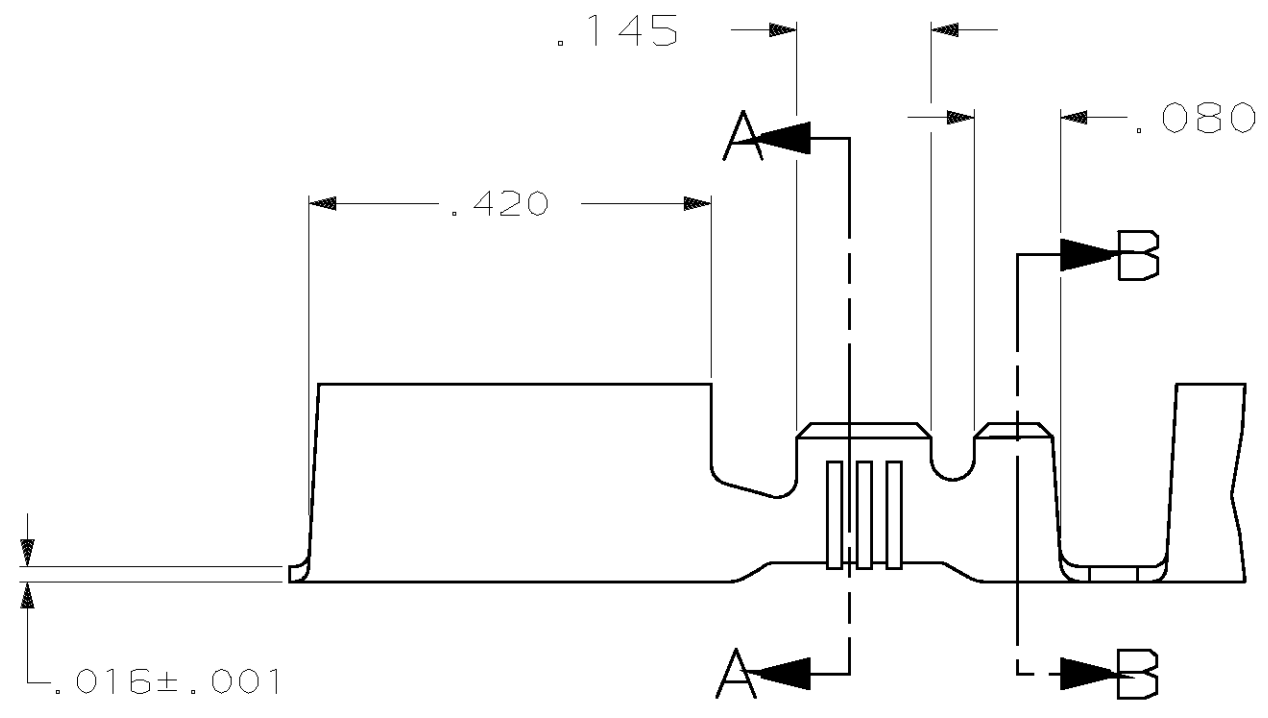
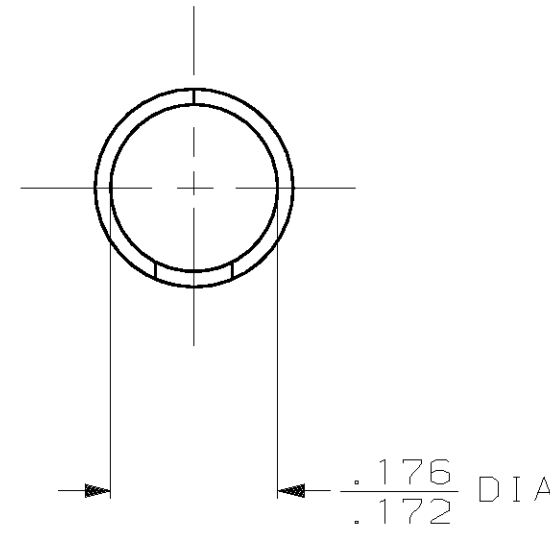


THIS DRAWING IS UNPUBLISHED. RELEASED FOR PUBLICATION  
 © COPYRIGHT 19 BY AMP INCORPORATED. ALL INTERNATIONAL RIGHTS RESERVED.

| LOC | DIST | P | F | ZONE | LTR | REVISIONS              | DATE      | APPD  |
|-----|------|---|---|------|-----|------------------------|-----------|-------|
| AF  | 50   |   |   |      |     | 5 REV PER 0G3A-0403-01 | 28 Jun 01 | JR/DD |



- 1 CONTINUOUS STRIP ON REELS
- 2 PRE-PLATE .000100 MIN TIN OVER .000050 MIN NICKEL, POST PLATE .000080 MIN TIN PER MIL-T-10727
- 3 .000080 MIN TIN PL PER MIL-T-10727.
- 4 WITH INTERLEAVING PAPER.
- 5 PRELIMINARY - NOT FOR PRODUCTION.



SECTION A-A  
SCALE 10:1

SECTION B-B  
SCALE 10:1

| MATERIAL    | FINISH | INSULATION DIA | WIRE RANGE | PART NO   |
|-------------|--------|----------------|------------|-----------|
| 4M BRASS    | 3      | .090-.125      | 18-14      | 4 60799-6 |
| 4M BRASS    | 3      |                |            | 5 60799-5 |
| PHOS BRONZE | 2      |                |            | 60799-4   |
| 4M BRASS    |        |                |            | 60799-2   |

| TYPE               | WIDTH | STRIP LENGTH ±.015 | TYPE              | WIDTH | ±.002 HEIGHT | WIRE |
|--------------------|-------|--------------------|-------------------|-------|--------------|------|
| F OR O             | .140  | .210               | F                 | .100  | .077         | 14   |
|                    |       |                    |                   |       | .067         | 16   |
|                    |       |                    |                   |       | .061         | 18   |
| INSUL BARREL CRIMP |       |                    | WIRE BARREL CRIMP |       |              |      |

DO NOT SCALE PRINT. UNLESS SPECIFIED DIMENSIONS IN INCHES TOLERANCES ON:

|                          |  |
|--------------------------|--|
| DR 12/13/88<br>P FORTNEY | AMP INCORPORATED<br>Harrisburg, Pa. 17105          |
| CHK 6/14/89<br>MS FEHER  |  |
| APPD 6/14/89<br>G YETTER | NAME<br><b>RECEPTACLE,<br/>SHUR PLUG, .180 DIA</b> |
| APPD 6/14/89<br>R KUZO   |  |
| FINISH<br>SEE TABLE      | PRODUCT SPEC<br>-                                  |
| APPLICATION SPEC<br>-    | SIZE<br><b>C</b>                                   |
| WEIGHT<br>-              | FSCM NO<br><b>00779</b>                            |
|                          | DRAWING NO<br><b>60799</b>                         |
|                          | SCALE<br>5:1                                       |
|                          | SHEET<br>1 OF 1                                    |