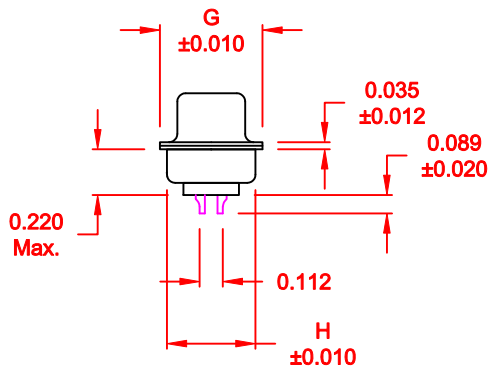
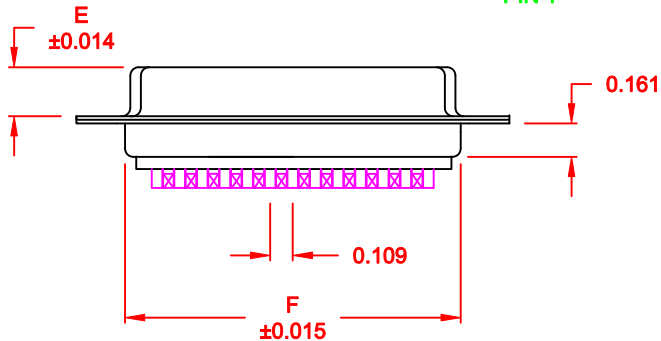
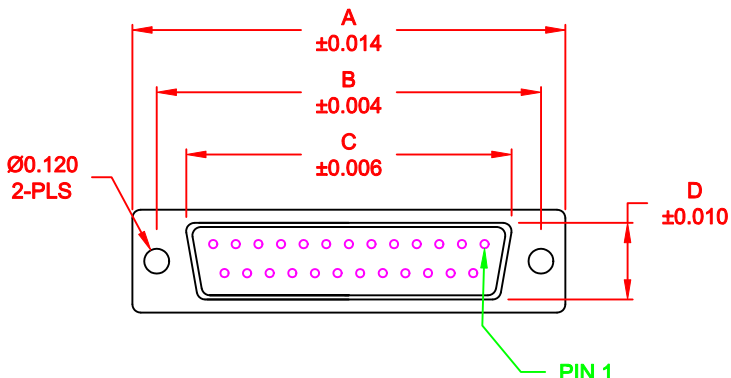


DESCRIPTION: FEMALE - SOLDER CUP / MACHINED - ECONOMY

WILL ACCEPT 26-20 AWG WIRE



| No. OF PINS | DIMENSIONS |       |       |       |       |       |       |       |
|-------------|------------|-------|-------|-------|-------|-------|-------|-------|
|             | A          | B     | C     | D     | E     | F     | G     | H     |
| 9           | 1.213      | 0.984 | 0.642 | 0.311 | 0.236 | 0.756 | 0.496 | 0.427 |
|             | 30.80      | 24.99 | 16.30 | 7.90  | 5.99  | 19.20 | 12.60 | 10.85 |
| 15          | 1.541      | 1.312 | 0.970 | 0.311 | 0.236 | 1.091 | 0.496 | 0.427 |
|             | 39.15      | 33.32 | 24.65 | 7.90  | 5.99  | 27.70 | 12.60 | 10.85 |
| 25          | 2.087      | 1.852 | 1.512 | 0.311 | 0.236 | 1.618 | 0.496 | 0.427 |
|             | 53.00      | 47.04 | 38.40 | 7.90  | 5.99  | 41.10 | 12.60 | 10.85 |
| 37          | 2.728      | 2.500 | 2.157 | 0.311 | 0.236 | 2.256 | 0.496 | 0.427 |
|             | 69.30      | 63.50 | 54.80 | 7.90  | 5.99  | 57.30 | 12.60 | 10.85 |
| 50          | 2.638      | 2.406 | 2.055 | 0.429 | 0.240 | 2.169 | 0.602 | 0.527 |
|             | 67.00      | 61.11 | 52.20 | 10.90 | 6.10  | 55.10 | 15.30 | 13.39 |

172-EYY-201RYY1

- SERIES \_\_\_\_\_
- POSITIONS \_\_\_\_\_
- E09 \_\_\_\_\_
- E15 \_\_\_\_\_
- E25 \_\_\_\_\_
- E37 \_\_\_\_\_
- E50 \_\_\_\_\_
- GENDER \_\_\_\_\_
- 2 = FEMALE
- TERMINATION \_\_\_\_\_
- 0 = SOLDER CUP
- SHELL PLATING \_\_\_\_\_
- 1 = YELLOW CHROMATE (NON-ROHS)
- HARDWARE OPTIONS \_\_\_\_\_
- 00 = NO HARDWARE
- 01 = .098" CLINCH NUT (BOARD SIDE)
- 02 = .236" CLINCH NUT (BOARD SIDE)
- 03 = .236" CLINCH NUT (MOUNTING SIDE)
- 05 = .237" 4-40 BOARD LOCK
- 91 = .237" 4-40 SPACER/ BOARD LOCK
- PLATING OPTIONS \_\_\_\_\_
- 1 = GOLD FLASH
- 2 = 30MICRO-INCH GOLD

**MATERIAL:**

SHELL: STEEL, YELLOW CHROMATE  
 INSULATOR: UL 94V-O RATED PBT-WHITE  
 PROCESS TEMP.: 260° FOR CABLE APPLICATIONS, 230° FOR BOARD  
 CONTACT: BRASS

**ELECTRICAL:**

CURRENT RATING: 5 AMPS  
 CONTACT RESISTANCE: 15 mOhms Max.  
 INSULATION RESISTANCE: 1,000 MOhms min.  
 VOLTAGE: 500VAC FOR 1 MINUTE  
 TEMPERATURE: -50° C TO 100° C

DO NOT SCALE FROM DRAWING

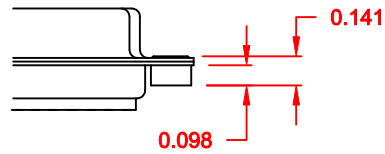
|                |   |                            |                           |                       |
|----------------|---|----------------------------|---------------------------|-----------------------|
|                | THESE DRAWINGS AND SPECIFICATIONS ARE THE PROPERTY OF NorComp AND SHALL NOT BE REPRODUCED, COPIED OR USED AS THE BASIS FOR THE MANUFACTURE OF SALE OF APPARATUS WITHOUT WRITTEN PERMISSION. |                            | DRAWN: <b>PAM JENKINS</b> | DATE: <b>11-28-05</b> |
|                |   |                            | CHECKED:                  | DATE:                 |
| <b>NorComp</b> | SCALE: <b>1 : 1</b>   | SHEET <b>1</b> OF <b>2</b> | REV <b>1</b>              |                       |
|                | DWG NO. <b>172-EYY-201RYY1</b>  |                            |                           |                       |

DESCRIPTION: CLINCH NUT HARDWARE

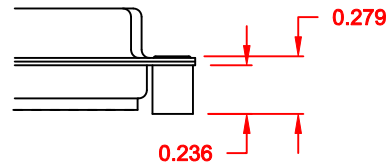
**TOLERANCE:**  
ALL DIMENSIONS ARE  $\pm 0.010$

**ALL CLINCH-NUTS ARE 4-40 INTERNAL THREADS**

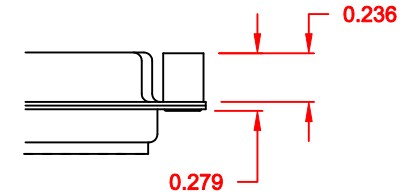
01X ..... 0.098" (BOARD SIDE) - CN1



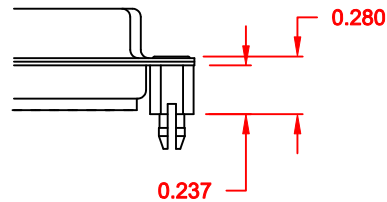
02X ..... 0.236" (BOARD SIDE) - CN2



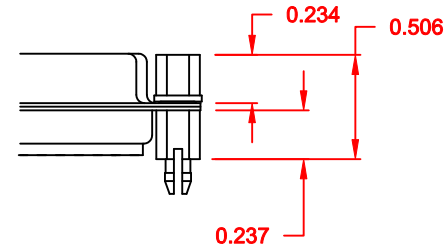
03X..... 0.236" (MATING SIDE) - CN8



05X ..... 0.237" (BOARD SIDE) - CN10




91X ..... 0.237" BOARD SIDE  
0.197" MATING SIDE  
CN10/SFSO4404



NOTE: 4-40 FEMALE SCREW LOCK IS REMOVABLE

**DO NOT SCALE FROM DRAWING**

|  |   |                                |                          |                 |
|--|---|--------------------------------|--------------------------|-----------------|
|  | THESE DRAWINGS AND SPECIFICATIONS ARE THE PROPERTY OF NorComp AND SHALL NOT BE REPRODUCED, COPIED OR USED AS THE BASIS FOR THE MANUFACTURE OF SALE OF APPARATUS WITHOUT WRITTEN PERMISSION. | DRAWN:<br><b>WAYNE ROBBINS</b> | DATE:<br><b>11-28-05</b> |                 |
|  | <b>NorComp</b>  | CHECKED:                       | DATE:                    |                 |
| SCALE:   |   | SHEET<br><b>2</b>              | OF<br><b>2</b>           | REV<br><b>1</b> |
| DWG NO.  |   | <b>172-EYY-201RYY1</b>         |                          |                 |