

OGA DIAGONAL: 20.46 [519.68]
 VA DIAGONAL: 19.74 [501.35]
 PA DIAGONAL: 18.61 [472.61]

TOP LEVEL NUMBER	US NUMBER	TYPE	DIM "A" (TOTAL GLASS TO CONNECTOR)	A/G FINISH	PROD SPEC
17-8551-204	98-0003-2622-7	FFC	6.00" [152.40]	AG500	23655
17-8551-220	98-0003-3163-1	USB R	6.00" [152.40]	AG500	23655
17-8551-223	98-0003-2624-3	SER	6.00" [152.40]	AG500	23655
17-8551-221	98-0003-3164-9	SER	4.27" [108.46]	AG500	23655
17-8551-205	98-0003-3260-5	FFC	8.00" [203.20]	AG500	23655
17-8551-226	98-0003-3346-2	USB R	8.00" [203.20]	AG500	23655
17-8551-227	98-0003-3261-3	SER	8.00" [203.20]	AG500	23655

ESD CLAMSHELL CASE IS USED WITH ALL NOV, USB AND SER TERMINATIONS.



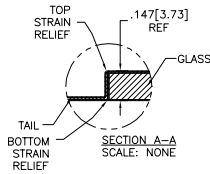
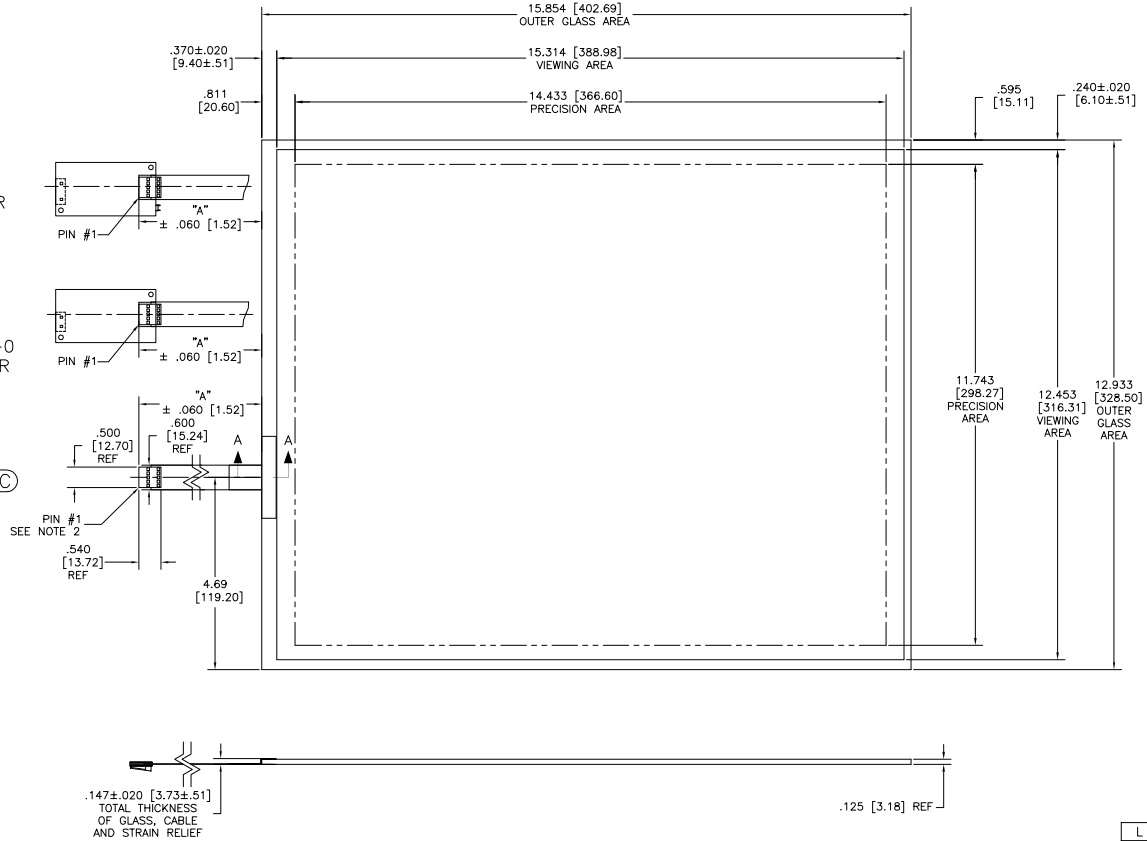
(SER)

EXII-7720SC
 98-0003-2217-6
 SERIAL CONTROLLER
 SOLDER SIDE

(USB R)

EXII-7760UC
 98-0003-2814-0
 USB CONTROLLER
 SOLDER SIDE

(FFC)



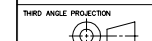
NOTES:

1. WEIGHT OF GLASS IN GRAMS: 1008±10%
2. NICOMATIC HOUSING P/N: OLO5
 NICOMATIC RECEPTACLES (PINS) MATTE TIN PLATED P/N: 14106-12
 HOUSING ORIENTED WITH LATCH DOWN

PINOUT	
1	LR
2	LL
3	SHLD
4	UL
5	UR

UNITS INCHES [MM]

TOLERANCES UNLESS OTHERWISE SPECIFIED
 .X ±
 .XX ±.03 [.76]
 .XXX ±.015 [.38]
 ANGLES ±1°



DO NOT SCALE DRAWING

SCALE 1 = 1

3M 3M TOUCH SYSTEMS
 METHUEN, MA
 USA
 © COPYRIGHT 2004
 THIS DOCUMENT IS COPYRIGHTED PROPERTY OF THE 3M COMPANY AND MAY NOT BE REPRODUCED WITHOUT 3M WRITTEN PERMISSION OR USED OR DISCLOSED FOR OTHER THAN 3M AUTHORIZED PURPOSES.

DRAWN K.CROWLEY 9/05

REV	CHANGE NOTICE	DATE	DRW
L	REVISED PER CO 036256	4/13	SB
K	REVISED PER CO 033533	9/11	SB
J	REVISED PER CO 033454	8/11	SB

TITLE
 MARKETING DRAWING
 SCT32NN 19.74"

CAD FORMAT AUTOCAD SHEET 1 OF 1

SIZE C DOCUMENT NO. 28364-MKT REV L