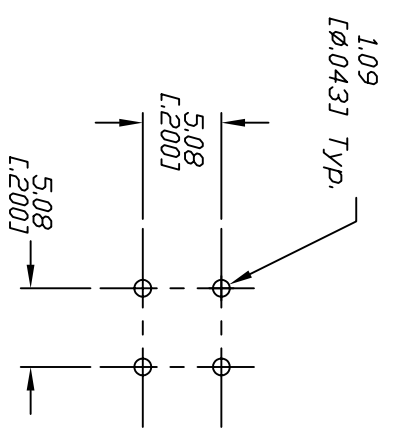
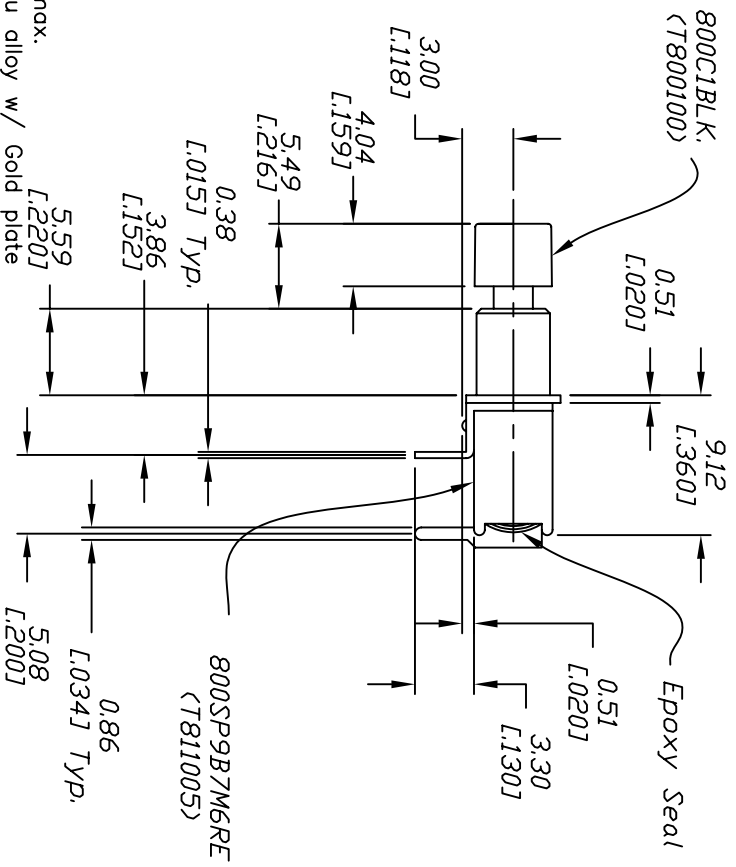
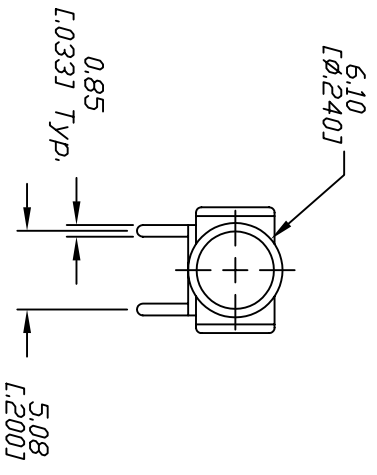


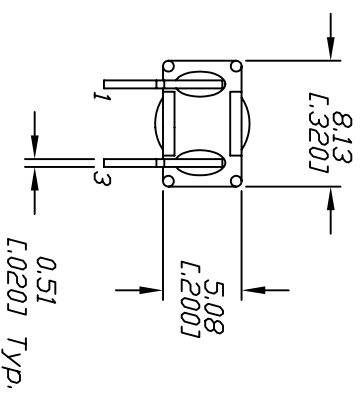
CIRCUIT: SPST
CONTACT CONFIGURATION

DIFF (CND)

() = Momentary



RECOMMEND P.C.B. LAYOUT



NOTES:

1. ALL DIMENSIONS IN MM [INCH]
2. GENERAL TOLERANCE: 0.0=±0.4
0.00=±0.25
3. TERM. NOS. FOR REF. ONLY
4. RATING: 0.4(VA) max. @20VAC or DC max.
5. FIXED TERMINAL & MOVING CONTACT: Cu alloy w/ Gold plate
over Nickel plate.
6. ELECTRICAL LIFE: 60,000 make-and-break cycles
at full load.
7. INSULATION RESISTANCE: 1,000M ohm min.
8. DIELECTRIC STRENGTH: 1,000V RMS @sed level.
9. OPERATING TEMP: -30°C to 85°C
10. 2002/95/EC (ROHS) COMPLIANT

REV.	ECN No.	DESCRIPTION	DATE	CHKD
A	16991	RELEASED FOR PRODUCTION	2/13/07	TN

TITLE		SCALE	DATE	DR	DWG	REV
800SP9B7M6RECIBLK		2:1	2/13/07	TN	XT0073A	A



THE INFORMATION CONTAINED IN THIS DOCUMENT IS PROPRIETARY TO E- SWITCH AND IS NOT TO BE COPIED OR TRANSFERRED