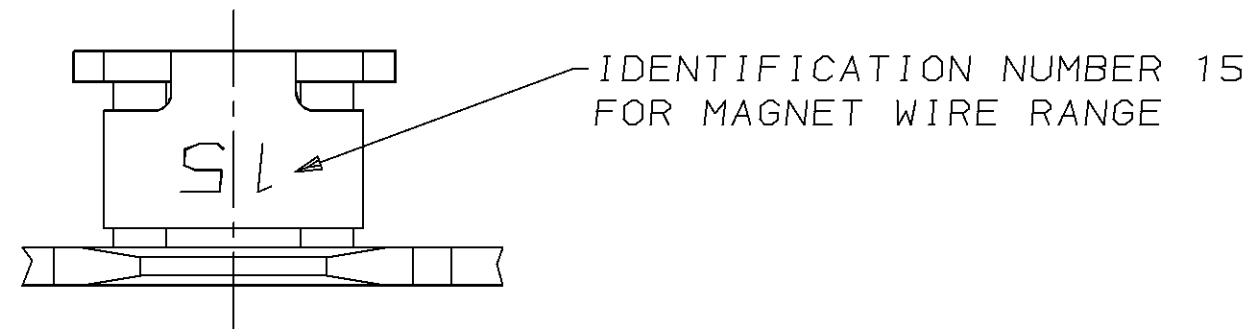
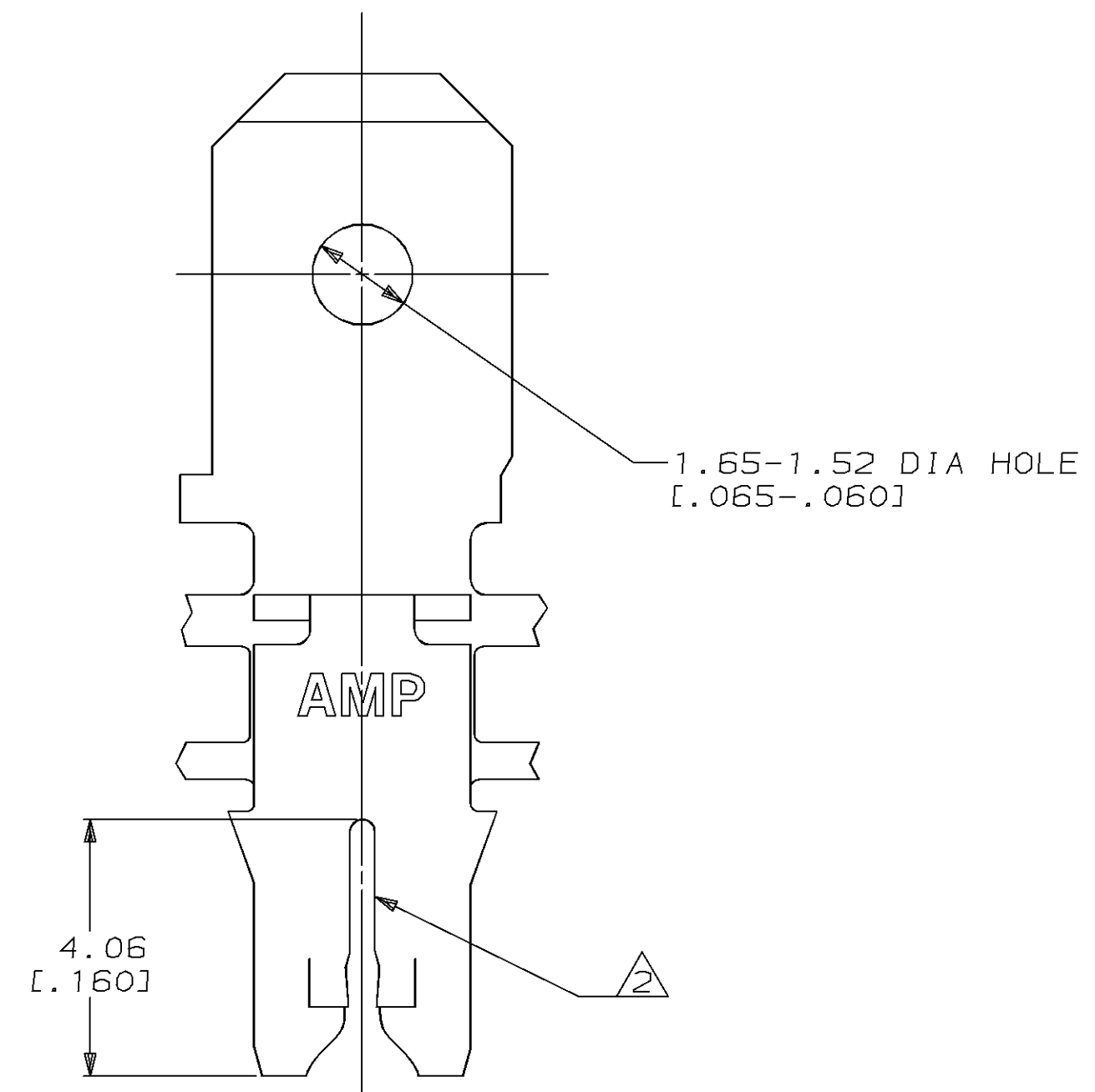
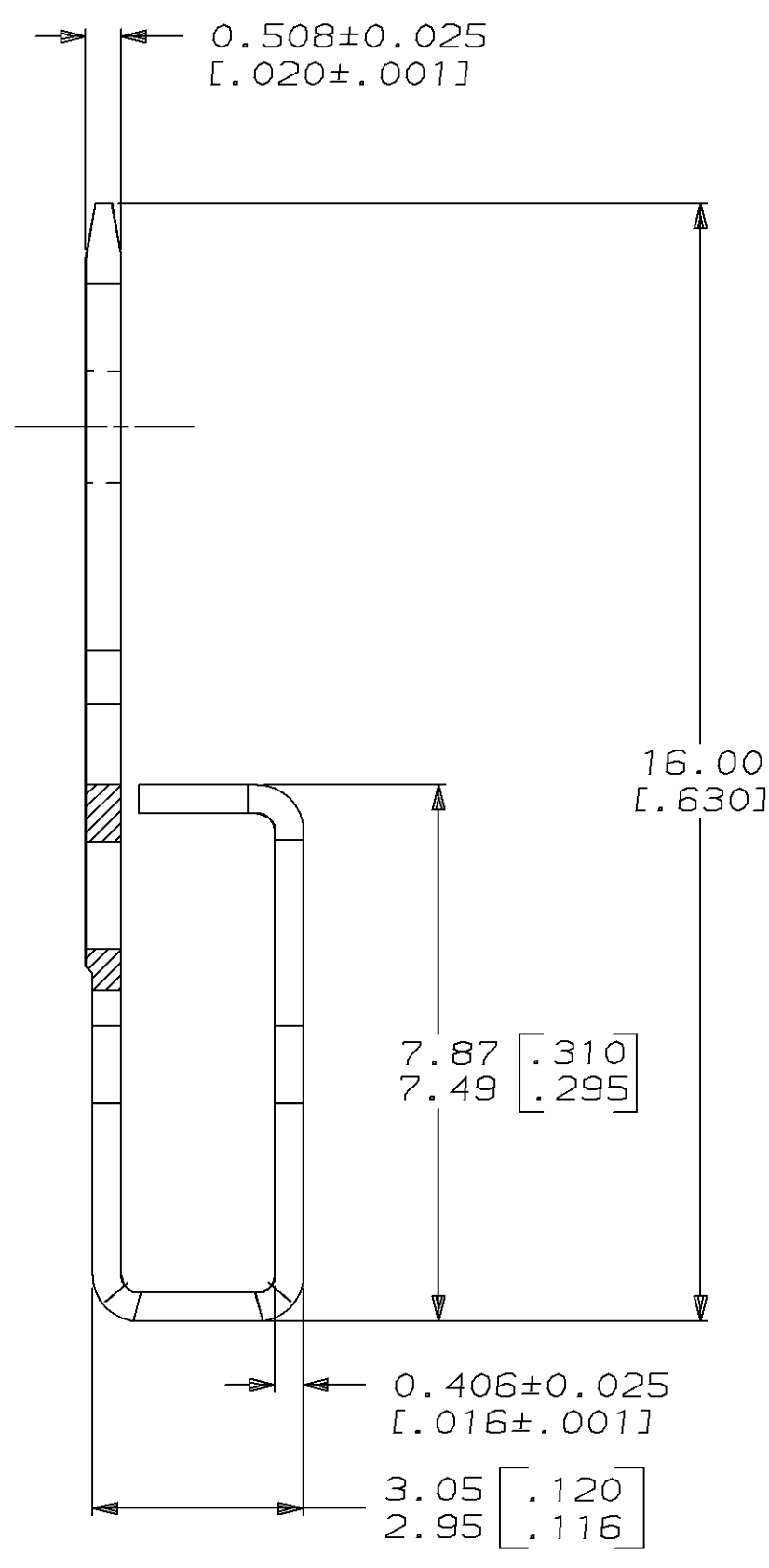
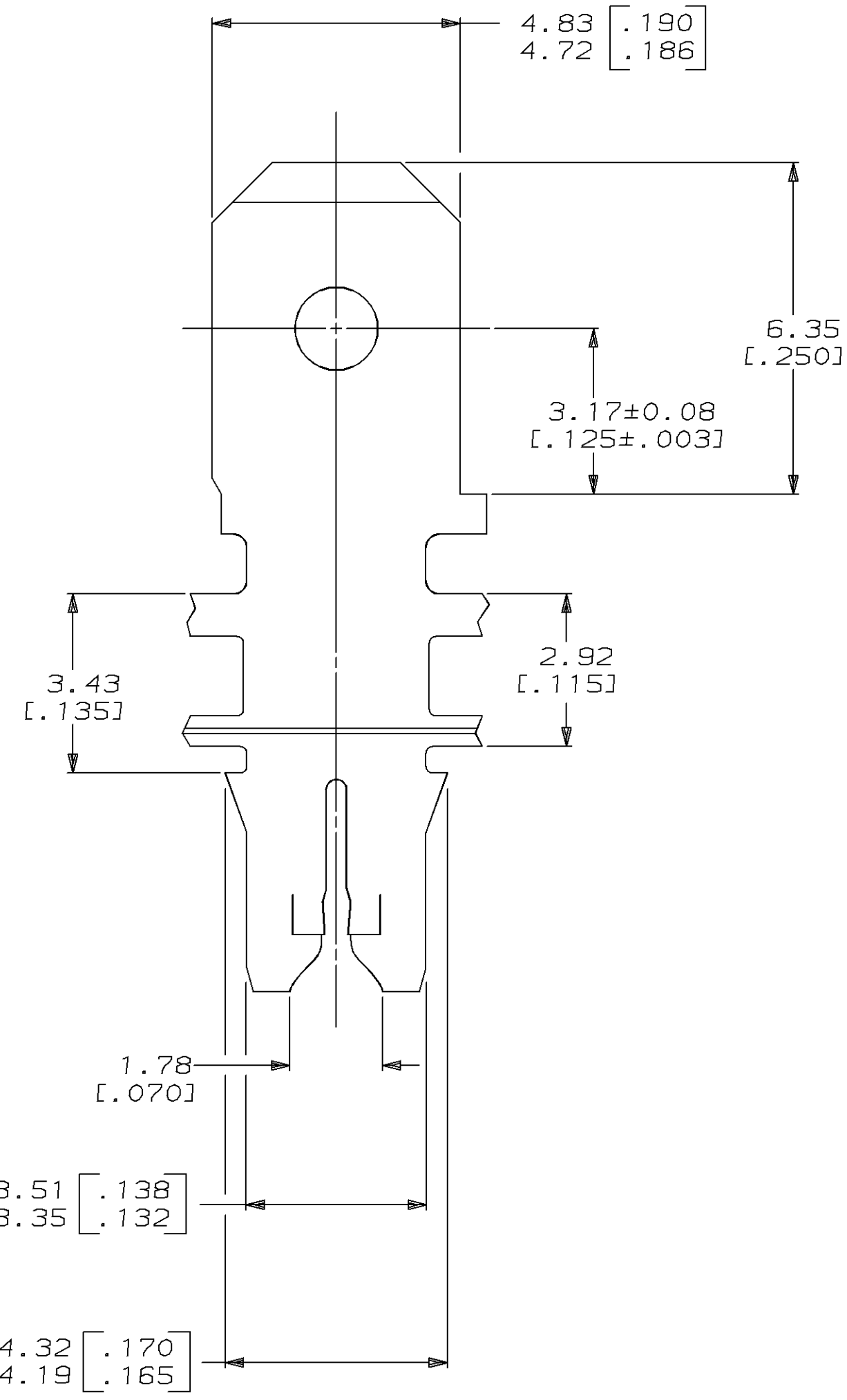


LOC		DIST		ZONE		LTR		REVISIONS		DATE	APPD
AF	50	P	F					D	REV LENGTH PER 0710-0034-95	03/FEB/95	MF/NN



- 1 CONTINUOUS STRIP ON REELS WITH TERMINALS LOCATED ON 5.59±0.08 [.220±.003] CENTERS.
- 2 SLOT TERMINATES A SINGLE MAGNET WIRE ONLY. COPPER RANGE: 0.64-0.81mm [#22-#20] AWG.
- 3 AFTER INSERTION INTO PLASTIC HOLDER TAB PORTION MUST BE BENT OVER 45° TO 90° OR POTTED-IN TO PREVENT PULL-OUT WHEN MATING RECEPTACLE IS DISCONNECTED.
- 4 VARNISH RESIST OVER 0.002032 [.000080] MIN TIN PER MIL-T-10727.
- 5 0.002032 [.000080] MIN TIN PER MIL-T-10727.



3.51 [.138]  
3.35 [.132]

4.32 [.170]  
4.19 [.165]

5	63663-2
4	63663-1
FINISH	PART NO

DO NOT SCALE PRINT. UNLESS SPECIFIED DIMENSIONS IN mm [INCHES] TOLERANCES ON : 2 PLC DEC ± 0.25 [.010] 3 PLC DEC ± - ANGLES ± -	DR 9/3/92 MICHAEL S. FEHER	AMP Incorporated Harrisburg, PA 17105-3608	
	CHK 9/4/92 PHILLIP M. FORTNEY		
MATERIAL H03 PRE-MILLED BRASS	APPD 9/15/92 NELSON E. NEFF	NAME TERMINAL, TAB, 4.75 [.187] FASTON™, MAG-MATE™	
FINISH SEE TABLE	APPD 9/15/92 TERRY L. SHUTTER	SIZE C	CAGE CODE 00779
	PRODUCT SPEC 108-2012	DRAWING NO C=63663	
	APPLICATION SPEC 114-2046	SCALE 10:1	SHEET 1 OF 1
	WEIGHT -		

THIS DRAWING IS A CONTROLLED DOCUMENT FOR AMP INCORPORATED. IT IS SUBJECT TO CHANGE AND THE CONTROLLING ENGINEERING ORGANIZATION SHOULD BE CONTACTED FOR THE LATEST REVISION.