

**THERMOFIT • SPECIFICATION CONTROL DRAWING • MOLDED PARTS**

**NOTES:**

1. All dimensions are in inches; all angles are in degrees.
2. Drawing depicts typical part.
3. Weight shown in table of dimensions is based on polyolefin part.
4. Dimensions appearing in table below are as follows:  
 a - As supplied.  
 b - After unrestricted recovery.

**ORDERING INFORMATION:**

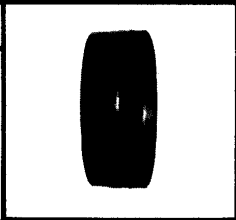
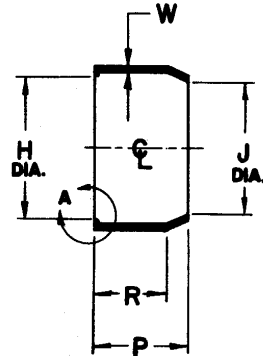
Matl. No.	Description	Rayclad Matl. Spec.	Specific Grav. Max.
3	Polyolefin	RT301	1.40

Add material number as suffix to part number.

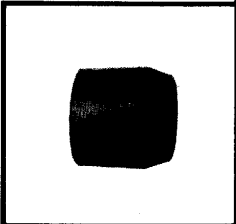
Example - Order 201A241-3 when polyolefin part is required.



**VIEW A**



AS SUPPLIED



AFTER UNRESTRICTED RECOVERY

**TABLE OF DIMENSIONS**

PART NO.	H		J		P		R		W		Weight lbs ±10%	This Boot Fits MIL-C-26482 Potting Ring			
	Min a	Max b	Min a	Max b	Max a	±10% b	Max a	±10% b	Max a	±20% b					
201A211-	1.09	.52	1.09	.39	.48	.49	.25	.25	.04	.04	.002	8			
201A221-	1.25	.65	1.25	.50	.60	.61	.38	.38	.04	.04	.002	10			
201A231-	1.38	.77	1.38	.68	.73	.74	.50	.51	.04	.04	.004	12			
201A241-	1.51	.90	1.51	.77	.85	.86	.62	.63	.04	.04	.004	14			
201A252-	1.63	1.02	1.63	.91	.97	.98	.75	.76	.04	.04	.006	16			
201A262-	1.76	1.15	1.76	1.03	.97	.98	.75	.76	.04	.04	.006	18			
201A272-	1.93	1.27	1.93	1.18	.97	.98	.75	.76	.04	.04	.008	20			
201A282-	2.10	1.40	2.10	1.31	.97	.98	.75	.76	.04	.04	.009	22			
201A292-	2.27	1.52	2.27	1.46	.97	.98	.75	.76	.06	.06	.013	24			



E.O. DATE DESCRIPTION  
 DDR A 4/64 View A added.

If this document is printed it becomes uncontrolled.  
 Check for the latest revision.

DRN JLW  
 CHK'D JMP  
 AUTH JSC  
 AUTH DDR

PART DESCRIPTION  
 CUP, POTTING

PART NO.  
**201A211 thru 292**

REV LTR  
**A**

REPLACES 6041-8 thru 24 Rev. A